



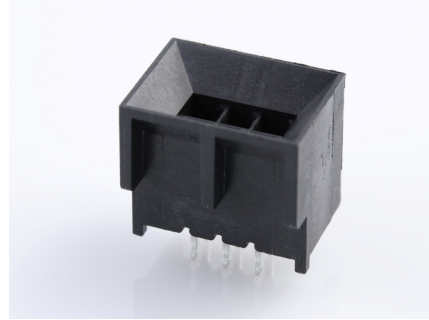
Part Number : [444320601](#)

Product Description : Micro-Fit BMI Header, Dual Row, Vertical, with PCB Polarizing Peg, 6 Circuits, Tin (Sn) Plating, Kinked Tails

Series Number : 44432

Status : Active

Product Category : PCB Headers and Receptacles



Documents & Resources

Drawings

[Drawing 444320601_sd.pdf](#)

[Packaging Design Drawing PK-44432-001-001.pdf](#)

3D Models and Design Files

[3D Model 444320601_stp.zip](#)

[Symbol Footprint Data SYM-44432-0601-001.zip](#)

[Symbol Footprint Data SYM-44432-060X-001.zip](#)

Specifications

[Product Specification PS-44300-001-001.pdf](#)

[Test Summary 443000002-TS-000.pdf](#)

Product Environment Compliance

Compliance

| | |
|--------------------|--|
| GADSL/IMDS | Not Relevant |
| China RoHS | |
| EU ELV | Not Relevant |
| Low-Halogen Status | Not Low-Halogen per IEC 61249-2-21 |
| REACH SVHC | Not Contained per D(2023)3788-DC (14 Jun 2023) |
| EU RoHS | Compliant per EU 2015/863 |

Multiple Part Product Compliance Statements

- Eu RoHS
- REACH SVHC
- Low-Halogen

Multiple Part Industry Compliance Documents

- IPC 1752A Class C
- IPC 1752A Class D
- Molex Product Compliance Declaration
- IEC-62474
- chemSHERPA (xml)

EU RoHS Certificate of Compliance

Part Details

General

| | |
|----------------|---|
| Status | Active |
| Category | PCB Headers and Receptacles |
| Series | 44432 |
| Description | Micro-Fit BMI Header, Dual Row, Vertical, with PCB Polarizing Peg, 6 Circuits, Tin (Sn) Plating, Kinked Tails |
| Application | Board-to-Board, Power, Wire-to-Board |
| Comments | High Temperature, Square Pin, Solder Type |
| Component Type | PCB Header |
| Product Family | Micro-Fit Connector System |
| Product Name | Micro-Fit BMI |
| UPC | 800753300712 |

Agency

| | |
|-----|---------|
| CSA | LR19980 |
| UL | E29179 |

Electrical

| | |
|-------------------------------|------------------|
| Current - Maximum per Contact | 8.5A |
| Voltage - Maximum | 250V AC (RMS)/DC |

Physical

| | |
|--------------------|----|
| Breakaway | No |
| Circuits (Loaded) | 6 |
| Circuits (maximum) | 6 |

| | |
|--------------------------------|--------------------------------|
| Color - Resin | Black |
| Durability (mating cycles max) | 30 |
| Flammability | 94V-0 |
| Glow-Wire Capable | No |
| Material - Metal | Brass |
| Material - Plating Mating | Tin |
| Material - Plating Termination | Tin |
| Material - Resin | High Temperature Thermoplastic |
| Net Weight | 1.512/g |
| Number of Rows | 2 |
| Orientation | Vertical |
| Packaging Type | Tray |
| PC Tail Length | 3.30mm |
| PCB Locator | Yes |
| PCB Retention | Yes |
| PCB Thickness - Recommended | 1.60mm |
| Pitch - Mating Interface | 3.00mm |
| Plating min - Mating | 5.080µm |
| Plating min - Termination | 5.080µm |
| Polarized to Mating Part | Yes |
| Polarized to PCB | Yes |
| Shrouded | Fully |
| Stackable | No |
| Temperature Range - Operating | -40° to +105°C |
| Termination Interface Style | Through Hole |

Solder Process Data

| | |
|------------------------------|------|
| Max-Duration | 5 |
| Lead-Free Process Capability | WAVE |
| Max-Cycle | 1 |
| Max-Temp | 260 |

Mates With / Use With

Mates with Part(s)

| Description | Part Number |
|--|--------------|
| Micro-Fit BMI Dual Row Receptacle Housings | <u>44133</u> |
| Micro-Fit BMI Right-Angle Dual Row PCB Receptacles | <u>44764</u> |
| Micro-Fit BMI Vertical Dual Row PCB Receptacles | <u>44769</u> |

This document was generated on Sep 26, 2023