



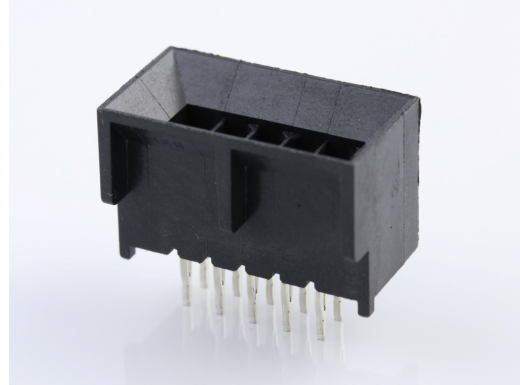
Part Number : [452801052](#)

Product Description : Micro-Fit BMI CPI Compliant Pin Header, Blind Mate Interface, Dual Row, Vertical, 10 Circuits, PA Polyamide Nylon 4/6, UL 94V-0, 0.38µm Gold (Au) Selective Contact Plating, Tin (Sn) Tail Plating

Series Number : 45280

Status : Active

Product Category : PCB Headers and Receptacles



Documents & Resources

Drawings

[Drawing 452801052_sd.pdf](#)

[Packaging Design Drawing PK-45280-002-001.pdf](#)

3D Models and Design Files

[3D Model 452801052_stp.zip](#)

[Symbol Footprint Data SYM-45280-1001-001.zip](#)

Specifications

[Product Specification PS-44300-001-001.pdf](#)

[Test Summary TS-45280-001-001.pdf](#)

Product Environment Compliance

Compliance

GADSL/IMDS	Not Relevant
China RoHS	
EU ELV	Not Relevant
Low-Halogen Status	Not Low-Halogen per IEC 61249-2-21
REACH SVHC	Not Contained per D(2023)3788-DC (14 Jun 2023)
EU RoHS	Compliant per EU 2015/863

Multiple Part Product Compliance Statements

- Eu RoHS

- REACH SVHC

- Low-Halogen

Multiple Part Industry Compliance Documents

- IPC 1752A Class C
- IPC 1752A Class D
- Molex Product Compliance Declaration
- IEC-62474
- chemSHERPA (xml)

EU RoHS Certificate of Compliance

Part Details

General

Status	Active
Category	PCB Headers and Receptacles
Series	45280
Description	Micro-Fit BMI CPI Compliant Pin Header, Blind Mate Interface, Dual Row, Vertical, 10 Circuits, PA Polyamide Nylon 4/6, UL 94V-0, 0.38µm Gold (Au) Selective Contact Plating, Tin (Sn) Tail Plating
Application	Board-to-Board, Power, Wire-to-Board
Component Type	PCB Header
Product Family	Micro-Fit Connector System
Product Name	Micro-Fit BMI CPI
UPC	822350790772

Agency

CSA	LR19980
UL	E29179

Electrical

Current - Maximum per Contact	8.5A
Voltage - Maximum	600V

Physical

Breakaway	No
Circuits (Loaded)	10

Circuits (maximum)	10
Color - Resin	Black
Durability (mating cycles max)	30
Flammability	94V-0
Glow-Wire Capable	No
Guide to Mating Part	Yes
Lock to Mating Part	None
Material - Metal	High Performance Alloy (HPA)
Material - Plating Mating	Gold
Material - Plating Termination	Tin
Material - Resin	High Temperature Thermoplastic
Net Weight	2.080/g
Number of Rows	2
Orientation	Vertical
Packaging Type	Tray
PC Tail Length	4.80mm
PCB Locator	Yes
PCB Retention	Yes
Pitch - Mating Interface	3.00mm
Plating min - Mating	0.381µm
Plating min - Termination	2.540µm
Polarized to Mating Part	Yes
Polarized to PCB	Yes
Shrouded	Fully
Stackable	No
Temperature Range - Operating	-40° to +105°C
Termination Interface Style	Through Hole - Compliant Pin

Solder Process Data

Lead-Free Process Capability	N/A
------------------------------	-----

Mates With / Use With

Mates with Part(s)

Description	Part Number
-------------	-------------

Micro-Fit BMI Receptacle Housing, Dual Row, Panel Mount, 10 Circuits, Polyester, UL 94V-0	<u>0441331000</u>
Micro-Fit BMI Receptacle Header, Dual Row, Right-Angle, with Press- fit Plastic Pegs, 0.38µm Gold (Au) Selective, 10 Circuits	<u>0447641002</u>
Micro-Fit BMI Receptacle Header, Dual Row, Vertical, with Press-fit Plastic Pegs, 0.38µm Gold (Au) Selective, 10 Circuits	<u>0447691002</u>

Application Tooling

Global

Description	Part Number
Insertion Tool for Micro-Fit BMI CPI Header Assemblies	<u>0622002700</u>
Compliant Pin Insertion Flat Rock Tool	<u>0622008400</u>
Removal Tool	<u>0622030450</u>