



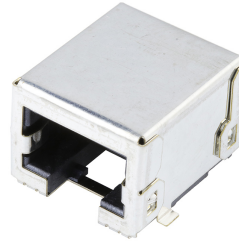
**Part Number :** [956224882](#)

**Product Description :** Modular Jack, Right-Angle, Surface Mount, 8/8, Shielded, Additional Panel Grounding, Reel

**Series Number :** 95622

**Status :** Active

**Product Category :** Modular Jacks and Plugs



---

## Documents & Resources

### Drawings

[Drawing 956224882\\_sd.pdf](#)

[Packaging Design Drawing PK-95122-002.pdf](#)

### 3D Models and Design Files

[3D Model 956224882\\_stp.zip](#)

### Specifications

[Application Specification AS-85513-001-001.pdf](#)

[Product Specification PS-95622-001-001.pdf](#)

---

## Product Environment Compliance

### Compliance

GADSL/IMDS	Not Relevant
China RoHS	
EU ELV	Not Relevant
Low-Halogen Status	Low-Halogen per IEC 61249-2-21
REACH SVHC	Not Contained per D(2023)3788-DC (14 Jun 2023)
EU RoHS	Compliant per EU 2015/863

### [Multiple Part Product Compliance Statements](#)

- Eu RoHS
- REACH SVHC
- Low-Halogen

### [Multiple Part Industry Compliance Documents](#)

- IPC 1752A Class C

- IPC 1752A Class D
- Molex Product Compliance Declaration
- IEC-62474
- chemSHERPA (xml)

EU RoHS Certificate of Compliance

---

## Part Details

### General

Status	Active
Category	Modular Jacks and Plugs
Series	95622
Description	Modular Jack, Right-Angle, Surface Mount, 8/8, Shielded, Additional Panel Grounding, Reel
Comments	Reflow Capable, External Shield
Component Type	PCB Jack
Magnetic	No
Performance Category	3
Power over Ethernet (PoE)	N/A
Product Family	Magnetic and Modular Jacks/Plugs
Product Name	Modular Jack 8/8,RJ45
UPC	822350911672

### Agency

UL	E107635
----	---------

### Electrical

Current - Maximum per Contact	1.5A
Grounding to Panel	Yes
Grounding to PCB	Yes
Shielded	Yes
Voltage - Maximum	125V DC

### Physical

Boot Color	N/A
Color - Resin	Black

Durability (mating cycles max)	2500
Flammability	94V-0
Inverted / Top Latch	No
Jack Height	13.00mm
Keying to Mating Part	None
Lightpipes/LEDs	None
Material - Metal	Copper Alloy
Material - Plating Mating	Gold over Palladium Nickel
Material - Plating Termination	Tin
Material - Resin	High Temperature Thermoplastic
Net Weight	5.745/g
Orientation	Right Angle (Side Entry)
Packaging Type	Embossed Tape on Reel
PCB Locator	Yes
PCB Retention	Yes
PCB Thickness - Recommended	1.57mm
Pitch - Mating Interface	1.02mm
Pitch - Termination Interface	1.27mm
Plating min - Mating	0.051µm, 0.600µm
Plating min - Termination	1.905µm
Port Configuration	1x1
Positions / Loaded Contacts	8/8
Temperature Range - Operating	-40° to +85°C
Termination Interface Style	Surface Mount
Waterproof / Dustproof	No
Wire/Cable Type	N/A

### Solder Process Data

Max-Duration	45
Lead-Free Process Capability	REFLOW
Max-Cycle	3
Max-Temp	260

---



---

This document was generated on Sep 26, 2023