



Part Number : [1301410008](#)

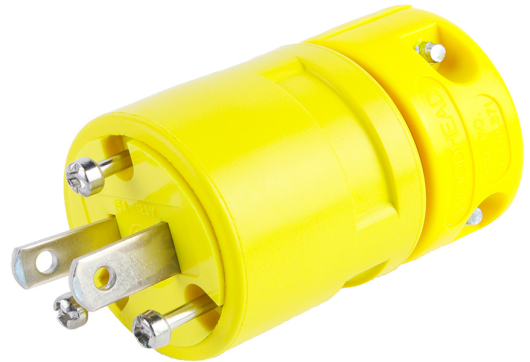
Product Description : Super-Safeway Plug, Polarized, 2 Pole/2 Wire, NEMA 1-15, 125V

Series Number : 130141

Status : Active

Product Category : Wiring Devices

Engineering Number : 1419



---

## Documents & Resources

### Drawings

[Drawing 1301410008\\_sd.pdf](#)

---

## Product Environment Compliance

### Compliance

China RoHS	Not Reviewed
EU ELV	Not Reviewed
Low-Halogen Status	Not Reviewed
REACH SVHC	Not Reviewed
EU RoHS	Not Reviewed

### Multiple Part Product Compliance Statements

- Eu RoHS
- REACH SVHC
- Low-Halogen

### Multiple Part Industry Compliance Documents

- IPC 1752A Class C
- IPC 1752A Class D
- Molex Product Compliance Declaration
- IEC-62474
- chemSHERPA (xml)

### EU RoHS Certificate of Compliance

---

## Part Details

### General

Status	Active
Category	Wiring Devices
Series	130141
Description	Super-Safeway Plug, Polarized, 2 Pole/2 Wire, NEMA 1-15, 125V
IP Rating	N/A
NEMA Configuration	NEMA 1-15
Product Family	Heavy-Duty Industrial Wiring Devices
Product Name	Super-Safeway
Specialty	N/A
Type	Plug
UPC	78678870120

### Agency

CSA	LR6837
UL	E10176

### Electrical

Current - Maximum per Contact	15.0A
GFCI	No
Voltage - Maximum	125V

### Physical

Cord Type	N/A
Flange	No
Flip Lid	No
Gender	Male
Length	N/A
Lighted Connector	No
Locking Blade	No
Poles	2-pole/2-wire
Receptacle Type	N/A

---

---

This document was generated on Sep 26, 2023