



**Part Number :** [1301460103](#)

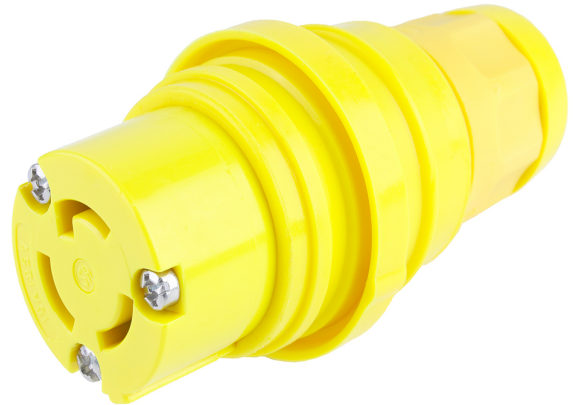
**Product Description :** Watertite Extreme Connector for Male Receptacle with Locking Blade, 2 Pole/3 Wire, NEMA L5-15, 125V, F2, Silicone Husk

**Series Number :** 130146

**Status :** Active

**Product Category :** Wiring Devices

**Engineering Number :** 25W47MB



---

## Documents & Resources

### Drawings

[Drawing 1301460103\\_sd.pdf](#)

### 3D Models and Design Files

[3D Model 1301460103\\_stp.zip](#)

---

## Product Environment Compliance

### Compliance

GADSL/IMDS	Not Relevant
China RoHS	Not Reviewed per SJ/T 11365-2006
EU ELV	Not Relevant
Low-Halogen Status	Not Reviewed per IEC 61249-2-21
REACH SVHC	Not Reviewed per D(2023)3788-DC (14 Jun 2023)
EU RoHS	Not Reviewed per EU 2015/863

### [Multiple Part Product Compliance Statements](#)

- Eu RoHS
- REACH SVHC
- Low-Halogen

### [Multiple Part Industry Compliance Documents](#)

- IPC 1752A Class C
- IPC 1752A Class D

- Molex Product Compliance Declaration
- IEC-62474
- chemSHERPA (xml)

EU RoHS Certificate of Compliance

---

## Part Details

### General

Status	Active
Category	Wiring Devices
Series	130146
Description	Watertite Extreme Connector for Male Receptacle with Locking Blade, 2 Pole/3 Wire, NEMA L5-15, 125V, F2, Silicone Husk
IP Rating	IP69K
NEMA Configuration	NEMA L5-15
Product Family	Watertite Extreme Wet-Location Wiring Solutions
Product Name	Watertite Extreme
Specialty	N/A
Type	Connector
UPC	78678871188

### Agency

CSA	LR6837
-----	--------

### Electrical

Current - Maximum per Contact	15.0A
GFCI	No
Voltage - Maximum	125V

### Physical

Cord Grip Body Size	F2 1/2"
Cord Type	N/A
Flange	No
Flip Lid	No

Gender	Female
Length	N/A
Lighted Connector	No
Locking Blade	Yes
Poles	2-pole/3-wire
Receptacle Type	Single

---

---

This document was generated on Sep 26, 2023