



Part Number : [1301460112](#)

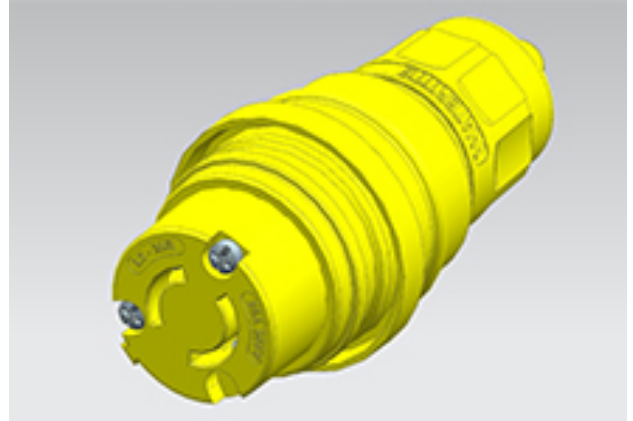
Product Description : Watertite Extreme Connector for Male Receptacle, 2 Pole/2 Wire, NEMA-L2-20, 250V, F2, Silicone Husk

Series Number : 130146

Status : Active

Product Category : Wiring Devices

Engineering Number : 27W07MB



---

## Documents & Resources

### Drawings

[Drawing 1301460112\\_sd.pdf](#)

### 3D Models and Design Files

[3D Model 1301460112\\_stp.zip](#)

---

## Product Environment Compliance

### Compliance

China RoHS	Not Reviewed
EU ELV	Not Reviewed
Low-Halogen Status	Not Reviewed
REACH SVHC	Not Reviewed
EU RoHS	Not Reviewed

### [Multiple Part Product Compliance Statements](#)

- Eu RoHS
- REACH SVHC
- Low-Halogen

### [Multiple Part Industry Compliance Documents](#)

- IPC 1752A Class C
- IPC 1752A Class D
- Molex Product Compliance Declaration
- IEC-62474
- chemSHERPA (xml)

## Part Details

### General

Status	Active
Category	Wiring Devices
Series	130146
Description	Watertite Extreme Connector for Male Receptacle, 2 Pole/2 Wire, NEMA-L2-20, 250V, F2, Silicone Husk
IP Rating	IP69K
NEMA Configuration	NEMA L2-20
Product Family	Watertite Extreme Wet-Location Wiring Solutions
Product Name	Watertite Extreme
Specialty	N/A
Type	Connector
UPC	78678871362

### Agency

CSA	LR6837
-----	--------

### Electrical

Current - Maximum per Contact	20.0A
GFCI	No
Voltage - Maximum	250V

### Physical

Cord Grip Body Size	F2 1/2"
Cord Type	N/A
Flange	No
Flip Lid	No
Gender	Female
Length	N/A
Lighted Connector	No

Locking Blade	Yes
Poles	2-pole/2-wire
Receptacle Type	Single

---

This document was generated on Sep 26, 2023