



Part Number : [14600056](#)

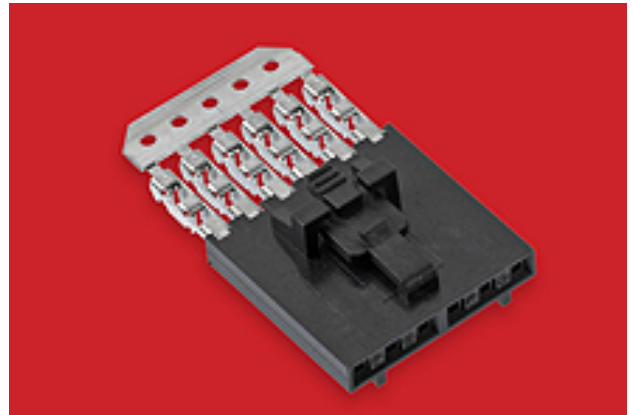
Product Description : 2.54mm Pitch SL Insulation Displacement Connector Assembly, Female, Single Row, Version G, Positive Lock, Wire Size 28 AWG, 3.81µm Tin/Lead (SnPb), 5 Circuits

Series Number : 70400

Status : Active

Product Category : Connector Housings

Engineering Number : 70400-0494



Documents & Resources

Drawings

[Drawing 014600056_sd.pdf](#)


[Packaging Design Drawing PK-70873-0001-001.pdf](#)

3D Models and Design Files

[3D Model 014600056_stp.zip](#)

Product Environment Compliance

Compliance

GADSL/IMDS	Not Relevant
China RoHS	
EU ELV	Not Relevant
Low-Halogen Status	Low-Halogen per IEC 61249-2-21
REACH SVHC	Not Contained per ECHA_01_2020 (16 January 2020)
EU RoHS	Compliant per EU 2015/863

Multiple Part Product Compliance Statements

- Eu RoHS
- REACH SVHC
- Low-Halogen

Multiple Part Industry Compliance Documents

- IPC 1752A Class C
- IPC 1752A Class D

- Molex Product Compliance Declaration
- IEC-62474
- chemSHERPA (xml)

EU RoHS Certificate of Compliance

Part Details

General

Status	Active
Category	Antennas
Series	146168
Description	RHCP Ceramic GPS Antenna
Component Type	Surface Mount Device Antenna
Function	Signal
Product Family	GNSS/GPS Antennas
Product Name	RHCP Ceramic GPS Antenna
Protocol	GPS
Type	GPS Antenna, Internal
UPC	191128000215

Electrical

Band#1 F_End (MHz)	1578
Band#1 F_Start (MHz)	1572
Electrical Connectivity	SMD
Peak Gain (dBi)	5.5 @ 1575 MHz
Return Loss - S11 (dB)	< -15
Total Efficiency	>75% @ 1575 MHz

Physical

Cable Length	N/A
Length	25.00mm
Mounting Style	Surface Mount
Net Weight	9.319/g
Packaging Type	Tray
Polarization	Right Handed Circular
Radiation Pattern	Omnidirectional

Thickness	4.00mm
Width	25.00mm

This document was generated on Sep 26, 2023