



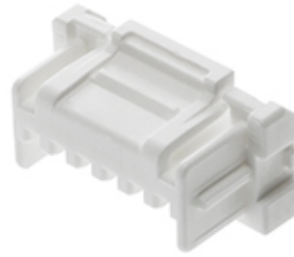
Part Number : [2012002040](#)

Product Description : Spot-On Wire-to-Board Receptacle Housing, 2.00mm Pitch, Single Row, 4 Circuits, Natural

Series Number : 201200

Status : Active

Product Category : Connector Housings



Documents & Resources

Drawings

[Drawing 2012002040_sd.pdf](#)

3D Models and Design Files

[3D Model 2012002040_stp.zip](#)

Specifications

[Application Specification 2011960000-A00.pdf](#)


[Application Specification 2011960000-A01.pdf](#)

[Packaging Specification 2012009200-200.pdf](#)

[Product Specification 2012000000-PS-000.pdf](#)

Product Environment Compliance

Compliance

GADSL/IMDS	Not Relevant
China RoHS	
EU ELV	Not Relevant
Low-Halogen Status	Not Low-Halogen per IEC 61249-2-21
REACH SVHC	Not Contained per D(2023)3788-DC (14 Jun 2023)
EU RoHS	Compliant per EU 2015/863

[Multiple Part Product Compliance Statements](#)

- Eu RoHS
- REACH SVHC
- Low-Halogen

[Multiple Part Industry Compliance Documents](#)

- IPC 1752A Class C
- IPC 1752A Class D
- Molex Product Compliance Declaration
- IEC-62474
- chemSHERPA (xml)

EU RoHS Certificate of Compliance

Part Details

General

Status	Active
Category	Connector Housings
Series	201200
Description	Spot-On Wire-to-Board Receptacle Housing, 2.00mm Pitch, Single Row, 4 Circuits, Natural
Application	Signal, Wire-to-Board
Product Family	Spot-On Wire-to-Board Connector System
Product Name	Spot-On
UPC	191128252140

Physical

Circuits (maximum)	4
Color - Resin	Natural
Gender	Receptacle
Glow-Wire Capable	No
Keying to Mating Part	Yes
Lock to Mating Part	Yes
Material - Resin	PBT
Net Weight	567.000/mg
Number of Rows	1
Packaging Type	Bag
Panel Mount	No
Pitch - Mating Interface	2.00mm
Pitch - Termination Interface	2.00mm
Polarized to Mating Part	Yes

Temperature Range - Operating	-40° to +105°C
-------------------------------	----------------

Mates With / Use With

Mates with Part(s)

Description	Part Number
2.00mm Pitch, Spot-On Vertical Single Row Headers with Potting Capability	<u>201201</u>

Use with Part(s)

Description	Part Number
Spot-On 2.0 Crimp Terminal, Female, Matte Tin (Sn) Plating, 22-26 AWG	<u>/content/molex/molex-dot-com/us/en/products/product-page.html/2011956000.html</u>
Spot-On Terminal Position Assurance (TPA) Wire-to-Board Retainer, 2.00mm Pitch, 4 Circuits, Gray	<u>/content/molex/molex-dot-com/us/en/products/product-page.html/2011964040.html</u>