



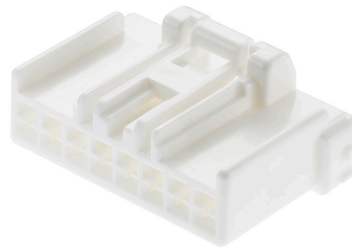
Part Number : [5005920800](#)

Product Description : 2.50mm Pitch CP-2.5 Mini Wire-to-Wire Receptacle Housing, Positive Lock, Single Row, 8 Circuits

Series Number : 500592

Status : Active

Product Category : Connector Housings



Documents & Resources

Drawings

[Drawing 5005920800_sd.pdf](#)

3D Models and Design Files

[3D Model 5005920800_stp.zip](#)

Specifications

[Packaging Specification 5005929200-200.pdf](#)

[Product Specification PS-500592-001-001.pdf](#)

Product Environment Compliance

Compliance

GADSL/IMDS	Not Relevant
China RoHS	
EU ELV	Not Relevant
Low-Halogen Status	Not Low-Halogen per IEC 61249-2-21
REACH SVHC	Not Contained per D(2023)3788-DC (14 Jun 2023)
EU RoHS	Compliant per EU 2015/863

Multiple Part Product Compliance Statements

- Eu RoHS
- REACH SVHC
- Low-Halogen

Multiple Part Industry Compliance Documents

- IPC 1752A Class C
- IPC 1752A Class D

- Molex Product Compliance Declaration
- IEC-62474
- chemSHERPA (xml)

EU RoHS Certificate of Compliance

Part Details

General

Status	Active
Category	Connector Housings
Series	500592
Description	2.50mm Pitch CP-2.5 Mini Wire-to-Wire Receptacle Housing, Positive Lock, Single Row, 8 Circuits
Application	Signal, Wire-to-Wire
Product Family	CP Wire-to-Board and Wire-to-Wire Connector Systems
Product Name	CP-2.5 Mini
UPC	756054724996

Physical

Circuits (maximum)	8
Color - Resin	Natural
Gender	Receptacle
Glow-Wire Capable	No
Material - Resin	Polyester
Net Weight	1604.400/mg
Number of Rows	1
Packaging Type	Bag
Panel Mount	No
Pitch - Mating Interface	2.50mm
Temperature Range - Operating	-40° to +85°C

Mates With / Use With

Mates with Part(s)

Description	Part Number
-------------	-------------

CP-2.5 Mini Single Row Plug Housings	<u>500593</u>
--------------------------------------	---------------

Use with Part(s)

Description	Part Number
CP-2.5 Mini and CP-3.3 Female Crimp Terminals	<u>50397</u>
CP-2.5 Mini Terminal Position Assurance (TPA) Retainers	<u>500817</u>

This document was generated on Sep 26, 2023