



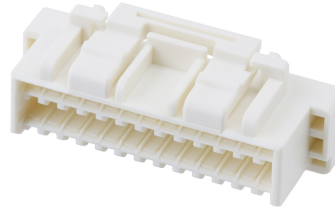
Part Number : [5031492600](#)

Product Description : CLIK-Mate Plug Housing, 1.50mm Pitch, Dual Row, Positive Lock, 26 Circuits, Natural

Series Number : 503149

Status : Active

Product Category : Connector Housings



Documents & Resources

Drawings

[Drawing 5031492600_sd.pdf](#)

3D Models and Design Files

[2D Drawing DXF 5031492600.dxf](#)

[2D Drawing DXF \(PDF\) 5031492600.pdf](#)

[3D Model 5031492600_stp.zip](#)

Specifications

[Application Specification AS-503149-001-001.pdf](#)

[Packaging Specification SPK-503149-001-001.pdf](#)

[Product Specification 5031490000-PS-000.pdf](#)

[Product Specification 5031491000-PS-000.pdf](#)

[Product Specification 5031491001-PS-000.pdf](#)

[Product Specification 5031491002-PS-000.pdf](#)

[Product Specification 5031491003-PS-000.pdf](#)

[Product Specification PS-505406-001-001.pdf](#)

Product Environment Compliance

Compliance

GADSL/IMDS	Not Relevant
China RoHS	
EU ELV	Not Relevant
Low-Halogen Status	Not Low-Halogen per IEC 61249-2-21
REACH SVHC	Not Contained per D(2023)3788-DC (14 Jun 2023)
EU RoHS	Compliant per EU 2015/863

Multiple Part Product Compliance Statements

- Eu RoHS
- REACH SVHC
- Low-Halogen

Multiple Part Industry Compliance Documents

- IPC 1752A Class C
- IPC 1752A Class D
- Molex Product Compliance Declaration
- IEC-62474
- chemSHERPA (xml)

EU RoHS Certificate of Compliance

Part Details

General

Status	Active
Category	Connector Housings
Series	503149
Description	CLIK-Mate Plug Housing, 1.50mm Pitch, Dual Row, Positive Lock, 26 Circuits, Natural
Application	Signal, Wire-to-Board
Product Family	CLIK-Mate Wire-to-Board Connectors
Product Name	CLIK-Mate
UPC	887191689418

Agency

UL	E29179
----	--------

Physical

Circuits (maximum)	26
Color - Resin	Natural
Gender	Plug
Glow-Wire Capable	No
Keying to Mating Part	None
Lock to Mating Part	Yes
Material - Resin	PBT

Net Weight	820.000/mg
Number of Rows	2
Packaging Type	Bag
Panel Mount	No
Pitch - Mating Interface	1.50mm
Pitch - Termination Interface	1.50mm
Polarized to Mating Part	Yes
Stackable	No
Temperature Range - Operating	-40° to +105°C

Mates With / Use With

Mates with Part(s)

Description	Part Number
1.50mm Pitch CLIK-Mate Right-Angle Dual Row PCB Receptacles	<u>213228</u>
1.50mm Pitch CLIK-Mate Right-Angle Dual Row PCB Receptacles	<u>503148</u>
1.50mm Pitch CLIK-Mate Vertical Dual Row PCB Receptacles	<u>213227</u>
1.50mm Pitch CLIK-Mate Right-Angle Dual Row PCB Receptacles	<u>503154</u>

Use with Part(s)

Description	Part Number
Pre-Crimped Lead CLIK-Mate 1.50mm Male-to-CLIK-Mate 1.50mm Male, Tin (Sn) Plating, 300.00mm Length, 24 AWG, Black	<u>/content/molex/molex-dot-com/us/en/products/product-page.html/797581011.html</u>
1.50mm Pitch CLIK-Mate Male Crimp Terminals	<u>502579</u>
1.50mm Pitch CLIK-Mate Male Crimp Terminals	<u>503429</u>
CLIK-Mate 1.50mm Pitch Male Crimp Terminals	<u>213028</u>
CLIK-Mate 1.50mm Pitch Male Crimp Terminals	<u>213029</u>
Pre-Crimped Lead Clik-Mate Male-to-Clik-Mate Male	<u>215710</u>
Pre-Crimped Lead Clik-Mate Male-to-Pigtail	<u>215711</u>

This document was generated on Sep 26, 2023