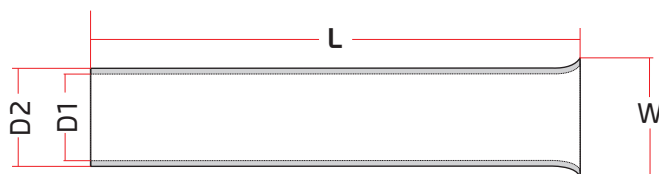


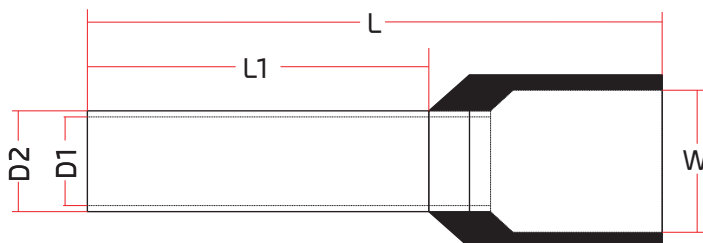
Uninsulated and Insulated Cable Ferrules, DIN Color Coding, 0.5 - 6.0mm², 3750pcs



Uninsulated



Insulated



Technical Data:

Color coding: DIN
 Terminal material: Copper
 Terminal coating: Tin
 Insulation material: PVC
 Max. voltage rating: 600V
 Max. temperature rating:
 uninsulated: 105°C max.
 Insulated: 75°C max.

Wire Guide	Cross Section	Dimension (mm)					Color	Quantity
		L	L1	øD1	øD2	W		
20 AWG	0.75 mm ²	8.0 ±0.2		1.1 ±0.1	1.5 ±0.1	1.9 ±0.2	Silver	500 Pcs
18 AWG	1.00 mm ²	8.0 ±0.2		1.4 ±0.2	1.7 ±0.2	2.2 ±0.3	Silver	500 Pcs
16 AWG	1.50 mm ²	8.0 ±0.2		1.7 ±0.2	2.0 ±0.2	2.5 ±0.3	Silver	500 Pcs
14 AWG	2.50 mm ²	8.0 ±0.2		2.2 ±0.2	2.6 ±0.2	3.3 ±0.3	Silver	500 Pcs
12 AWG	4.00 mm ²	12.0 ±0.2		2.8 ±0.2	3.2 ±0.2	3.9 ±0.3	Silver	400 Pcs
22 AWG	0.50 mm ²	14.2 ±1.0	8.0 ±0.6	0.9 ±0.1	1.3 ±0.1	2.5 ±0.3	White	250 Pcs
20 AWG	0.75 mm ²	15.1 ±1.0	8.0 ±0.6	1.2 ±0.1	1.5 ±0.2	2.8 ±0.3	Grey	250 Pcs
18 AWG	1.00 mm ²	14.7 ±1.0	8.0 ±0.3	1.4 ±0.1	1.8 ±0.2	2.9 ±0.2	Red	250 Pcs
16 AWG	1.50 mm ²	15.4 ±1.0	8.0 ±0.3	1.6 ±0.1	2.0 ±0.1	3.4 ±0.2	Black	250 Pcs
14 AWG	2.50 mm ²	15.6 ±1.0	8.0 ±0.3	2.2 ±0.1	2.6 ±0.1	4.1 ±0.3	Blue	200 Pcs
12 AWG	4.00 mm ²	17.2 ±1.0	9.0 ±0.6	2.8 ±0.2	3.2 ±0.2	4.8 ±0.3	Grey	100 Pcs
10 AWG	6.00 mm ²	20.9 ±1.0	12.0 ±0.6	3.5 ±0.2	3.9 ±0.2	6.2 ±0.3	Yellow	50 Pcs