

KE7200 / KE7200 PRO Kit

KE7010 / KE7010 Kit / KE7010 PRO Kit

Network Tester for IT and TC

Made in Germany



KE7200:
Test Instrument + 2 × KE7010



KE7200 PRO Kit:
Test Instrument + 4 × KE7010 + P310



At a Glance

- Detection and localization of cable faults
- Integrated, configurable cable database
- TDR cable length measurement up to 200 m
- Network scan and ping stress test
- Detection of link speed (10/100/1000 MBit)
- Portfinder function and (link blink function)
- Power over Ethernet load test up to 90 watts, PoE+/++/LTPoE (IEEE802.3af/at/bt)
- Sound transmission mode for line identification
- Optional function: Detection of branches / stub lines (bridge taps) in the TC network
- Memory function
- Result management and log creation with free software
- Self-test
- 60 V DC external power protection

The **KE7200** network tester with memory function is the ideal assistant for initial startup tests, troubleshooting, and documentation in data and telecommunications networks at an outstanding price/performance ratio. Versatile functions, the large graphic display and intuitive operation enable the user to work efficiently. Long battery runtimes and the robust housing are the perfect prerequisites for daily use.

To begin with, the small **KE7010** remote units are connected to the network ports being measured. The **KE7200** is connected to the network socket and detects which of the numbered **KE7010** remote units is connected to this line. Up to 32 individual **KE7010** remote units can be managed simultaneously by the **KE7200**.

The **KE7200** checks wires and wire pairs of the cable routes for continuity, breakage, short circuits, reversed connections, and split pairs. In the case of short circuits and interruptions, the **KE7200** even determines the distance to the fault location via a precise TDR method. With the user-configurable cable database, unknown cable and wiring diagrams are a thing of the past. An optional software function can be used to find branches / stub lines (bridge taps) in telecommunications networks in buildings.

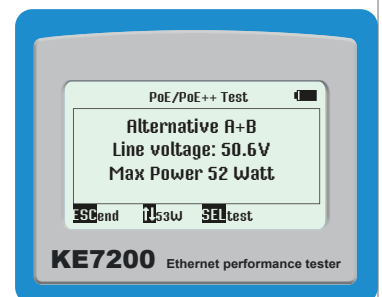
Active network tests, such as the detection of the link speed in 10/100/1000 Mbit networks, the listing of the existing network subscribers, including the name, IP, and MAC address of the participant and the ping stress test with detailed statistics, inform the user about the network and any faulty components. To identify network ports on the patch panel/hub/router/switch, the port finder function can be used, causing the LED on the hub/router/switch to flash.

The **KE7200** checks connections for the availability of Power over Ethernet (PoE, PoE+, PoE++, and LTPoE) and determines the available power via a load test.

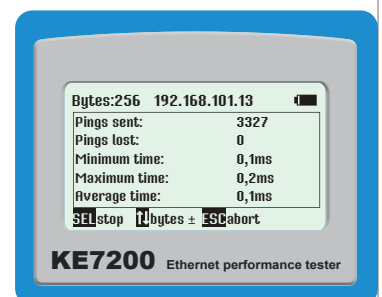
In addition, the integrated sound transmission mode can be used to identify lines unequivocally when they are unused. A search signal receiver (**P310/P410***) is needed for this (**P310** included in the **KE7200 PRO kit** ; optionally available for purchase separately).

Using the associated **KE7200 Manager** software, you can manage your measurement result and generate individual logs.

* P410 included in **KE7207** and **KE7208**; optional available for purchase separately



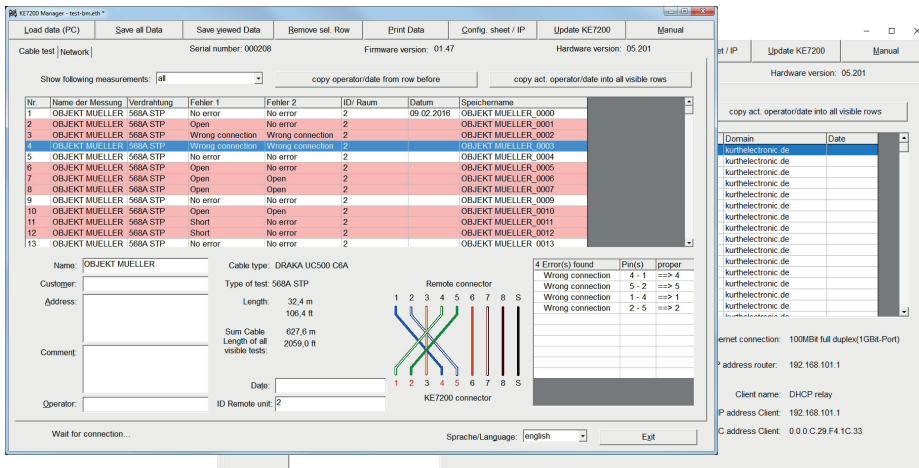
PoE test with load test



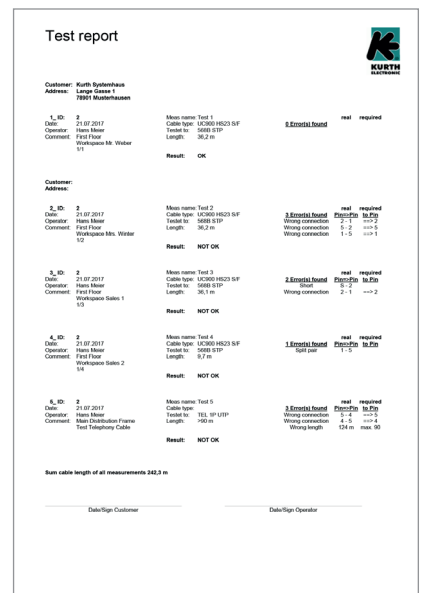
Configurable ping stress test

KE7200 Manager

Cable measurements and network information can be stored in the **KE7200**. The data can be transferred to the downloadable **KE7200 Manager** Windows PC freeware (for Windows 10). The program provides extensive measurement details and allows the creation of customer-specific measurement logs.



Ethernet Manager PC software



Created log

KE7200 Specifications

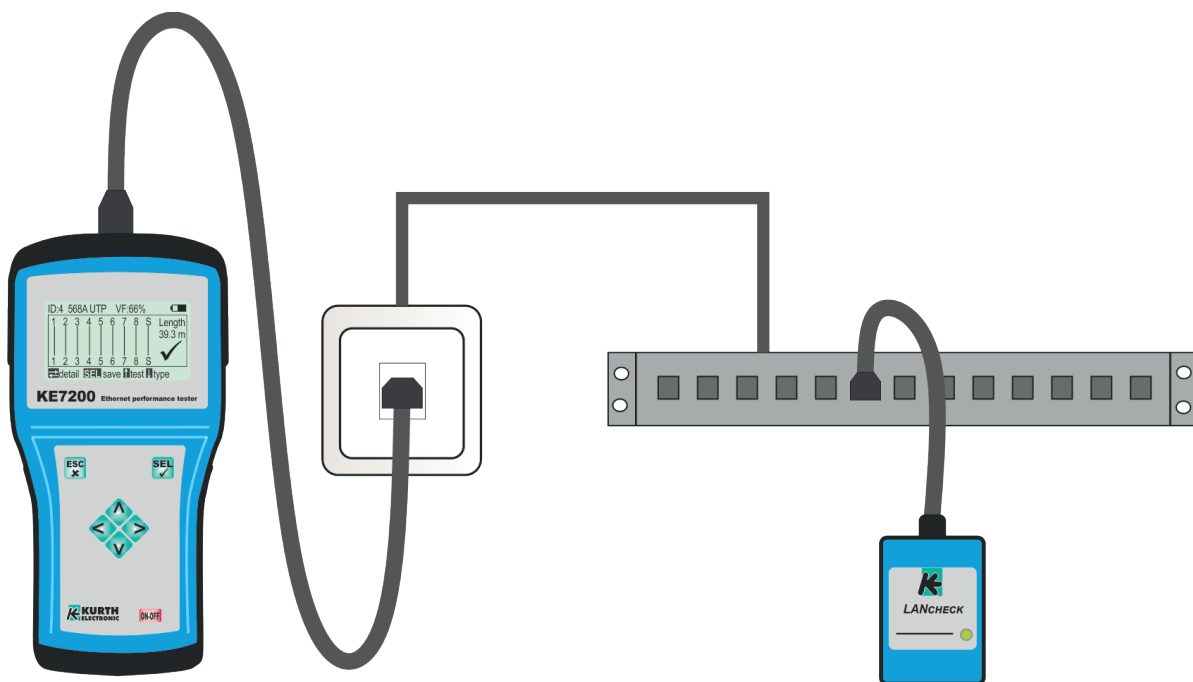
| | |
|--|--|
| Connections | RJ-45 socket Adapter: RJ-45 to coaxial cable, RJ-11 to banana plug, including crocodile clips for banana plug |
| Cable Test (Ethernet cable, coaxial cable, telecommunications cable) | Detection of reversed connections, short circuits, interruptions, split pairs (as of 2 m), testing of the data line assignment with pin and pair assignment (wire mapping) Clear graphical display for fast error identification TDR function: Measurement of individual wire lengths from 2 m to 200 m Cable database: 15 wiring versions predefined for cable test and creation of own definitions possible as of 2 wires, including Profinet; 16 cable types predefined with VF for TDR length measurement and creation of own cable types possible Check for external voltage before test start |
| Network Tests (Ethernet cable) | IP test <ul style="list-style-type: none"> • Connection to the network via DHCP or with static IP (own IP and MAC address configurable) • List of active network subscribers with name, IP and MAC address • Detection of network speed 10/100/1000 Mbit Ping test <ul style="list-style-type: none"> • Targeted ping of individual addresses and simultaneous ping stress test • Ping frame sizes adjustable from 32-1024 bytes • Display of ping results (received/lost) and response times (min./max./average) |
| Power over Ethernet Test (Ethernet cable) | Activation of PoE/PoE+/PoE++/LTPOE functions Measurement of the voltage in V and determination of the power (up to 90 W) according to IEEE802.3af/at/bt |
| Port Finder Function (Ethernet cable) | Link blink function for identifying ports on routers/switches/hubs: Transmission of an NLP signal that switches the link LED associated with the port on and off in the same cycle on the most common hubs, switches, or routers. |
| Tone Mode (Ethernet cable) | Emission of a search tone signal; using the probe search signal receiver, the associated network port can be clearly identified on the patch panel, etc. 4 search frequencies available for selection: 1000 Hz; 880/1000 Hz; 2600 Hz, and 2600/1900 Hz Compatible probes: P310 (D130B), P410 (D140B) |
| Branch Detection (coaxial cable, telecommunications cable) <i>optional function</i> | Software option for precise localization of branches / stub lines (bridge taps) in telecommunications networks in buildings. Determines existence of and distance to the branch / stub line. Can be purchased as an option; see ordering information. |
| Additional Functions | <ul style="list-style-type: none"> • Memory function for 14,000 entries • Self-test |
| External Voltage Protection | 60 V DC |
| Housing | Stable, impact-resistant ABS housing with fall protector |
| Display | Illuminated display, adjustable time for display backlighting |
| Power Supply | 4x 1.5 V (AA, LR6, alkaline/mignon) batteries, with the operating period depending on the test type, the display backlighting duration, and the battery type and condition Automatic device switch-off (time adjustable) |
| Dimensions | 195 x 100 mm |
| Weight | 380 g (without batteries) |
| Menu Languages | German, English |
| Operation Environment | Working temperature 0 °C ... +50 °C Storage temperature -25 °C ... +75 °C Humidity 90%, non-condensing |

KE7010 Specifications

| | |
|------------------------------|---|
| Function | Active remote unit with microprocessor Pass/Fail indication with green LED ID freely programmable from 1-32 (at most 32 KE7010 units can be managed and used by the KE7200) |
| Connection | RJ-45 socket |
| Housing | Stable, impact-resistant ABS housing |
| Dimensions | 78 × 45 mm |
| Weight | 30 g |
| Power Supply | Via RJ-45 |
| Operation Environment | Working temperature 0 °C ... +50 °C Storage temperature -25 °C ... +75 °C Humidity 90%, non-condensing |

P310 Specifications

| | |
|---------------------|---|
| Function | Traditional search signal receiver (probe) |
| Features | Filter signal LED Flashlight function Test tip made of carbon fiber reinforced plastic 3.5 mm headphone socket Separate battery compartment |
| Housing | Stable, impact-resistant ABS housing with silicone actuation keys |
| Dimensions | 220 × 40/34 × 25 mm |
| Weight | 80 g without a battery |
| Power Supply | 9-V battery; approx. 100-hour operating period (depending on the battery type and condition) |
| Range | Signal identification occurs directly at the network port (at the patch panel, router, hub, switch). |



Sample application

Order Information

| Name | Description | Article Number |
|--------------------------------|--|----------------|
| KE7200 | KE7200* network tester with 2 KE7010 remote units 2× short RJ-45 test cords, 1× long RJ-45 test cord, 1× RJ-11 test cord to banana plug, including plug-on crocodile clips, 1× RJ-45 coax. adapter set (2× RJ-45 plug adapters to BNC, 2× BNC plug adapters to F-female), carrying pouch includes KE7200 Manager PC software (download from website) | D720A |
| KE7200 PRO Kit | KE7200* network tester with 4 KE7010 remote units and P310** probe 2× short RJ-45 test cords, 1× long RJ-45 test cord, 1× RJ-11 test cord to banana plug, including plug-on crocodile clips, 1× RJ-45 coax. adapter set (2× RJ-45 plug adapters to BNC, 2× BNC plug adapters to F-female), carrying pouch includes KE7200 Manager PC software (download from website) | D723A |
| Branch Detection | Software option for the KE7200 for the detection of branches / stub lines (bridge taps) in buildings. Determines the presence of and distance to the branch. Please specify when ordering the KE7200/KE7200 PRO kit. Can be reordered via our service. | D720S |
| KE7010 | 1× remote unit for KE7200 | D701B |
| KE7010 Kit | 4× remote units for KE7200 | D701C |
| KE7010 PRO Kit | 4× remote units for KE7200 and P310** probe | D701D |
| P310** | Traditional search signal receiver (probe) | D130B |
| Accessories | | |
| RJ45 to coaxial adapter | RJ-45 to coaxial adapter set consisting of 2× RJ-45 plug adapters to BNC, 2× BNC plug adapters to F-female | Z170A |
| Replacement test tips | 3 test tips, 4 mm, for P310 search signal receiver / 410 probe / 510 probe (up until year of manufacture 2009) | Z130A |
| Replacement test tips | 3 test tips, with bayonet lock, for P310 search signal receiver / 410 probe / 510 probe (with LED, up until year of manufacture 2009) | Z130B |
| ITK carrying pouch | Protective pouch with instrument and cable compartment for the KE7200, with carrying strap | Z170T |
| Instrument case | Blue instrument case with Kurth Electronic imprint For storing line locator kits (KE301, KE401, KE501, KE701, KE702, KE801), network testers (KE7100, KE7200), or fiber optic test equipment (KE8000, KE80001, KE8200) With matching foam insert (please specify instrument type when ordering) | Z130K |
| Instrument case L | Universal Kurth L-Boxx 136 instrument case (Sortimo), black With lid insert and cut insert set for individual self-cutting as well as templates for cutting to accommodate the xDSL, FO, and LAN tester series from Kurth Electronic 445 × 358 × 152 mm | Z170K |
| Protective pouch L | Large protective pouch With 4 separate instrument and cable compartments and with an all-round lid and carrying strap 360 × 240 × 180 mm | Z170L |

* 4× 1.5 V (AA, LR6, alkaline/mignon) batteries required for operation. Not included with the instrument.

** 9-volt battery required for operation. Not included with the instrument.

1/8.23 3-447-205-03

© Gossen Metrawatt GmbH

Prepared in Germany • Subject to change, errors excepted

All trademarks, registered trademarks, logos, product names, and company names are the property of their respective owners.