

ZOTAC

**ZBOX**

**USER'S MANUAL**

PI430AJ

P SERIES

---

# ZOTAC ZBOX pico User's Manual



No part of this manual, including the products and software described in it, may be reproduced, transmitted, transcribed, stored in a retrieval system, or translated into any language in any form or by any means, except by the purchaser for backup purposes, without the express written permission of ZOTAC.

Products and corporate names mentioned in this manual may be registered trademarks or copyrights of their respective companies, and are used for identification purposes only. All trademarks are the property of their respective owners.

Every effort has been made to ensure the contents of this manual are correct and up to date. However, the manufacturer makes no guarantee regarding the accuracy of its contents, and reserves the right to make changes without prior notice.

---

## Table of Contents

<b>Product specifications</b>	<b>3</b>
<b>Safety information</b>	<b>4</b>
Setting up your system	4
Care during use	4
<b>Welcome</b>	<b>5</b>
Package contents	5
<b>Getting to know your ZOTAC ZBOX pico</b>	<b>6</b>
Front view	6
Rear view	7
<b>Customizing the ZOTAC ZBOX pico</b>	<b>8</b>
Installing M.2 PCIe x4 / SATA SSD module	9
<b>Mounting the ZOTAC ZBOX pico to an LCD monitor</b>	<b>10</b>
<b>Using your ZOTAC ZBOX pico</b>	<b>12</b>
Configuring a wireless connection	12
Configuring audio output via an HDMI device	13
<b>FCC Compliance Statement</b>	<b>14</b>

---

# Product specifications

## Product Dimensions

- 114.8mm x 76mm x 23.8mm

## Processor

- Intel® Core™ i3-N300 Processor (8-core 0.8GHz, up to 3.8GHz)

## Graphics processor

- Intel UHD Graphics
- 1x HDMI 2.0 (max resolution: 3840x2160@60Hz)
- 1x DP 1.4 (max resolution: 4096x2160@60Hz)
- 1x DP 1.4 via USB-C (max resolution: 4096x2160@60Hz)

## Memory

- 8 GB LPDDR5 onboard memory

## USB ports

- 3x USB 3.2 (10 Gbps, 1x Type C)

## Audio

- Analog audio combo (CTIA) for microphone output / Mic in

## Storage support

- M.2 NVMe PCIe 3.0 x4 / SATA slot (2230, 2242, 2280)
- Micro SDHC/SDXC card reader

## Networking

- 10/100/1000 Mbps Ethernet

## Wireless networking

- Intel WiFi 6
- Bluetooth 5.2

## Power

- 5V/5A Power Supply

## Operating System

- Windows 11 ready

---

## Safety information

Your ZOTAC ZBOX pico is designed and tested to meet the latest standards of safety for information technology equipment. However, to ensure your safety, it is important that you read the following safety instructions.

### Setting up your system

- ❖ Read and follow all instructions in the documentation before you operate your system.
- ❖ Do not use this product near water or a heat source such as a radiator.
- ❖ Set up the system on a stable surface.
- ❖ Openings on the chassis are for ventilation. Do not block or cover these openings. Make sure you leave plenty of space around the system for ventilation. Never insert objects of any kind into the ventilation openings.
- ❖ Use this product in environments with ambient temperatures between 0°C and 35°C.

### Care during use

- ❖ Do not walk on the power cord or allow anything to rest on it.
- ❖ Do not spill water or any other liquids on your system.
- ❖ When the system is turned off, a small amount of electrical current still flows. Always unplug all power, modem, and network cables from the power outlets before cleaning the system.
- ❖ If you encounter the following technical problems with the product, unplug the power cord and contact a qualified service technician or your retailer.
  - The power cord or plug is damaged.
  - Liquid has been spilled onto the system.
  - The system does not function properly even if you follow the operating instructions.
  - The system was dropped or the cabinet is damaged.

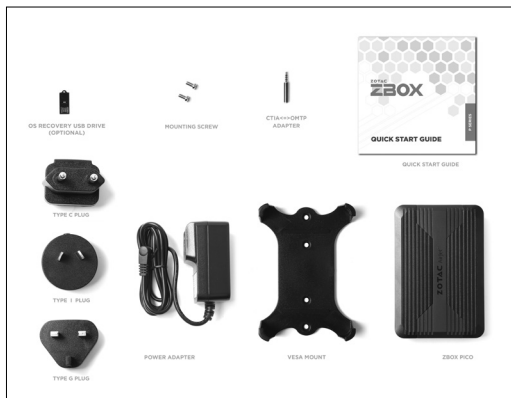
---

## Welcome

Congratulations on your purchase of the ZOTAC ZBOX pico. The following illustration displays the package contents of your new ZOTAC ZBOX pico. Please contact your retailer if any of the below items are damaged or missed.

### Package contents

- 1 x ZOTAC ZBOX pico
- 1 x Mounting bracket
- 2 x Mounting screws
- 1 x AC adapter
- 1 x CTIA<=>OMTP adapter
- 1 x OS Recovery USB Drive (optional)
- 1 x Warranty Card
- 1 x Quick Start Guide



---

## Getting to know your ZOTAC ZBOX pico

### Front view



Refer to the diagram below to identify the components on the front of the ZBOX pico

#### 1. Power button

The power button turns the system ON and OFF.

#### 2. USB 3.2 Type-C port

The USB 3.2 type-C port supports the SuperSpeed USB 3.2 devices. Use this port for USB 3.2 devices for maximum performance with USB 3.2 compatible devices. It supports DisplayPort via USB-C to DisplayPort cable to broadcast high-definition video (cable not included).

#### 3. USB 3.2 ports

The USB 3.2 port supports SuperSpeed USB 3.2 devices and is backwards compatible with USB 3.1/3.0/2.0/1.1 devices. Use this port for USB 3.2 devices for maximum performance with USB 3.2 compatible devices.

#### 4. Memory card reader

The built-in memory card reader reads micro SD/SDHC/SDXC cards used in devices such as digital cameras, MP3 players, mobile phones and PDAs.

---

## Rear view



### 1. Power input (DC 5V, 5A)

The supplied power adapter converts AC power to DC power for use with this jack. Power supplied through this jack supplies power to the mini-PC. To prevent damage to the mini-PC, always use the supplied power adapter.

### 2. DisplayPort

DisplayPort supports both external (box-to-box) and internal (laptop LCD panel) display connections.

### 3. HDMI port

The HDMI (High Definition Multimedia Interface) port supports a UHD device such as an LCD TV or monitor to allow viewing on a larger external display.

### 4. Combo Headphone/Microphone jack (3.5mm)

The combo headphone/microphone jack (3.5mm) is used to connect the system's audio out signal to amplified speakers, 3-pole headphones or 4-pole OMTP headphones.

Note: The combo headphone/microphone jack does not support the traditional microphone.

### 5. Ethernet port

The eight-pin RJ-45 LAN port supports standard Ethernet cable for connection to a local network.

Note 1: The power adapter may get warm or hot when in use. Do not cover the adapter and keep it away from your body.

Note 2: Due to the unique design, some connectors are placed upside down.



---

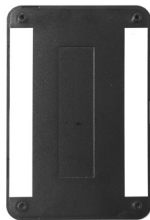
## Customizing the ZOTAC ZBOX pico

Before installing hardware, please follow the instructions below to remove the cover of your ZOTAC ZBOX pico.

1. Loosen the 4 screws securing the bottom cover.



2. Remove the bottom cover.



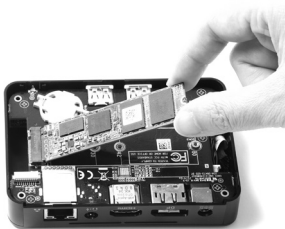
---

## Installing M.2 PCIe x4 / SATA SSD module

1. Locate the M.2 SSD slot and remove the screw.



2. Insert an M.2 SSD module into the slot at a 45 degree angle.



3. Attach the screw to the M.2 SSD module as shown below.



Note: PLUS / Windows models include SSD pre-installed.

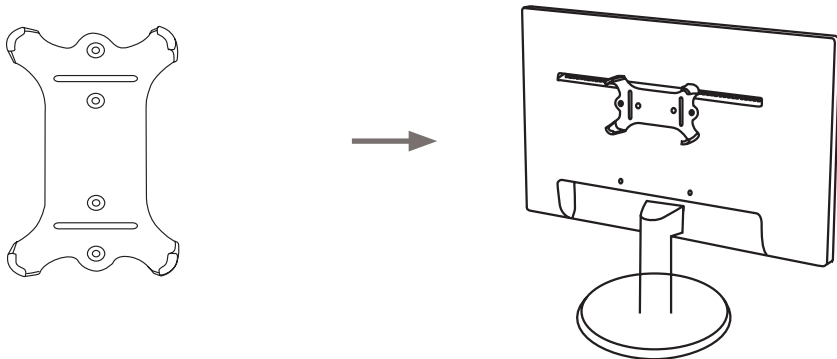
---

## Mounting the ZOTAC ZBOX pico to an LCD monitor

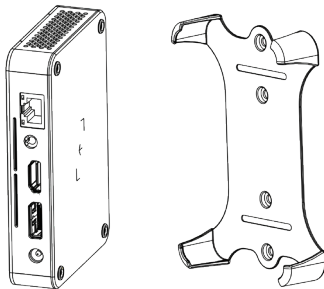
You can attach the ZOTAC ZBOX pico to the back of a VESA75/100 compliant display.

1. Secure the mounting bracket to the LCD monitor using 2 screws.

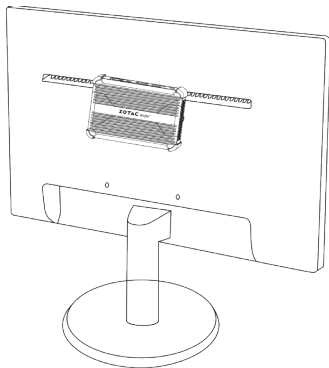
Disclaimer: ZOTAC is not liable for damages resulting from an improper installation.



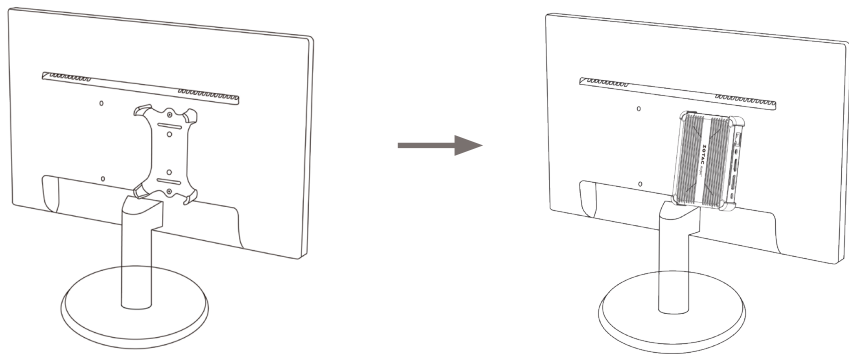
2. Attach the ZOTAC ZBOX pico to the VESA mount and gently press down to secure the ZBOX pico to the mount.



- 
3. Connect the ZOTAC ZBOX pico to the LCD monitor with an HDMI cable.



Note: You can also mount the ZOTAC ZBOX pico vertically as shown in the picture below.



---

## Using your ZOTAC ZBOX pico

### Installing drivers and software

The ZOTAC ZBOX barebone version does not ship with an operating system preinstalled and driver. The user should download the devices driver from ZOTAC website.

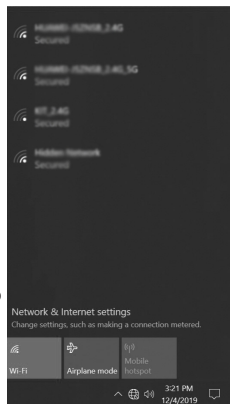
### Configuring a wireless connection

Please follow the instructions below to connect to a wireless network:

1. Double-click the wireless network icon in the notification area.
2. Select the wireless network you want to connect to from the list and click Connect.
3. After connection is established, you will see “Connected.”

Note 1: For security concerns, Do NOT connect to an unsecured network, otherwise, the transmitted information without encryption might be visible to others.

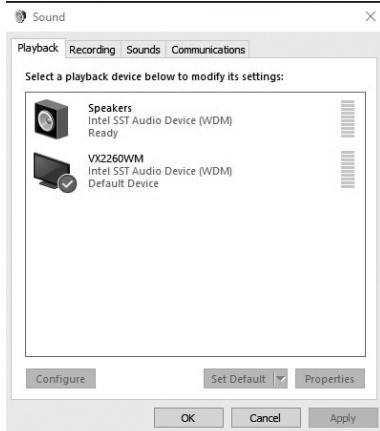
Note 2: Enter the network security key if necessary.



## Configuring audio output via an HDMI device

Follow the steps below to enable audio output via HDMI when connecting the ZOTAC ZBOX pico to a TV or receiver via HDMI.

1. Access the Sound settings via the system Control Panel.
2. Under Playback devices, click the display device that corresponds with your HDMI audio compatible display
3. Click the “Set Default” button in the lower right hand corner.
4. Click “OK” to exit the setup.



---

## **FCC Compliance Statement**

If the device is designed and intended to be sold in the USA or Canada the following statements apply.

The importer in USA is responsible to issue an FCC SDOC for this product.

## **FCC Class B Compliance Statement**

### **DOC (INDUSTRY CANADA) NOTICES**

#### **Notice to Users of Radios and Television:**

This class B digital apparatus complies with Canadian ICES-003.

The following statement applies to the products covered in this manual, unless otherwise specified herein. The statement for other products will appear in the accompanying documentation.

#### **NOTE:**

This equipment has been tested and found to comply with the limits for a "Class B" digital device, pursuant to Part 15 of the FCC rules and meets all requirements of the Canadian Interference-Causing Equipment Standard ICES-003 for digital apparatus. These limits are designed to provide reasonable protection against harmful interference in a residential installation. This equipment generates, uses and can radiate radio frequency energy and, if not installed and used in strict accordance with the instructions, may cause harmful interference to radio communications. However, there is no guarantee that interference will not occur in a particular installation. If this equipment does cause harmful interference to radio or television reception, which can be determined by turning the equipment off and on, the user is encouraged to try to correct the interference by one or more of the following measures:

- Reorient or relocate the receiving antenna.
- Increase the separation between equipment and the receiver.
- Connect the equipment into an outlet on a circuit different from that to which the receiver is connected.
- Consult the dealer or an experienced radio/TV technician for help.

ZOTAC is not responsible for any radio or television interference caused by unauthorized modifications of this equipment or the substitution or attachment of connecting cables and equipment other than those specified by ZOTAC. The correction of interferences caused by such unauthorized modification, substitution or attachment will be the responsibility of the user.

---

The use of shielded I/O cables is required when connecting this equipment to any and all optional peripheral or host devices. Failure to do so may violate FCC and ICES rules.

### **FCC Radiation Exposure Statement**

This equipment complies with FCC radiation exposure limits set forth for an uncontrolled environment.

The transmitters in this device must not be co-located or operated in conjunction with any other antenna or transmitter.

To prevent radio interference to the licensed service, this device is intended to be operated indoors and away from windows to provide maximum shielding. Equipment (or its transmit antenna) that is installed outdoors is subject to licensing.

Users are not authorized to modify this product. Any modifications invalidate the warranty.

This equipment may not be modified, altered, or changed in any way without signed written permission from ZOTAC. Unauthorized modification will void the equipment authorization from the FCC and Industry Canada and the warranty.



# MINI MORE POSSIBILITIES

 [facebook.com/zotac](https://facebook.com/zotac)

 [twitter.com/zotac](https://twitter.com/zotac)

 [youtube.com/zotacofficial](https://youtube.com/zotacofficial)

 [vimeo.com/zotac](https://vimeo.com/zotac)

 [instagram.com/zotac\\_official](https://instagram.com/zotac_official)



209-MB473-00X0F



**ZOTAC.COM**