

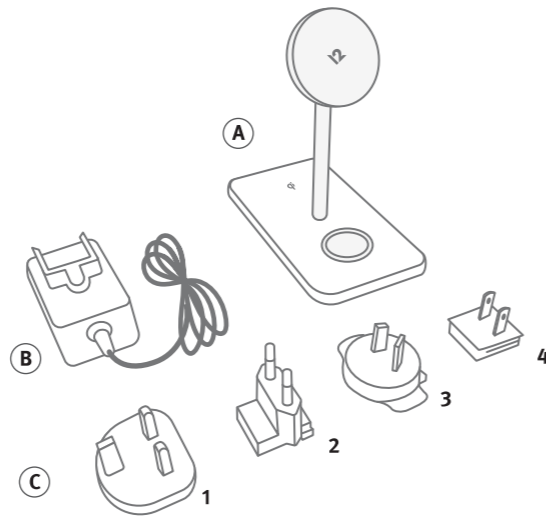
HiRise 3 Deluxe owner's guide

Have questions?

thank you

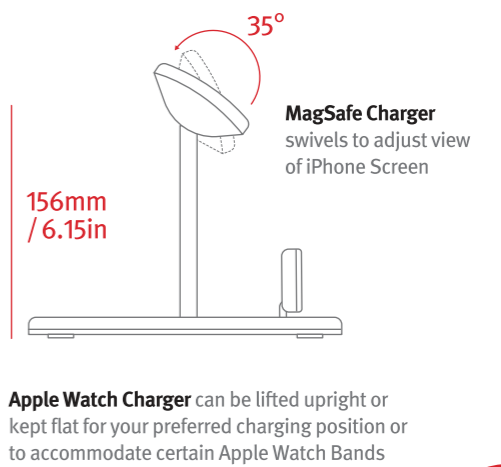
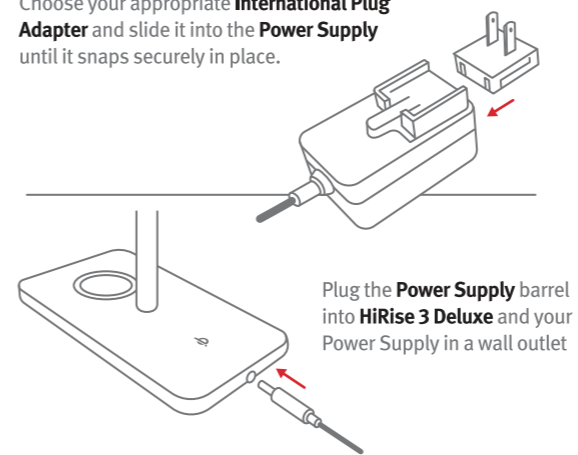
What's in the box:

- A** HiRise 3 Deluxe, 3-in-1 desktop charging stand with MagSafe
- B** Power Supply with 1.5 meters (4.92 feet) cord
- C** International Plug Adapters
 1. UK, Hong Kong, Singapore
 2. Continental Europe
 3. Australia, New Zealand
 4. North America, Japan



Getting Started:

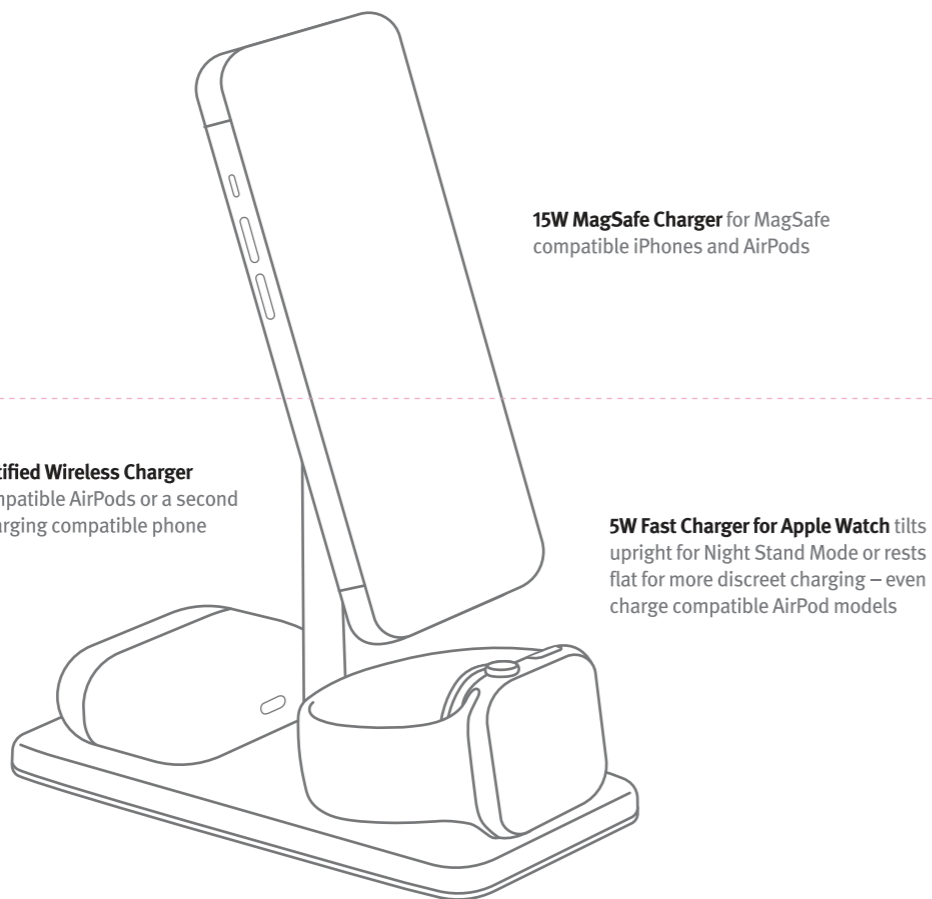
Choose your appropriate **International Plug Adapter** and slide it into the **Power Supply** until it snaps securely in place.



More

Charging your Devices

HiRise 3 Deluxe is more flexible than you think, see below to learn all the different devices you can charge with HiRise.



HiRise 3 Deluxe Charging Stand Tech Specs

Input: DC Jack Vdc 12V-15V
 Output: 5W/7.5W/15W
 Top MagSafe Output: 15W Max
 Base Qi Output: 7.5W Max
 Apple Watch Output: 5W Max (Fast Charger)
 Charging Efficiency: 5V: ≥66%; 9V: ≥72%; 12V: ≥72%;

FCC ID: 2AREB-TS2303

This device complies with part 15 of the FCC Rules. Operation is subject to the following two conditions:

1. This device may not cause harmful interference, and
2. This device must accept any interference received, including interference that may cause undesired operation.

Any Changes or modifications not expressly approved by the party responsible for compliance could void the user's authority to operate the equipment.

Note: This equipment has been tested and found to comply with the limits for a Class B digital device, pursuant to part 15 of the FCC Rules. These limits are designed to provide reasonable protection against harmful interference in a residential installation. This equipment generates uses and can radiate radio frequency energy and, if not installed and used in accordance with the instructions, may cause harmful interference to radio communications. However, there is no guarantee that interference will not occur in a particular installation. If this equipment does cause harmful interference to radio or television reception, which can be determined by turning the equipment off and on, the user is encouraged to try to correct the interference by one or more of the following measures:

- Reorient or relocate the receiving antenna.
- Increase the separation between the equipment and receiver.
- Connect the equipment into an outlet on a circuit different from that to which the receiver is connected.
- Consult the dealer or an experienced radio/TV technician for help.

This equipment complies with FCC radiation exposure limits set forth for an uncontrolled environment. This equipment should be installed and operated with minimum distance 20cm between the radiator & your body.

CE DECLARATION OF CONFORMITY

Twelve South declares that this product is in compliance with the essential requirements and other relevant provisions of applicable EC directives. For Europe, a copy of the Declaration of Conformity for this product may be obtained by visiting www.twelvetosouth.com

IC ID: 24385-TS2303

This device complies with Industry Canada's licence-exempt RSS standard(s). Operation is subject to the following two conditions:

1. This device may not cause interference, and
2. This device must accept any interference, including interference that may cause undesired operation of the device.

Le présent appareil est conforme aux CNR d'Industrie Canada applicables aux appareils radio exempts de licence. L'exploitation est autorisée aux deux conditions suivantes:

1. L'appareil ne doit pas produire de brouillage, et
2. L'utilisateur de l'appareil doit accepter tout brouillage radioélectrique subi, même si le brouillage est susceptible d'en compromettre le fonctionnement.

This Class B digital apparatus complies with Canadian ICES-003.

Cet appareil numérique de la classe B est conforme à la norme NMB-003 du Canada.

IC RF Statement:

When using the product, maintain a distance of 20cm from the body to ensure compliance with RF exposure requirements.

