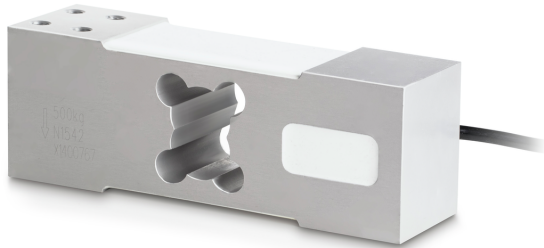


# KERN CP 150-3P8

Single-point load cell made of aluminium

# KERN



## Category

Brand	Sauter
Product category	Measuring cell
Product group	Load cell
Product family	CP P8

## Measuring System

Weighing capacity [Max]	150 kg
Load cell connection	6-wire
Load cell OIML class	C3
Load cell - Resolution (verifiable)	3000 e
Temperature coefficient - zero signal	$\leq \pm 0.0175 \%FS/10\text{ }^{\circ}C$
Creep error (30 minutes)	$\leq \pm 0.0167\%FS$
Safe overload	120%
Ultimate overload	150%
Zero balance	$\leq \pm 2.0\%FS$
Maximum platform size	600×600 mm
Temperature coefficient - characteristic value	$\leq \pm 0.020\%FS/10\text{ }^{\circ}C$
Load cell - characteristic value - nominal	2 mV/V
Load cell - characteristic value - variance	0,2 mV/V
Load cell - Y-value	10000
Load cell - Combined error	0,02%
Measuring applications	mass
Load cell - Input resistance - nominal	409 $\Omega$
Load cell - Output resistance - nominal	350 $\Omega$
Load cell - Isolation resistance - [Min]	5000 M $\Omega$
Load cell - Recommended excitation voltage [Min]	5 V

Load cell - Recommended excitation voltage [Max] 12 V

Load cell - Input resistance - variance 6  $\Omega$

Load cell - Output resistance - variance 3  $\Omega$

Directions of force compression

## Approval

CE mark ✓

## Construction

Design	Singlepoint load cell
Material	aluminium
Cable length	3 m
Mounting - force application	4 × threaded hole M8
Mounting - force dissipation	4 × threaded hole M8

## Functions

IP protection - complete device IP65

## Environmental conditions

Use temperature [Min]	-10 $^{\circ}C$
Use temperature [Max]	40 $^{\circ}C$
Ambient temperature [Min]	-35 $^{\circ}C$
Ambient temperature [Max]	65 $^{\circ}C$

## Packing & Shipping

Readability force [d] (N)	1 d
Dimensions packaging (W×D×H)	180×110×75 mm
Net weight	1,7 kg
Shipping method	Parcel service
Net weight approx.	1,8 kg
Gross weight approx.	1,8 kg
Shipping weight	1,75 kg

## Pictograms

### STANDARD

