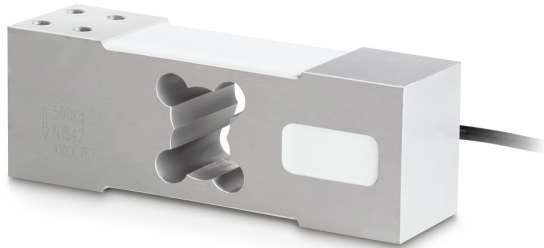


KERN CP 250-3P8

Single-point load cell made of aluminium

KERN



Load cell - Recommended excitation voltage [Max] 12 V

Load cell - Input resistance - variance 6 Ω

Load cell - Output resistance - variance 3 Ω

Directions of force compression

Approval

CE mark ✓

Construction

Design Singlepoint load cell

Material aluminium

Cable length 3 m

Mounting - force application 4 × threaded hole M8

Mounting - force dissipation 4 × threaded hole M8

Functions

IP protection - complete device IP65

Environmental conditions

Use temperature [Min] -10 °C

Use temperature [Max] 40 °C

Ambient temperature [Min] -35 °C

Ambient temperature [Max] 65 °C

Packing & Shipping

Readability force [d] (N) 1 d

Dimensions packaging (W×D×H) 180×110×75 mm

Net weight 1,7 kg

Shipping method Parcel service

Net weight approx. 1,8 kg

Gross weight approx. 1,8 kg

Shipping weight 1,75 kg

Pictograms

STANDARD



Category

Brand	Sauter
Product category	Measuring cell
Product group	Load cell
Product family	CP P8

Measuring System

Weighing capacity [Max]	250 kg
Load cell connection	6-wire
Load cell OIML class	C3
Load cell - Resolution (verifiable)	3000 e
Temperature coefficient - zero signal	$\leq \pm 0.0175 \%FS/10\text{ }^{\circ}C$
Creep error (30 minutes)	$\leq \pm 0.0167\%FS$
Safe overload	120%
Ultimate overload	150%
Zero balance	$\leq \pm 2.0\%FS$
Maximum platform size	600×600 mm
Temperature coefficient - characteristic value	$\leq \pm 0.020\%FS/10\text{ }^{\circ}C$
Load cell - characteristic value - nominal	2 mV/V
Load cell - characteristic value - variance	0,2 mV/V
Load cell - Y-value	10000
Load cell - Combined error	0,02%
Measuring applications	mass
Load cell - Input resistance - nominal	409 Ω
Load cell - Output resistance - nominal	350 Ω
Load cell - Isolation resistance - [Min]	5000 M Ω
Load cell - Recommended excitation voltage [Min]	5 V