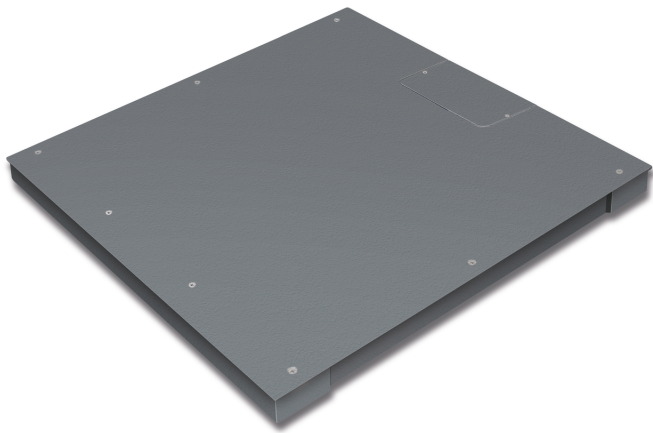


KERN KFP 3000V20NM

Weighing bridge made from steel, also with weighing plate screwed on from the top



Functions

IP protection - load cell	IP67
---------------------------	------

Environmental conditions

Ambient temperature [Min]	-10 °C
Ambient temperature [Max]	40 °C

Packing & Shipping

Readability force [d] (N)	2 d
Dimensions packaging (W×D×H)	1550×1300×260 mm
Net weight	135 kg
Shipping method	Freight
Net weight approx.	135 kg
Gross weight approx.	190 kg
Shipping weight	188 kg

Services (optional)

Article number for conformity assessment	965-232
Article number for DAkkS calibration	963-132

Pictograms

STANDARD



FACTORY



Category

Brand	KERN
Product category	Component
Product group	Weighing bridge
Product family	KFP-V20-IP67

Measuring System

Weighing capacity [Max]	3000 kg
Readability [d]	1 kg
Minimum weight [Min]	20 kg
Loadcell type	nickel plated steel IP67 silicone-coated + glued on plate
Load cell connection	6-wire

Approval

Accuracy classe	III
Verification scale interval [e]	1 kg
Conformity assessment possible ex works	✓

Construction

Dimensions weighing platform (W×D×H)	1500×1250×90 mm
Material weighing plate	steel, lacquered
Material platform	steel, varnished
Dimensions weighing surface (W×D)	1500×1250 mm
Cable length	5 m
Allowed cable length display device [Max]	20 m
Material load cell(s)	aluminium
Load cells - number	4
Levelling feet adjustable	✓