

EU-4307 V2

Quick Installation Guide

07-2021 / v1.0

Edimax Technology Co., Ltd.

No. 278, Xinhu 1st Rd., Neihu Dist., Taipei City, Taiwan

Email: support@edimax.com.tw

Edimax Technology Europe B.V.

Fijenhof 2, 5652 AE Eindhoven, The Netherlands

Email: support@edimax.nl

Edimax Computer Company

530 Technology Drive Suite 100, Irvine, CA 92618, USA

Email: support@edimax.us

Contents

I. Product Information & Safety Information	1
I-1. Package Contents	2
I-2. System Requirement	2
I-3. Hardware Interface	3
I-4. LED Status.....	4
II. Hardware Installation	5
III. Driver Installation	6
III-1. Windows.....	6
III-2. MAC OS.....	9
IV. Uninstall A Driver	13
IV-1. Windows.....	13
IV-2. MAC OS.....	16

I. Product Information & Safety Information

The plugable EU-4307 V2 U 2.5Gbps USB Type C Ethernet Adapter is the best ideal for users looking to move beyond Gigabit Ethernet speeds.

With this 2.5 Gigabit Ethernet adapter, you can leverage existing Ethernet cables to improve the performance of your local network, compared to traditional Gigabit Ethernet.

EU-4307 V2 instantly adds network connectivity to a computer with USB-C for extremely fast and secure file transfers or streaming downloads.

You can find all supporting documents from the link below or via QR Code:

<https://www.edimax.com/download>

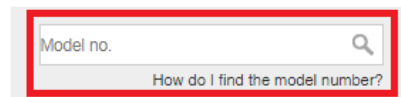


(Once you've visited the Edimax official website, please enter model no. "EU-4307 V2" into the search box to search for your product.)

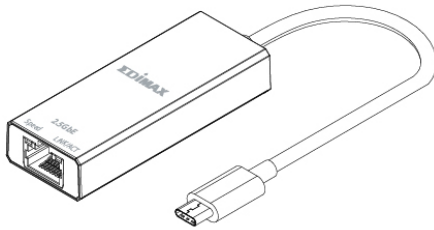
Download

To select your product and find related download materials, enter the model number into the search box on the right side or follow the simple steps below:

*Feel free to contact us anytime if you need help or if you can't find your product.

A screenshot of a search box on a website. The search box is rectangular with a light gray background and a thin border. Inside the box, the text "Model no." is visible on the left, and a magnifying glass icon is on the right. Below the search box, the text "How do I find the model number?" is displayed in a smaller font. The entire search box area is highlighted with a red border.

I-1. Package Contents



EU-4307 V2 2.5GbE Adapter



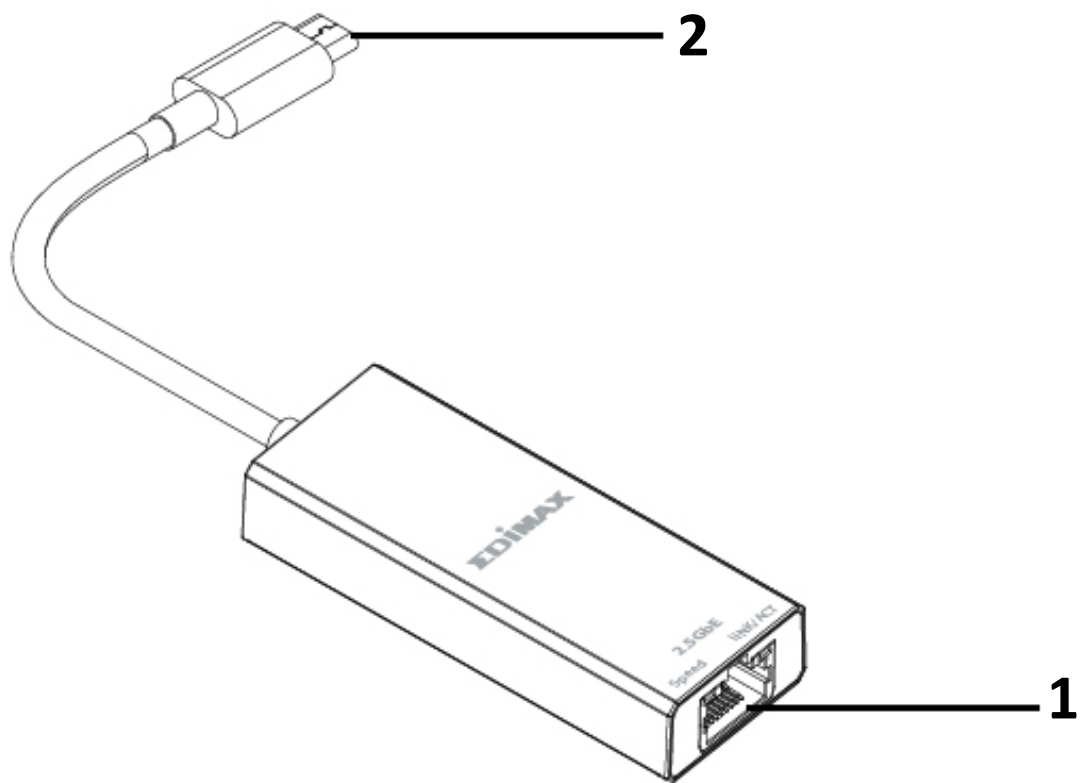
Quick Installation Guide

I-2. System Requirement

- Intel Pentium III 1GHz (or above)
- 256MB RAM / 100MB Hard Disk Space (at least)
- USB-C Port
- Windows 7/8.1/10
- Mac OS 10.12/10.13/10.14/10.15

***Additional version information will be announced on the EDIMAX website.**

I-3. Hardware Interface



No.	Description
1	2.5GbE RJ45 LAN Port
2	USB 3.1 Type C

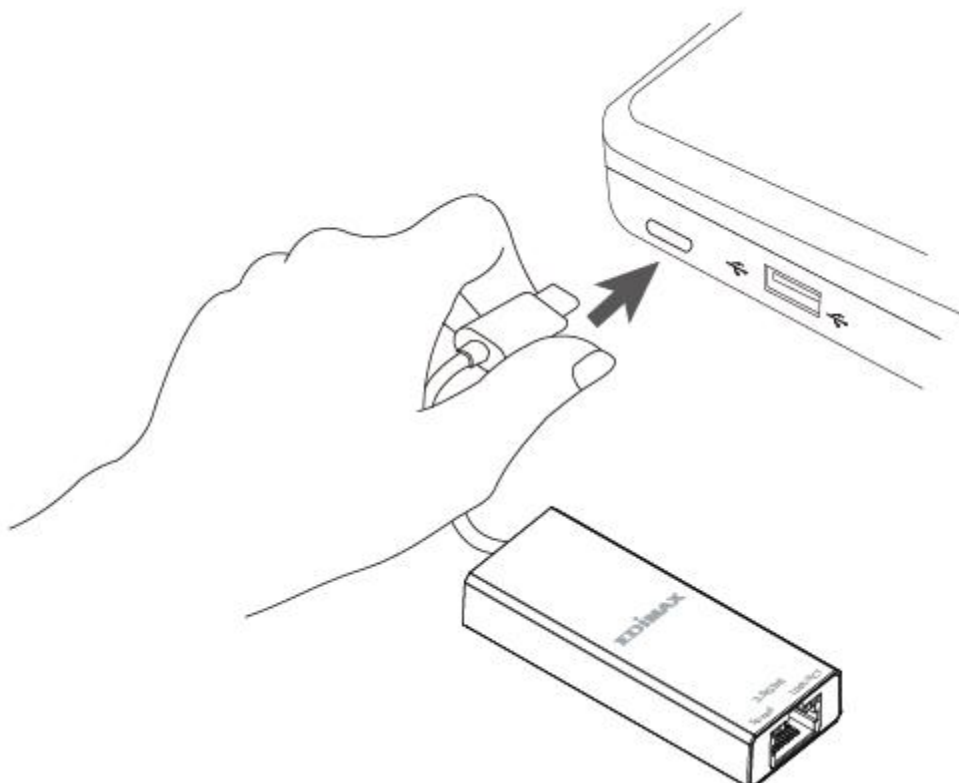
I-4. LED Status

Function	Status	Description
RJ45 Left LED (Speed)	On (Green)	Link at 2.5Gbps
	On (Amber)	Link at 10M/100M/1000Mbps
	Off	No traffic
RJ45 Right LED (LINK/ACT)	On (Green)	No traffic
	Blinking (Green)	Link at 10M/100M/1000Mbps/2.5Gbps and sending data

II. Hardware Installation

Please follow the steps below to install your Wi-Fi USB adapter,

1. Turn on your PC.
2. Insert the Ethernet Adapter into an available USB type C port of your computer.



Never use force to insert the Ethernet adapter.

3. Please download the driver from <https://www.edimax.com/download> to your computer.

III. Driver Installation

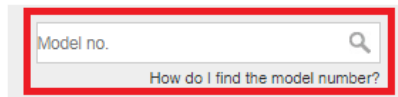
Please follow the steps below to install the Windows and MAC driver,


1. Go to Edimax website (<https://www.edimax.com/download>).
2. Enter model no. "EU-4307 V2" into the search box to search for your product, and Go to Download, and download the driver.

Download

To select your product and find related download materials, enter the model number into the search box on the right side or follow the simple steps below:

*Feel free to contact us anytime if you need help or if you can't find your product.

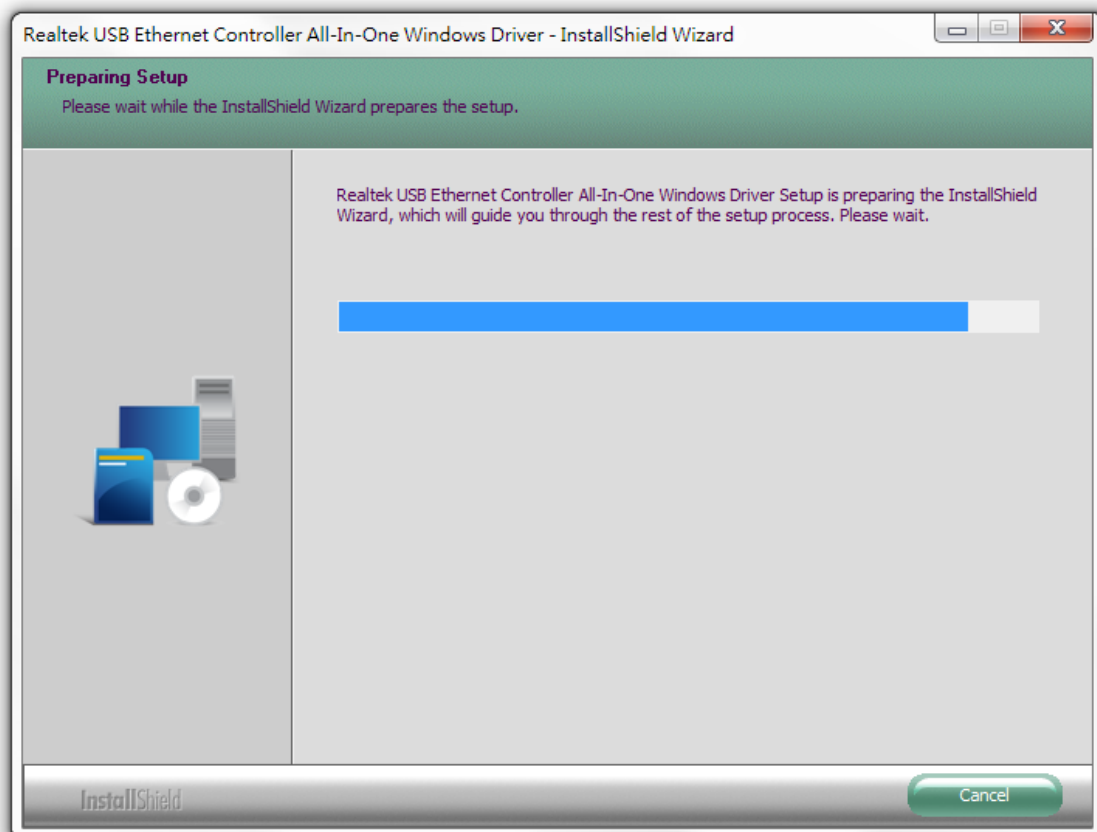


Model no. 

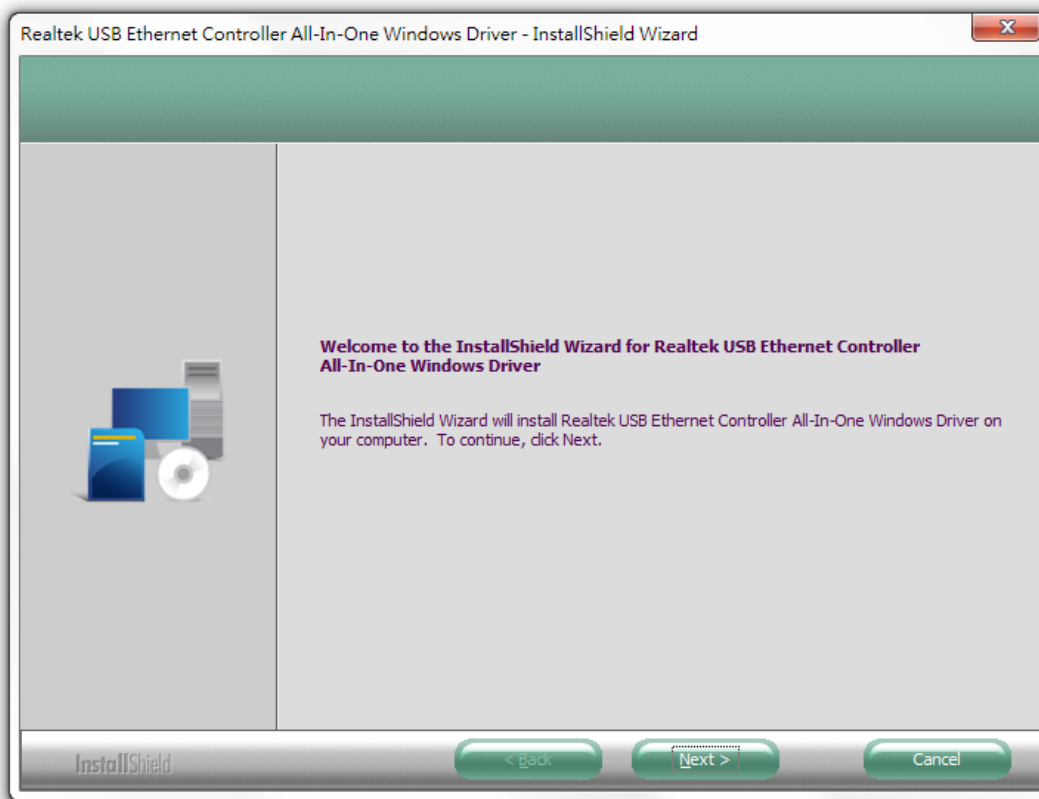
[How do I find the model number?](#)

III-1. Windows

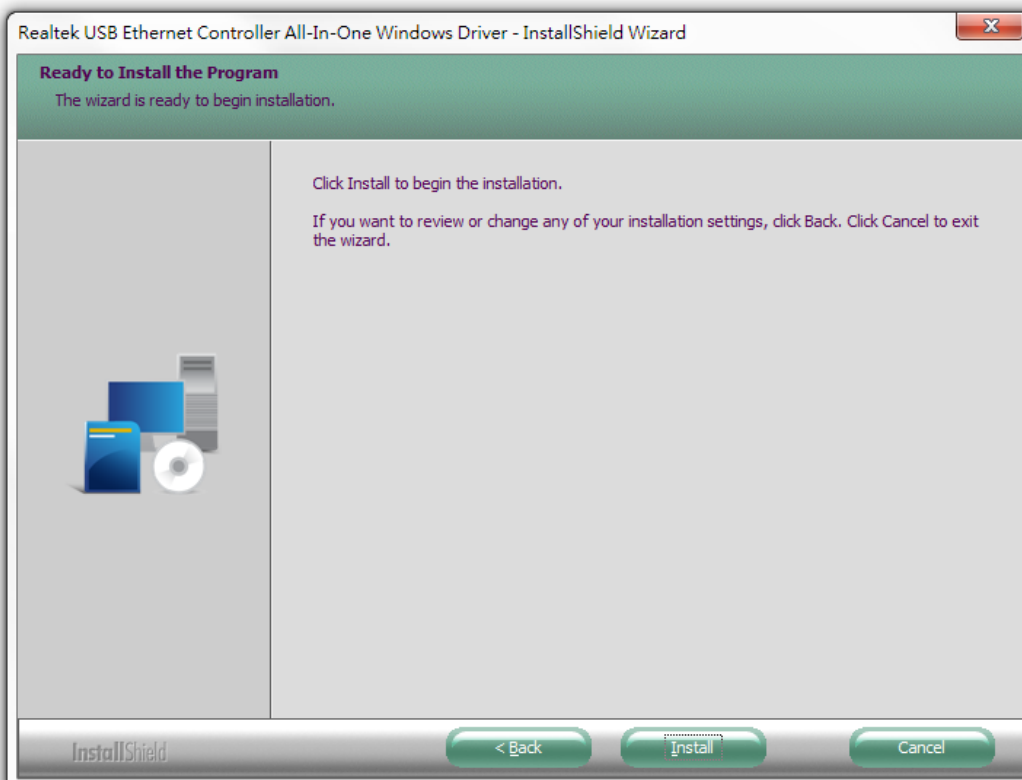
1. Open the folder and double click on the driver setup.exe to install the driver.

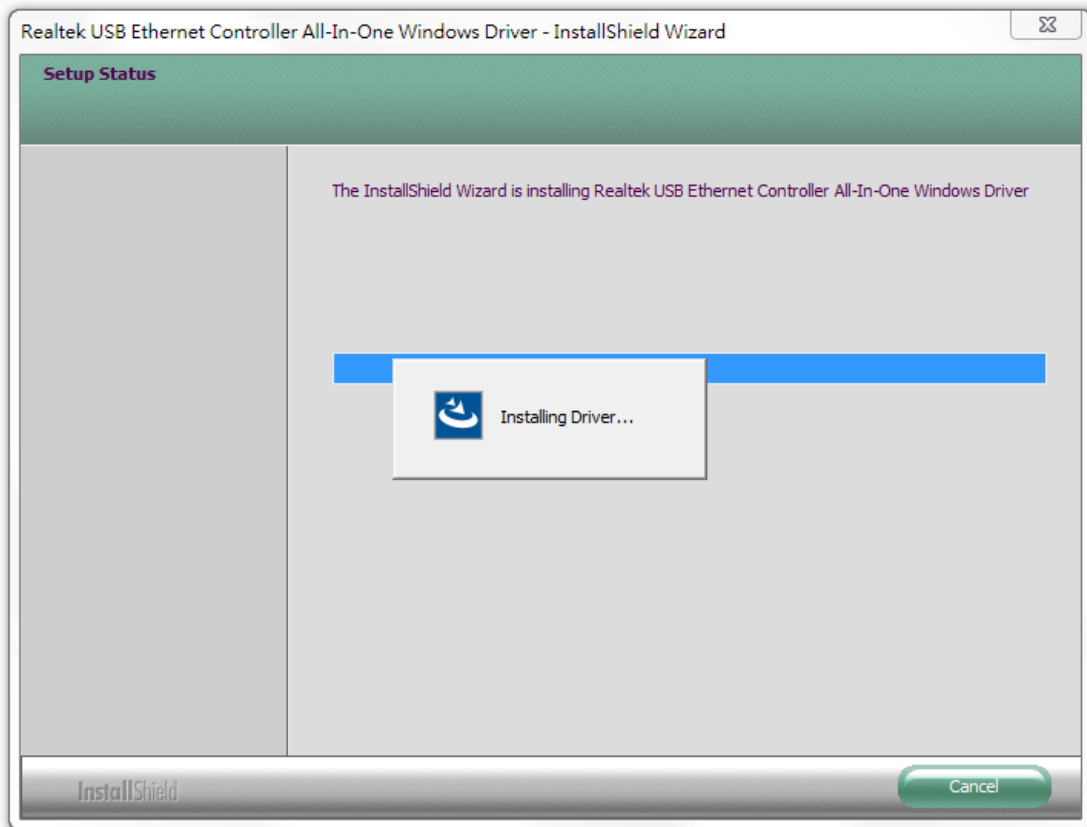


2. Click “Next” to continue and follow the instructions on-screen until installation is complete.

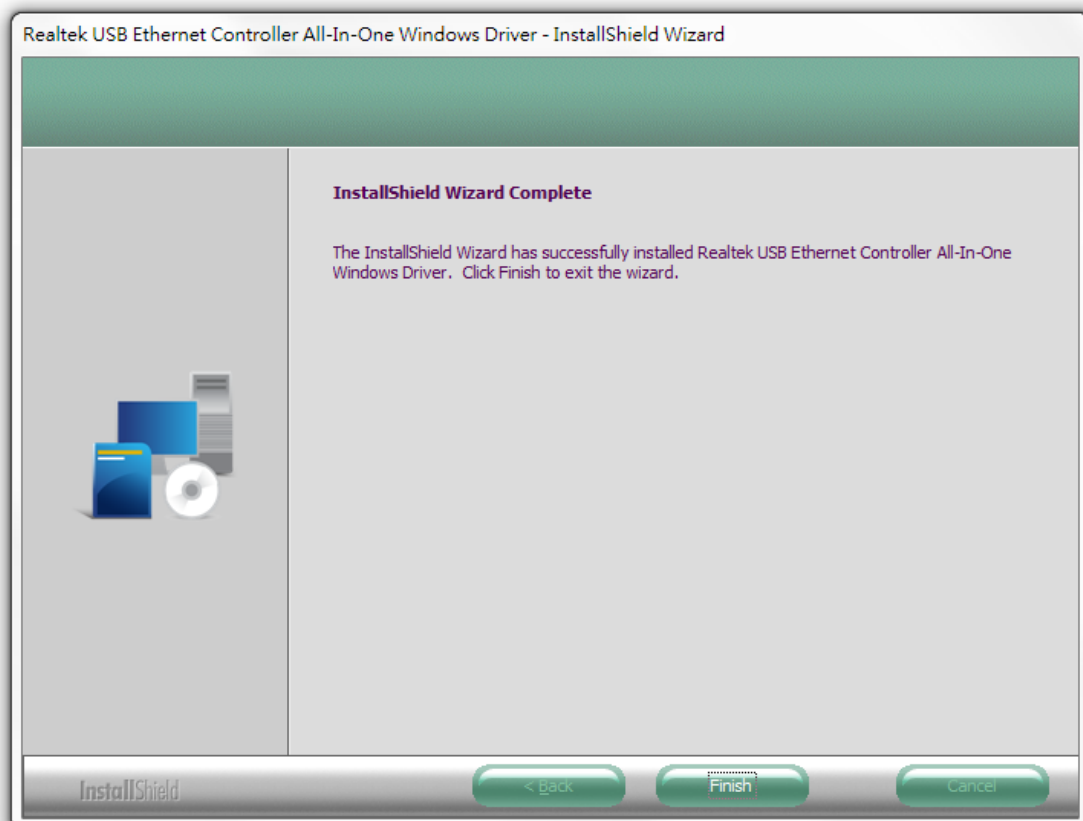


3. Click “Install” button to start the installation.




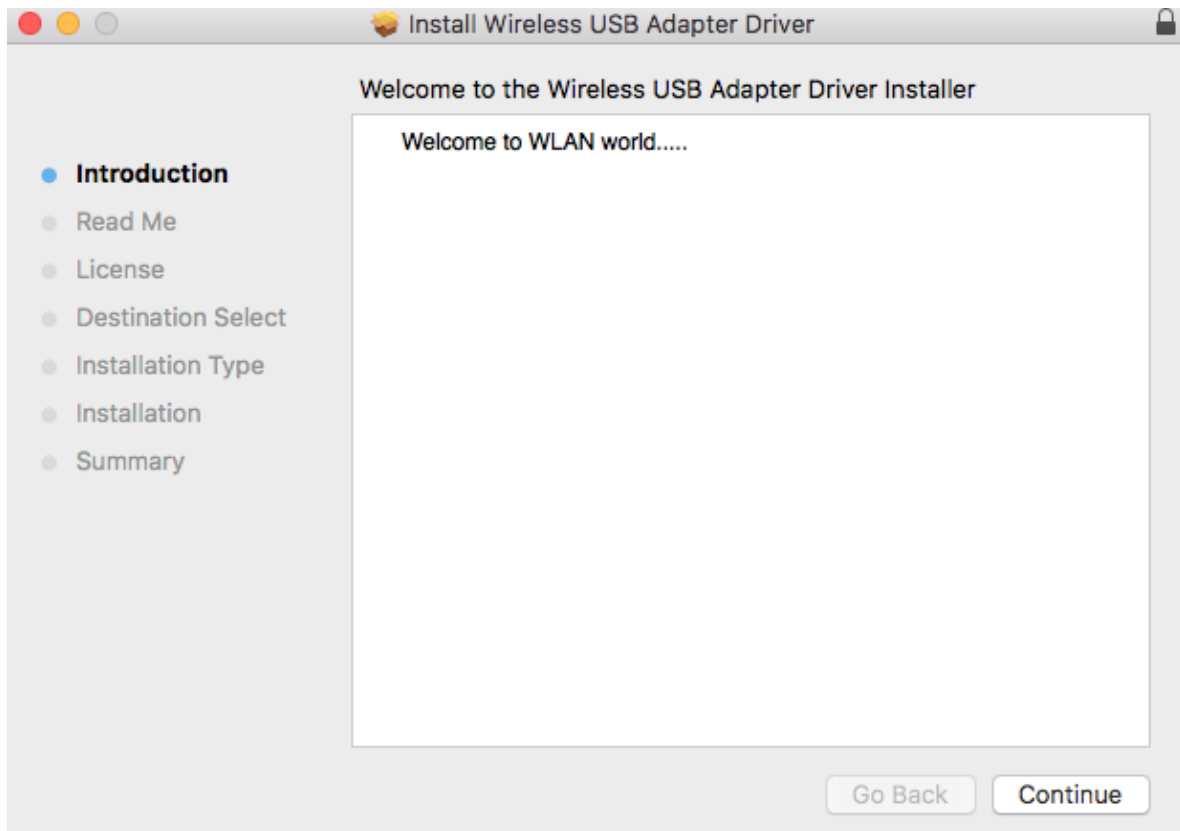


4. Select "Finish" to exit the wizard.

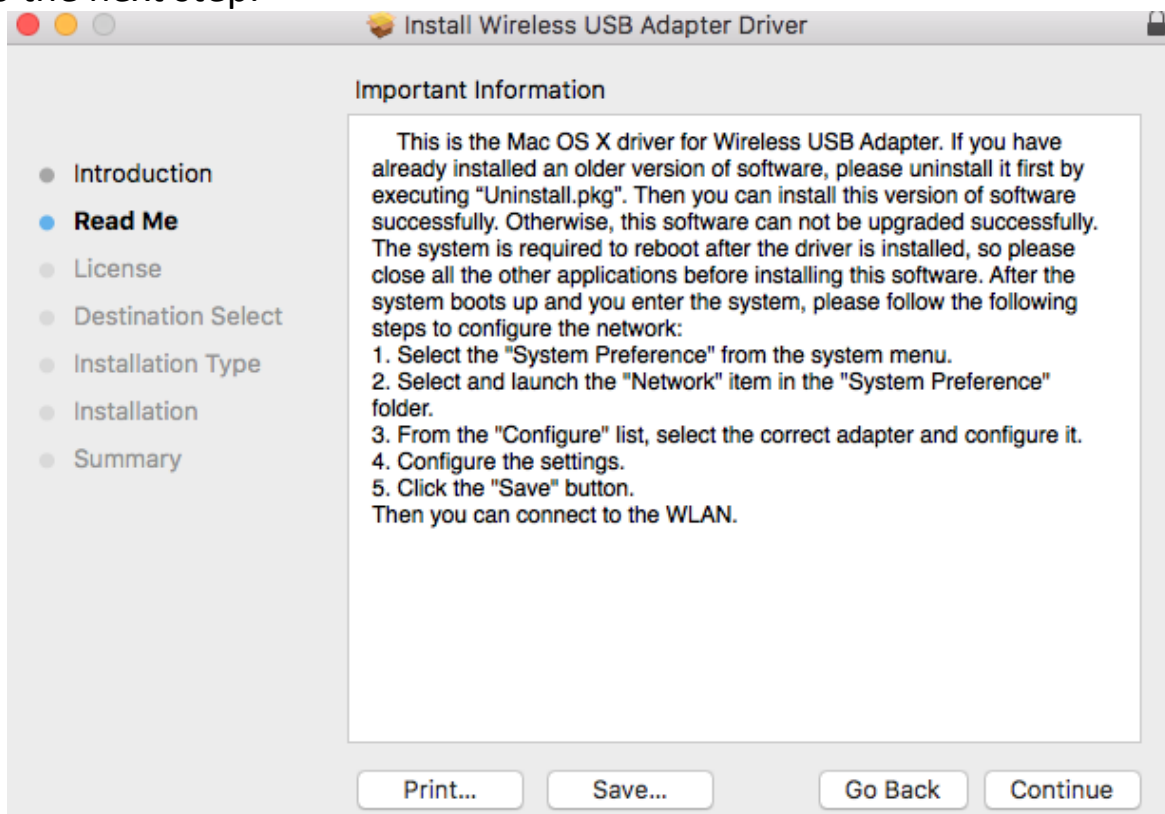


III-2. MAC OS

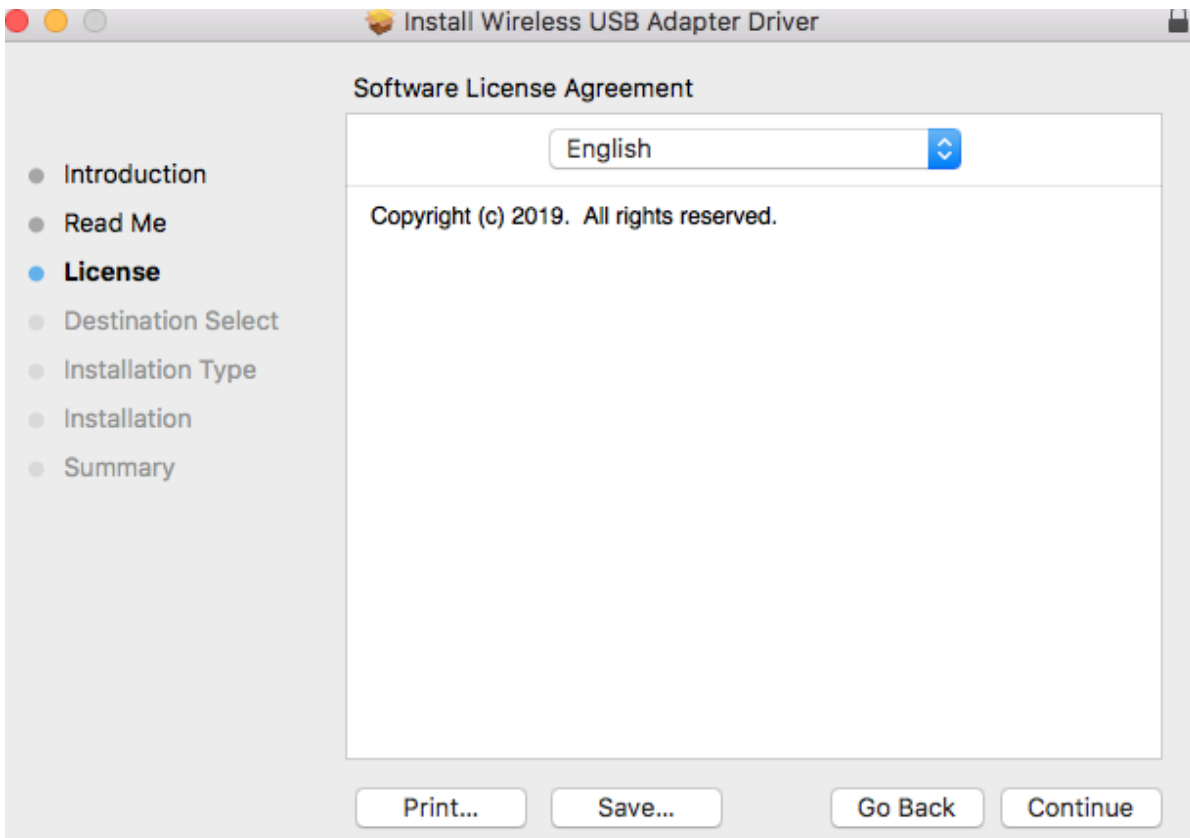
1. Double click the “Installer.pkg”  file to open the driver installation wizard.
2. Click “Continue” to proceed to the next step.



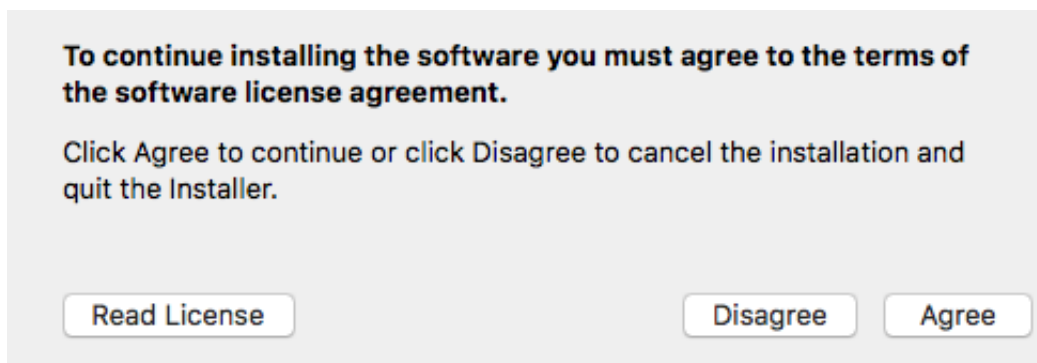
3. Please read the important information carefully. Click “Continue” proceed to the next step.



4. Select a language (the default language is English) and click “Continue” to install the driver.

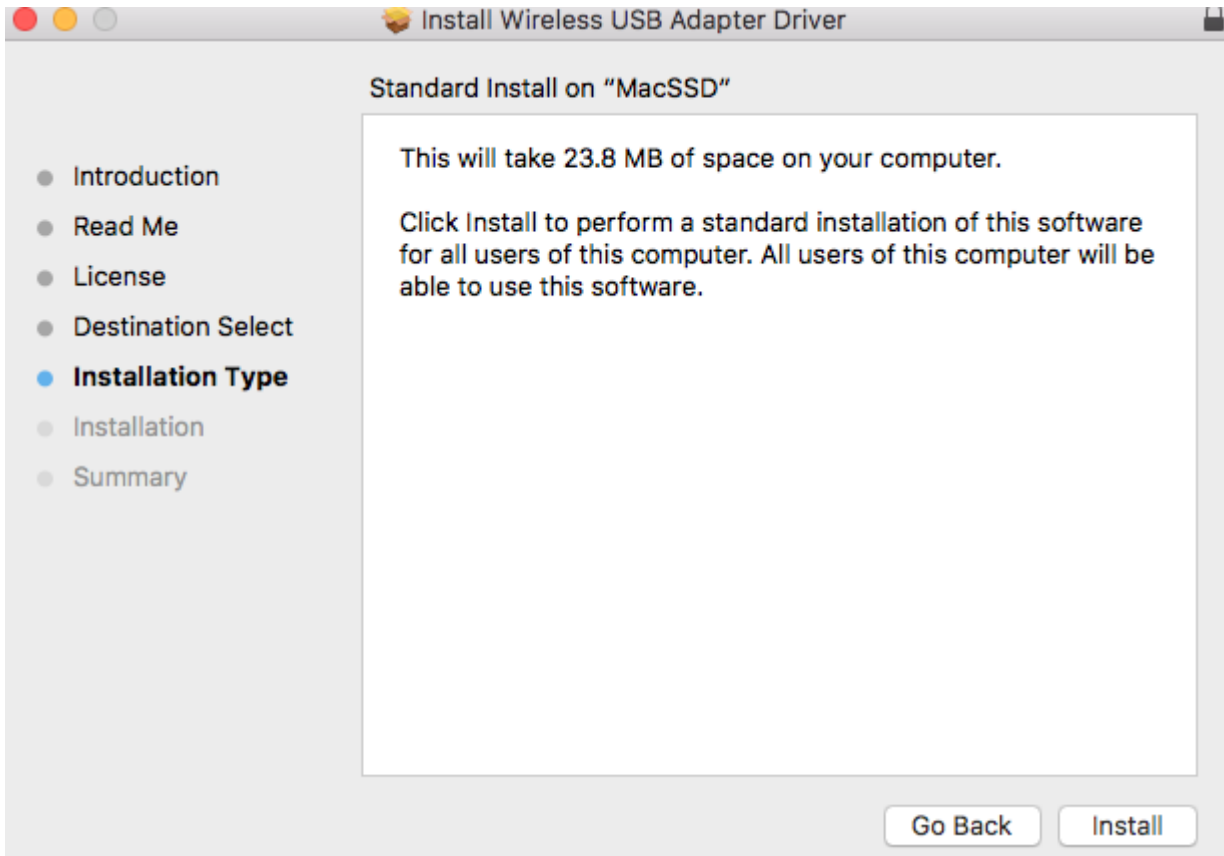


5. Click “Read License” and then click “Agree” to confirm you agree to the terms.



NOTE: You must agree to the terms to continue installing the software.

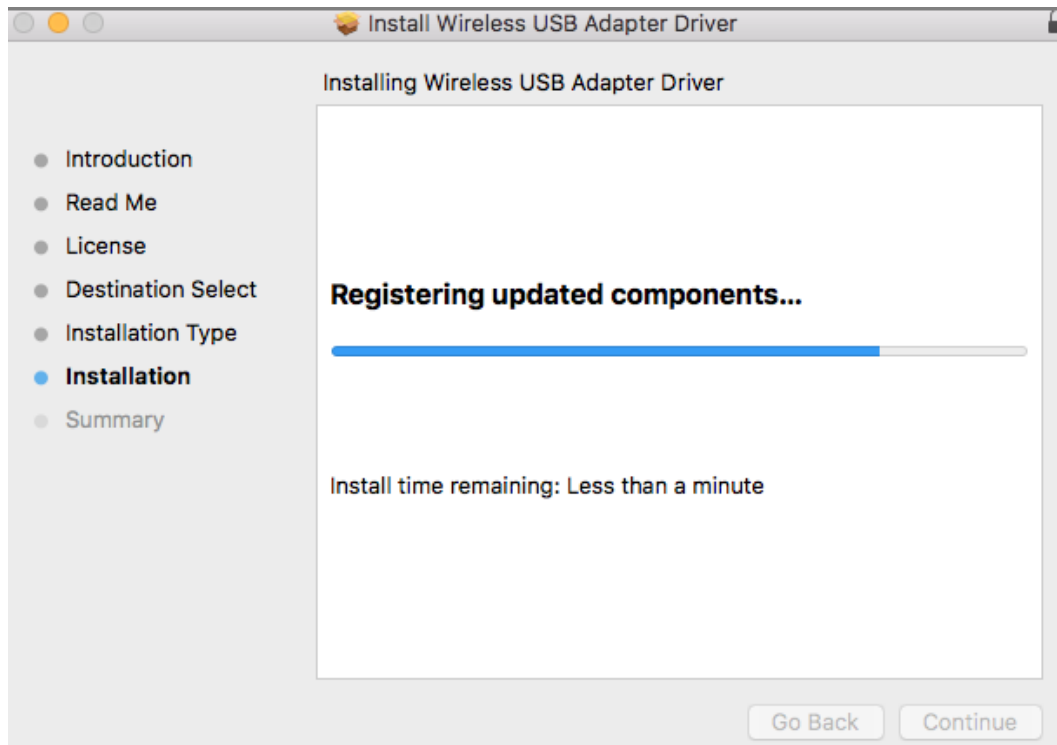
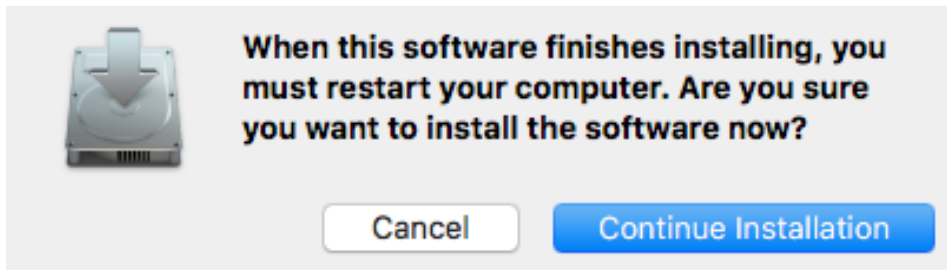
6. Click “Install” to install the driver.



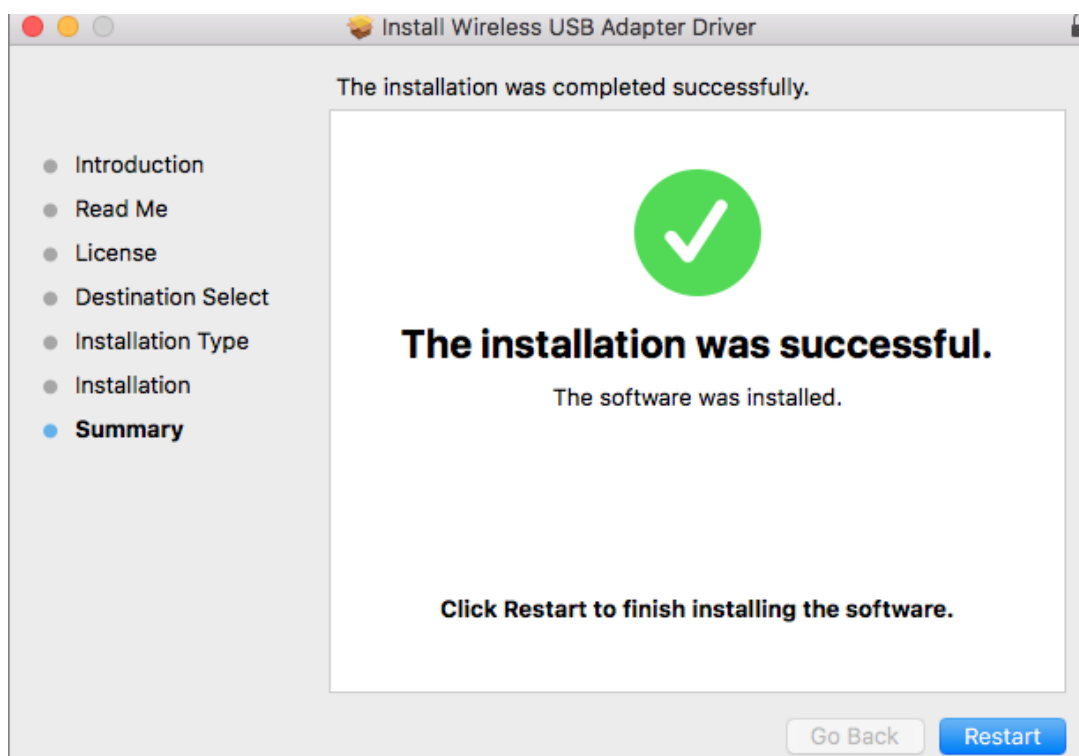
7. You may be prompted to enter your system/administrative password before the installation can begin. Enter your password and click “Install Software”.



8. Click “Continue Installation” to proceed the next step.



9. When the installation is complete, you will see the following screen informing you that “The installation was successful”. Click “Restart” to restart your computer.

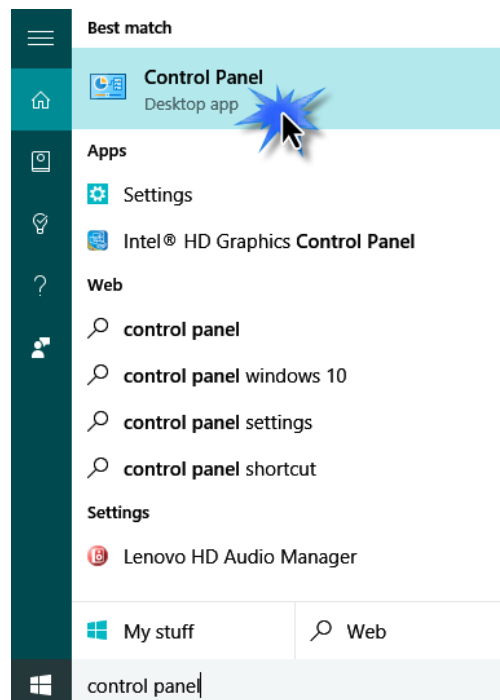


IV. Uninstall A Driver

Please follow the steps below to uninstall a driver for your USB adapter,

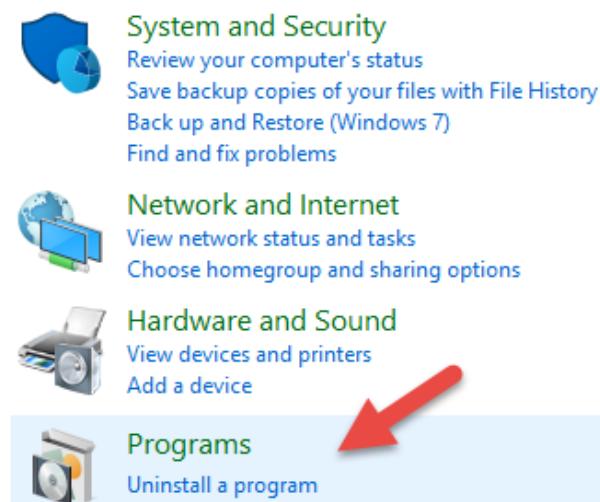
IV-1. Windows

1. Open Control Panel using the Start menu or Search function.



2. Select Uninstall a program under the Programs category.

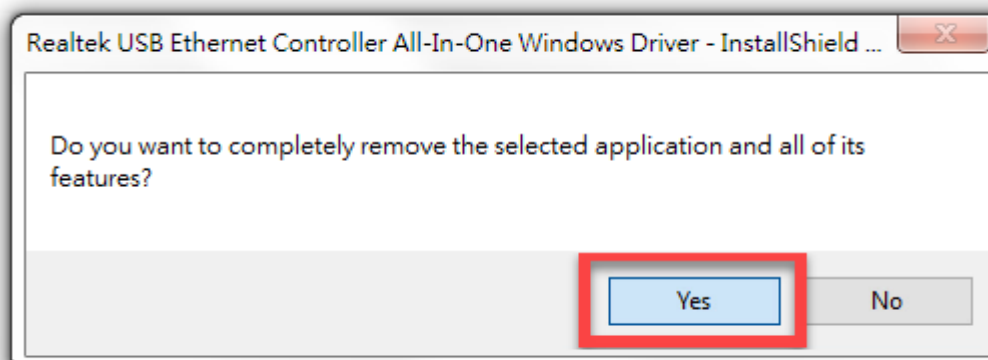
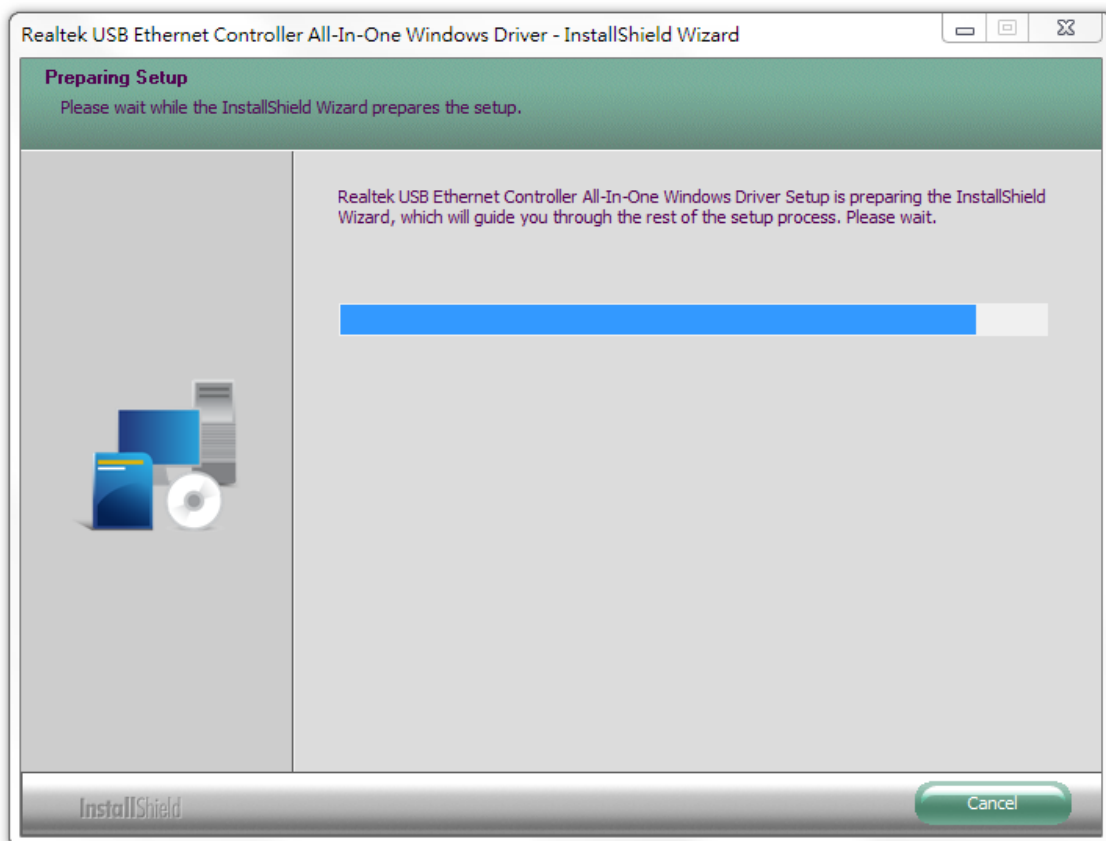
Adjust your computer's settings



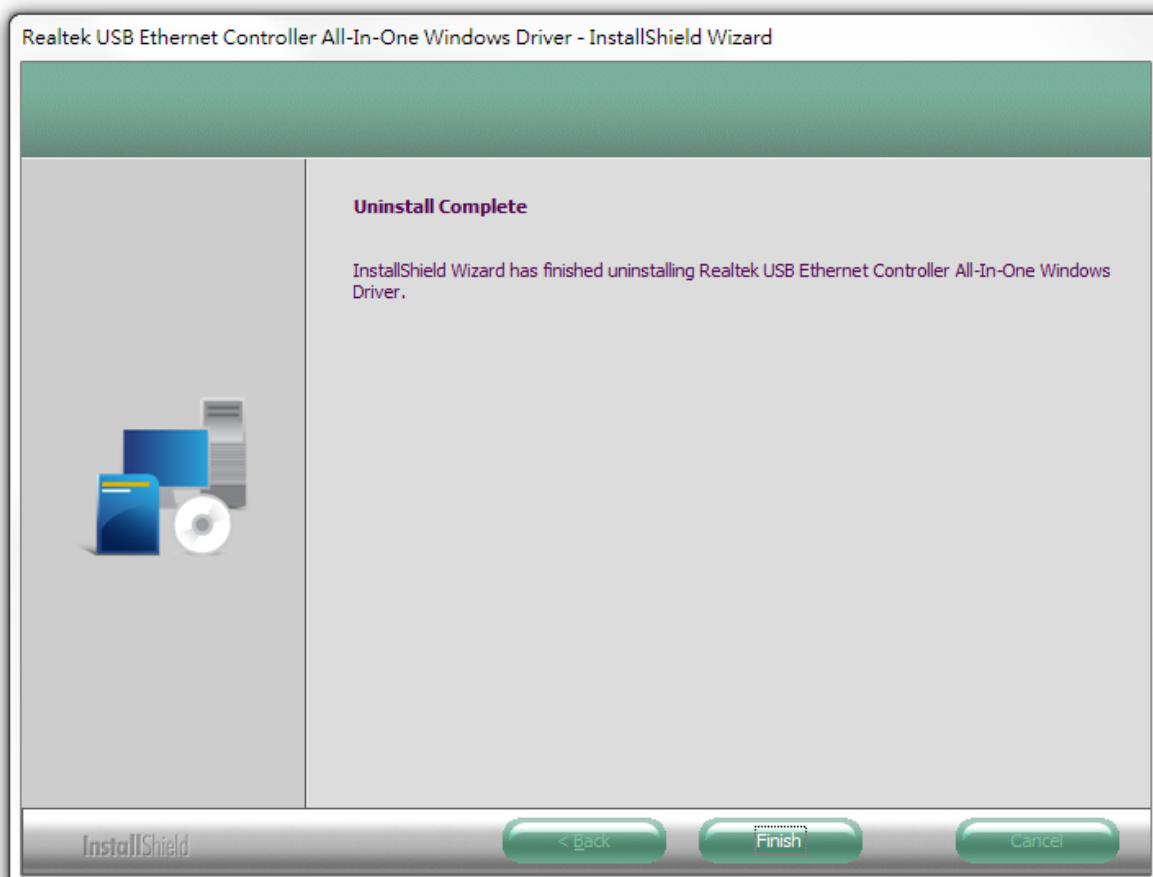
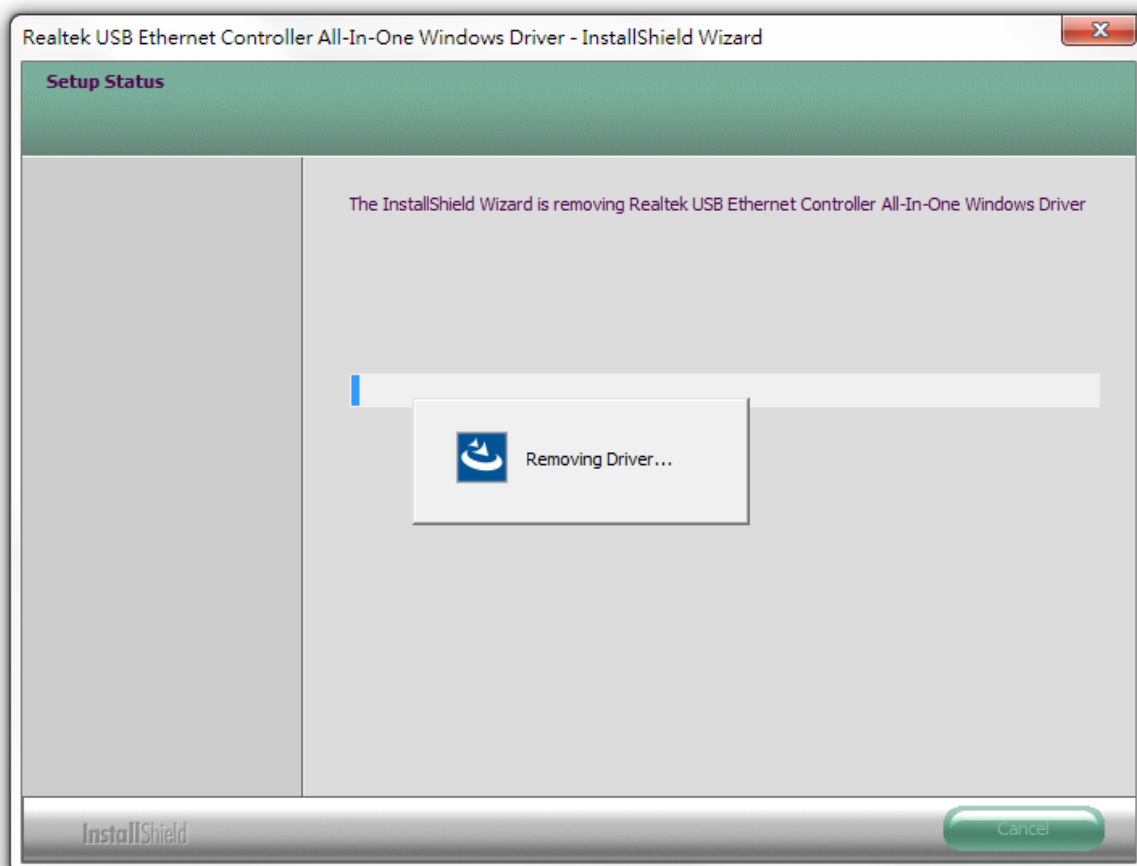
3. Select EW-4307 V2 (or similar) and click Uninstall.

Organize				
Name	Publisher	Installed On	Size	Version
 Realtek USB Ethernet Controller All-In-One Windows Driver	Edimax Technology Co., Ltd.	11/9/2020		1.00.0218.1


4. Click Yes to continue.



5. Click Finish to complete the uninstalling.



IV-2. MAC OS

Double click the “Uninstall.pkg”  Uninstall.pkg file and follow the on-screen instructions.

COPYRIGHT

Copyright © Edimax Technology Co., Ltd. all rights reserved. No part of this publication may be reproduced, transmitted, transcribed, stored in a retrieval system, or translated into any language or computer language, in any form or by any means, electronic, mechanical, magnetic, optical, chemical, manual or otherwise, without the prior written permission from Edimax Technology Co., Ltd.

Edimax Technology Co., Ltd. makes no representations or warranties, either expressed or implied, with respect to the contents hereof and specifically disclaims any warranties, merchantability, or fitness for any particular purpose. Any software described in this manual is sold or licensed as is. Should the programs prove defective following their purchase, the buyer (and not this company, its distributor, or its dealer) assumes the entire cost of all necessary servicing, repair, and any incidental or consequential damages resulting from any defect in the software. Edimax Technology Co., Ltd. reserves the right to revise this publication and to make changes from time to time in the contents hereof without the obligation to notify any person of such revision or changes.

The product you have purchased and the setup screen may appear slightly different from those shown in this QIG. The software and specifications are subject to change without notice. Please visit our website www.edimax.com for updates. All brand and product names mentioned in this manual are trademarks and/or registered trademarks of their respective holders.

Federal Communication Commission Interference Statement

This equipment has been tested and found to comply with the limits for a Class B digital device, pursuant to Part 15 of FCC Rules. These limits are designed to provide reasonable protection against harmful interference in a residential installation. This equipment generates, uses, and can radiate radio frequency energy and, if not installed and used in accordance with the instructions, may cause harmful interference to radio communications. However, there is no guarantee that interference will not occur in a particular installation. If this equipment does cause harmful interference to radio or television reception, which can be determined by turning the equipment off and on, the user is encouraged to try to correct the interference by one or more of the following measures:

1. Reorient or relocate the receiving antenna.
2. Increase the separation between the equipment and receiver.
3. Connect the equipment into an outlet on a circuit different from that to which the receiver is connected.
4. Consult the dealer or an experienced radio technician for help.

FCC Caution

This device and its antenna must not be co-located or operating in conjunction with any other antenna or transmitter. This device complies with Part 15 of the FCC Rules. Operation is subject to the following two conditions: (1) this device may not cause harmful interference, and (2) this device must accept any interference received, including interference that may cause undesired operation. Any changes or modifications not expressly approved by the party responsible for compliance could void the authority to operate equipment.

Federal Communications Commission (FCC) Radiation Exposure Statement

This equipment complies with FCC radiation exposure set forth for an uncontrolled environment. In order to avoid the possibility of exceeding the FCC radio frequency exposure limits, human proximity to the antenna shall not be less than 2.5cm (1 inch) during normal operation.

Federal Communications Commission (FCC) RF Exposure Requirements

This EUT is compliance with SAR for general population/uncontrolled exposure limits in ANSI/IEEE C95.1-1999 and had been tested in accordance with the measurement methods and procedures specified in OET Bulletin 65 Supplement C. The equipment version marketed in US is restricted to usage of the channels 1-11 only. This equipment is restricted to *indoor* use when operated in the 5.15 to 5.25 GHz frequency range.

R&TTE Compliance Statement

This equipment complies with all the requirements of DIRECTIVE 1999/5/EC OF THE EUROPEAN PARLIAMENT AND THE COUNCIL of March 9, 1999 on radio equipment and telecommunication terminal equipment and the mutual recognition of their conformity (R&TTE). The R&TTE Directive repeals and replaces in the directive 98/13/EEC (Telecommunications Terminal Equipment and Satellite Earth Station Equipment) As of April 8, 2000.

Safety

This equipment is designed with the utmost care for the safety of those who install and use it. However, special attention must be paid to the dangers of electric shock and static electricity when working with electrical equipment. All guidelines of this and of the computer manufacture must therefore be allowed at all times to ensure the safe use of the equipment.

EU Countries Intended for Use

The ETSI version of this device is intended for home and office use in Austria, Belgium, Bulgaria, Cyprus, Czech, Denmark, Estonia, Finland, France, Germany, Greece, Hungary, Ireland, Italy, Latvia, Lithuania, Luxembourg, Malta, Netherlands, Poland, Portugal, Romania, Slovakia, Slovenia, Spain, Sweden, Turkey, and United Kingdom. The ETSI version of this device is also authorized for use in EFTA member states: Iceland, Liechtenstein, Norway, and Switzerland.

EU Countries Not Intended for Use

None

EU Declaration of Conformity

- English:** This equipment is in compliance with the essential requirements and other relevant provisions of Directive 2014/30/EU, 2014/35/EU.
- Français:** Cet équipement est conforme aux exigences essentielles et autres dispositions de la directive 2014/30/EU, 2014/35/EU.
- Čeština:** Toto zařízení je v souladu se základními požadavky a ostatními příslušnými ustanoveními směrnic 2014/30/EU, 2014/35/EU.
- Polski:** Urządzenie jest zgodne z ogólnymi wymaganiami oraz szczególnymi warunkami określonymi Dyrektywą UE 2014/30/EU, 2014/35/EU.
- Română:** Acest echipament este în conformitate cu cerințele esențiale și alte prevederi relevante ale Directivei 2014/30/EU, 2014/35/EU.
- Русский:** Это оборудование соответствует основным требованиям и положениям Директивы 2014/30/EU, 2014/35/EU.
- Magyar:** Ez a berendezés megfelel az alapvető követelményeknek és más vonatkozó irányelveknek (2014/30/EU, 2014/35/EU).
- Türkçe:** Bu cihaz 2014/30/EU, 2014/35/EU. direktifleri zorunlu istekler ve diğer hükümlerle ile uyumludur.
- Українська:** Обладнання відповідає вимогам і умовам директиви 2014/30/EU, 2014/35/EU.
- Slovenčina:** Toto zariadenie spĺňa základné požiadavky a ďalšie príslušné ustanovenia smerníc 2014/30/EU, 2014/35/EU.
- Deutsch:** Dieses Gerät erfüllt die Voraussetzungen gemäß den Richtlinien 2014/30/EU, 2014/35/EU.
- Español:** El presente equipo cumple los requisitos esenciales de la Directiva 2014/30/EU, 2014/35/EU.
- Italiano:** Questo apparecchio è conforme ai requisiti essenziali e alle altre disposizioni applicabili della Direttiva 2014/30/EU, 2014/35/EU.
- Nederlands:** Dit apparaat voldoet aan de essentiële eisen en andere van toepassing zijnde bepalingen van richtlijn 2014/30/EU, 2014/35/EU.
- Português:** Este equipamento cumpre os requisitos essenciais da Directiva 2014/30/EU, 2014/35/EU.
- Norsk:** Dette utstyret er i samsvar med de viktigste kravene og andre relevante regler i Direktiv 2014/30/EU, 2014/35/EU.
- Svenska:** Denna utrustning är i överensstämmelse med de väsentliga kraven och övriga relevanta bestämmelser i direktiv 2014/30/EU, 2014/35/EU.
- Dansk:** Dette udstyr er i overensstemmelse med de væsentligste krav og andre relevante forordninger i direktiv 2014/30/EU, 2014/35/EU.
- suomen kieli:** Tämä laite täyttää direktiivien 2014/30/EU, 2014/35/EU. oleelliset vaatimukset ja muut asiaankuuluvat määräykset.

FOR USE IN 



WEEE Directive & Product Disposal



At the end of its serviceable life, this product should not be treated as household or general waste. It should be handed over to the applicable collection point for the recycling of electrical and electronic equipment, or returned to the supplier for disposal.

Declaration of Conformity

We, Edimax Technology Co., Ltd., declare under our sole responsibility, that the equipment described below complies with the requirements of the European R&TTE directives.

Equipment: USB3.0 to 2.5 Giga ethernet Port NIC
Model No.: EU-4307 V2

The following European standards for essential requirements have been followed:

Directives 2014/30/EU

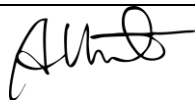
EN 55032:2015+A11:2020
EN IEC 61000-3-2:2019
EN 61000-3-3:2013+A1:2019
EN 55035:2017+A11:2020
EN 61000-4-2:2008
EN 61000-4-3:2006+AMD1:2017+AMD2:2010
EN 61000-4-4:2012
EN 61000-4-5:2014+AMD1:2017
EN 61000-4-6:2013
EN 61000-4-8:2009
EN 61000-4-11:2020

Edimax Technology Europe B.V.
Fijenhof 2,
5652 AE Eindhoven,
The Netherlands

Printed Name: David Huang
Title: Director
Edimax Technology Europe B.V.

a company of:
Edimax Technology Co., Ltd.
No. 278, Xinhua 1st Rd.,
Neihu Dist., Taipei City,
Taiwan



Date of Signature: July, 2021
Signature: 
Printed Name: Albert Chang
Title: Director
Edimax Technology Co., Ltd.

Declaration of Conformity

We, Edimax Technology Co., Ltd., declare under our sole responsibility, that the equipment described below complies with the requirements of the United Kingdom EMC and Safety directives.

Equipment: USB3.0 to 2.5 Giga ethernet Port NIC
Model No.: EU-4307 V2

The following European standards for essential requirements have been followed:

Electromagnetic Compatibility Regulations 2016 (S.I. 2016/1091)

EN 55032:2015+A11:2020
EN IEC 61000-3-2:2019
EN 61000-3-3:2013+A1:2019
EN 55035:2017+A11:2020
EN 61000-4-2:2008
EN 61000-4-3:2006+AMD1:2017+AMD2:2010
EN 61000-4-4:2012
EN 61000-4-5:2014+AMD1:2017
EN 61000-4-6:2013
EN 61000-4-8:2009
EN 61000-4-11:2020

Edimax Technology Europe B.V.
Fijenhof 2,
5652 AE Eindhoven,
The Netherlands

Printed Name: David Huang
Title: Director
Edimax Technology Europe B.V.

a company of:
Edimax Technology Co., Ltd.
No. 278, Xinhua 1st Rd.,
Neihu Dist., Taipei City,
Taiwan



Date of Signature: July, 2021

Signature: _____

A handwritten signature in black ink, appearing to read 'Albert Chang', written over a horizontal line.

Printed Name: Albert Chang

Title: Director

Edimax Technology Co., Ltd.