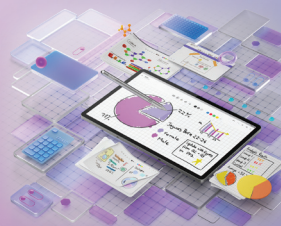


Lenovo Idea Tab Pro | Lenovo Idea Tab Pro Matte Edition

Smarter technology for all

Lenovo

Level Up Elevate your studies with next-gen solution.



WWW.LENOVO.COM

Lenovo Idea Tab Pro | Lenovo Idea Tab Pro Matte Edition

Smarter technology for all

Lenovo

Specifications

Design

Dimension



Weight

620 g (1.37 lbs)

Operating System at Launch

Launched with Android™ 14. (Expect Android™ 15 & 16 upgrades and 4 years security updates.)

Performance

Processor

MediaTek Dimensity 8300 (Octa-Core; 1 x A715 @ 3.35 GHz + 3 x A715 @ 3.2 GHz + 4 x A510 @ 2.2 GHz. ARM G615 MC5 1400 MHz)

Audio

4 x JBL® Speakers Tuned by Dolby Atmos®; Dual Microphones



Memory (LPDDR5X + UFS 3.1)

RAM + ROM : 8 GB + 128 GB / 8 GB + 256 GB
Card Slot : MicroSD, exFAT Up to 1 TB

Battery²

Type : Li-ion Polymer
Capacity : 10200 mAh (Typical), Support of 45W Quick Charge
Streaming : Up to 11 Hours of YouTube Streaming



¹ Depending on many factors such as the processing capability of peripheral devices, file attributes, and other factors related to system configuration and operating environments, the actual transfer rate using the various USB connectors on this device will vary and is typically slower than the data rates as defined by the respective USB specifications: 5 Gbit/s for USB 3.2 Gen 1; 10 Gbit/s for USB 3.2 Gen 2 & 20 Gbit/s for USB 3.2 Gen2x2. ¹ All battery life claims are approximate and based on internal testing under optimal laboratory and network conditions. Actual battery performance will vary and depend on numerous factors including product configuration and usage, software, operating conditions, wireless functionality, power management settings, screen brightness and other factors. The maximum capacity of the battery will naturally decrease with time and usage. ² Actual application availability varies by country.

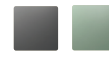
Display

Size : 12.7"
Screen : LCD
Screen (Matte Edition) : Paper-like Anti-glare Display
Resolution : 2944 x 1840
PPI : 273
Aspect Ratio : 16:10
Refresh Rate : 144 Hz
Brightness : Up to 400 nits
Screen-to-Body Ratio : ≥87%



Colors

Luna Grey | Seafoam Green



Card Slots

Type : Single Card Slot
Slots : MicroSD Card



Connectivity

Wireless Connectivity

WLAN : 802.11 a/b/g/n/ac/ax, Dual Band
WiFi 2.4 GHz and 5 GHz,
WiFi 6E Certified



Bluetooth® : 5.3
GPS : Yes
GLONASS : Yes
Galileo : Yes

Accessories



Integrated Camera

Front
8MP FF (f/2.0)
Rear
13MP AF (f/2.2)



Sensors

Accelerometer Sensor, Hall Sensor, Gyroscope, RGB Sensor, Coulomb Counter, Fingerprint Sensor on the Power Key

Login Security

Fingerprint : Yes Face Unlock : Yes

Buttons and Ports

USB-C™ 3.2 Gen 1¹
MicroSD Card Slot
3-point Pogo Pin for Keyboard Connection

Software

Preloaded Software³

- Google Kids Space
- Google Gemini App
- Circle to Search with Google
- Entertainment Space
- Play
- Files
- Google TV
- YouTube Kids
- Google Chrome
- Gmail
- Maps
- Drive
- Duo
- Photos
- Message
- Podcasts
- Docs
- Sheets
- Lenovo Smart Connect
- WPS
- Nebo
- MyScript Calculator
- Musical Recorder
- Lenovo Vantage

Certifications

Idea Tab Pro



Idea Tab Pro Matte Edition



What's in the Box*

- Lenovo Idea Tab Pro / Lenovo Idea Tab Pro Matte Edition
- MicroSD Tray Pin
- USB Type-C™ 2.0 Charging Cable
- Quick Start Guide & Safety, Warranty

* Actual in-box items may vary depending on markets, resellers, configurations, and more.

Recommended Lenovo Services*

Lenovo Accidental Damage Protection One

Avoid the hassles of unexpected damage & repair costs. With coverage for drops, spills, electric surges, and broken LCD screens, accidental damage protection makes it easy to repair your Tablets, permitting a single repair during the coverage period.

Lenovo Premium Care

Premium Care is a hassle-free solution for all your technical support needs. Upgrade your Lenovo Tablet's standard warranty to our

front-of-the-queue customer support service and get 24/7 real-person support via phone, chat, or email from experts who provide solutions on your first contact.

Lenovo Premium Care Plus

Enjoy extra care, comfort, and peace-of-mind with Lenovo Premium Care Plus – a comprehensive support solution with personalized hardware and software support from experts and accidental damage coverage, with you as our priority 24/7.

* Optional premium services and accessories may be sold separately. Availability varies depending on markets, resellers, configurations and more.



WWW.LENOVO.COM



Lenovo reserves the right to alter product offerings and specifications at any time, without notice. Lenovo makes every effort to ensure accuracy of all information but is not liable or responsible for any editorial, photographic or typographic errors. All images are for illustration purposes only. For full Lenovo product, service and warranty specifications visit www.lenovo.com. Lenovo makes no representations or warranties regarding third party products or services. **Trademarks:** The following are trademarks or registered trademarks of Lenovo: Lenovo, the Lenovo logo, Yoga, Google and Android are trademarks of Google LLC. Ultrabook, Celeron, Celeron Inside, Core Inside, Intel, Intel Logo, Intel Atom, Intel Atom Inside, Intel Core, Intel Inside, Intel Core, Intel Inside Logo, Intel vPro, Itanium, Itanium Inside, Pentium, Pentium Inside, vPro Inside, Xeon, Xeon Phi and Xeon Inside are trademarks of Intel Corporation in the U.S. and/or other countries. WiFi 6 is a trademark of WiFi Alliance. HDR10+ is a trademark of HDR10+ Technologies, LLC. MyScript and Nebo are trademarks of the company MyScript, registered in France, the United States of America and other countries. Other company, product and service names may be trademarks or service marks of others. Battery life (and recharge times) will vary based on many factors including system settings and usage. ©2024 Lenovo. All rights reserved.