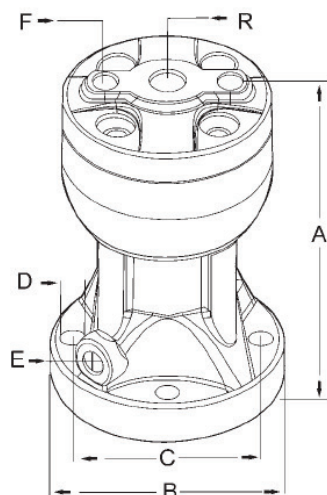


DATASHEET

Pneumatic Interval Knocker

Item No. 3437213

Item No. 3437214



Classification

Item no.	Type	Oil-free design	Suitable wall thickness mm	Operating temperature min./max. in °C	Operating pressure min./max. in bar
3437213	Interval knocker	Yes	2 - 25	+4/+60	3/7
3437214	Interval knocker	Yes	2 - 25	+4/+60	3/7

Performance

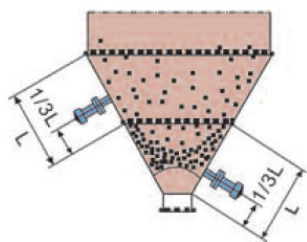
Item no.	Working pressure MPa	Impact frequency Impacts/min.	Air consumption L/impact	Impact energy N-m	Impact force kg-m/s ²
3437213	0.3 - 0.7	1 - 60	0.06 - 0.14	5.6 - 13.2	1.2 - 1.9
3437214	0.3 - 0.7	1 - 60	0.16 - 0.36	9.3 - 22.5	2.7 - 4.2

Dimensions and weight

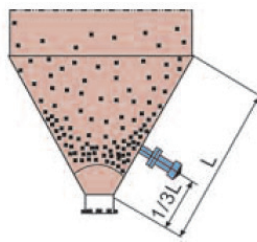
Item no.	A mm	B mm	C mm	D mm	E Thread	F Relay port thread	R Air inlet port thread	Weight kg
3437213	115	82	67	9	G1/8	G1/8	G1/4	1.3
3437214	155	98	77	11	G1/4	G1/8	G1/4	2.2



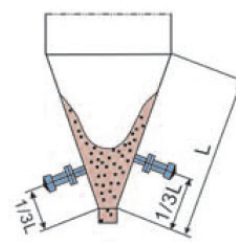
Installation



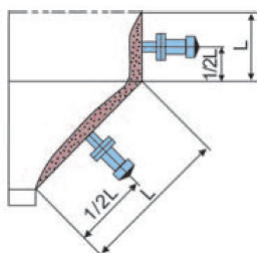
Large stock bin



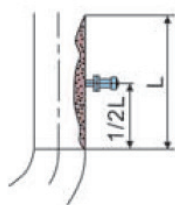
Small stock bin



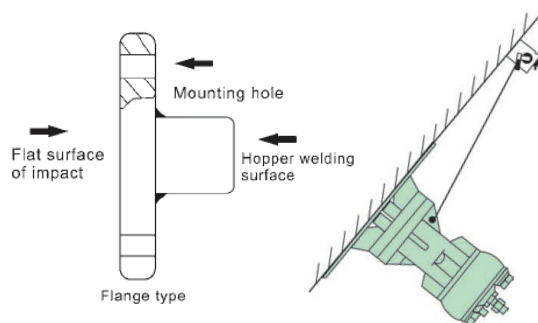
Narrow stock bin



Wall stock bin



Pipe cleaning



Safety requirements

- Wear personal protective equipment (PPE). Wear helmet, safety shoes, and safety belt before beginning installation.
- Disconnect the air system during installation to prevent accidental start-up and injury.
- Observe the accident prevention regulations of the Employer's Liability Insurance Association for Electrical Systems and Operating Materials.

Panel and hopper setup

- Ensure that no space exists between the plate and hopper.
- Reserve approximately 10 mm of exhaust port clearance to allow air discharge and prevent equipment overheating.

Container and body installation

- Use fall protection equipment and secure tools within the container body to prevent injuries and property damage from falls.
- Install a spring washer when using a screw bolt to fix the body with the flange.
- Tighten screws and inspect them regularly for proper retention.

Air system components

- Equip the system with an air filter when installing the air hose to prevent poor performance due to debris and particulate infiltration.
- Do not exceed the required impact force to prevent damage at the installation point.

Impact operation guidelines

- Ensure that the impact surface of the installed flange maintains solid contact.

