

IC-3140W

Quick Installation Guide

07-2014 / v1.0

Edimax Technology Co., Ltd.

No.3, Wu-Chuan 3rd Road, Wu-Gu, New Taipei City 24891, Taiwan

Email: support@edimax.com.tw

Edimax Technology Europe B.V.

Fijenhof 2, 5652 AE Eindhoven, The Netherlands

Email: support@edimax.nl

Edimax Computer Company

3350 Scott Blvd., Bldg.15 Santa Clara, CA 95054, USA

Live Tech Support: 1(800) 652-6776

Email: support@edimax.com



Copyright © Edimax Technology Co., Ltd. all rights reserved. No part of this publication may be reproduced, transmitted, transcribed, stored in a retrieval system, or translated into any language or computer language, in any form or by any means, electronic, mechanical, magnetic, optical, chemical, manual or otherwise, without the prior written permission from Edimax Technology Co., Ltd.

Edimax Technology Co., Ltd. makes no representations or warranties, either expressed or implied, with respect to the contents hereof and specifically disclaims any warranties, merchantability, or fitness for any particular purpose. Any software described in this manual is sold or licensed as is. Should the programs prove defective following their purchase, the buyer (and not this company, its distributor, or its dealer) assumes the entire cost of all necessary servicing, repair, and any incidental or consequential damages resulting from any defect in the software. Edimax Technology Co., Ltd. reserves the right to revise this publication and to make changes from time to time in the contents hereof without the obligation to notify any person of such revision or changes.

The product you have purchased and the setup screen may appear slightly different from those shown in this QIG. For more information about this product, please refer to the user manual on the CD-ROM. The software and specifications are subject to change without notice. Please visit our website www.edimax.com for updates. All brand and product names mentioned in this manual are trademarks and/or registered trademarks of their respective holders.

Edimax Technology Co., Ltd.

Add: No. 3, Wu-Chuan 3rd Rd., Wu-Ku Industrial Park, New Taipei City, Taiwan

Tel: +886-2-77396888

Email: sales@edimax.com.tw

Notice According to GNU General Public License Version 2

Certain Edimax products include software code developed by third parties, software code is subject to the GNU General Public License ("GPL") or GNU Lesser General Public License ("LGPL"). Please see the [GNU](http://www.gnu.org) (www.gnu.org) and [LPGL](http://www.gnu.org)(www.gnu.org) Websites to view the terms of each license.

The GPL Code and LGPL Code used in Edimax products are distributed without any warranty and are subject to the copyrights of their authors. For details, see the GPL Code and LGPL Code licenses. You can download the firmware-files at <http://www.edimax.com> under "Download" page.

I.	Información acerca del producto	4
I-1.	Contenido del paquete	4
I-2.	Panel frontal.....	4
I-3.	Panel trasero.....	5
I-4.	Estado del LED.....	5
I-4.	Etiqueta del producto	6
I-5.	Restablecer	6
II.	Instalación del dispositivo	8
II-1.	Conjunto de montaje	8
II-2.	Cámara	9
III.	Instalación de la cámara	10
III-1.	Aplicación EdiView	10
III-1-1.	Android	10
III-1-2.	iPhone	14
III-2.	WPS (configuración Wi-Fi protegida)	17
III-3.	Myedimax.com	18

I. Información acerca del producto

I-1. Contenido del paquete



IC-3140W



QIG



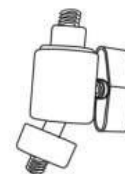
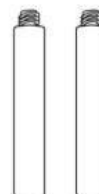
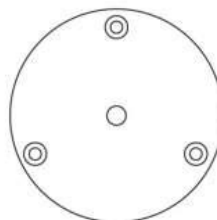
CD-ROM



Adaptador de corriente

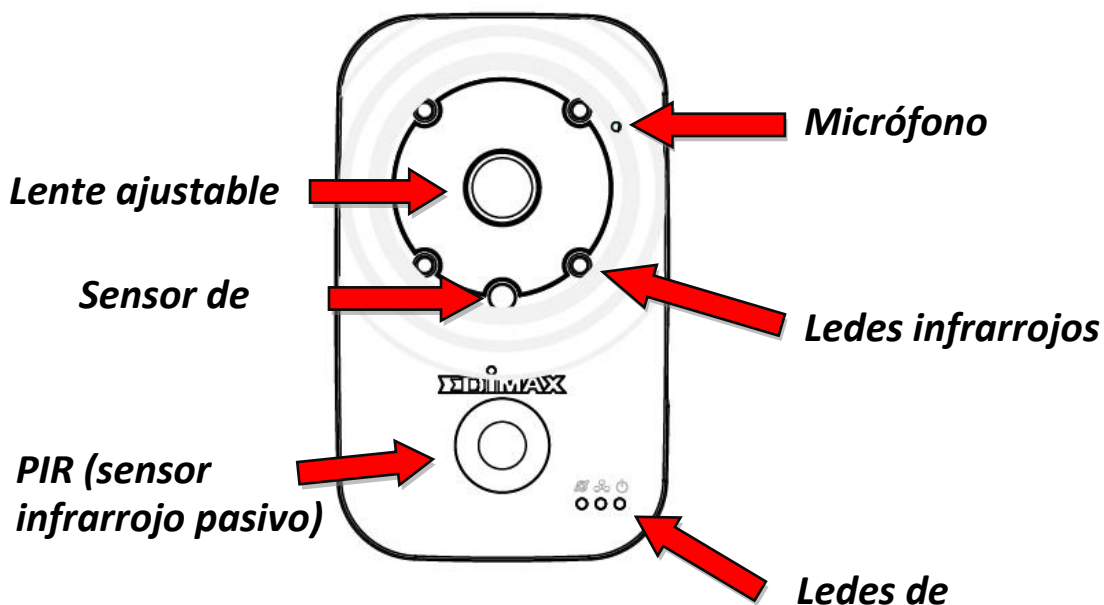


Cable Ethernet

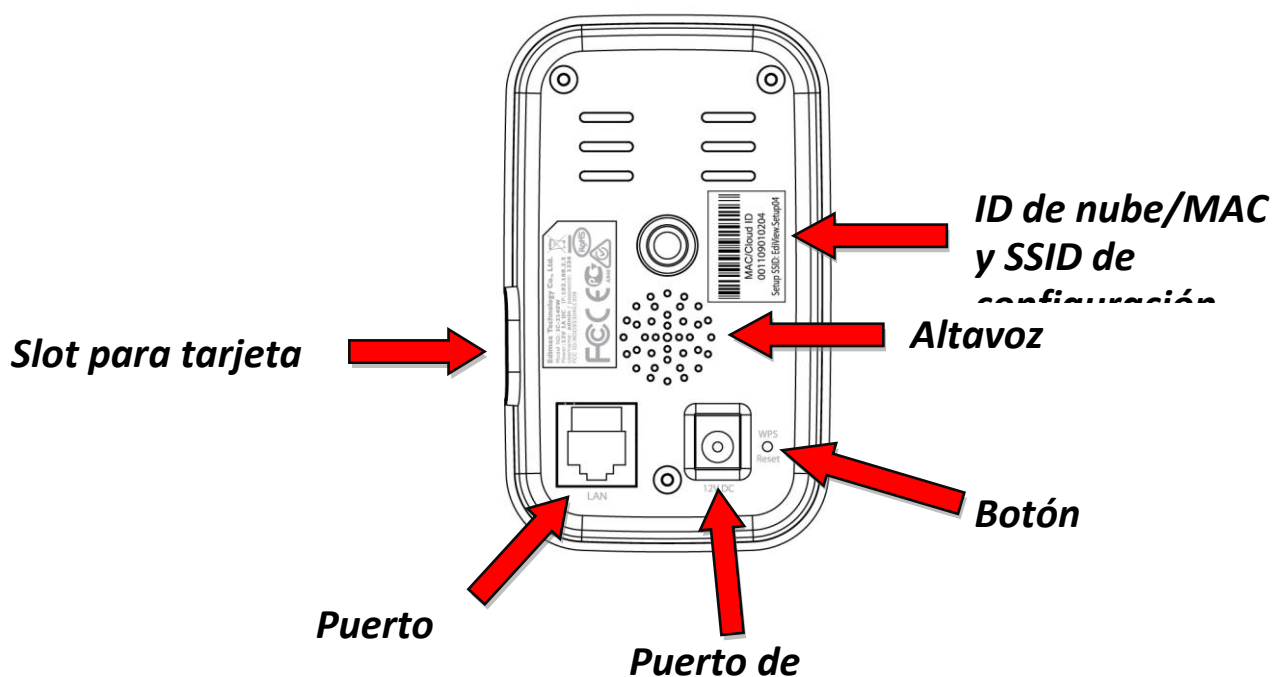


Kit de montaje

I-2. Panel frontal



I-3. Panel trasero




I-4. Estado del LED

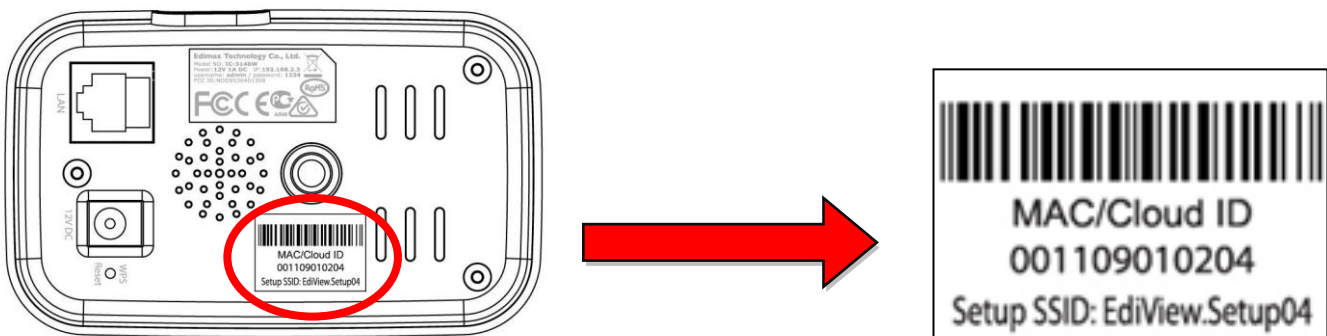
LED	Color del LED	Estado del LED	Descripción
Energía	Verde	Encendido	La cámara de red está encendida y conectada al servidor de red.
		Parpadeo rápido	La cámara de red se está reiniciando.
		Parpadeo lento (1 por segundo)	La cámara de red se está iniciando O no está conectada al servidor de red.
LAN	Verde	Encendido	La cámara de red está conectada a la red local.
		Parpadeo rápido	Actividad de la LAN (transmisión de datos).
		Parpadeo lento (1 por segundo)	La WPS está activada.
Internet	Naranja	Encendido	Conectado a Internet.
		Parpadeo lento (1 por segundo)	No conectado a Internet.

I-4. Etiqueta del producto

La etiqueta del producto situada en la parte trasera de la cámara muestra la dirección MAC, el ID de nube y el SSID de configuración de su cámara de red.

 **La dirección MAC y el ID de nube son los mismos para una fácil referencia.**


El ID de nube le permite ver una transmisión en directo de su cámara de red en modo remoto (desde cualquier conexión Internet) como se describe más adelante en **III-4. Myedimax.com**.

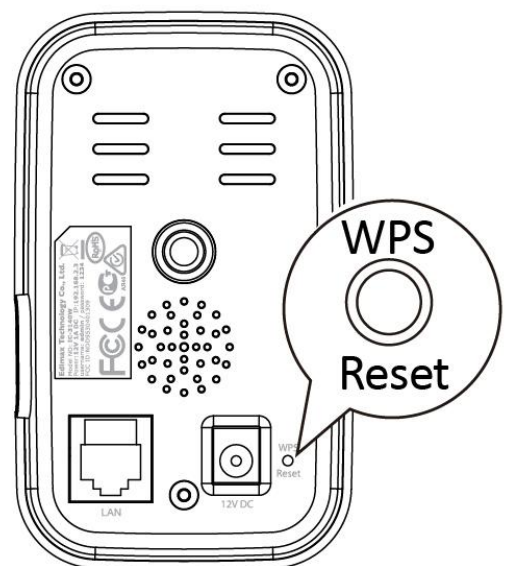


I-5. Restablecer

Si tiene problemas con su cámara de red, puede restablecerla a la configuración predeterminada de fábrica. De esta manera se restablecerán **todas** las configuraciones predeterminadas.

- 1.** Pulse y mantenga pulsado el botón WPS/Restaurar que se encuentra en el panel posterior durante por lo menos 10 segundos
- 2.** Suelte el botón cuando el LED **verde** de alimentación **parpadea velozmente**.
- 3.** Espere a que la cámara de red se reinicie. La cámara está lista cuando el LED **verde** de alimentación **parpadea lentamente**.

 **Después de la instalación, el LED verde de alimentación aparece encendido para indicar la correcta conexión al servidor**



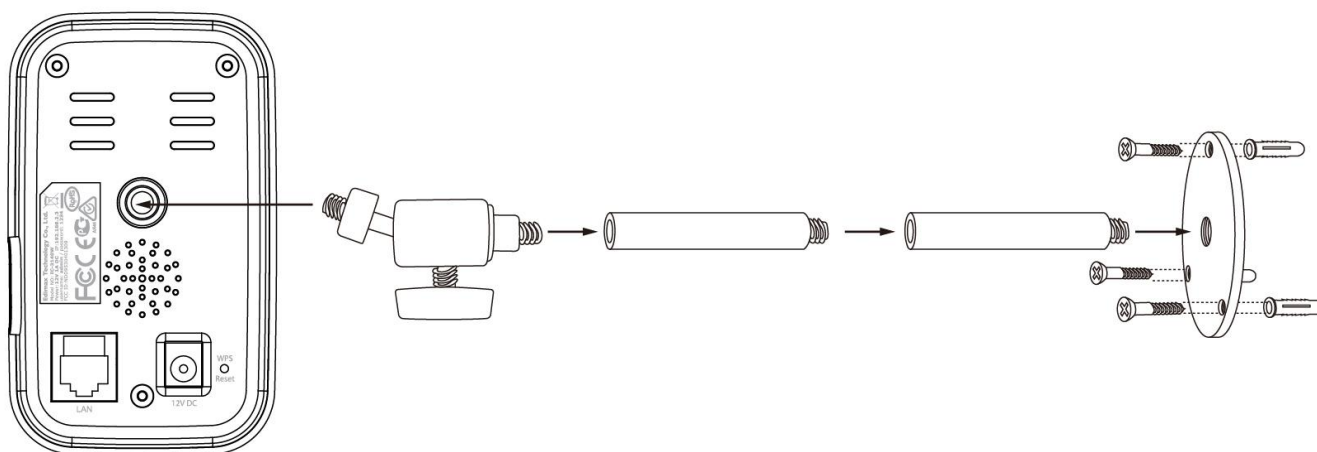
de nube.

II. Instalación del dispositivo

II-1. Conjunto de montaje

En el contenido del embalaje se incluye un pie para la cámara de red. El pie debe montarse.

1. Monte el pie de la cámara suministrado como se indica abajo. El pie de la cámara se sostiene por sí mismo o puede montarse también en una pared:



2. Sujete la cámara de red al pie suministrado usando el orificio de montaje de la parte posterior de la cámara.

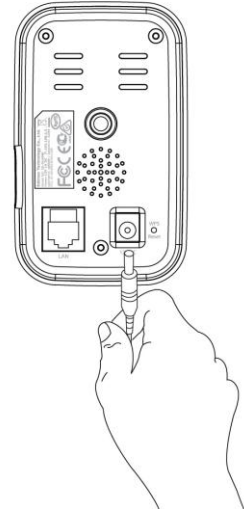


También puede montar la cámara de red en un trípode usando el orificio de montaje.

II-2. Cámara

Siga las instrucciones de abajo para asegurarse que su cámara esté correctamente conectada y lista para la instalación.

- 1.** Conecte el adaptador de corriente al puerto de alimentación de la cámara de red y a una fuente de suministro, como se muestra a la derecha.
- 2.** Espere un momento hasta que la cámara se encienda. La cámara producirá un sonido y el led **verde** de alimentación **parpadeará lentamente** cuando está lista. Consulte **III. Instalación de la cámara** para instalar la cámara de red usando la aplicación gratuita para smartphone EdiView.



Para instalar la cámara usando un cable Ethernet en vez del Wi-Fi, consulte el manual de usuario.

III. Instalación de la cámara

Su cámara de red puede estar preparada y funcionar en unos pocos minutos. Siga las instrucciones de los capítulos siguientes para instalar la cámara usando la aplicación gratuita EdiView para Android o iPhone.

Después puede usar la interfaz de gestión basada en web para mirar la transmisión en directo y configurar la cámara si fuese necesario (consulte el manual de usuario para más información).

También puede ver las imágenes en directo de la cámara desde cualquier conexión Internet y navegador web usando el ID de nube (consulte **III-3.**).

También puede seguir las indicaciones de **III-2. WPS** como método alternativo para conectar su cámara de red a la red inalámbrica.

III-1. Aplicación EdiView

Utilice la aplicación EdiView para smartphones para instalar el Wi-Fi de la cámara y controlar su cámara en modo remoto desde cualquier conexión Internet.



Para instalar la cámara usando un cable Ethernet en vez del Wi-Fi, consulte el manual de usuario.

III-1-1. Android

1. Busque en Google Play la aplicación “EdiView II”, descárguela e instálela.

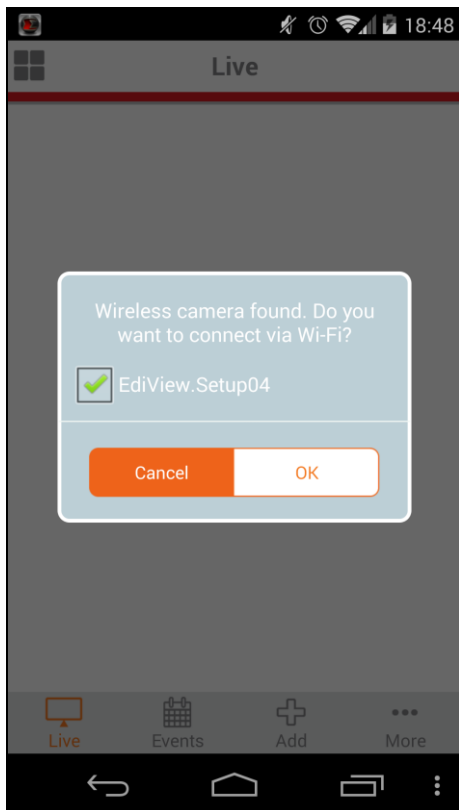


2. Asegúrese de que el Wi-Fi de su dispositivo Android esté encendido y abra la aplicación EdiView II. Seleccione la cámara de red como se muestra abajo y haga clic en “OK” para continuar. Espere un momento hasta que EdiView se conecte a su cámara de red.

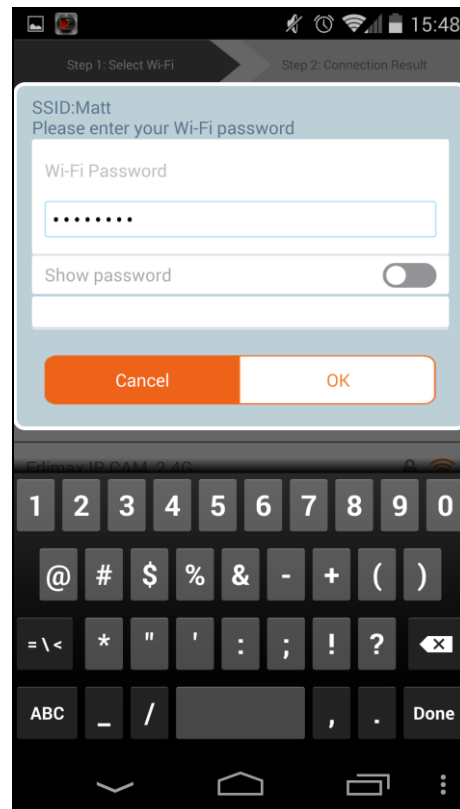
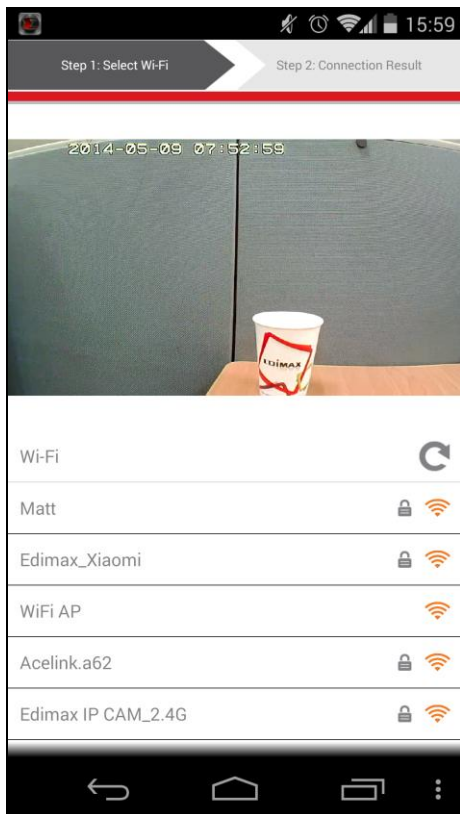


Seleccione el SSID de la cámara de red. El SSID exclusivo se encuentra en la etiqueta del producto situada en la parte

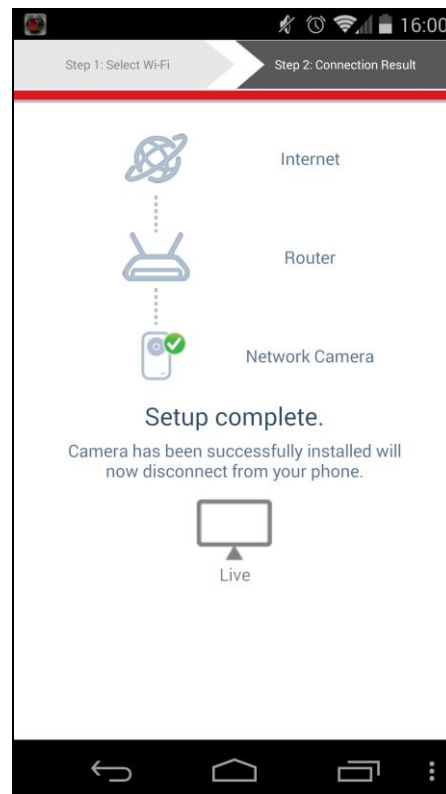
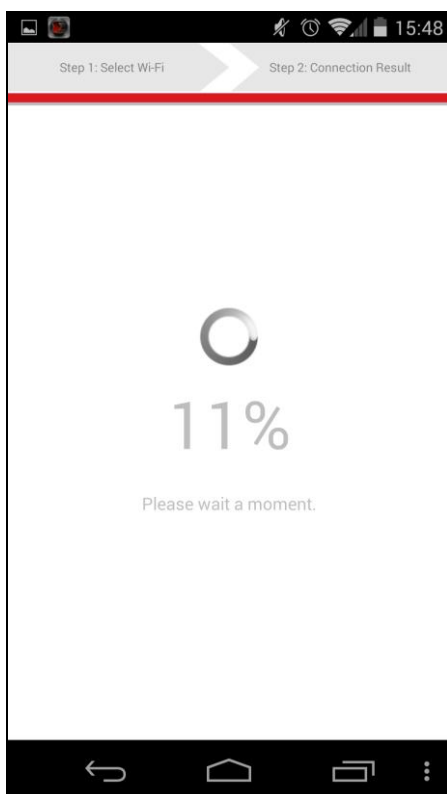
*posterior de la cámara y es “EdiView.Setup**”, donde ** son los dos últimos caracteres de la dirección MAC exclusiva de su cámara.*



- 3.** Seleccione su red Wi-Fi de la lista, escriba su contraseña Wi-Fi y haga clic en “OK”.

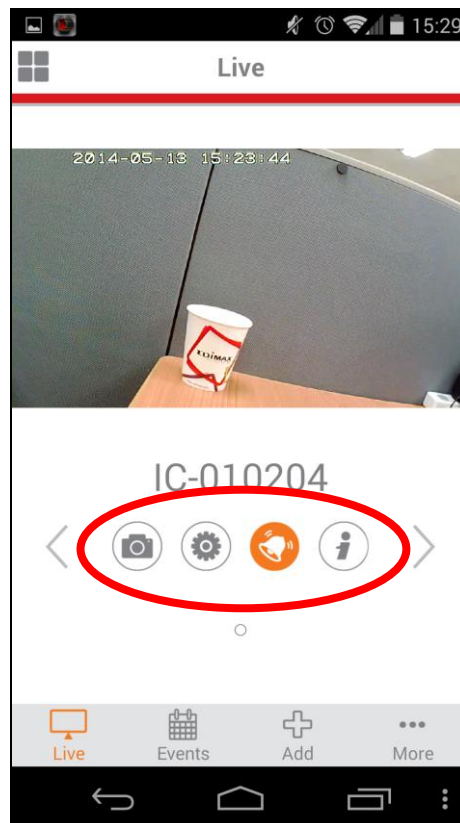
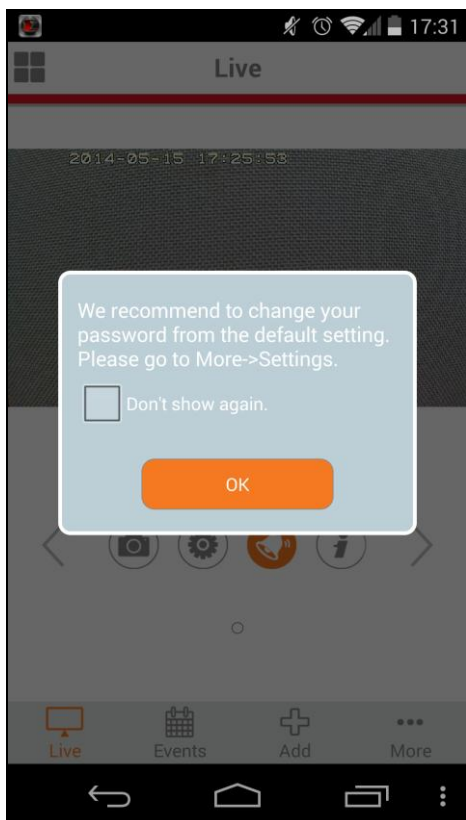


4. Espere un momento hasta que su cámara se conecte al Wi-Fi. Cuando vea la pantalla “Instalación completada”, haga clic en el icono “En Directo” para continuar o espere unos segundos para continuar automáticamente.



5. La instalación se ha completado. El led de alimentación **verde** de la cámara debe aparecer **encendido**. Debe ver la transmisión en directo de su cámara de red, que podrá ver cada vez que este conectado a Internet.

 **Se recomienda cambiar la contraseña de la cámara. Vaya a “Más” en el botón de la esquina derecha y seleccione “Ajustes”.**



 **Puede configurar los ajustes y las funciones de la cámara usando los iconos de abajo de la imagen en directo.**

III-1-2. iPhone

Utilice la aplicación EdiView para smartphones para instalar el Wi-Fi de la cámara y controlar su cámara en modo remoto desde cualquier conexión Internet.

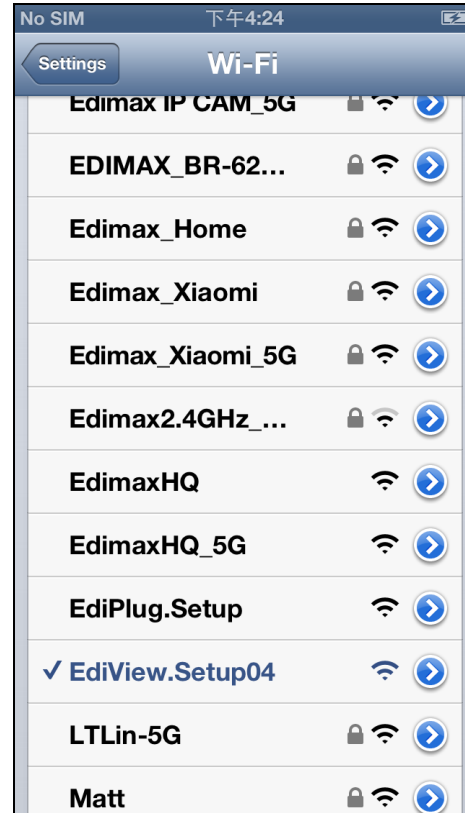
1. Busque en Google Play la aplicación “EdiView II”, descárguela e instálela.



2. Vaya a los ajustes de Wi-Fi del iPhone y conéctese al SSID de la cámara de red.

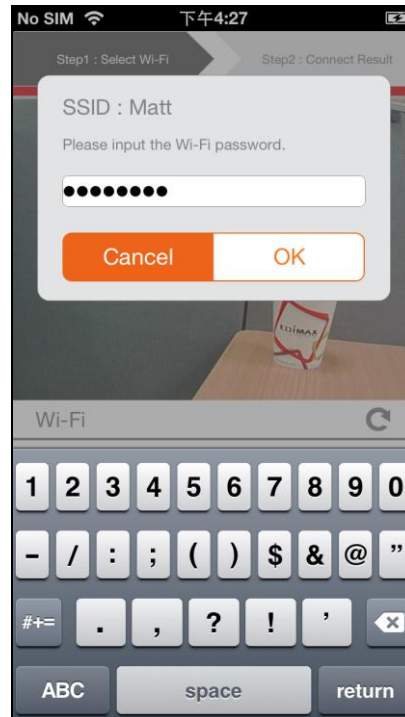
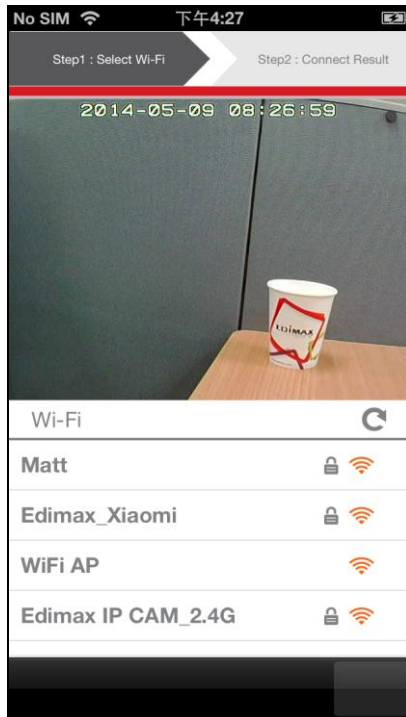


El SSID exclusivo de la cámara de red se encuentra en la etiqueta del producto situada en la parte posterior de la cámara y es “EdiView.Setup**”, donde ** son los dos últimos caracteres de la dirección MAC exclusiva de su cámara.

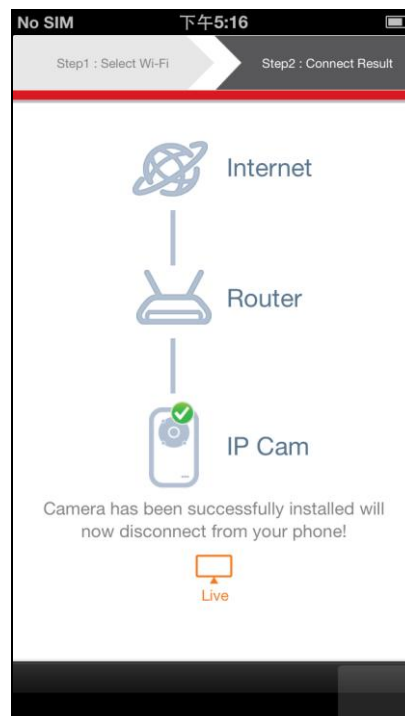
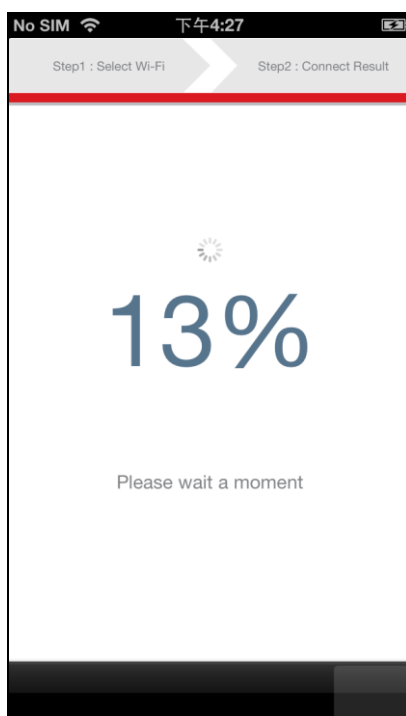


3. Abra la aplicación EdiView y seleccione su red Wi-Fi de la lista. Escriba la contraseña de Wi-Fi y toque “Aceptar”.

 Si le pide que permita las notificaciones de inserción, seleccione “Sí”.

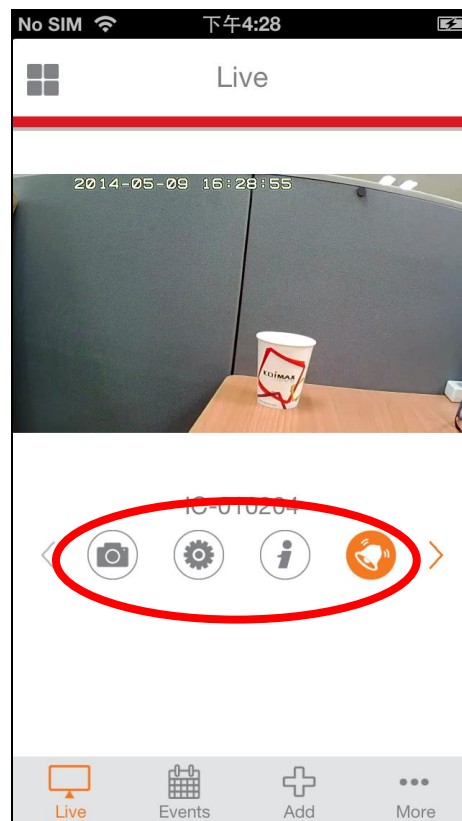
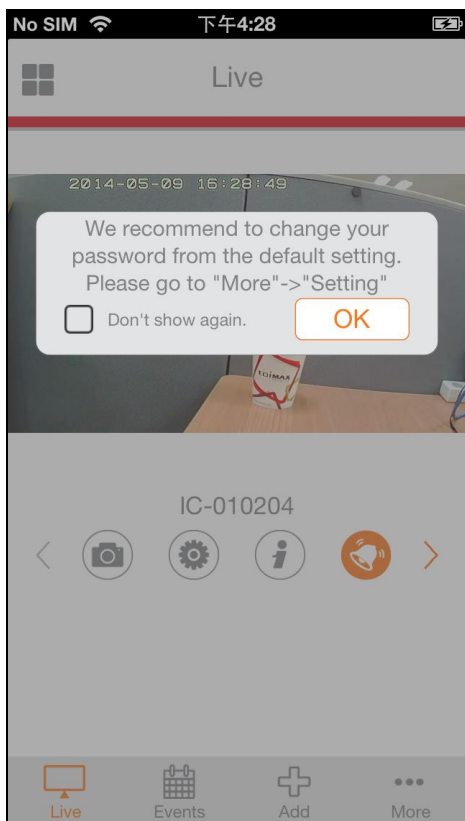


6. Espere un momento hasta que su cámara se conecte al Wi-Fi. Cuando vea la pantalla “Instalación completada”, haga clic en el icono “En directo” para continuar o espere unos segundos para continuar automáticamente.



7. La instalación se ha completado. El led de alimentación **verde** de la cámara aparece **encendido**. Debe ver la transmisión en directo de la cámara de red, en cualquier momento que esté conectado a Internet.

 **Se recomienda cambiar la contraseña de la cámara. Vaya a "Más" en el botón de la esquina derecha y seleccione "Ajustes".**



 **Puede configurar los ajustes y las funciones de la cámara usando los iconos de abajo de la imagen en directo.**

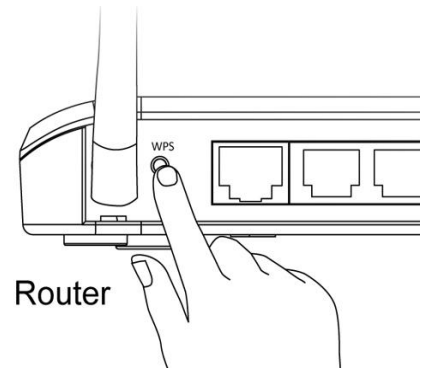
III-2. WPS (configuración Wi-Fi protegida)

El botón WPS es un método rápido y fácil para establecer una conexión inalámbrica segura entre la cámara de red y el enrutador inalámbrico/punto de acceso.

1. Pulse y mantenga pulsado el botón WPS de su **enrutador/punto de acceso inalámbrico** durante el tiempo necesario para activar la WPS.



Controle las instrucciones de su enrutador inalámbrico/punto de acceso para saber cuánto tiempo debe mantener pulsado el botón WPS para activar la WPS.

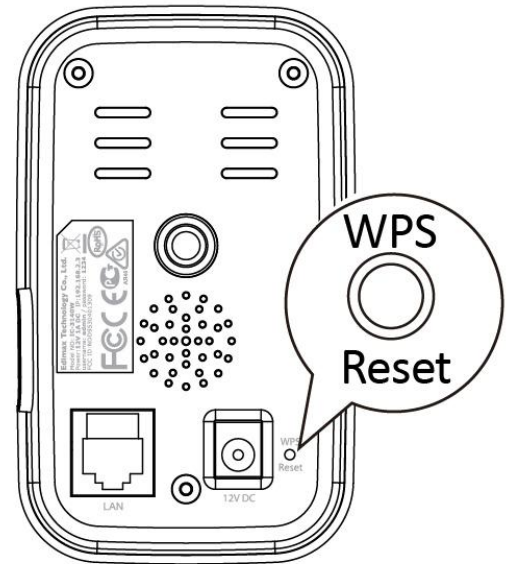


2. Dentro de los dos minutos siguientes, pulse el botón WPS/Restablecer de la cámara de red durante 2 – 5 segundos para activar la WPS. El LED **verde** de LAN **parpadeará lentamente** indicando que la WPS está activa.



Tenga cuidado de no tener pulsado el botón WPS/Restablecer durante demasiado tiempo pues se restablecerá la cámara de red (consulte 1-5.)


3. Los dispositivos establecerán una conexión inalámbrica segura. El led de LAN **verde** **parpadeará velozmente** para indicar que la conexión WPS es correcta.

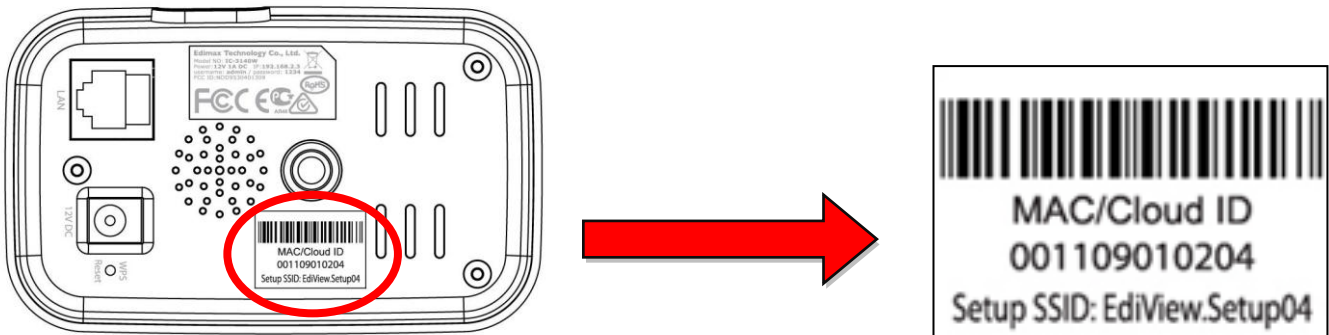


III-3. Myedimax.com

Puede usar el ID de nube de Myedimax.com de su cámara de red para monitorizar su cámara en forma remota usando un navegador web desde cualquier conexión Internet. El LED **verde** de alimentación de su cámara de red **debe** estar **encendido** para poder ejecutar esta función.

1. Identifique el ID de nube de su cámara de red. El ID de nube se muestra en la etiqueta del producto que se encuentra en la parte posterior de la cámara de red (consulte I-4.).

 **El ID de nube es una cadena de 12 caracteres formada por números de 0 a 9 y letras de A a F, exclusiva para su cámara de red.**



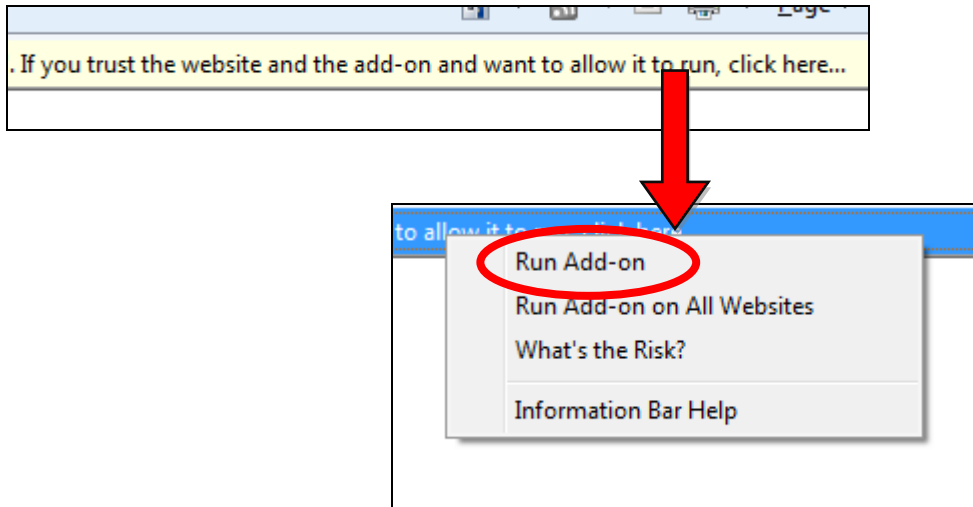
2. Introduzca **[ID de nube].myedimax.com** en la barra de direcciones del navegador web.

Por ejemplo, si su ID de nube es **001109010204**, introduzca **001109010204.myedimax.com** en su navegador web.

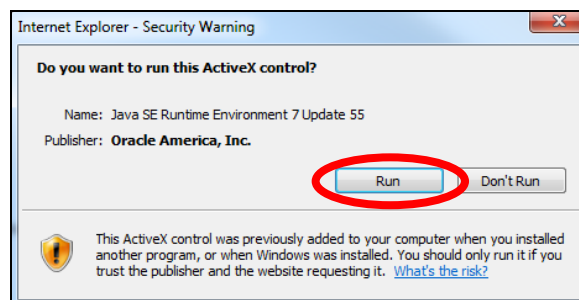
 **Se recomienda usar Internet Explorer.**



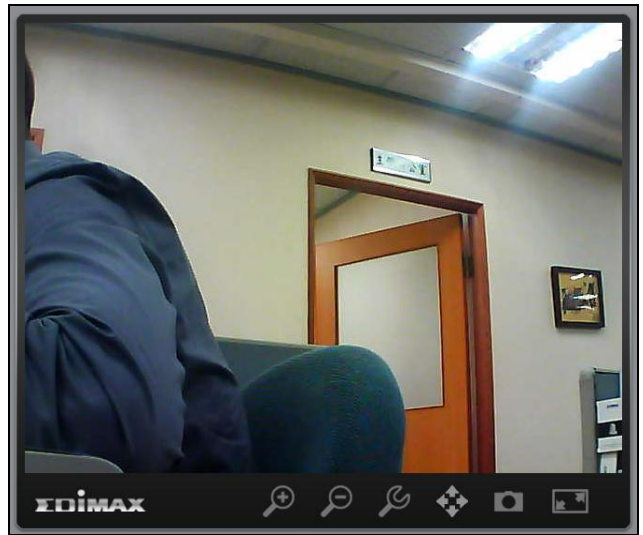
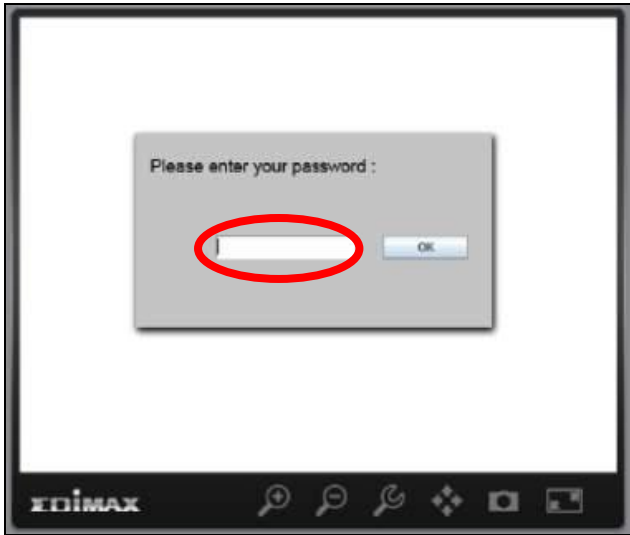
3. Puede que se le solicite autorización para ejecutar un complemento de Java. Haga clic en el mensaje, donde dice "Hacer clic aquí" y después, en "Ejecutar complemento".



 ***Si aparece cualquier otra advertencia/aviso, seleccione "Ejecutar" o "Permitir" u otra opción similar, dependiendo del navegador.***



4. Introduzca la contraseña de su cámara (contraseña predeterminada: 1234) y haga clic en "Aceptar" para ver la transmisión en directo de su cámara de red.



Federal Communication Commission Interference Statement

This equipment has been tested and found to comply with the limits for a Class B digital device, pursuant to Part 15 of FCC Rules. These limits are designed to provide reasonable protection against harmful interference in a residential installation. This equipment generates, uses, and can radiate radio frequency energy and, if not installed and used in accordance with the instructions, may cause harmful interference to radio communications. However, there is no guarantee that interference will not occur in a particular installation. If this equipment does cause harmful interference to radio or television reception, which can be determined by turning the equipment off and on, the user is encouraged to try to correct the interference by one or more of the following measures:

1. Reorient or relocate the receiving antenna.
2. Increase the separation between the equipment and receiver.
3. Connect the equipment into an outlet on a circuit different from that to which the receiver is connected.
4. Consult the dealer or an experienced radio technician for help.

FCC Caution

This device and its antenna must not be co-located or operating in conjunction with any other antenna or transmitter. This device complies with Part 15 of the FCC Rules. Operation is subject to the following two conditions: (1) this device may not cause harmful interference, and (2) this device must accept any interference received, including interference that may cause undesired operation. Any changes or modifications not expressly approved by the party responsible for compliance could void the authority to operate equipment.

Federal Communications Commission (FCC) Radiation Exposure Statement

This equipment complies with FCC radiation exposure set forth for an uncontrolled environment. In order to avoid the possibility of exceeding the FCC radio frequency exposure limits, human proximity to the antenna shall not be less than 2.5cm (1 inch) during normal operation.

Federal Communications Commission (FCC) RF Exposure Requirements

SAR compliance has been established in the laptop computer(s) configurations with PCMCIA slot on the side near the center, as tested in the application for certification, and can be used in laptop computer(s) with substantially similar physical dimensions, construction, and electrical and RF characteristics. Use in other devices such as PDAs or lap pads is not authorized. This transmitter is restricted for use with the specific antenna tested in the application for certification. The antenna(s) used for this transmitter must not be co-located or operating in conjunction with any other antenna or transmitter.

R&TTE Compliance Statement

This equipment complies with all the requirements of DIRECTIVE 1999/5/EC OF THE EUROPEAN PARLIAMENT AND THE COUNCIL of March 9, 1999 on radio equipment and telecommunication terminal equipment and the mutual recognition of their conformity (R&TTE). The R&TTE Directive repeals and replaces in the directive 98/13/EEC (Telecommunications Terminal Equipment and Satellite Earth Station Equipment) As of April 8, 2000.

Safety

This equipment is designed with the utmost care for the safety of those who install and use it. However, special attention must be paid to the dangers of electric shock and static electricity when working with electrical equipment. All guidelines of this and of the computer manufacture must therefore be allowed at all times to ensure the safe use of the equipment.

EU Countries Intended for Use


The ETSI version of this device is intended for home and office use in Austria, Belgium, Bulgaria, Cyprus, Czech, Denmark, Estonia, Finland, France, Germany, Greece, Hungary, Ireland, Italy, Latvia, Lithuania, Luxembourg, Malta, Netherlands, Poland, Portugal, Romania, Slovakia, Slovenia, Spain, Sweden, Turkey, and United Kingdom. The ETSI version of this device is also authorized for use in EFTA member states: Iceland, Liechtenstein, Norway, and Switzerland.

EU Countries Not Intended for Use

None

EU Declaration of Conformity

- English:** This equipment is in compliance with the essential requirements and other relevant provisions of Directive 2004/108/EC, 2006/95/EC, 2009/125/EC.
- French:** Cet équipement est conforme aux exigences essentielles et autres dispositions de la directive 2004/108/EC, 2006/95/EC, 2009/125/EC
- Czechian:** Toto zařízení je v souladu se základními požadavky a ostatními příslušnými ustanoveními směrnic 2004/108/EC, 2006/95/EC, 2009/125/EC.
- Polish:** Urządzenie jest zgodne z ogólnymi wymaganiami oraz szczególnymi warunkami określonymi Dyrektywą UE 2004/108/EC, 2006/95/EC, 2009/125/EC
- Romanian:** Acest echipament este în conformitate cu cerințele esențiale și alte prevederi relevante ale Directivei 2004/108/EC, 2006/95/EC, 2009/125/EC.
- Russian:** Это оборудование соответствует основным требованиям и положениям Директивы 2004/108/EC, 2006/95/EC, 2009/125/EC.
- Magyar:** Ez a berendezés megfelel az alapvető követelményeknek és más vonatkozó irányelveknek 2004/108/EC, 2006/95/EC, 2009/125/EC
- Türkçe:** Bu cihaz 2004/108/EC, 2006/95/EC, 2009/125/EC direktifleri zorunlu istekler ve diğer hükümlerle ile uyumludur.
- Ukrainian:** Обладнання відповідає вимогам і умовам директиви 2004/108/EC, 2006/95/EC, 2009/125/EC.
- Slovakian:** Toto zariadenie spĺňa základné požiadavky a ďalšie príslušné ustanovenia smerníc 2004/108/EC, 2006/95/EC, 2009/125/EC.
- German:** Dieses Gerät erfüllt die Voraussetzungen gemäß den Richtlinien 2004/108/EC, 2006/95/EC, 2009/125/EC.
- Spanish:** El presente equipo cumple los requisitos esenciales de la Directiva 2004/108/EC, 2006/95/EC, 2009/125/EC.
- Italian:** Questo apparecchio è conforme ai requisiti essenziali e alle altre disposizioni applicabili della Direttiva 2004/108/EC, 2006/95/EC, 2009/125/EC.
- Dutch:** Dit apparaat voldoet aan de essentiële eisen en andere van toepassing zijnde bepalingen van richtlijn 2004/108/EC, 2006/95/EC, 2009/125/EC.
- Portuguese:** Este equipamento cumpre os requisitos essenciais da Directiva 2004/108/EC, 2006/95/EC, 2009/125/EC
- Norwegian:** Dette utstyret er i samsvar med de viktigste kravene og andre relevante regler i Direktiv 2004/108/EC, 2006/95/EC, 2009/125/EC.
- Swedish:** Denna utrustning är i överensstämmelse med de väsentliga kraven och övriga relevanta bestämmelser i direktiv 2004/108/EC, 2006/95/EC, 2009/125/EC.
- Danish:** Dette udstyr er i overensstemmelse med de væsentligste krav og andre relevante forordninger i direktiv 2004/108/EC, 2006/95/EC, 2009/125/EC.
- Finnish:** Tämä laite täyttää direktiivien 2004/108/EC, 2006/95/EC, 2009/125/EC oleelliset vaatimukset ja muut asiaankuuluvat määräykset.

FOR USE IN 



WEEE Directive & Product Disposal



At the end of its serviceable life, this product should not be treated as household or general waste. It should be handed over to the applicable collection point for the recycling of electrical and electronic equipment, or returned to the supplier for disposal.

Declaration of Conformity

We, Edimax Technology Co., Ltd., declare under our sole responsibility, that the equipment described below complies with the requirements of the European R&TTE directive (1999/5/EC, 2006/95/EC)

Equipment: Internet Camera
Model No.: IC-3140W

The following European standards for essential requirements have been followed:

Spectrum : ETSI EN 300 328 V1.8.1 (2012-06);
EMC : EN 301 489-1 V1.9.2 (2011-09)
EN 301 489-17 V2.2.1 (2012-09)
EMF : EN 62311:2008
Safety(LVD) : IEC 60950-1:2005 (2nd Edition); Am 1:2009
EN 60950-1 : 2006 + A11:2009 + A1:2010 + A12:2011


Edimax Technology Europe B.V.
Fijenhof 2,
5652 AE Eindhoven,
THE NETHERLANDS

a company of :
Edimax Technology Co., Ltd.,
No. 3, Wu Chuan 3rd Road,
Wu-Ku Industrial Park,
New Taipei City, Taiwan

Printed Name: Vivian Ma
Title: Director
Edimax Technology Europe B.V.

Date of Signature: June, 2014

Signature:



Printed Name: Albert Chang

Title:

Director

Edimax Technology Co., Ltd.



Notice According to GNU General Public License Version 2

This product includes software that is subject to the GNU General Public License version 2. The program is free software and distributed without any warranty of the author. We offer, valid for at least three years, to give you, for a charge no more than the costs of physically performing source distribution, a complete machine-readable copy of the corresponding source code.

Das Produkt beinhaltet Software, die den Bedingungen der GNU/GPL-Version 2 unterliegt. Das Programm ist eine sog. „Free Software“, der Autor stellt das Programm ohne irgendeine Gewährleistungen zur Verfügung. Wir bieten Ihnen für einen Zeitraum von drei Jahren an, eine vollständige maschinenlesbare Kopie des Quelltextes der Programme zur Verfügung zu stellen – zu nicht höheren Kosten als denen, die durch den physikalischen Kopiervorgang anfallen.

GNU GENERAL PUBLIC LICENSE

Version 2, June 1991

Copyright (C) 1989, 1991 Free Software Foundation, Inc. 51 Franklin Street, Fifth Floor, Boston, MA 02110-1301, USA
Everyone is permitted to copy and distribute verbatim copies of this license document, but changing it is not allowed.

Preamble

The licenses for most software are designed to take away your freedom to share and change it. By contrast, the GNU General Public License is intended to guarantee your freedom to share and change free software--to make sure the software is free for all its users. This General Public License applies to most of the Free Software Foundation's software and to any other program whose authors commit to using it. (Some other Free Software Foundation software is covered by the GNU Lesser General Public License instead.) You can apply it to your programs, too.

When we speak of free software, we are referring to freedom, not price. Our General Public Licenses are designed to make sure that you have the freedom to distribute copies of free software (and charge for this service if you wish), that you receive source code or can get it if you want it, that you can change the software or use pieces of it in new free programs; and that you know you can do these things.

To protect your rights, we need to make restrictions that forbid anyone to deny you these rights or to ask you to surrender the rights. These restrictions translate to certain responsibilities for you if you distribute copies of the software, or if you modify it.

For example, if you distribute copies of such a program, whether gratis or for a fee, you must give the recipients all the rights that you have. You must make sure that they, too, receive or can get the source code. And you must show them these terms so they know their rights.

We protect your rights with two steps: (1) copyright the software, and (2) offer you this license which gives you legal permission to copy, distribute and/or modify the software.

Also, for each author's protection and ours, we want to make certain that everyone understands that there is no warranty for this free software. If the software is modified by someone else and passed on, we want its recipients to know that what they have is not the original, so that any problems introduced by others will not reflect on the original authors' reputations.

Finally, any free program is threatened constantly by software patents. We wish to avoid the danger that redistributors of a free program will individually obtain patent licenses, in effect making the program proprietary. To prevent this, we have made it clear that any patent must be licensed for everyone's free use or not licensed at all.

The precise terms and conditions for copying, distribution and modification follow.

TERMS AND CONDITIONS FOR COPYING, DISTRIBUTION AND MODIFICATION

0. This License applies to any program or other work which contains a notice placed by the copyright holder saying it may be distributed under the terms of this General Public License. The "Program", below, refers to any such program or work, and a "work based on the Program" means either the Program or any derivative work under copyright law: that is to say, a work containing the Program or a portion of it, either verbatim or with modifications and/or translated into another language. (Hereinafter, translation is included without limitation in the term "modification".) Each licensee is addressed as "you".

Activities other than copying, distribution and modification are not covered by this License; they are outside its scope. The act of running the Program is not restricted, and the output from the Program is covered only if its contents constitute a work based on the Program (independent of having been made by running the Program). Whether that is true depends on what the Program does.

1. You may copy and distribute verbatim copies of the Program's source code as you receive it, in any medium, provided that you conspicuously and appropriately publish on each copy an appropriate copyright notice and disclaimer of warranty; keep

intact all the notices that refer to this License and to the absence of any warranty; and give any other recipients of the Program a copy of this License along with the Program.

You may charge a fee for the physical act of transferring a copy, and you may at your option offer warranty protection in exchange for a fee.

2. You may modify your copy or copies of the Program or any portion of it, thus forming a work based on the Program, and copy and distribute such modifications or work under the terms of Section 1 above, provided that you also meet all of these conditions:

- a) You must cause the modified files to carry prominent notices stating that you changed the files and the date of any change.
- b) You must cause any work that you distribute or publish, that in whole or in part contains or is derived from the Program or any part thereof, to be licensed as a whole at no charge to all third parties under the terms of this License.
- c) If the modified program normally reads commands interactively when run, you must cause it, when started running for such interactive use in the most ordinary way, to print or display an announcement including an appropriate copyright notice and a notice that there is no warranty (or else, saying that you provide a warranty) and that users may redistribute the program under these conditions, and telling the user how to view a copy of this License. (Exception: if the Program itself is interactive but does not normally print such an announcement, your work based on the Program is not required to print an announcement.)

These requirements apply to the modified work as a whole. If identifiable sections of that work are not derived from the Program, and can be reasonably considered independent and separate works in themselves, then this License, and its terms, do not apply to those sections when you distribute them as separate works. But when you distribute the same sections as part of a whole which is a work based on the Program, the distribution of the whole must be on the terms of this License, whose permissions for other licensees extend to the entire whole, and thus to each and every part regardless of who wrote it.

Thus, it is not the intent of this section to claim rights or contest your rights to work written entirely by you; rather, the intent is to exercise the right to control the distribution of derivative or collective works based on the Program.

In addition, mere aggregation of another work not based on the Program with the Program (or with a work based on the Program) on a volume of a storage or distribution medium does not bring the other work under the scope of this License.

3. You may copy and distribute the Program (or a work based on it, under Section 2) in object code or executable form under the terms of Sections 1 and 2 above provided that you also do one of the following:

- a) Accompany it with the complete corresponding machine-readable source code, which must be distributed under the terms of Sections 1 and 2 above on a medium customarily used for software interchange; or,
- b) Accompany it with a written offer, valid for at least three years, to give any third party, for a charge no more than your cost of physically performing source distribution, a complete machine-readable copy of the corresponding source code, to be distributed under the terms of Sections 1 and 2 above on a medium customarily used for software interchange; or,
- c) Accompany it with the information you received as to the offer to distribute corresponding source code. (This alternative is allowed only for noncommercial distribution and only if you received the program in object code or executable form with such an offer, in accord with Subsection b above.)

The source code for a work means the preferred form of the work for making modifications to it. For an executable work, complete source code means all the source code for all modules it contains, plus any associated interface definition files, plus the scripts used to control compilation and installation of the executable. However, as a special exception, the source code distributed need not include anything that is normally distributed (in either source or binary form) with the major components (compiler, kernel, and so on) of the operating system on which the executable runs, unless that component itself accompanies the executable.

If distribution of executable or object code is made by offering access to copy from a designated place, then offering equivalent access to copy the source code from the same place counts as distribution of the source code, even though third parties are not compelled to copy the source along with the object code.

4. You may not copy, modify, sublicense, or distribute the Program except as expressly provided under this License. Any attempt otherwise to copy, modify, sublicense or distribute the Program is void, and will automatically terminate your rights under this License. However, parties who have received copies, or rights, from you under this License will not have their licenses terminated so long as such parties remain in full compliance.

5. You are not required to accept this License, since you have not signed it. However, nothing else grants you permission to modify or distribute the Program or its derivative works. These actions are prohibited by law if you do not accept this License. Therefore, by modifying or distributing the Program (or any work based on the Program), you indicate your acceptance of this License to do so, and all its terms and conditions for copying, distributing or modifying the Program or works based on it.

6. Each time you redistribute the Program (or any work based on the Program), the recipient automatically receives a license from the original licensor to copy, distribute or modify the Program subject to these terms and conditions. You may not impose any further restrictions on the recipients' exercise of the rights granted herein. You are not responsible for enforcing compliance by third parties to this License.

7. If, as a consequence of a court judgment or allegation of patent infringement or for any other reason (not limited to patent issues), conditions are imposed on you (whether by court order, agreement or otherwise) that contradict the conditions of this License, they do not excuse you from the conditions of this License. If you cannot distribute so as to satisfy simultaneously your obligations under this License and any other pertinent obligations, then as a consequence you may not distribute the Program at all. For example, if a patent license would not permit royalty-free redistribution of the Program by all those who receive copies directly or indirectly through you, then the only way you could satisfy both it and this License would be to refrain entirely from distribution of the Program.

If any portion of this section is held invalid or unenforceable under any particular circumstance, the balance of the section is intended to apply and the section as a whole is intended to apply in other circumstances.

It is not the purpose of this section to induce you to infringe any patents or other property right claims or to contest validity of any such claims; this section has the sole purpose of protecting the integrity of the free software distribution system, which is implemented by public license practices. Many people have made generous contributions to the wide range of software distributed through that system in reliance on consistent application of that system; it is up to the author/donor to decide if he or she is willing to distribute software through any other system and a licensee cannot impose that choice.

This section is intended to make thoroughly clear what is believed to be a consequence of the rest of this License.

8. If the distribution and/or use of the Program is restricted in certain countries either by patents or by copyrighted interfaces, the original copyright holder who places the Program under this License may add an explicit geographical distribution limitation excluding those countries, so that distribution is permitted only in or among countries not thus excluded. In such case, this License incorporates the limitation as if written in the body of this License.

9. The Free Software Foundation may publish revised and/or new versions of the General Public License from time to time. Such new versions will be similar in spirit to the present version, but may differ in detail to address new problems or concerns.

Each version is given a distinguishing version number. If the Program specifies a version number of this License which applies to it and "any later version", you have the option of following the terms and conditions either of that version or of any later version published by the Free Software Foundation. If the Program does not specify a version number of this License, you may choose any version ever published by the Free Software Foundation.

10. If you wish to incorporate parts of the Program into other free programs whose distribution conditions are different, write to the author to ask for permission. For software which is copyrighted by the Free Software Foundation, write to the Free Software Foundation; we sometimes make exceptions for this. Our decision will be guided by the two goals of preserving the free status of all derivatives of our free software and of promoting the sharing and reuse of software generally.

NO WARRANTY

11. BECAUSE THE PROGRAM IS LICENSED FREE OF CHARGE, THERE IS NO WARRANTY FOR THE PROGRAM, TO THE EXTENT PERMITTED BY APPLICABLE LAW. EXCEPT WHEN OTHERWISE STATED IN WRITING THE COPYRIGHT HOLDERS AND/OR OTHER PARTIES PROVIDE THE PROGRAM "AS IS" WITHOUT WARRANTY OF ANY KIND, EITHER EXPRESSED OR IMPLIED, INCLUDING, BUT NOT LIMITED TO, THE IMPLIED WARRANTIES OF MERCHANTABILITY AND FITNESS FOR A PARTICULAR PURPOSE. THE ENTIRE RISK AS TO THE QUALITY AND PERFORMANCE OF THE PROGRAM IS WITH YOU. SHOULD THE PROGRAM PROVE DEFECTIVE, YOU ASSUME THE COST OF ALL NECESSARY SERVICING, REPAIR OR CORRECTION.

12. IN NO EVENT UNLESS REQUIRED BY APPLICABLE LAW OR AGREED TO IN WRITING WILL ANY COPYRIGHT HOLDER, OR ANY OTHER PARTY WHO MAY MODIFY AND/OR REDISTRIBUTE THE PROGRAM AS PERMITTED ABOVE, BE LIABLE TO YOU FOR DAMAGES, INCLUDING ANY GENERAL, SPECIAL, INCIDENTAL OR CONSEQUENTIAL DAMAGES ARISING OUT OF THE USE OR INABILITY TO USE THE PROGRAM (INCLUDING BUT NOT LIMITED TO LOSS OF DATA OR DATA BEING RENDERED INACCURATE OR LOSSES SUSTAINED BY YOU OR THIRD PARTIES OR A FAILURE OF THE PROGRAM TO OPERATE WITH ANY OTHER PROGRAMS), EVEN IF SUCH HOLDER OR OTHER PARTY HAS BEEN ADVISED OF THE POSSIBILITY OF SUCH DAMAGES.



ΣDIMAX
NETWORKING PEOPLE TOGETHER