

✓ 7400
x 7401



7400AS
7401AS

C  **US** **CE**

**8 digit Low Power Bi-directional
Totalising Counters**

English
Page 2

**8-Stelliger Bi-Direktionaler Summen-
zähler mit niedrigem Stromverbrauch**

Deutsch
Seite 3

**Compteur Totalisateur Bidirectionnel à
8 Chiffres, Faible Consommation**

Français
Page 4

**Contador Totalizador Bidireccional,
de 8 dígitos de bajo consumo**

Español
Página 5

**Contatore Totalizzatore ad 8 Cifre
Bidirezionale, a basso consumo**

Italiano
Pagina 6

Higher Voltage Power Supply,
Anschluß an Versorgungsspannung >3.4V,
Tension d'alimentation DC plus élevée,
Alimentación con tensiones superiores a los 3.4V CC,
Alimentazione in corrente continua a più alta tensione
Dimensions, Abmessungen, Dimensiones, Dimensioni

Page 7,8
Seite 7,8
Pagina 7,8

Specification

Supply

2.6 - 3.4VDC

Current consumption

<10 μ A, 5 μ A typical.

Reset Button

The 7400 has a Reset Button.

The 7401 is non-resettable.

Display

8 digit black LCD, 8mm characters

Count Range

99999999 - rollover to 0

Operating temperature

-10 $^{\circ}$ C to +60 $^{\circ}$ C

Storage temperature

-20 $^{\circ}$ C to +60 $^{\circ}$ C

Altitude

Up to 2000m

Relative Humidity

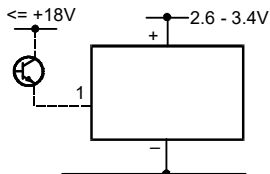
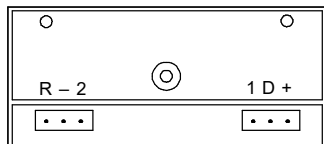
80% max up to 31 $^{\circ}$ C, decreasing to 50% max at 40 $^{\circ}$ C

Note:

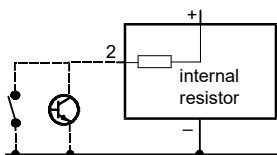
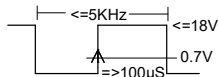
This product is ideally suited to battery powered applications. Should the product be used in a circuit where an external power source is used, then the complete system will require separate approval to meet the CE standards.

Connections

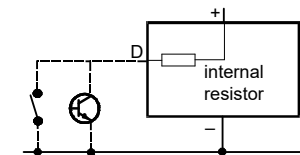
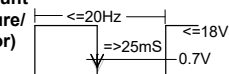
This product can be powered from a higher voltage DC supply using the external voltage control circuit shown on page 7.



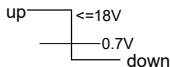
High Speed Count (TTL/CMOS)



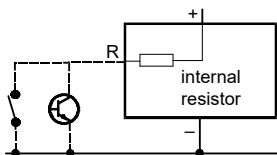
Low Speed Count (Contact Closure/ Open Collector)



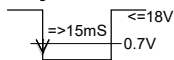
Direction (TTL/CMOS)



2



External Reset (Contact Closure/ Open Collector)



Spezifikation

Versorgung

2.6 - 3.4VDC

Stromaufnahme

<10 μ A, 5 μ A typisch.

Rückstelltaste

Das Modell 7400 hat eine Rückstelltaste
Das Modell 7401 hat keine.

Anzeige

8 stelliges schwarzes LCD
Zeichenhöhe 8 mm

Zählbereich

99999999 - Überlauf 0

Betriebstemperatur

-10°C bis +60°C

Lagerungstemperatur

-20°C bis +60°C

Höhe

Bis zu 2.000 m

Relative Feuchte

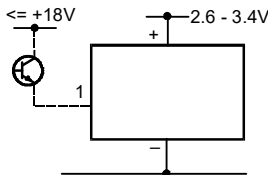
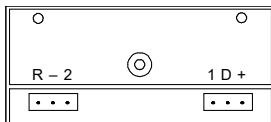
Max. 80% bis zu 31°C, Abnahme auf
50% bei max. 40°C

Hinweis:

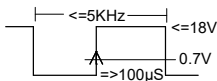
Dieses Produkt eignet sich optimal für Anwendungen mit Batteriebetrieb. Wenn das Produkt innerhalb einer Schaltung mit externer Spannungsquelle (Netzbetrieb) eingesetzt wird, ist für das vollständige System die Einhaltung der Niederspannungsrichtlinie, sowie der CE-Normen erforderlich.

Anschlüsse

Dieses Produkt kann mit einer höheren externen Gleichspannung betrieben werden, bitte beachten Sie dabei die Hinweise auf Seite 7.

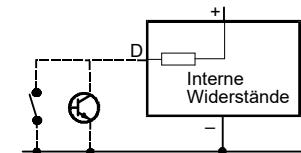
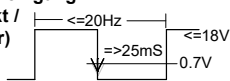


Elektronischer Zählengang (TTL/CMOS)

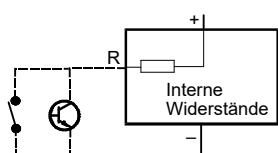
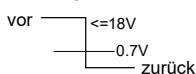


Langsame Zählengang

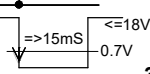
(Schließkontakt /
Open Collector)



Zählrichtung (TTL/CMOS)



Externe Rücksetzung (Schließkontakt / Open Collector)



Caractéristiques

Alimentation

2.6 - 3.4VCC

Consommation de courant

<10 μ A, 5 μ A moyenne.

Poussoir de RAZ

Le 7400 a un poussoir de RAZ

Le 7401 n'en a pas.

Affichage

à cristaux liquides noirs 8 chiffres,
caractères 8 mm

Plage de comptage

de 0 à 999999 - décroissant jusqu'à 0

Température de fonctionnement

de -10°C à +60°C

Température de stockage

de -20°C à +60°C

Altitude

Jusqu'à 2000m

Humidité relative

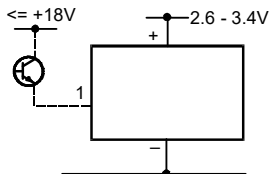
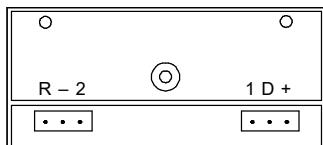
80% max jusqu'à 31°C ; 50% max à
40°C

Remarque:

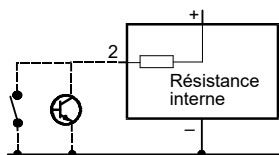
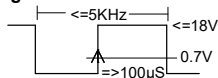
Ce produit est idéal pour les applications alimentées par batteries. Dans le cas où ce produit serait susceptible d'être inclus dans un circuit utilisant une source d'alimentation externe, l'intégralité du système devra alors recevoir l'agrément des normes CE.

Raccordements

La tension d'alimentation de ce produit peut être augmentée à l'aide du circuit externe décrit à la page 7.

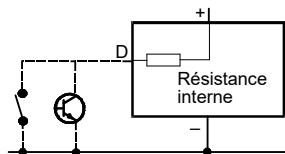
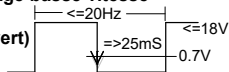


Entrée Comptage haute vitesse (TTL/CMOS)

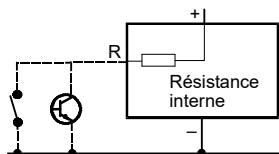
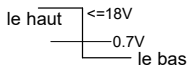


Entrée Comptage basse vitesse

(Contact sec /
Collecteur ouvert)

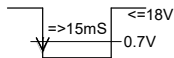


Sens Comptage (TTL/CMOS)



RAZ Externe

(Contact sec /
Collecteur ouvert)



Especificaciones

Alimentación

2.6 - 3.4VCC

Consumo de corriente

< 10 μ A, típico 5 μ A

Pulsador de Reset

El 7400 tiene un pulsador de Reset

El 7401 no lo tiene.

Pantalla

LCD de 8 dígitos negros, caracteres de 8mm de altura

Rango de conteo

0 - 99999999 (vuelve a 0)

Temperatura de operación

-10°C a +60°C

Temperatura de almacenamiento

-20°C a +60°C

Altitud

Hasta 2000m

Humedad Relativa

80% máx. hasta 31°C, disminuyendo al

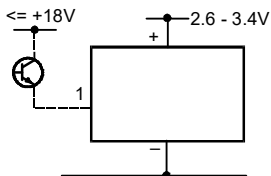
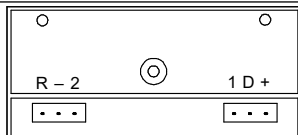
50% máx. a 40°C

Nota:

Este producto es ideal para aplicaciones con alimentación de batería. En el caso que el producto sea utilizado en un circuito alimentado por una fuente de alimentación externa, entonces el sistema completo requerirá una aprobación separada para cumplir con las normas CE.

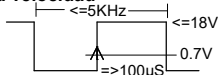
Conexiones

Este producto puede alimentarse con tensiones superiores a los 3.4V CC a través del circuito externo mostrado en la página 7.



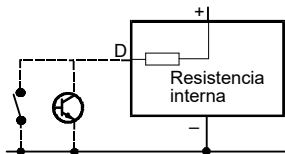
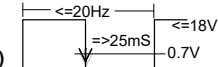
Conteo de alta velocidad

(TTL/CMOS)



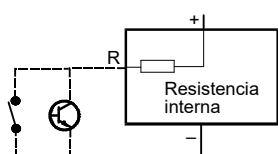
Conteo de baja velocidad

(Cierre por contacto / colector abierto)



Dirección (TTL/CMOS)

arriba <= 18V
0.7V
abajo



Reset externo (Cierre por contacto / colector abierto)

>= 15mS <= 18V
0.7V

Specifiche

Alimentazione

2.6 - 3.4VCC

Corrente assorbita

<10 μ A, di norma 5 μ A

Pulsador de Reset

Il 7400 ha un pulsador de reset.

Il 7401 no.

Display

a cristalli liquidi nero a 8 cifre, caratteri da 8mm

Gamme di conteggio

99999999 – ritorno a 0

Temperatura di funzionamento

da -10°C a +60°C

Temperatura di immagazzinamento

da -20°C a +60°C

Altitudine

Fino a 2000m

Umidità Relativa

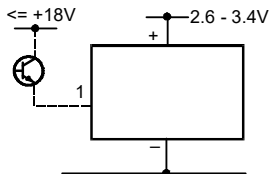
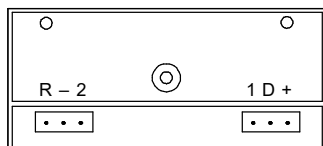
Max 80% fino a 31°C, a scendere fino al 50% max. a 40°C

Nota:

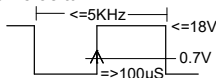
Questo prodotto è ideale per applicazioni alimentate a batteria. Se il prodotto dovesse essere utilizzato in un circuito collegato ad una fonte di alimentazione esterna, il sistema completo richiederà una omologazione separata a norma CE.

Collegamenti

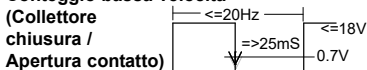
Questo prodotto può essere alimentato con una corrente continua a più alta tensione attraverso il circuito di controllo tensione esterno illustrato a pag. 7.



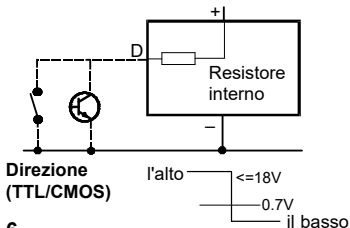
Conteggio alta velocità (TTL/CMOS)



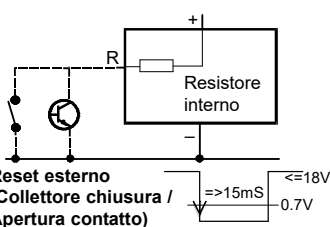
Conteggio bassa velocità



(Collettore chiuso / Apertura contatto)

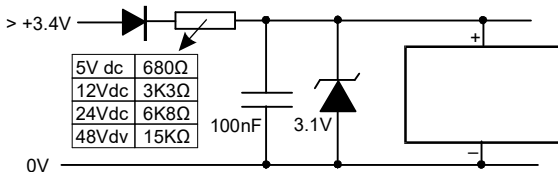


Direzione
(TTL/CMOS)



Reset esterno
(Collettore chiuso / Apertura contatto)

**Higher Voltage Power Supply,
Anschluß an Versorgungsspannung >3.4V,
Tension d'alimentation DC plus élevée,
Circuito auxiliar para tensiones de alimentación mayores a 3.4V CC,
Alimentazione in corrente continua a più alta tensione**



Please note:

Signal cables connected to this device must not exceed 30 metres in length. It will be necessary to install additional surge protection devices if signal cables are installed and routed outside the building.

Bitte beachten Sie folgendes:

Die Signalleitungen, die an dieses Gerät angeschlossen werden, dürfen eine Gesamtlänge von 30m nicht überschreiten. Werden Signalleitungen außerhalb von Gebäuden verlegt, müssen zusätzliche Schutzmaßnahmen gegen Surge Störimpulse vorgesehen werden.

Veillez noter :

La longueur de tout câble mesure (signal) raccordé à cet appareil ne doit pas excéder 30 mètres. Si les câbles « mesure » passent à l'extérieur du bâtiment, il est nécessaire d'installer des dispositifs additionnels de protections de surtensions.

Preghiamo Notare:

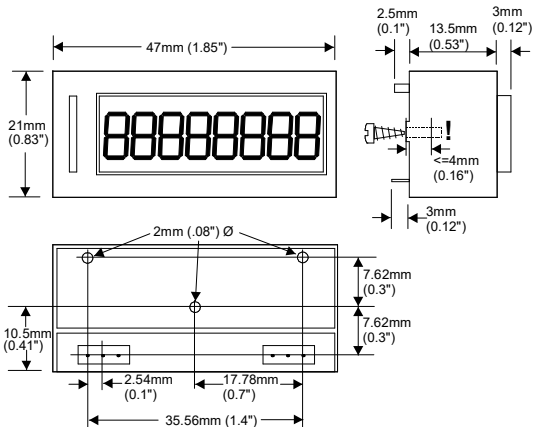
Ogni cavo di segnale collegato a questo dispositivo non può essere più lungo di 30 metri. Se i cavi di segnale sono installati su un percorso esterno all'edificio, è necessario installare dispositivi di protezione di rete addizionali.

Nota:

Cualquier cable de señal conectado a esta unidad no debe de exceder de 30 metros.

Si se instalan cables de señal que sean llevados fuera del edificio, será necesario instalar unidades adicionales de protección de onda.

Dimensions, Abmessungen, Dimensiones, Dimensioni



UK Office

Trumeter, Pilot Mill, Alfred Street, Bury, Lancashire
BL9 9EF, United Kingdom
Tel: +44 161 674 0960
Email: sales.uk@trumeter.com

North America Office

Trumeter, 702 S. Military Trail, Deerfield Beach, Florida
FL 33442, USA
Tel: +1 954 725 6699
Email: sales.usa@trumeter.com

Asia Pacific Distributor

Innovative Design Technologies Sdn. Bhd, Lot 5881, Lorong Iks Bukit Minyak 1
Taman Perindustrian Iks, 14000 Bukit Tengah
Penang, Malaysia
Web: www.idtworld.com
Tel: + 604 5015700
Email: info@idtworld.com

www.trumeter.com