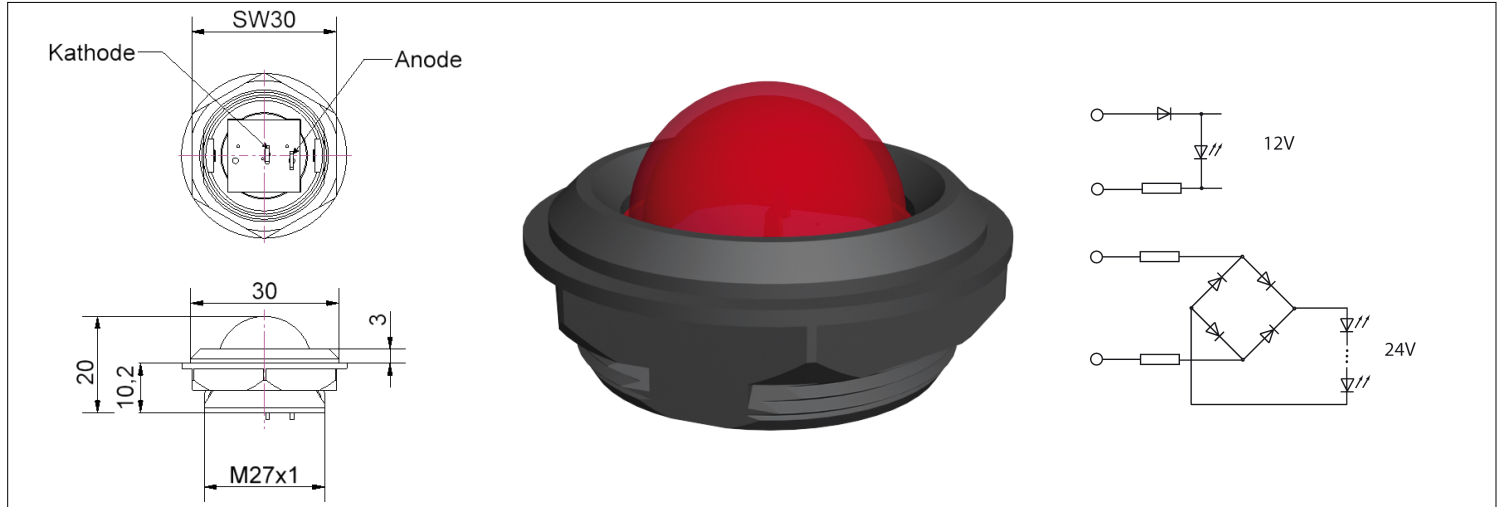


Jumbo LED LDC20x2 Ø20mm mit Montageclip

Jumbo LED LDC20x2 Ø20mm with mounting clip



Spezifikation

Jumbo LED Ø20 mm mit Montageclip für Schraubbefestigung, mattierte Leuchtfläche für optimalen Ein/Aus Kontrast.
 12V AC/DC bipolar
 24VAC/DC unipolar (bei DC-Betrieb Polarität beachten)
 Anschluss: Flachstecker 2,8x0,8 mm
 Einbauöffnung: Ø27+0,2 mm

Specification






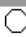
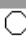


*Jumbo LED Ø20 mm with mounting clip for screw fastening, matt surface for good on-off contrast.
 12V AC/DC bipolar
 24VAC/DC unipolar (with DC operation, note polarity)
 Connection: Tab terminal 2.8x0.8 mm
 Mounting-hole:Ø27+0,2 mm*

Materialien		Material	
Teil	Material	Part	Material
LED-Look-Kappe	Polycarbonat	LED-Look-Lense	Polycarbonate
Gehäuse	Nylon 66 RV	Housing	Nylon 66 RV
Anschluss	Flachstecker 2,8x0,8x15mm Messing blank	Connection	Tab terminal 2,8x0,8x15mm brass bright

Betriebstemperatur	-30°C/+80°C	Operation Temperature	-30°C/+80°C
Lagertemperatur	-40°C/+85°C	Storage Temperature	-40°C/+85°C

Optionen		Options	
Auch als 2-farb Version in rot/grün lieferbar 858-LEC20224		Also as 2-colour typ red/green available 858-LEC20224	
Jumbo LED LDC20224 Ø20mm 24V DC mit Montageclip		Jumbo LED LDC20224 Ø20mm 24V DC with mounting clip	

Artikel/ Part		Artikel-Text			Part-Text		
Spannung Voltage	Farbe Color	Lichtstärke Luminous intensity	Vollwinkel Viewing Angle	Lichtstrom luminous flux	Strom Current	Leistung Power	Lebensdauer live-time
LDC20022 LEDØ20 ROT 12VAD Flst Clip							
12 V	● red rot	250 mcd/ 20,000 mA	160°	lm	17 mA	204 mW	50000 h

Artikel/ Part		Artikel-Text			Part-Text			
Spannung Voltage	Farbe Color	Lichtstärke Luminous intensity	Vollwinkel Viewing Angle	Lichtstrom luminous flux	Strom Current	Leistung Power	Lebensdauer live-time	
LDC20024 LEDØ20 ROT 24VAD Flst Clip								
24 V	 red rot	250 mcd/ 20,000 mA	160°	lm	15 mA	360 mW	50000 h	
LDC20122 LEDØ20 GELB 12VAD Flst Clip								
12 V	 yellow gelb	250 mcd/ 20,000 mA	160°	lm	17 mA	204 mW	50000 h	
LDC20124 LEDØ20 GELB 24VAD Flst Clip								
24 V	 yellow gelb	250 mcd/ 20,000 mA	160°	lm	15 mA	360 mW	50000 h	
LDC20422 LEDØ20 BLAU 12VAD Flst Clip								
12 V	 blue blau	200 mcd/ 20,000 mA	160°	lm	45 mA	540 mW	50000 h	
LDC20424 LEDØ20 BLAU 24VAD Flst Clip								
24 V	 blue blau	200 mcd/ 20,000 mA	160°	lm	15 mA	360 mW	50000 h	
LDC20622 LEDØ20 WEISS 12VAD Flst Clip								
12 V	 white weiss	600 mcd/ 20,000 mA	160°	lm	45 mA	540 mW	50000 h	
LDC20624 LEDØ20 WEISS 24VAD Flst Clip								
24 V	 white weiss	600 mcd/ 20,000 mA	160°	lm	15 mA	360 mW	50000 h	
LDC20722 LEDØ20 UGRÜN 12VAD Flst Clip								
12 V	 green grün	700 mcd/ 20,000 mA	160°	lm	45 mA	540 mW	50000 h	
LDC20724 LEDØ20 UGRÜN 24VAD Flst Clip								
24 V	 green grün	700 mcd/ 20,000 mA	160°	lm	15 mA	360 mW	50000 h	

Layout FPI

Technische Änderungen vorbehalten. Datenblatt unterliegt nicht dem Änderungsdienst.

Die angegebenen technischen Daten sind typische Durchschnittswerte.

Wir achten bei der Entwicklung und Herstellung und beim Energieverbrauch unserer Produkte auf einen möglichst geringen Einsatz von Ressourcen.

Bitte prüfen Sie, ob es unbedingt erforderlich ist, das gesamte Dokument zu Drucken. So schonen Sie Ressourcen und unsere Umwelt.

Specifications are subject to change without notice.

The technical data are typical figures

We care for environment when producing and manufacturing our products. Also we care for a low power consumption and a low consumption of resources.

Please consider environmental responsibility before printing this e-mail