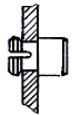


Transparente Leuchtkappen für LED-Montage

Transparent Lenses for LED-Mounting

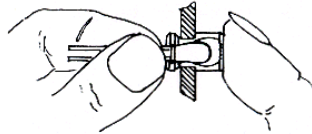
Merkmale „CLIPLITE“	Features „CLIPLITE“
<ul style="list-style-type: none"> ● Vergrößert den Betrachtungswinkel bis zu 180° ● Erlaubt den Einsatz heller LED's mit kleinem Abstrahlwinkel ● Schützt IC's vor elektrostatischen Entladungen (16 kV) ● Optimale Farbanpassung an LED's 	<ul style="list-style-type: none"> ● Increases the viewing angle up to 180° ● Allows the use of bright narrow beam LED's ● Protects IC's from electrostatic discharge (16 kV) ● Optimum Colour matching to LED's

Montage



① **CLIPLITE** in Frontplattenbohrung einschnappen.
Snap **CLIPLITE** into front panel.

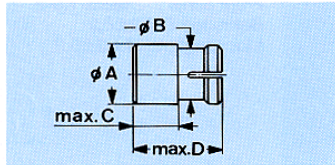
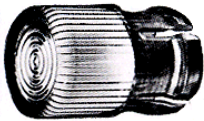
Mounting



② Während man **CLIPLITE** mit dem Finger festhält, wird von hinten die LED eingesetzt.
While holding the **CLIPLITE** with your fingers, insert the LED from the back.

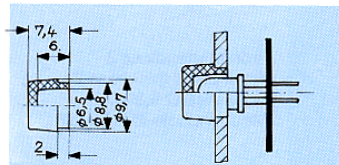
CLIPLITE

T1 Frontplattenstärke / Panel thickness: 0,8 ... 1,6 mm
Montagebohrung / Panel hole: ø 4,4 mm



T1¼ Frontplattenstärke / Panel thickness: 1,5 ... 3 mm
Montagebohrung / Panel hole: ø 6,35 mm

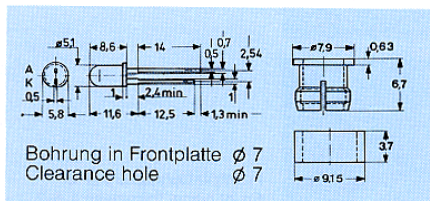
	ø A (mm)	ø B (mm)	C	D	Farbe Colour	Art.-Nr.
Für LED ø 3 mm For T1 LED	4,85	4,35	3,7	7,25	Rot/Red	2671.8022
					Gelb/Yellow	2671.8072
					Grün/Green	2671.8082
Für LED ø 5 mm For T1¼ LED	7,1	6,35	5,5	11	Klar/Clear	2671.8001
					Rot/Red	2671.8021
					Gelb/Yellow	2671.8071
					Grün/Green	2671.8081



Leuchtkappe für Klebmontage Lens for Adhesive Mounting

Frontplattenbohrung
Front Panel hole
ø 9 mm

Rot/Red	2675.0821
Gelb/Yellow	2675.0871
Grün/Green	2675.0881



A5	Rot/Red	2666.8021
A7	Gelb/Yellow	2666.8071
A8	Grün/Green	2666.8081