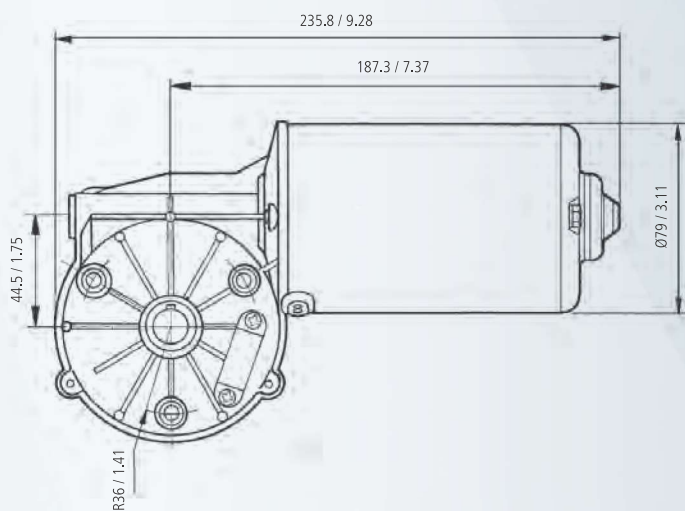
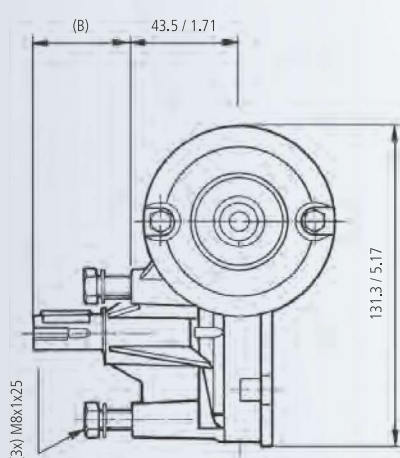


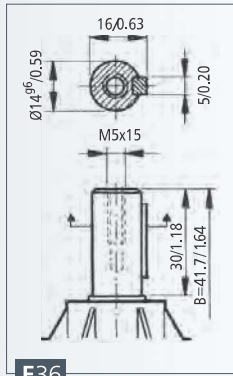
MOTOR FEATURES

| REFERENCE NUMBER REFERENCIA REFERENZNUMMERN | NOMINAL VOLTAGE TENSION NOMINALE NENNSPANNUNG | NOMINAL TORQUE PAR NOMINAL COUPLE NOMINAL DREHMOMENT NOMINAL | NOMINAL SPEED VELOCIDAD NOMINAL VITESSE NOMINALE GESCHWINDIGKEIT NOMINAL | NOMINAL CURRENT CORRIENTE NOMINAL COURANT NOMINAL NOMINALSTROM | STARTING TORQUE PAR DE ARRANQUE COUPLE DE DEARRAGE ANZUGSDREHMOMENT | STARTING CURRENT CORRIENTE DE ARRANQUE COURANT DE DEARRAGE ANLAUFSTROM | SHAFT EJE ABBE WELLE | CONNECTIONS CONEXIONES CONNEXIONS ANSCHLUSSART | WIRING DIAGRAM ESQUEMA ELECTRICO SCHEMA ELECTRIQUE SCHALTBILD | TRANSMISSION RATIO RELACION DE REDUCCION RAPPORT DE REDUCTEUR UNTERSETZUNG | APPROXIMATE WEIGHT PESO APROXIMADO POIDS APPROXIMATIF GEWICHT (ca.) | WATERTIGHTNESS GRADO DE ESTANQUEIDAD ETANCHEITE FEUCHTIGKEITSSCHUTZKLASSE | WHEEL MATERIAL MATERIAL RUEDA MATERIAU ROUE MAT. DES SCHNECKENRADES | CURVE CURVA COURBE KURVE |
|---|---|---|---|---|--|---|-------------------------------|---|--|---|--|--|--|-----------------------------------|
| | Un (V) | Mn (N.m./lbf.in) | nn (r.p.m.) | In (A) | Ma (N.m./lbf.in) | Ia (A) | | | | i | P (kg/lb) | IP | | |
| 25817102000 | 12 | 15 / 133 | 25 | 10 | 80 / 708 | 42 | E36 | C34 | F2 | 52:1 | 3.00 / 6.61 | IP53 | PLA | 18 |
| 25817103000 | 24 | 15 / 133 | 25 | 5 | 80 / 708 | 21 | E36 | C34 | F2 | 52:1 | 3.00 / 6.61 | IP53 | PLA | 18 |
| 25837102000 | 12 | 15 / 133 | 25 | 10 | 80 / 708 | 42 | E36 | C34 | EE2 | 52:1 | 3.00 / 6.61 | IP53 | PLA | 18 |
| 25837103000 | 24 | 15 / 133 | 25 | 5 | 80 / 708 | 21 | E36 | C34 | EE2 | 52:1 | 3.00 / 6.61 | IP53 | PLA | 18 |
| 25837122000 | 12 | 12 / 106 | 40 | 12 | 80 / 708 | 55 | E36 | C34 | EE2 | 52:1 | 3.00 / 6.61 | IP53 | PLA | 19 |
| 25837123000 | 24 | 12 / 106 | 40 | 6 | 80 / 708 | 32 | E36 | C34 | EE2 | 52:1 | 3.00 / 6.61 | IP53 | PLA | 19 |
| 25890262000 | 12 | 12 / 106 | 40 | 12 | 80 / 708 | 55 | E36 | C34 | EE2 | 52:1 | 3.00 / 6.61 | IP53 | CEL | 19 |
| 25890263000 | 24 | 12 / 106 | 40 | 6 | 80 / 708 | 32 | E36 | C34 | EE2 | 52:1 | 3.00 / 6.61 | IP53 | CEL | 19 |



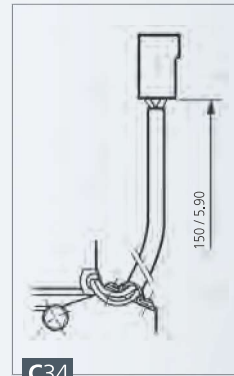
mm / inch

SHAFT EJE ARBRE WELLE



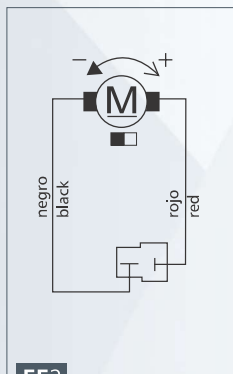
E36

CONNECTIONS **CONEXIONES** CONNEXIONS ANSCHLUSSART

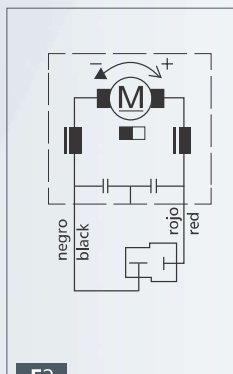


C34

WIRING DIAGRAM **ESQUEMA ELÉCTRICO** SCHEMA ÉLECTRIQUE SCHALTBIID

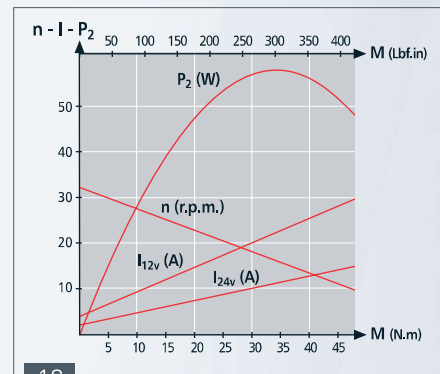


EE2

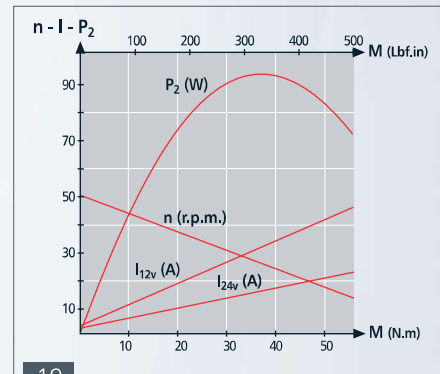


F2

CURVES **CURVAS** COURBES KURVEN



18



19