

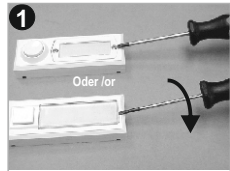
# Klingeltaster / Push button Combifix

## Installation

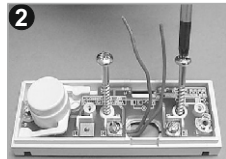


**D** Montage muss im spannungslosen Zustand durch eine Elektrofachkraft erfolgen!

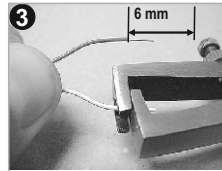
**GB** Installation must be carried out in deenergized condition by an electrical!



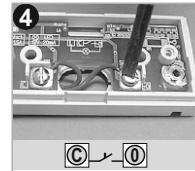
**1**  
Gehäuse öffnen  
Open the casing



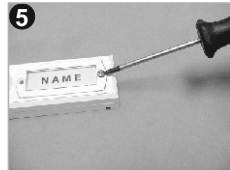
**2**  
Festschrauben (Dist. 32mm)  
Wall fixation (Dist. 32mm)



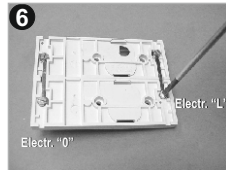
**3**  
Drähte abisolieren (6mm)  
Strip the wires (6mm)



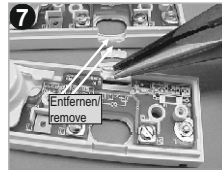
**4**  
Drähte anschließen  
Connect wires



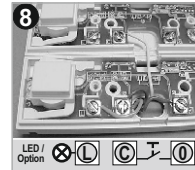
**5**  
Namensschild einlegen, schließen  
Insert name plate, close cover



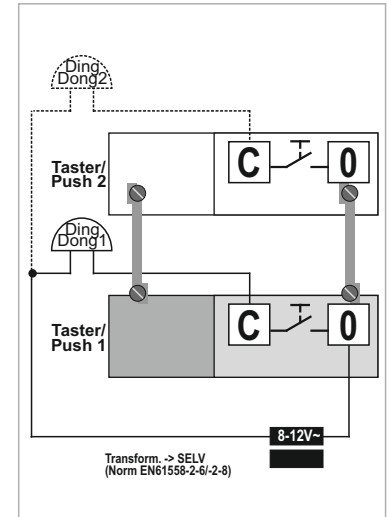
**6**  
Anruehrung mehrerer Taster  
Combinat. several pushes



**7**  
2 Stege im Unterteil entfernen.  
Remove 2 ribs in the base



**8**  
Drähte anschließen etc.  
Connect wires etc.



## Technische Daten / Technical data

\* 8 - 12 V ~ (AC 5 mA - 1,5 A)

\* 8 - 12 V = (DC 5 mA - 1,0 A)

\* Nur Schutzkleinspannung! Protect. low volt. only!

\* Leiter/Wire 0,6 - 0,8 mm

\* -20°C...60°C

\* IP41

\* Druckkraft/Op. force ca. 6 N



Grothe GmbH  
Löhestraße 22  
53773 Hennef  
service@grothe.de

**GROTHE**  
URMET|GROUP