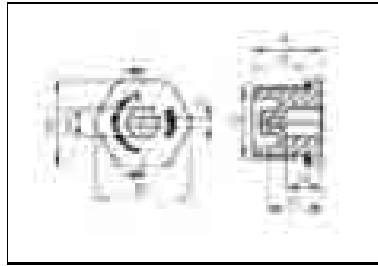


ATEX stop ends, metric

ATEX Verschlusschrauben, metrisch



Explosion protection: II 2 G Ex e II

II 2 D Ex tD A21 IP68

Certificates: PTB 06 ATEX 1032 X

Protection class to EN 60 529: IP 68

Temperature range: -20°C to +75°C

Material: Screw: polyamide; gasket: EPDM

Equipment: Ex e polyamide stop end, for secure closing of unused threaded holes or through holes, with self-loosening protection

Suitable for: Explosion endangered areas

Explosionsschutz: II 2 G Ex e II

II 2 D Ex tD A21 IP68

Bescheinigungen: PTB 06 ATEX 1032 X






Schutzart gemäß EN 60 529: IP68

Einsatztemperatur: -40°C bis +75°C

Material: Schraube: Polyamid; O-Ring: EPDM

Ausstattung: Ex e Kunststoff-Verschlusschraube zum Abdichten nicht benutzter Einführungen mit Selbstlockerungsschutz

Einsatzbereich: Explosionsgefährdete Bereiche

Type	WISKA-No. RAL 9005 ■ 100.		 mm	 mm	 mm	 mm	TL mm
EX-EVSG 12	65300	100	M 12x1,5	15	16	6	19
EX-EVSG 16	65301	100	M 16x1,5	15	20	8	19
EX-EVSG 20	65302	100	M 20x1,5	15	24	8	19
EX-EVSG 25	65303	100	M 25x1,5	15	29	8	20
EX-EVSG 32	65304	50	M 32x1,5	15	36	8	20
EX-EVSG 40	65305	30	M 40x1,5	15	46	8	20
EX-EVSG 50	65306	30	M 50x1,5	15	55	8	20
EX-EVSG 63	65307	30	M 63x1,5	15	68	8	20
EX-EVSG 75	65308	30	M 75x1,5	15	82	8	20

KUNSTSTOFF PLASTIC
 MEMBRAN MEMBRANE
 MESSING BRASS
 DIN 89280
 EDELSTAHL STAINL. STEEL
 EMV EMC
 ATEX ATEX
 Vent gl. AND
 DICHTUNGEN SEALINGS
 WERKZEUGE TOOLS
 TECHNIK TECHNICS
 INDEX INDEX