



Rohrkabelschuhe ohne Isolation

Cosses à sertir en tube

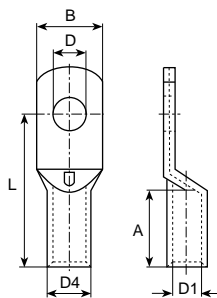
Uninsulated tube terminals

Werkstoff:
E-CU sn = Elektrolytkupfer verzinkt

Matière:
E-CU sn = cuivre électrolytique étamé

Material:
E-CU sn = tin-plated electrolytic copper

Bestellbeispiel:
Exemple de commande:
Example of order:
3392A



| mm ² (AWG) | für Bolzen pour borne for stud | Artikel-Nr. Numéro d'article Part-No. | øD mm | øD1 mm | B mm | L mm | A mm | øD4 mm | Stand.- Packg. | Werkzeuge Outils Tools |
|----------------------------|--------------------------------------|---|--------------|-----------|---------|---------|---------|-----------|-------------------|---|
| 0,5-0,75 (22-20) | M3 | 3392A | 3.2 | 1.3 | 6 | 12 | 6 | 2.8 | 500 | 3979 3980 3984E / 3997 |
| | M3.5 | 3393A | 3.7 | 1.3 | 6 | 12 | 6 | 2.8 | 500 | |
| | M4 | 3394A | 4.3 | 1.3 | 6.5 | 13 | 6 | 2.8 | 500 | |
| | M5 | 3396A | 5.3 | 1.3 | 7.5 | 14 | 6 | 2.8 | 500 | |
| 1-1,5 (18-16) | M3 | 3397A | 3.2 | 1.8 | 6.5 | 12 | 6 | 3.3 | 500 | |
| | M4 | 3398A | 4.3 | 1.8 | 6.5 | 13 | 6 | 3.3 | 500 | |
| | M5 | 3399 | 5.3 | 1.8 | 7.5 | 14 | 6 | 3.3 | 500 | |
| | M6 | 3400A | 6.5 | 1.8 | 9 | 16 | 6 | 3.3 | 500 | |
| 2,5 (14) | M3.5 | 3401A | 3.7 | 2.3 | 7.5 | 13 | 6 | 4.2 | 500 | |
| | M4 | 3402A | 4.3 | 2.3 | 7.5 | 13 | 6 | 4.2 | 500 | |
| | M5 | 3403A | 5.3 | 2.3 | 8.5 | 14 | 6 | 4.2 | 500 | |
| | M6 | 3405A | 6.5 | 2.3 | 9.5 | 16 | 6 | 4.2 | 500 | |
| | M8 | 3406A | 8.5 | 2.3 | 14 | 20 | 6 | 4.2 | 500 | |
| 4 (12) | M4 | 3402B | 4.3 | 3 | 8.5 | 17 | 8 | 5 | 200 | |
| | M5 | 3403B | 5.3 | 3 | 9 | 17 | 8 | 5 | 200 | |
| | M6 | 3405B | 6.5 | 3 | 10 | 19 | 8 | 5 | 200 | |
| | M8 | 3406B | 8.5 | 3 | 14 | 22 | 8 | 5 | 200 | |
| 6 (10) | M4 | 3408A | 4.3 | 3.5 | 10 | 21 | 9 | 6.5 | 200 | |
| | M5 | 3409A | 5.5 | 3.5 | 10 | 21 | 9 | 6.5 | 200 | |
| | M6 | 3410A | 6.5 | 3.5 | 12 | 21 | 9 | 6.5 | 200 | |
| | M8 | 3411A | 8.5 | 3.5 | 14 | 23 | 9 | 6.5 | 200 | |
| | M10 | 3412A | 10.5 | 3.5 | 17 | 25 | 9 | 6.5 | 200 | |
| 10 (8) | M4 | 3414A | 4.3 | 4.5 | 12 | 22 | 10 | 7 | 100 | |
| | M5 | 3415A | 5.5 | 4.5 | 12 | 22 | 10 | 7 | 100 | |
| | M6 | 3416A | 6.5 | 4.5 | 12 | 22 | 10 | 7 | 100 | |
| | M8 | 3417A | 8.5 | 4.5 | 15 | 25 | 10 | 7 | 100 | |
| | M10 | 3418A | 10.5 | 4.5 | 17 | 27 | 10 | 7 | 100 | |
| | M12 | 3419A | 13 | 4.5 | 19 | 29 | 10 | 7 | 100 | |
| 16 (6) | M5 | 3420A | 5.5 | 5.8 | 12 | 26 | 13 | 8.5 | 100 | |
| | M6 | 3421A | 6.5 | 5.8 | 12 | 27 | 13 | 8.5 | 100 | |
| | M8 | 3422A | 8.5 | 5.8 | 15 | 29 | 13 | 8.5 | 100 | |
| | M10 | 3423A | 10.5 | 5.8 | 17 | 31 | 13 | 8.5 | 100 | |
| | M12 | 3424A | 13 | 5.8 | 19 | 33 | 13 | 8.5 | 100 | |
| | 25 (4) | M5 | 3425A | 5.5 | 7 | 14 | 30 | 15 | 10 | 100 |
| M6 | | 3426A | 6.5 | 7 | 14 | 30 | 15 | 10 | 100 | |
| M8 | | 3427A | 8.5 | 7 | 16 | 32 | 15 | 10 | 100 | |
| M10 | | 3428A | 10.5 | 7 | 18 | 34 | 15 | 10 | 100 | |
| M12 | | 3429A | 13 | 7 | 19 | 35 | 15 | 10 | 100 | |

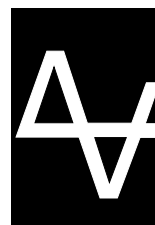


Rohrkabelschuhe ohne Isolation

Cosses à sertir en tube

Uninsulated tube terminals

| mm ² (AWG) | für Bolzen pour borne for stud | Artikel-Nr. Numéro d'article Part-No. | | øD mm | øD1 mm | B mm | L mm | A mm | øD4 mm | | Stand- Packg. | Werkzeuge Outils Tools | |
|--------------------------|--------------------------------------|---|--|----------|-----------|---------|---------|---------|-----------|--|------------------|--|--|
| 35 (2) | M5 | 3430A | | 5.5 | 8.5 | 17 | 32 | 17 | 12 | | 100 | 3982B 3982C 3982D 3982E 3982F | |
| | M6 | 3431A | | 6.5 | 8.5 | 17 | 32 | 17 | 12 | | 100 | | |
| | M8 | 3432A | | 8.5 | 8.5 | 17 | 34 | 17 | 12 | | 100 | | |
| | M10 | 3433A | | 10.5 | 8.5 | 19 | 37 | 17 | 12 | | 100 | | |
| | M12 | 3434A | | 13 | 8.5 | 21 | 38 | 17 | 12 | | 100 | | |
| 50 (1) | M6 | 3436A | | 6.5 | 10 | 20 | 37 | 19 | 14 | | 100 | | |
| | M8 | 3437A | | 8.5 | 10 | 20 | 37 | 19 | 14 | | 100 | | |
| | M10 | 3438A | | 10.5 | 10 | 20 | 39 | 19 | 14 | | 100 | | |
| | M12 | 3439A | | 13 | 10 | 23 | 43 | 19 | 14 | | 100 | | |
| | M14 | 3440A | | 15 | 10 | 23 | 45 | 19 | 14 | | 100 | | |
| | M16 | 3441A | | 17 | 10 | 28 | 46 | 19 | 14 | | 100 | | |
| 70 (2/0) | M6 | 3444A | | 6.5 | 12 | 23 | 40 | 21 | 16.5 | | 100 | | 3982B 3982C 3982D 3982F 3982G |
| | M8 | 3445A | | 8.5 | 12 | 23 | 43 | 21 | 16.5 | | 100 | | |
| | M10 | 3446A | | 10.5 | 12 | 23 | 44 | 21 | 16.5 | | 100 | | |
| | M12 | 3447A | | 13 | 12 | 23 | 46 | 21 | 16.5 | | 100 | | |
| | M14 | 3448A | | 15 | 12 | 23 | 48 | 21 | 16.5 | | 100 | | |
| | M16 | 3449A | | 17 | 12 | 28 | 50 | 21 | 16.5 | | 100 | | |
| 95 (3/0) | M8 | 3457A | | 8.5 | 13.5 | 26 | 48 | 25 | 18 | | 50 | 3982C 3982D 3982F 3982G | |
| | M10 | 3458A | | 10.5 | 13.5 | 26 | 48 | 25 | 18 | | 50 | | |
| | M12 | 3459A | | 13 | 13.5 | 26 | 49 | 25 | 18 | | 50 | | |
| | M14 | 3460A | | 15 | 13.5 | 26 | 51 | 25 | 18 | | 50 | | |
| | M16 | 3461A | | 17 | 13.5 | 28 | 54 | 25 | 18 | | 50 | | |
| 120 (250 MCM) | M8 | 3463A | | 8.5 | 15 | 28 | 51 | 26 | 19.5 | | 20 | 3982C 3982D 3982G | |
| | M10 | 3464A | | 10.5 | 15 | 28 | 51 | 26 | 19.5 | | 20 | | |
| | M12 | 3465A | | 13 | 15 | 28 | 51 | 26 | 19.5 | | 20 | | |
| | M14 | 3466A | | 15 | 15 | 28 | 52 | 26 | 19.5 | | 20 | | |
| | M16 | 3467A | | 17 | 15 | 30 | 54 | 26 | 19.5 | | 20 | | |
| | M20 | 3468A | | 21 | 15 | 36 | 63 | 26 | 19.5 | | 20 | | |
| 150 (300 MCM) | M10 | 3470A | | 10.5 | 16.5 | 31 | 56 | 30 | 21 | | 20 | | |
| | M12 | 3471A | | 13 | 16.5 | 31 | 57 | 30 | 21 | | 20 | | |
| | M14 | 3472A | | 15 | 16.5 | 31 | 57 | 30 | 21 | | 20 | | |
| | M16 | 3473A | | 17 | 16.5 | 31 | 58 | 30 | 21 | | 20 | | |
| | M20 | 3474A | | 21 | 16.5 | 36 | 66 | 30 | 21 | | 20 | | |
| 185 (350 MCM) | M10 | 3480A | | 10.5 | 19 | 35 | 65 | 30 | 24 | | 10 | | 3982C 3982D |
| | M12 | 3481A | | 13 | 19 | 35 | 65 | 30 | 24 | | 10 | | |
| | M14 | 3482A | | 15 | 19 | 35 | 65 | 30 | 24 | | 10 | | |
| | M16 | 3483A | | 17 | 19 | 35 | 65 | 30 | 24 | | 10 | | |
| | M20 | 3484A | | 21 | 19 | 39 | 69 | 30 | 24 | | 10 | | |
| 240 (400 MCM) | M12 | 3486A | | 13 | 21 | 39 | 72 | 35 | 26 | | 10 | 3982D | |
| | M14 | 3487A | | 15 | 21 | 39 | 72 | 35 | 26 | | 10 | | |
| | M16 | 3488A | | 17 | 21 | 39 | 72 | 35 | 26 | | 10 | | |
| | M20 | 3489A | | 21 | 21 | 39 | 72 | 35 | 26 | | 10 | | |
| 300 (500 MCM) | M12 | 34891A | | 13 | 23.5 | 43 | 87 | 44 | 29.5 | | 10 | | |
| | M14 | 34892A | | 15 | 23.5 | 43 | 87 | 44 | 29.5 | | 10 | | |
| | M16 | 34893A | | 17 | 23.5 | 43 | 87 | 44 | 29.5 | | 10 | | |
| | M20 | 34894A | | 21 | 23.5 | 43 | 87 | 44 | 29.5 | | 10 | | |
| 400 (600 MCM) | M12 | 34896A | | 13 | 27 | 49 | 90 | 44 | 34 | | 10 | | |
| | M14 | 34897A | | 15 | 27 | 49 | 90 | 44 | 34 | | 10 | | |
| | M16 | 34898A | | 17 | 27 | 49 | 90 | 44 | 34 | | 10 | | |
| | M20 | 34899A | | 21 | 27 | 49 | 90 | 44 | 34 | | 10 | | |



Eigenschaften der Isolierhülsen

Polyamid (Nylon)

Beständig gegen stark wechselnde Belastungen und Temperaturen -55°C bis +105°C, Korrosion und Vibration.

Durchschlagfestigkeit:
3000 Volt, 50 Hz, bzw.
2000 Volt, 400 Hz.

Unempfindlich gegen Alkohol, Hydrauliköl, Schmieröl, Hydraulikflüssigkeit auf Ester-Basis, Düsentreibstoff, Chlorbrommethan, Clophen, Trafoöl, Salznebel, Pilzbildung etc.

Die Isolierhülsen haben eine Kennfarbe, die den Querschnittsbereich bezeichnet. Zur richtigen Verwendung haben die Ansetzgerätee die gleiche Kennfarbe.

PVC

Beständig bei Temperaturen von -10°C bis +75°C.

Durchschlagfestigkeit:
3000 Volt, 50 Hz, bzw.
2000 Volt, 400 Hz.

Unempfindlich gegen Mineralöle, Paraffin, Petroleum, Seewasser, Fixiersalz, Akkusäure, Natronlauge, Salzsäure.

Die Isolierhülsen haben eine Kennfarbe, die den Querschnittsbereich bezeichnet. Zur richtigen Verwendung haben die Ansetzgerätee die gleiche Kennfarbe.

Caractéristiques des manchons isolants

Polyamide (nylon)

Ils sont insensibles aux variations importantes et rapides du courant et de la température -50°C à +105°C, à la corrosion et aux vibrations.

Très bonne résistance diélectrique:
3000 Volts, 50 périodes et
2000 Volts, 400 périodes.

Résistent à l'alcool, aux huiles, aux liquides à base d'ester, aux carburants d'avion, au chlorobromure de méthane, au clophène, aux huiles de transformateurs, au brouillard salin, à la formation de moisissures, etc.

Les manchons isolants ont une couleur distinctive qui indique la section. Pour permettre une utilisation correcte, les pinces ont les mêmes repères.

PVC

Ils sont insensibles aux variations de température entre -10°C à +75°C.

Résistance diélectrique:
3000 Volts, 50 périodes ou
2000 Volts, 400 périodes.

Résistent aux huiles minérales, paraffine, pétrole, eau de mer, fixateurs, acide pour accumulateurs, soude caustique, acide chlorhydrique.

Les manchons isolants ont une couleur distinctive qui indique la section. Pour permettre une utilisation correcte, les pinces ont les mêmes repères.

Qualities of insulation sleeves

Polyamid (nylon)

Resistant to wide variations in load and temperature -55°C up to +105°C, corrosion and vibration.

High dielectric strength:
3000 Volts, 50 c/sec. or
2000 Volts, 400 c/sec.

Chemically resistant to alcohol, hydraulic oils, lubricating oils, hydraulic fluids on ester basis, kerosene, methane chlorobromide, clophene, transformer oil, salt spray, fungus etc.

The insulating sleeves are colour coded according to the wire section range. To avoid confusion, the crimping tools are correspondingly colour coded.

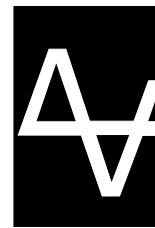
PVC

Temperature range:
-10°C up to +75°C.

Dielectric strength:
3000 Volts, 50 c/sec. or
2000 Volts, 400 c/sec.

Chemically resistant to mineral oils, kerosene, methylated spirit, sea water, fixing salt, battery acid, caustic soda, hydrochloric acid.

The insulation sleeves are colour coded to identify the wire size. To ensure a correct crimp connection the crimping tools bear the same colour code.



Rohrkabelschuhe mit Polyamid- Isolation

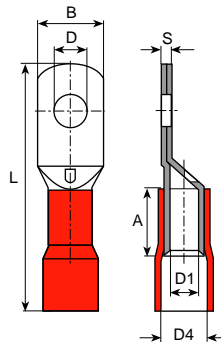
Cosses à sertir en tube avec isolation en polyamide

Tube terminals with polyamid insulation

Werkstoff:
 E-CU sn = Elektrolytkupfer verzinkt
 Temperaturbeständigkeit:
 -55°C bis +105°C

Bestellbeispiel:
Exemple de commande:
Example of order:
3350A

Matière:
 E-CU sn = cuivre électrolytique étamé
 Résistant à une température de:
 -55°C à +105°C



Material:
 E-CU sn = tin-plated electrolytic copper
 Temperature range:
 -55°C up to +105°C

| mm ² (AWG) | für Bolzen pour borne for stud | Farben Couleurs Colours | Artikel-Nr. Numéro d'article Part-No. | øD mm | øD1 mm | B mm | L mm | A mm | øD4 mm | S mm | Stand- Packg. | Werkzeuge Outils Tools |
|--------------------------|--------------------------------------|-------------------------------|---|----------|-----------|---------|---------|---------|-----------|---------|------------------|------------------------------|
| 10 (6) | M6 | [Red] | 3350A | 6.1 | 4.8 | 10 | 42 | 11.2 | 8.2 | 2 | 100 | 3982K 3982Q |
| | M8 | | 3351A | 8.4 | 4.8 | 12 | 42 | 11.2 | 8.2 | 2 | 100 | |
| 16 (6) | M6 | [Blue] | 3355A | 6.3 | 6 | 11.5 | 44 | 11.6 | 10 | 2 | 100 | |
| | M8 | | 3356A | 8.4 | 6 | 11.5 | 44 | 11.6 | 10 | 2 | 100 | |
| | M10 | | 3357A | 10.5 | 6 | 13 | 49 | 12.6 | 10 | 2 | 100 | |
| 25 (4) | M6 | [Yellow] | 3360A | 6.3 | 7 | 14 | 50 | 13.5 | 11.5 | 2.4 | 100 | |
| | M8 | | 3361A | 8.4 | 7 | 14 | 50 | 13.5 | 11.5 | 2.4 | 100 | |
| | M10 | | 3362A | 10.5 | 7 | 18.5 | 51 | 17 | 11.5 | 2.4 | 100 | |
| 35 (2) | M8 | [Red] | 3366A | 8.4 | 9 | 17 | 59 | 13 | 14 | 2.5 | 100 | |
| | M10 | | 3367A | 10.5 | 9 | 17 | 59 | 13 | 14 | 2.5 | 100 | |
| | M12 | | 3368A | 12.5 | 9 | 20 | 64 | 14 | 14 | 2.5 | 100 | |
| 50 (1) | M8 | [White] | 3371A | 8.4 | 10 | 19 | 65 | 15 | 15.5 | 3 | 100 | |
| | M10 | | 3372A | 10.5 | 10 | 19 | 65 | 15 | 15.5 | 3 | 100 | |
| | M12 | | 3373A | 12.5 | 10 | 21 | 70 | 16 | 15.5 | 3 | 100 | |
| | M14 | | 3374A | 14.5 | 10 | 22 | 70 | 16 | 15.5 | 3 | 50 | |
| 70 (2/0) | M10 | [Blue] | 3378A | 10.5 | 12 | 22 | 75 | 19 | 22 | 3 | 50 | |
| | M12 | | 3379A | 12.5 | 12 | 22 | 75 | 19 | 22 | 3 | 50 | |
| | M14 | | 3380A | 14.5 | 12 | 22 | 75 | 19 | 22 | 3 | 50 | |
| | M16 | | 3381A | 16.5 | 12 | 22 | 75 | 19 | 22 | 3 | 50 | |
| 95 (3/0) | M10 | [White] | 3383A | 10.5 | 13.8 | 25 | 88 | 21 | 26 | 3 | 50 | |
| | M12 | | 3384A | 12.5 | 13.8 | 25 | 88 | 21 | 26 | 3 | 50 | |
| | M14 | | 3385A | 14.5 | 13.8 | 25 | 90 | 21 | 26 | 3 | 50 | |
| | M16 | | 3386A | 16.5 | 13.8 | 25 | 91 | 21 | 26 | 3 | 50 | |
| 120 (250 MCM) | M10 | [Red] | 3389A | 10.5 | 15 | 28 | 97 | 24 | 27 | 4 | 25 | |
| | M12 | | 3390A | 12.5 | 15 | 28 | 97 | 24 | 27 | 4 | 25 | |
| | M14 | | 3395A | 14.5 | 15 | 28 | 97 | 24 | 27 | 4 | 25 | |
| | M16 | | 3399A | 16.5 | 15 | 28 | 97 | 24 | 27 | 4 | 25 | |
| 150 (300 MCM) | M12 | [Blue] | 3435A | 12.5 | 17 | 31 | 106 | 28 | 29 | 4.5 | 25 | |
| | M16 | | 3442A | 16.5 | 17 | 31 | 107 | 28 | 29 | 4.5 | 25 | |
| | M20 | | 3443A | 21 | 17 | 31 | 107 | 28 | 29 | 4.5 | 25 | |
| 185 (350 MCM) | M14 | [Red] | 3451A | 14.5 | 19 | 36 | 116 | 30 | 32 | 6 | 25 | |
| | M16 | | 3454A | 16.5 | 19 | 36 | 116 | 30 | 32 | 6 | 25 | |
| | M20 | | 3455A | 21 | 19 | 36 | 116 | 30 | 32 | 6 | 25 | |