

Lötfreie Kabelschuhe ohne Isolation

DIN 46234, ausgenommen*

Cosses à sertir sans isolation

DIN 46234, excepté*

Uninsulated solderless terminals

DIN 46234, except*

Werkstoff:
E-CU sn = Elektrolytkupfer verzinkt

Matière:
E-CU sn = cuivre électrolytique étamé

Material:
E-CU sn = tin-plated electrolytic copper

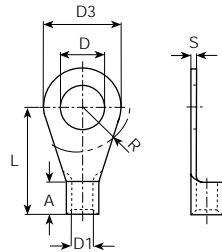
Temperaturbeständigkeit:
bis +125°C

Résistant à une température:
jusqu'à +125°C

Temperature range:
up to +125°C

Bestellbeispiel:
Exemple de commande:
Example of order:

3490A



UL- No. E235797

| mm ² (AWG) | für Bolzen pour borne for stud | Artikel-Nr. Numéro d'article Part-No. | DIN 46 234 | øD mm | øD1 mm | øD3 mm | L mm | A mm | R mm | S mm | Stand- Packg. | Werkzeuge Outils Tools |
|--------------------------|--------------------------------------|---|---------------|----------|-----------|-----------|---------|---------|---------|---------|------------------|------------------------------|
| 0.1-0.5 (26-22) | M2 | 3490A | 2 - 0.5 | 2.2 | 1 | 5 | 10 | 4 | 4 | 0.5 | 2000 | 3975D |
| | M2.5 | 3491A | 2.5 - 0.5 | 2.7 | 1 | 5 | 10 | 4 | 4 | 0.5 | 2000 | |
| | M3 | 3492A | 3 - 0.5 | 3.2 | 1 | 5 | 10 | 4 | 4.5 | 0.5 | 2000 | |
| | M3.5 | 3493A | 3.5 - 0.5 | 3.7 | 1 | 6 | 12 | 4 | 4.5 | 0.5 | 2000 | |
| | M4 | 3494A | 4 - 0.5 | 4.3 | 1 | 6.5 | 12 | 4 | 6 | 0.5 | 2000 | |
| | M5 | 3496A | 5 - 0.5 | 5.3 | 1 | 8 | 12 | 4 | 6.5 | 0.5 | 2000 | |
| 0.5-1 (22-18) | M2 | 3500A | * | 2.2 | 1.6 | 6 | 11 | 5 | 4.5 | 0.8 | 2000 | 3975D 3980N 3984E |
| | M2.5 | 3501A | 2.5 - 1 | 2.7 | 1.6 | 6 | 11 | 5 | 4 | 0.8 | 2000 | |
| | M3 | 3502A | 3 - 1 | 3.2 | 1.6 | 6 | 11 | 5 | 4.5 | 0.8 | 2000 | |
| | M3 | 3503A | * | 3.2 | 1.6 | 5.5 | 10 | 4.8 | 3.5 | 0.8 | 2000 | |
| | M3.5 | 3504A | 3.5 - 1 | 3.7 | 1.6 | 6 | 11 | 5 | 4.5 | 0.8 | 2000 | |
| | M3.5 | 3505A | * | 3.7 | 1.6 | 6.5 | 11 | 4.8 | 3.5 | 0.8 | 2000 | |
| | M4 | 3506A | * | 4.3 | 1.6 | 6.5 | 11 | 4 | 3.5 | 0.8 | 2000 | |
| | M4 | 3507A | * | 4.3 | 1.6 | 7 | 11.5 | 5 | 5.5 | 0.8 | 1000 | |
| | M4 | 3508A | 4 - 1 | 4.3 | 1.6 | 8 | 12 | 5 | 6 | 0.8 | 1000 | |
| | M5 | 3509A | * | 5.3 | 1.6 | 8 | 12.5 | 5 | 6 | 0.8 | 1000 | |
| | M5 | 3510A | 5 - 1 | 5.3 | 1.6 | 10 | 13 | 5 | 6.5 | 0.8 | 1000 | |
| | M6 | 3512A | * | 6.4 | 1.6 | 10 | 13 | 5 | 6.5 | 0.8 | 1000 | |
| | M6 | 3513A | * | 6.4 | 1.6 | 11 | 15 | 5 | 10 | 0.8 | 500 | |
| M8 | 3514A | * | 8.4 | 1.6 | 14 | 17 | 5 | 10 | 0.8 | 500 | | |
| 1.5-2.5 (16-14) | M3 | 3515A | 3 - 2.5 | 3.2 | 2.3 | 6 | 11 | 5 | 4.5 | 0.8 | 1000 | 3980N 3982E 3984F |
| | M3.5 | 3516A | 3.5 - 2.5 | 3.7 | 2.3 | 6 | 11 | 5 | 4.5 | 0.8 | 1000 | |
| | M3.5 | 3517A | * | 3.7 | 2.3 | 6.6 | 11 | 5 | 4.5 | 0.8 | 1000 | |
| | M4 | 3518A | * | 4.3 | 2.3 | 6.8 | 11.6 | 5 | 4.5 | 0.8 | 1000 | |
| | M4 | 3519A | 4 - 2.5 | 4.3 | 2.3 | 8 | 12 | 5 | 6 | 0.8 | 1000 | |
| | M5 | 3520A | * | 5.3 | 2.3 | 8 | 13.5 | 5 | 6 | 0.8 | 1000 | |
| | M5 | 3521A | 5 - 2.5 | 5.3 | 2.3 | 10 | 14 | 5 | 6.5 | 0.8 | 1000 | |
| | M6 | 3522A | * | 6.4 | 2.3 | 12 | 16 | 5 | 6.5 | 0.8 | 1000 | |
| | M6 | 3523A | 6 - 2.5 | 6.5 | 2.3 | 11 | 16 | 5 | 7.5 | 0.8 | 1000 | |
| | M8 | 3525A | 8 - 2.5 | 8.4 | 2.3 | 14 | 17 | 5 | 10 | 0.8 | 500 | |
| | M10 | 3527A | * | 10.5 | 2.3 | 18 | 18.5 | 5 | 12 | 0.8 | 500 | |
| | M12 | 3528A | * | 13 | 2.3 | 18 | 20 | 5 | 12 | 0.8 | 500 | |
| M16 | 3529A | * | 17.2 | 2.3 | 27 | 26 | 5 | 16 | 0.8 | 500 | | |
| 4-6 (12-10) | M4 | 3530A | 4 - 6 | 4.3 | 3.6 | 8 | 14 | 6 | 6 | 1 | 500 | 3980N 3982E 3984F |
| | M5 | 3532A | 5 - 6 | 5.3 | 3.6 | 10 | 15 | 6 | 6.5 | 1 | 500 | |
| | M6 | 3534A | 6 - 6 | 6.5 | 3.6 | 11 | 16 | 6 | 7.5 | 1 | 500 | |
| | M8 | 3538A | 8 - 6 | 8.4 | 3.6 | 14 | 19 | 6 | 10 | 1 | 200 | |
| | M10 | 3540A | 10 - 6 | 10.5 | 3.6 | 18 | 21 | 6 | 12 | 1 | 200 | |
| | M12 | 3542A | * | 13 | 3.6 | 18 | 21 | 6 | 18 | 1 | 200 | |

Wie sind die Vogt-UL-Nummern im Internet zu finden:

1. www.ul.com
2. auf "online tools" klicken
3. auf "Certifications Directory" klicken
4. auf "UL File Number" klicken
5. UL-Nummer eingeben Beispiel E235796

| Vogt Art.-Nr. | Cat-Art.-Nr. | UL Nr. | Conrad Art.-Nr. |
|---------------|----------------------|-------------|-----------------|
| 3699 | PNT (0.5) | E235797 | 730118 |
| 3700 | DPNT (1) | E235797 | 730119 |
| 3701 | DPNT (2.5 DIN 46341) | E235797 | 730121 |
| 3702 | DPNT (6-7) | 730125 | 730124 |
| 3703 | DPNT (10) | E235797 | 730125 |
| 3704 | DPNT (16) | E235797 | 730128 |
| 3705 | DPNT (25) | E235797 | 730129 |
| 3708 | DPNT (70) | E235797 | 730133 |
| 3710 | DPNT (120) | E235797 | 730135 |
| 3712 | PNT (180) | E235797 | 730137 |
| 3719 | BNT (0.5) | E235797 | 730141 |
| 3720 | DBNT (1) | E235797 | 730142 |
| 3721 | BNT (2) | E235797 | 730143 |
| 3722 | BNT (5) | E235797 | 730144 |
| 3723 | BNT (8) | E235797 | 730145 |
| 3724 | BNT (14) | E235797 | 730146 |
| 3725 | DBNT (25) | E235797 | 730147 |
| 3728 | BNT (70) | E235797 | 730151 |
| 3733 | PBDD 5-250 | E128651 (N) | 730158 |
| 3737 | BNYTF 5 | E235797 | 730173 |
| 3741 | PTNB 2-12 | E235797 | |
| 3742 | PTNB 5-13 | E235797 | 730383 |
| 3745 | PTNY (1-9) | E235797 | |
| 3746 | PTNYB (2-12) | E235797 | |
| 3747 | PTNYB (5-13) | E235797 | |
| 3748 | PTVB 2-13 | E96029 | 737179 |
| 3749 | PTVB 5-13 | E96029 | 737075 |
| 3933 | PBDD 5-250 | E128651 (N) | 736934 |
| 39012 | 480509F | E78964 | |
| 39022 | 480809F | E78964 | |
| 39032 | 630809F | E78966 | |
| 39052 | 480820F | E78965 | |
| 39062 | 630820F | E78967 | |
| 39072 | 630855F | E78968 | |
| 39102 | 630809M | E78970 | |
| 39612 | 480509F | E78965 | |
| 39622 | 480809F | E78965 | |
| 39642 | 480520FA | E78965 | |
| 39652 | 480820FA | E78965 | |
| 39662 | 630820FA | E78969 | |
| 3900205 | 280509F | E78965 | |
| 3900208 | 280809F | E78966 | |

| | | | |
|---------|----------------|---------|--------|
| 3960205 | 280509F | E78965 | |
| 3960208 | 280809F | E78965 | |
| 3490a | DRNB (2-0.5) | E235797 | 731589 |
| 3491a | DRNB (2.5-0.5) | E235797 | |
| 3492c | DSNB (3-0.5) | E235797 | 731602 |
| 3493a | DRNB (3.5-0.5) | E235797 | |
| 3494a | DRNB (4-0.5) | E235797 | |
| 3495c | DSNB (3-0.5) | E235797 | |
| 3496a | DRNB (5-0.5) | E235797 | |
| 3500a | DRNB (2-1) | E235797 | |
| 3501a | DRNB (2.5-1) | E235797 | |
| 3502a | DRNB (3-1) | E235797 | 731615 |
| 3502c | DSNB (3-1) | E235797 | 737156 |
| 3503a | DRNB (3.5-1) | E235797 | |
| 3504a | DRNB (3.5 -1) | E235797 | |
| 3504c | DSNB (3.5-1) | E235797 | |
| 3507a | DRNBS 4-1 | E96029 | |
| 3507c | DSNB (4-1) | E235797 | |
| 3508a | DRNB (4-1) | E235797 | 731629 |
| 3508c | DSNB 4-1 | E235797 | 737142 |
| 3509a | DRNBS 5-1 | E96029 | |
| 3510a | DRNB (5-1) | E235797 | 731643 |
| 3510c | DSNB (5-1) | E235797 | 737129 |
| 3512a | DRNB (6-1) | E235797 | |
| 3513a | DRNBL 6-1 | E96029 | |
| 3513c | DSNB (6-1) | E235797 | |
| 3514a | DRNB (8-1) | E235797 | |
| 3515a | DRNB (3-2.5) | E235797 | 731655 |
| 3515c | DSNB (3-2.5) | E235797 | 737115 |
| 3516a | DRNB (3.5-2.5) | E235797 | |
| 3517a | RNBM2-3.7 | E96029 | |
| 3517c | DSNB (3.5-2.5) | E235797 | |
| 3518a | DRNBS 4-2.5 | E96029 | |
| 3518c | DSNB (4-2.5) | E235797 | |
| 3519a | DRNB (4-2.5) | E235797 | 731667 |
| 3519c | DSNB (4-2.5) | E235797 | 737103 |
| 3520a | DRNBS 5-2.5 | E96029 | |
| 3521a | DRNB (5-2.5) | E235797 | 731687 |
| 3521c | DSNB (5-2.5) | E235797 | 737088 |
| 3522a | RNB (2-6) | E96029 | |
| 3523a | DRNB (6-2.5) | E235797 | 731695 |
| 3523c | DSNB (6-2.5) | E235797 | |
| 3525a | DRNB (8-2.5) | E235797 | |
| 3527a | DRNBL 10-2.5 | E96029 | |
| 3528a | DRNB (12-2.5) | E235797 | |
| 3530a | DRNB (4-6) | E235797 | 731708 |
| 3530c | DSNB (4-6) | E235797 | 732076 |
| 3532a | DRNB (5-6) | E235797 | 731721 |
| 3532c | DSNB (5-6) | E235797 | 737063 |
| 3534a | DRNB (6-6) | E235797 | 731735 |
| 3534c | DSNB (6-6) | E235797 | 737280 |
| 3538a | DRNB (8-6) | E235797 | |
| 3538c | DSNB (8-6) | E235797 | |

| | | | |
|---------|---------------|---------|--------|
| 3540a | DRNB (10-6) | E235797 | |
| 3542a | DRNB (12-6) | E235797 | |
| 3544a | RNBL8-4 | E96029 | |
| 3547a | DRNB (5-10) | E235797 | 731747 |
| 3547C | SNB 8-5 | E235797 | |
| 3549a | DRNB (6-10) | E235797 | 731761 |
| 3549c | SNB 8-6 | E235797 | |
| 3551a | DRNB (8-10) | E235797 | |
| 3553a | DRNB (10-10) | E235797 | |
| 3555a | DRNB (12-10) | E235797 | |
| 3560a | DRNB (5-16) | E235797 | 731775 |
| 3562a | DRNB (6-16) | E235797 | 731788 |
| 3562c | SNB 14-6 | E235797 | |
| 3564a | DRNB (8-16) | E235797 | |
| 3566a | DRNB (10-16) | E235797 | |
| 3568a | DRNB (12-16) | E235797 | |
| 3571a | DRNB (5-25) | E235797 | 731801 |
| 3573a | DRNB (6-25) | E235797 | 731815 |
| 3575a | DRNB (8-25) | E235797 | 731827 |
| 3577a | DRNB (10-25) | E235797 | |
| 3579a | DRNB (12-25) | E235797 | |
| 3580a | DRNB (16-25) | E235797 | |
| 3582a | DRNB (6-35) | E235797 | 731840 |
| 3584a | DRNB (8-35) | E235797 | 731853 |
| 3586a | DRNB (10-35) | E235797 | |
| 35881a | DRNB (16-35) | E235797 | |
| 3588a | DRNB (12-35) | E235797 | |
| 3589a | DRNB (6-50) | E235797 | |
| 3590a | DRNB (8-50) | E235797 | |
| 3592a | DRNB (10-50) | E235797 | |
| 3593a | DRNB (12-50) | E235797 | |
| 359400a | DRNB (6-70) | E235797 | |
| 359401a | DRNB (8-70) | E235797 | |
| 359402a | DRNB (10-70) | E235797 | |
| 359403a | DRNB (12-70) | E235797 | |
| 359404a | DRNB (16-70) | E235797 | |
| 359404b | DRNB (8-95) | E235797 | |
| 359405a | DRNB (10-95) | E235797 | |
| 359406a | DRNB (12-95) | E235797 | |
| 359408a | DRNB (10-120) | E235797 | |
| 359409a | DRNB (12-120) | E235797 | |
| 359411a | DRNB (12-150) | E235797 | |
| 3595a | DRNYB 2-0.5 | E96029 | 736926 |
| 3596a | DRNYB 3-0.5 | E96029 | 739308 |
| 3596c | DSNYB 3-0.5 | E96029 | |
| 3597a | DRNYB 4-0.5 | E96029 | 737295 |
| 3598a | DRNYB 5-0.5 | E96029 | |
| 3600a | DRNYB 2-1 | E96029 | |
| 3603a | DRVB 2.5-1 | E96029 | |
| 3604a | DRNBY 3-1 | E96029 | |
| 3604c | DSNYB 3-1 | E96029 | |
| 3605a | DRVB 3-1 | E96029 | 737281 |
| 3605c | DSVB 3-1 | E96029 | 727269 |
| 3606a | DRVB 3.5-1 | E96029 | |

| | | | |
|--------|---------------|--------|--------|
| 3606c | DSVB 3.5-1 | E96029 | |
| 3607a | DRVBS 4-1 | E96029 | |
| 3608a | DRNYB 3.5-1 | E96029 | |
| 3608c | DSNYB 3.5-1 | E96029 | |
| 36092a | ICTV (1.25-4) | E44245 | |
| 3609a | DRVB 4-1 | E96029 | 737269 |
| 3609c | DSVBL 4-1 | E96029 | 737254 |
| 3610a | DRVBS 5-1 | E96029 | |
| 36112a | ICTV (1.25-5) | E44245 | |
| 3611a | DRVB 5-1 | E96029 | 737255 |
| 3611c | DSVB 5-1 | E96029 | 737242 |
| 3612a | DRNYBS 4-1 | E96029 | |
| 3612c | DSNYB 4-1 | E96029 | |
| 3613a | DRVB 6-1 | E96029 | 737243 |
| 3614a | DRNYB 4-1 | E96029 | |
| 3614c | DSNYBL 4-1 | E96029 | |
| 3615a | DRNYBS 5-1 | E96029 | |
| 3616a | DRNYB 5-1 | E96029 | |
| 3616c | DSNYB 5-1 | E96029 | |
| 3617a | DRVBL 6-1 | E96029 | |
| 3617c | DSVB 6-1 | E96029 | |
| 3618a | DRNYB 6-1 | E96029 | |
| 3619c | DSNYB 6-1 | E96029 | |
| 3621a | DRNYB 8-1 | E96029 | |
| 3622a | DRVB 8-1 | E96029 | |
| 3623a | DRVB 3-2.5 | E96029 | 737230 |
| 3623c | DSVB 3-2.5 | E96029 | 737166 |
| 3624a | DRVB 3.5-2.5 | E96029 | |
| 3625a | DRNYB 3-2.5 | E96029 | |
| 3625c | DSNYB 3-2.5 | E96029 | |
| 3626c | DSVB 3.5-2.5 | E96029 | |
| 3628a | DRVBS 4-2.5 | E96029 | |
| 3628c | DSVB 4-2.5 | E96029 | |
| 3629c | DSNYB 3.5-2.5 | E96029 | |
| 3630a | DRVB 4-2.5 | E96029 | 737218 |
| 3630c | DSVBL 4-2.5 | E96029 | 737229 |
| 3631a | DRVBS 5-2.5 | E96029 | |
| 3632a | DRVB 5-2.5 | E96029 | 737204 |
| 3632c | DSVB 5-2.5 | E96029 | 737217 |
| 3633a | DRNYBS 4-2.5 | E96029 | |
| 3633c | DSNYB 4-2.5 | E96029 | |
| 3635a | DRNYB 4-2.5 | E96029 | |
| 3635c | DSNYBL 4-2.5 | E96029 | |
| 3636a | DRNYBS 5-2.5 | E96029 | |
| 3637a | DRNYB 5-2.5 | E96029 | |
| 3637c | DSNYB 5-2.5 | E96029 | |
| 3639a | DRNYB 6-2.5 | E96029 | |
| 3639c | DSNYB 6-2.5 | E96029 | |
| 36402a | ICTV (2-6) | E44245 | |
| 3640a | DRVB 6-2.5 | E96029 | 737192 |
| 3640c | DSVB6-2.5 | E96029 | 737203 |
| 3641a | DRVB 8-2.5 | E96029 | 737180 |
| 3642a | DRVBL 10-2.5 | E96029 | |
| 3643a | DRVBL 12-2.5 | E96029 | |

| | | | |
|--------|----------------------|---------|--------|
| 3645a | DRNYB 8-2.5 | E96029 | |
| 3647a | DRNYBL 10-2.5 | E96029 | |
| 3649a | DRNYB 12-2.5 | E96029 | |
| 3652a | DRNYB 4-6 | E96029 | |
| 3652c | DSNYB 4-6 | E96029 | |
| 3653a | DRVB 4-6 | E96029 | 737101 |
| 3653c | DSVB 4-6 | E96029 | 737178 |
| 3655a | DRVB 5-6 | E96029 | 737113 |
| 3655c | DSVB 5-6 | E96029 | 737190 |
| 3656a | DRNYB5-6 | E96029 | |
| 3656c | DSNYB 5-6 | E96029 | |
| 3660a | DRNYB 6-6 | E96029 | |
| 3660c | DSNYB 6-6 | E96029 | |
| 3661a | DRVB 6-6 | E96029 | 737126 |
| 3661c | DSVB 6-6 | E96029 | 737202 |
| 3664a | DRNYB8-6 | E96029 | |
| 3664c | DSNYB8-6 | E96029 | |
| 3665a | DRVB 8-6 | E96029 | 737140 |
| 3665c | DSVB 8-6 | E96029 | 737215 |
| 3666a | DRNYB 10-6 | E96029 | |
| 3667a | DRVB 10-6 | E96029 | 737154 |
| 3668a | DRNYB 12-6 | E96029 | |
| 3669a | DRVB 12-6 | E96029 | |
| 3671a | DRNYB 6-10 | E96029 | 733474 |
| 3672a | DRNYB8-10 | E96029 | |
| 3673a | DRNYB 10-10 | E96029 | |
| 3674a | DRNYB 12-10 | E96029 | |
| 3676a | DRNYB 5-16 | E96029 | |
| 3677a | DRNYB 6-16 | E96029 | 733490 |
| 3678a | DRNYB 8-16 | E96029 | |
| 3679a | DRNYB 10-16 | E96029 | |
| 3680a | DRNYB 12-16 | E96029 | |
| 3682a | DRNYB 5-25 | E96029 | |
| 3683a | DRNYB 6-25 | E96029 | 733504 |
| 3684a | DRNYB 8-25 | E96029 | |
| 3685a | DRNYB 10-25 | E96029 | |
| 3735 | BNYT1 | E235797 | 730170 |
| 3735w | BNYTF1 | E235797 | 730171 |
| 3736 | BNYTF 2 | E235797 | 730172 |
| 3740 | PTNB 1-10 | E235797 | |
| 3743 | PTNB 10-12 | E235797 | 730396 |
| 3744 | PTNB 16-13 | E235797 | 730409 |
| 3745b | PTNY (0.5-9) | E235797 | |
| 3745l | PTNYB (1-12) | E235797 | |
| 3746l | PTNYB (2-16) | E235797 | |
| 3747b | PTVB 1-9 | E96029 | |
| 3747l | PTVB 1-12 | E96029 | 737191 |
| 389905 | FDD2-110(5) | E235796 | 737153 |
| 389908 | FDD2-110(8) | E235796 | 737165 |
| 390005 | FDD1-110(5) | E235796 | 732177 |
| 390008 | FDD1-110(8) | E235796 | 737050 |
| 3901 | FDD1-187 (5)with | E235796 | 737189 |
| 3902 | FDD1-187 (8)(w.wire- | E235796 | 736933 |
| 3903 | FDD1-250 | E235796 | 736945 |

| | | | |
|---------|--------------------|-------------|--------|
| 3904 | FDD2-187 (5) | E235796 | 737201 |
| 3905 | FDD 2-187 (8) | E235796 | 736957 |
| 3906 | FDD2-250 | E235796 | 736969 |
| 3907 | FDD5-250 | E235796 | 737214 |
| 3910 | MDD 1-250 | E235796 | 736982 |
| 3911 | MDD 2-250 / DIN | E235796 | 737227 |
| 3912 | MDD 5-250 | E235796 | 737239 |
| 3915 | FRD1-156 | E131576 (N) | 737034 |
| 3916 | FRD2-195 | E131576 (N) | 737252 |
| 3917 | FRD 5-195 | E131576 (N) | 737265 |
| 3920 | MPD 1-156 | E131576 (N) | 737046 |
| 3921 | MPD 2-195 | E131576 (N) | 737292 |
| 3922 | MPD 5-195 | E131576 (N) | 737304 |
| 392305s | FLDNY 1-187 (5)A | E235796 | 736687 |
| 392308s | FLDNY 1-187 (8)A | E128651 | 736700 |
| 3925 | PBDD 1-250 | E235796 | 737059 |
| 3926 | PBDD 2-250 | E235796 | 737073 |
| 392808s | MDV 1-187 (8) | E128651 (N) | 732621 |
| 393405s | MDV 2-187 (5) | E128651 (N) | 736764 |
| 393408s | MDV 2-187 (8) | E128651 (N) | 736776 |
| 3937s | FLDNY 1-250 | E128651 (N) | 736758 |
| 3939s | FLDNY 2-250 | E128651 (N) | 736301 |
| 3944 | DFD1-250 | E235796 | 737099 |
| 3945 | DFD2-250 | E235796 | 737112 |
| 3947 | DFD 5-250 | E235796 | 737026 |
| 3959 | MDFNYD 1-250 | E235796 | 737013 |
| 396005 | DFDNYD1-110(5) | E235796 | 736813 |
| 396008 | DFDNYD1-110(8) | E235796 | 736925 |
| 396105 | DFD 1-187(5) | E235796 | 736923 |
| 396108 | DFD1-187(8) | E235796 | 737125 |
| 396205 | DFD 2-187(5) | E235796 | 736947 |
| 396208 | DFD 2-187 (8) | E235796 | 737139 |
| 3963 | DFDNYD1-250 | E235796 | 736971 |
| 39632 | ICTDN 630809 FA-LL | E78965 | |
| 396405 | DFDNYD 1-187 (5) | E235796 | 736849 |
| 396408 | DFDNYD 1-187 (8) | E235796 | 736861 |
| 396505 | DFDNYD 2-187 (5) | E235796 | 736875 |
| 396508 | DFDNYD2-187 (8) | E235796 | 736838 |
| 3966 | DFDNYD2-250 | E235796 | 736983 |
| 3967 | DFDNYD 5-250 | E235796 | 736997 |
| 3970 | MDFNYD 2-250 | E235796 | 736986 |