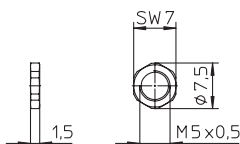


RSKFM 5

Befestigungsmutter für
M5-Einbaustecker und
-kupplungen
Technische Daten:
Werkstoff: CuZn, vernickelt

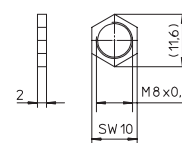
Panel nut for M5 male and
female receptacles
Technical data:
Material: CuZn, brass, nickel
plated



RSKF 8

Befestigungsmutter für
M8-Einbaustecker und
-kupplungen
Technische Daten:
Werkstoff: CuZn, vernickelt

Panel nut for M8 male and
female receptacles
Technical data:
Material: CuZn, brass, nickel
plated



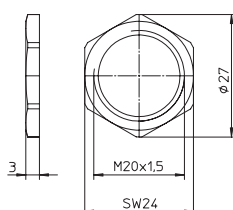
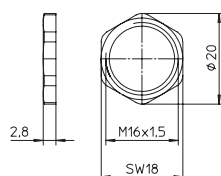
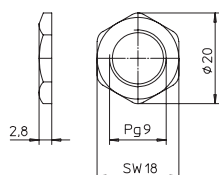
RSKF 9

RSKFM 16

RSKFM 20

Befestigungsmutter für
M12-Einbaustecker und
-kupplungen
Technische Daten:
Werkstoff: CuZn, vernickelt

Panel nut for M12 male and
female receptacles
Technical data:
Material: CuZn, brass, nickel
plated

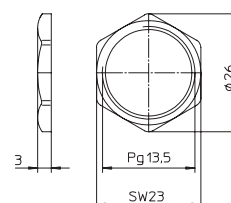
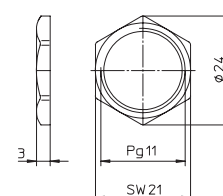


RSKF 11

RSKF 13,5

Befestigungsmutter für
7/8"-Einbaustecker und
-kupplungen
Technische Daten:
Werkstoff: CuZn, vernickelt

Panel nut for 7/8" male and
female receptacles
Technical data:
Material: CuZn, brass, nickel
plated



**Bestellbezeichnung
Designation**

RSKFM 5

RSKF 8



RSKF 9

RSKF 11



RSKFM 16

RSKF 13,5



RSKFM 20

