



Quick Start Guide

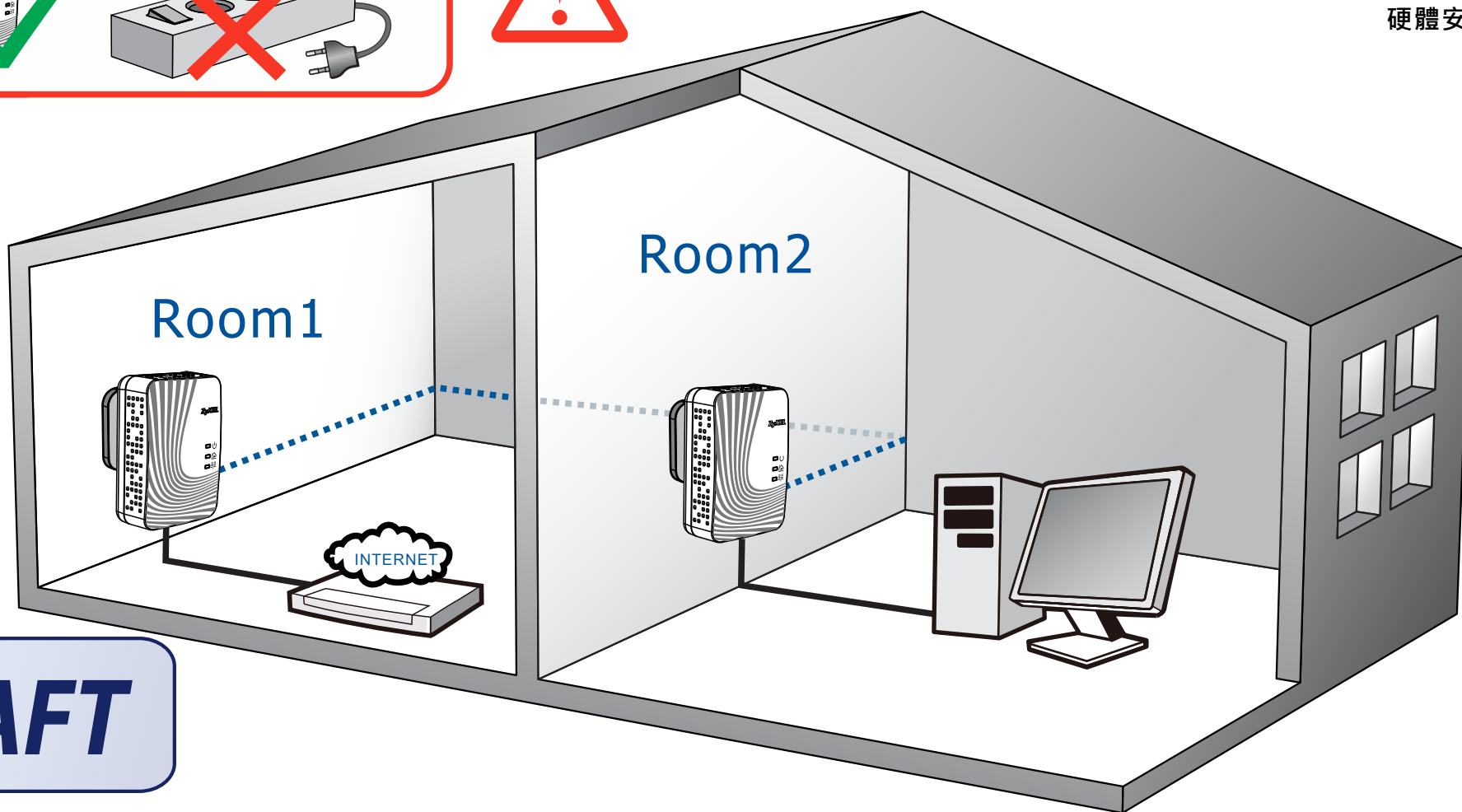
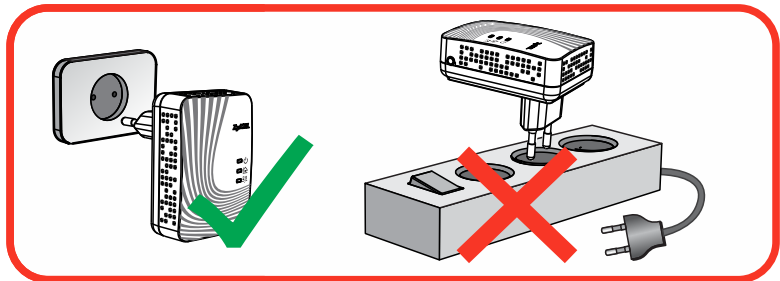
PLA4201

500 Mbps Mini Powerline Ethernet Adapter



Hardware Installation

Installation der Hardware | Instalación del hardware
 Installation du matériel | Installazione hardware
 Maskinvaruinstallation | Hardware Installatie
 Hardwarové instalace | Hardwarová inštalácia
 Хардуерна инсталация | Instalarea Hardware-ului
 Instalacja sprzętu | Riistvara paigaldamine
 Techninės įrangos diegimas | Įrenginys uzstādīšana
 Установка устройства | Hardware telepítés
 硬體安裝



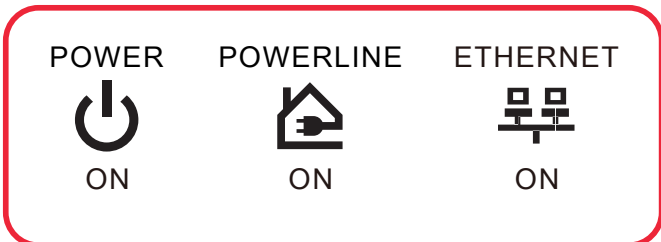
DRAFT

Internet Setup

Internet-Setup | Configuración de Internet
 Installation d'Internet | Configurazione Internet
 Internetinställning | Internet Setup
 Internetové nastavení | Internetové nastavenie
 Настройка Интернет | Setări Internet
 Konfiguracija Internetu | Internetiühenduse seadistamine
 Interneto sąranka | Interneta iestatīšana
 Установка интернета | Internet beállítás
 網際網路設定

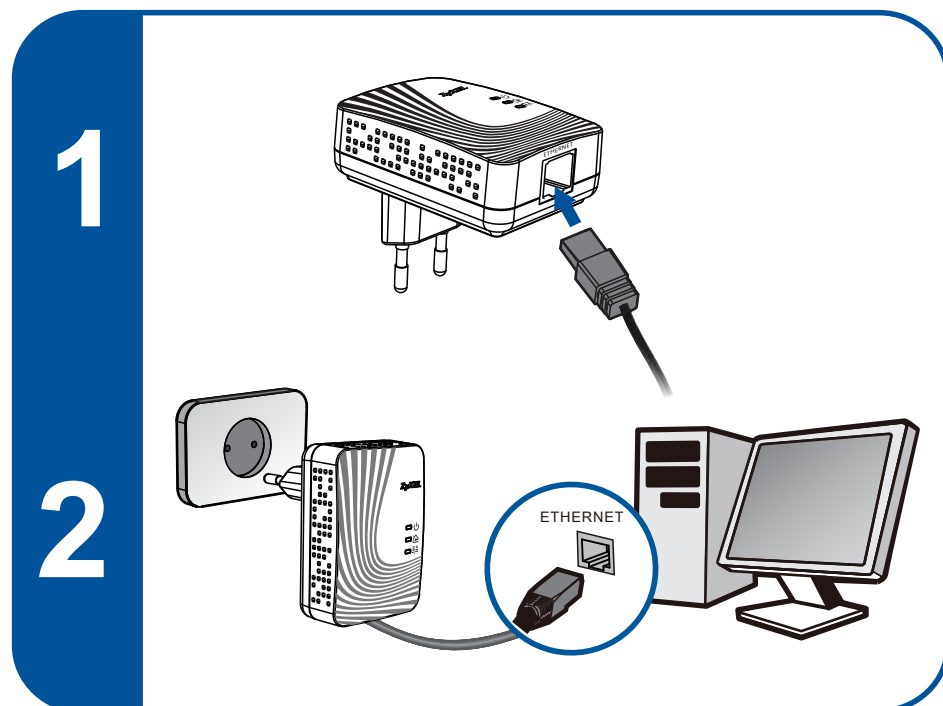
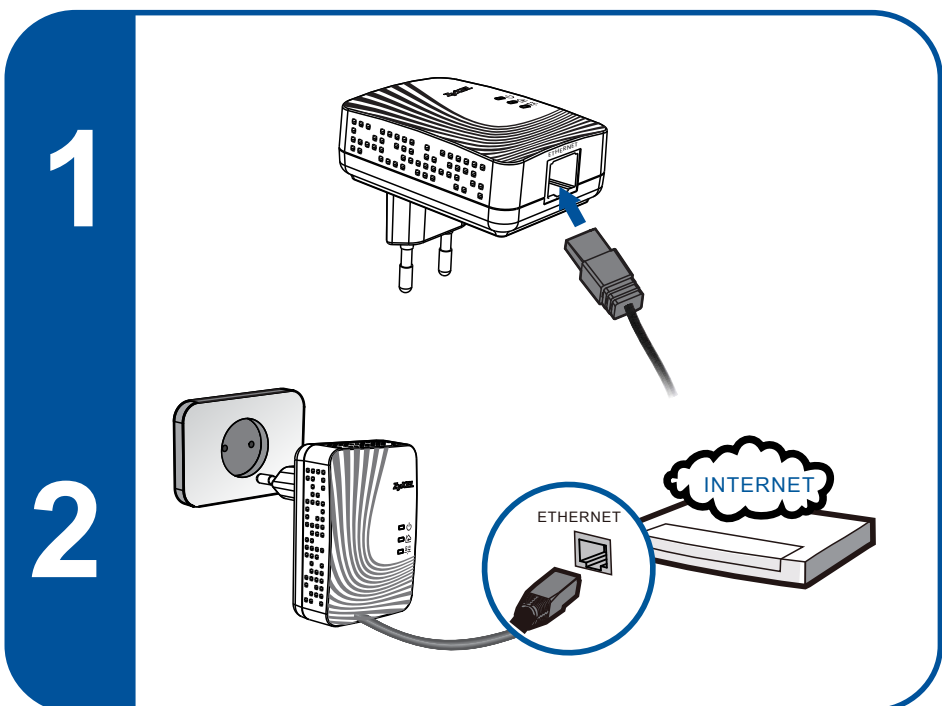
Please Check...

Bitte prüfen... | Por favor, compruebe...
 Veuillez vérifier... | Controllare...
 Kontrollera... | Controleren a.u.b.
 Prosím zkontrolujte | Prosím skontrolujte
 Моля проверете... | Vă rugăm să verificați
 Sprawdz... | Palun kontrollige...
 Prašome patikrinti... | Lūdzu, pārbaudiet...
 Пожалуйста, проверьте... | Kérjük ellenőrizze...
 請檢查...



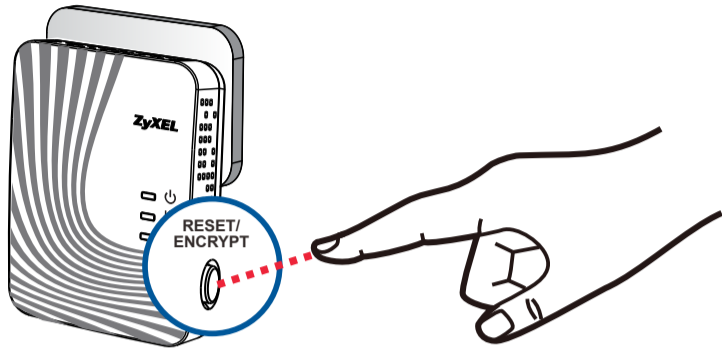
Room 1

Room 2

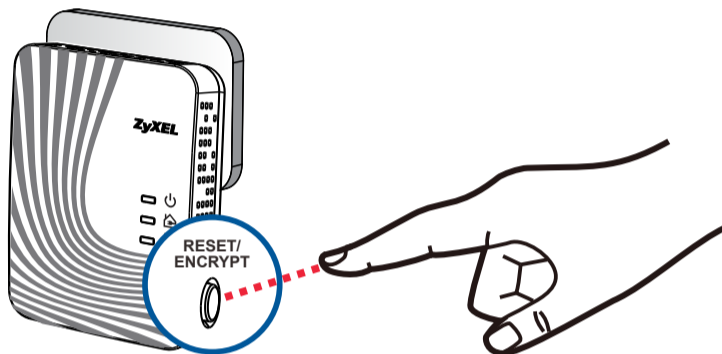


Connection Setup (Optional)

Room1



Room2



Verbindungsaufbau | Procedimiento de Conexión
 Installation de la connexion | Settaggio Connessione
 Anslutningsinställningar | Verbindingsinstelling
 Nastavení připojení | Nastavenie pripojenia
 Настройка на Връзката | Setările Conexiunii
 Konfiguracja połączenia | Ühenduse seadistamine
 Ryšio sąranka | Savienojuma iestatīšana
 Установка соединения | Kapcsolat beállítása
 連線設定

(2 seconds)

(2 sekunden) | (2 segundos)
 (2 secondes) | (2 secondi)
 (2 sekunder) | (2 seconden)
 (2 vteřiny) | (2 sekundy)
 (2 секунди) | (2 secunde)
 (2 sekundy) | (2 sekundit)
 (2 sekundès) | (2 sekundes)
 (2 секунды) | 2 másodperc
 (2 秒)

(2 seconds)



(Within 2 Minutes)

(innerhalb von 2 Minuten) | (en 2 minutos)
 (en moins de 2 minutes) | (entro 2 minuti)
 (inom 2 minuter) | (binnen 2 minuten)
 (ve dvou minutách) | (v rozsahu 2 minút)
 (В рамките на 2 минути) | (În interval de 2 minute)
 (W ciągu 2 minut) | (2 minuti jooksul)
 (Per 2 minutes) | (2 minūšu laikā)
 (в течении 2-х минут) | 2 percen belül
 (2 分鐘內)

For 3 powerline adapters or above, please see user's guide.
 Für 3 oder mehr Powerline Adapter schauen Sie bitte in das Benutzerhandbuch.
 Para conectar 3 o más adaptadores, por favor, consulte el manual de usuario.
 Pour plus de 3 équipements CPL, merci de vous référer au guide utilisateur.
 Per installare 3 o più adattatori powerline segui la guida utente.
 För inkoppling av 3 strömlinjeadapterar eller fler, vänligen se användarhandboken.
 Bij 3 of meer powerline adapters, zie de handleiding.
 Pro 3 powerline adaptéry nebo více, prosím, podívejte se do manuálu.
 Pre 3 powerline adaptéry alebo viacero, prosím, pozrite sa do manuálu.
 За 3 или повече powerline адаптери, проверете ръководството на потребителя.
 Pentru 3 adaptoare sau mai multe, vă rugăm să consultați ghidul utilizatorului.
 Dla 3 lub więcej adapterów PLC patrz podręcznik użytkownika.
 3 või enama Powerline adapteri puhul vaadake kasutusjuhendist.
 Jei naudojami 3 ar daugiau elektros linijos adapterių, žr. vartotojo vadovą.
 Ja izmanto 3 vai vairāk adapterus, skatīt lietošanas instrukciju.
 Если используются 3 и более адаптеров, смотрите руководство пользователя.
 3 powerline adapter fölött kérjük ellenőrizze a felhasználói útmutatót.
 超過三個以上的電力線上網設備設定，請參考完整使用者手冊。

Go to www.zyxel.com to view this product's documentation and certifications.
 Gehen Sie auf www.zyxel.com, um die Dokumentationen und Zertifizierungen dieses Produktes anzusehen.
 Visite www.zyxel.com para ver la documentación y certificaciones de este producto.
 Pour une documentation complète et plus de renseignements sur les certifications, rendez-vous sur le site .
 Visita www.zyxel.com per visualizzare la documentazione e le certificazioni del prodotto.
 Besök www.zyxel.com för att ta del av denna produkts dokumentation och certifieringar.
 Jděte na www.zyxel.com, kde si můžete prohlédnout dokumenty k produktu a certifikaci.
 Prejdite na www.zyxel.com, kde si môžete prehládnuť dokumenty k produktu a certifikácii.
 Документация и сертификация за този продукт може да намерите на www.zyxel.com.
 Vizitati www.zyxel.com pentru a vedea documentația si certificarile produsului.
 Przejdź pod adres www.zyxel.com aby zobaczyć dokumentację i certyfikaty dotyczące tego produktu.
 Lai apskatītu šī produkta dokumentāciju un sertifikāciju ejiet uz www.zyxel.com.
 Для просмотра документации и сертификатов по данному продукту перейдите на страницу www.zyxel.com.
 Látogassa meg a www.zyxel.com oldalt, a termék dokumentációjának és tanúsítványának megtekintéséhez.
 請前往www.zyxel.com參閱此產品的相關文件及認證。

Declarations

ZyXEL

Declaration of Conformity

Product Information
 Product Name : 500 Mbps Mini Powerline Ethernet Adapter
 Model Number : PLA420H
 Produced by : ZyXEL Communications Corporation
 Company Name : ZyXEL Communications Corporation
 Company Add. : No. 2, Gongze E. 9th Rd., East Dist., Hsinchu City 300, Taiwan

to which this declaration relates, is in conformity with the following standards or other normative documents:
 EMC: EN 55022:2010, EN 55024:2010, EN 61000-3-2:2008, EN 50412-2-1:2005
 Safety: EN 60950-1:2006+A11:2009+A1:2010+A12:2011
 Epr: COMMISSION REGULATION (EC) No 1275/2008

The Product herewith complies with requirements of the following Directive :
 The Low Voltage Directive 2006/95/EC, The EMC Directive 2004/108/EC,
 The RoHS Directive 2002/95/EC, and carries the CE-marking accordingly.

The TCP-File is located at:
 Local contact for regulatory topics only:
 Company Name : ZyXEL Communications Corporation
 Company Address : Hsinchu Office: No. 2, Gongze E. 9th Rd., East Dist., Hsinchu City 300, Taiwan
 : No. 6, Innovation Road II, Science Park, Hsin-Chu, 300, Taiwan
 TAIPEI Office : 11F, NO.229, SEC. 3, BEIHOV RD., XINDIAN DIST., NEW TAIPEI CITY 23143, TAIWAN (R.O.C.) Service

Person is responsible for marking this declaration:
 Thomas Wei, Senior Director, Quality Management Department
 Name (Full Name): Position/Title
 2012-03-08

ENGLISH	DEUTSCH	ESPAÑOL	FRANÇAIS
<p>Green Product Declaration</p> <p>RoHS Directive 2002/95/EC</p> <p>WEEE Directive 2002/96/EC (WEEE: Waste Electrical and Electronic Equipment) 2002/96/EC</p> <p>Declaration Signature: Raymond Huang</p> <p>Name/Title: Raymond Huang Quality & Customer Service Division Assistant VP Date (yyyy/mm/dd): 2011/1/24</p>	<p>Green Product Declaration</p> <p>RoHS Directive 2002/95/EC</p> <p>WEEE Directive 2002/96/EC (WEEE: Waste Electrical and Electronic Equipment) 2002/96/EC</p> <p>Unterschrift des Erklärenden: Raymond Huang</p> <p>Name/Titel: Raymond Huang Quality & Customer Service Division Assistant VP Datum (JJJJ/MM/TT): 2011/1/24</p>	<p>Declaración de Producto Ecológico</p> <p>Directiva RoHS 2002/95/EC</p> <p>Directiva REEE 2002/96/EC (REEE: Residuo de Equipos (Eléctricos y Electrónicos) 2002/96/EC)</p> <p>Firma de declaración: Raymond Huang</p> <p>Nombre/Título: Raymond Huang Quality & Customer Service Division Assistant VP Fecha (aaaa/mm/dd): 2011/1/24</p>	<p>Déclaration de Produit Green</p> <p>Directive RoHS 2002/95/EC</p> <p>Directive DEEE 2002/96/EC (DEEE: Déchets des Equipements (Électroniques et Électriques) 2002/96/EC)</p> <p>Signature de la déclaration: Raymond Huang</p> <p>Nom/Titre: Raymond Huang Quality & Customer Service Division Assistant VP Date (aaaa/mm/dd): 2011/1/24</p>
<p>Dichiarazione Green Product</p> <p>Direttiva RoHS 2002/95/CE</p> <p>Direttiva RAEE 2002/96/CE (RAEE: Rifiuti di Apparecchiature Elettriche ed Elettroniche) 2002/96/CE</p> <p>Firma di dichiarazione: Raymond Huang</p> <p>Nome/Titolo: Raymond Huang Quality & Customer Service Division Assistant VP Data (aaaa/mm/dd): 2011/1/24</p>	<p>Productmilieuverklaring</p> <p>RoHS-richtlijn 2002/95/EC</p> <p>AEEA-richtlijn 2002/96/EC (AEEA: Afvalstoffen Elektrische en Elektronische Apparaten) 2002/96/EC</p> <p>Verklaringshandtekening: Raymond Huang</p> <p>Naam/Titel: Raymond Huang Quality & Customer Service Division Assistant VP Datum (JJJJ/MM/DD): 2011/1/24</p>	<p>Miljødeklaration</p> <p>RoHS Direktiv 2002/95/EC</p> <p>WEEE Direktiv 2002/96/EC (WEEE: handling av elektrisk och elektronisk affall) 2002/96/EC</p> <p>Deklaration underteknet av: Raymond Huang</p> <p>Navn/Tittel: Raymond Huang Quality & Customer Service Division Assistant VP Datum (åååå/mm/dd): 2011/1/24</p>	

"INFORMAZIONI AGLI UTENTI"

Ai sensi dell'art. 13 del Decreto Legislativo 25 luglio 2005, n.151 "Attuazione delle Direttive 2002/95/CE, 2002/96/CE e 2003/108/CE, relative alla riduzione dell'uso di sostanze pericolose nelle apparecchiature elettriche ed elettroniche, nonché allo smaltimento dei rifiuti"

Il simbolo del cassonetto barrato riportato sull'apparecchiatura o sulla sua confezione indica che il prodotto alla fine della propria vita utile deve essere raccolto separatamente dagli altri rifiuti.

La raccolta differenziata della presente apparecchiatura giunta a fine vita è organizzata e gestita dal produttore. L'utente che vorrà disfarsi della presente apparecchiatura dovrà quindi contattare il produttore e seguire il sistema che questo ha adottato per consentire la raccolta separata dell'apparecchiatura giunta a fine vita.

L'adeguata raccolta differenziata per l'avvio successivo dell'apparecchiatura dismessa al riciclaggio, al trattamento e allo smaltimento ambientalmente compatibile contribuisce ad evitare possibili effetti negativi sull'ambiente e sulla salute e favorisce il riutilizzo e/o riciclo dei materiali di cui è composta l'apparecchiatura. Lo smaltimento abusivo del prodotto da parte del detentore comporta l'applicazione delle sanzioni amministrative previste dalla normativa vigente.