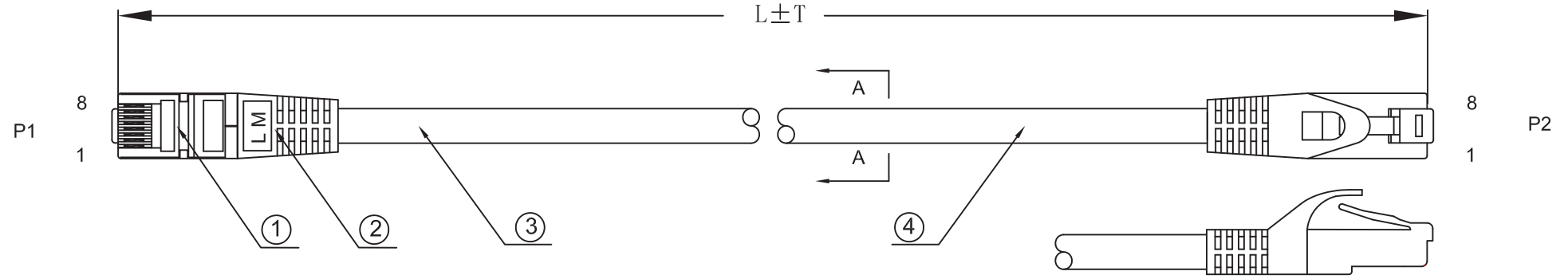
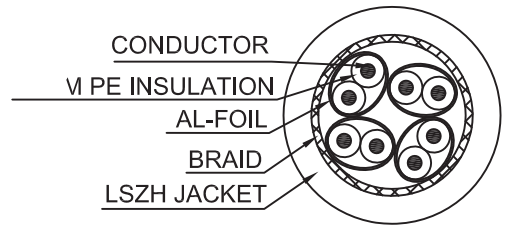


THE INFORMATION CONTAINED IN THIS DRAWING IS THE SOLE PROPERTY OF 2DIRECT GMBH. ANY REPRODUCTION IN PART OR WHOLE WITHOUT THE WRITTEN PERMISSION OF 2DIRECT GMBH IS PROHIBITED. WE RESERVE THE RIGHT TO MAKE TECHNICAL CHANGES. TECHNISCHE ÄNDERUNGEN VORBEHALTEN.

REVISIONS			
REV	DESCRIPTION	DATE	APPROVED
A			



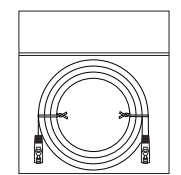
A-A
5:1



PIN OUT

P1	P2
1	1 WHITE
2	2 ORANGE
3	3 WHITE
6	6 GREEN
4	4 BLUE
5	5 WHITE
7	7 WHITE
8	8 BROWN
SHELL	SHELL

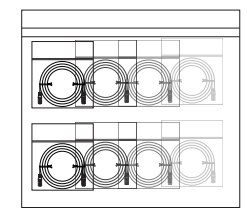
NOTE:
 Electrical test:
 100% open short & miss wire test.
 Pass Fluke test.
 RoHS Compliant, REACH Compliant.



PACKING: SINGLE POLYBAG WITH LABEL



LABEL SIZE: 50*70MM



LABEL A:
 10 pcs in one bag

LABEL B:
 5 pcs in one bag

- 1. LENGTH = 5M, 10PCS PACKED IN ONE BIG PE BAG WITH LABEL A
- 2. 5 < LENGTH ≤ 10M, 5PCS PACKED IN ONE BIG PE BAG WITH LABEL B
- 3. LENGTH > 10M, WITHOUT MIDDLE PACKAGE AND LABEL

RoHS COMPLIANT TO DIRECTIVE 2011/65/EU

1	CONNECTOR:CAT6 RJ45 PLUG,SHIELD,3U,COLOR:TRANSPARENT RED
2	MOLD HOOD:PVC,LENGTH ON MOULDING
3	CABLE:S/FTP CAT6 PIMF CABLE,4X(2X27AWG BC+AL)+B(16X5/0.12AL-MG)+LSZH OD=6.0±0.2MM
4	PRINTING:LOGILINK S/FTP CAT6 27AWGX4P PIMF ISO/IEC 11801 & EN50173 VERIFIED HALOGEN FREE

PACKAGING INFORMATION		
PACKING DIMENSION	mm	.XX
PACKING WEIGHT	kg	
CARTON DIMENSION	mm	.XXX
CARTON QUANTITY	pcs	
CARTON WEIGHT	kg	

DIMENSIONAL TOLERANCES UNLESS OTHERWISE NOTED		
TOLERANCE	inch	mm
.X		
PROJECTION		

APPROVALS		DATE
DRAWN BY	Xujun Yu	28/02/19
CHECKED BY		
APPROVED BY		

PRODUCT TITLE			
CAT.6 PATCH CABLE S/FTP PRIMELINE			
ITEM NO.	DWG. NO.	REV. A	
COLOR VARIATIONS MAY OCCUR		SCALE: NONE	UNITS: mm SHEET / 1

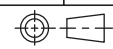
THE INFORMATION CONTAINED IN THIS DRAWING IS THE SOLE PROPERTY OF 2DIRECT GMBH. ANY REPRODUCTION IN PART OR WHOLE WITHOUT THE WRITTEN PERMISSION OF 2DIRECT GMBH IS PROHIBITED.
WE RESERVE THE RIGHT TO MAKE TECHNICAL CHANGES. TECHNISCHE ÄNDERUNGEN VORBEHALTEN.

REVISIONS			
REV	DESCRIPTION	DATE	APPROVED
A			

ITEM NO	LENGTH(MM)	TOLERANCE(MM)	COLOR(PANTONE NO)	CABLE BINDING(MM)	BAG SIZE(MM)	CARTON SIZE(MM)	CARTON Q'TY
CQ2011S	250	+20/-6	WHITE(663 C)		60*35	400*300*320	350
CQ2021S	500	+20/-10	WHITE(663 C)	Ø120	130*160	400*300*320	250
CQ2031S	1000	±20	WHITE(663 C)	Ø120	160*190	400*300*320	200
CQ2041S	1500	±30	WHITE(663 C)	Ø120	160*190	400*300*320	120
CQ2051S	2000	±40	WHITE(663 C)	Ø125	160*190	400*300*320	100
CQ2061S	3000	±60	WHITE(663 C)	Ø140	160*190	400*300*300	80
CQ2071S	5000	±110	WHITE(663 C)	Ø150	200*230	400*300*320	50
CQ2081S	7500	±150	WHITE(663 C)	Ø155	200*230	400*300*320	40
CQ2091S	10000	±200	WHITE(663 C)	Ø180	200*230	400*300*320	30
CQ2101S	15000	±310	WHITE(663 C)	Ø190	230*260	400*300*400	25
CQ2111S	20000	±400	WHITE(663 C)	Ø170	230*260	400*300*400	20
CQ2121S	30000	±630	WHITE(663 C)	Ø200	230*260	400*300*250	10
CQ2141S	50000	±1000	WHITE(663 C)	Ø250	300*340	400*300*340	8
ITEM NO	LENGTH(MM)	TOLERANCE(MM)	COLOR(PANTONE NO)	CABLE BINDING(MM)	BAG SIZE(MM)	CARTON SIZE(MM)	CARTON Q'TY
CQ2012S	250	+20/-6	GREY(COOL GREY 4 C)		60*35	400*300*320	350
CQ2022S	500	+20/-10	GREY(COOL GREY 4 C)	Ø120	130*160	400*300*320	250
CQ2032S	1000	±20	GREY(COOL GREY 4 C)	Ø120	160*190	400*300*320	200
CQ2042S	1500	±30	GREY(COOL GREY 4 C)	Ø120	160*190	400*300*320	120
CQ2052S	2000	±40	GREY(COOL GREY 4 C)	Ø125	160*190	400*300*320	100
CQ2062S	3000	±60	GREY(COOL GREY 4 C)	Ø140	160*190	400*300*300	80
CQ2072S	5000	±110	GREY(COOL GREY 4 C)	Ø150	200*230	400*300*320	50
CQ2082S	7500	±150	GREY(COOL GREY 4 C)	Ø155	200*230	400*300*320	40
CQ2092S	10000	±200	GREY(COOL GREY 4 C)	Ø180	200*230	400*300*320	30
CQ2102S	15000	±310	GREY(COOL GREY 4 C)	Ø190	230*260	400*300*400	25
CQ2112S	20000	±400	GREY(COOL GREY 4 C)	Ø170	230*260	400*300*400	20
CQ2122S	30000	±630	GREY(COOL GREY 4 C)	Ø200	230*260	400*300*250	10
CQ2142S	50000	±1000	GREY(COOL GREY 4 C)	Ø250	300*340	400*300*340	8
ITEM NO	LENGTH(MM)	TOLERANCE(MM)	COLOR(PANTONE NO)	CABLE BINDING(MM)	BAG SIZE(MM)	CARTON SIZE(MM)	CARTON Q'TY
CQ2013S	250	+20/-6	BLACK(BLACK 2 C)		60*35	400*300*320	350
CQ2023S	500	+20/-10	BLACK(BLACK 2 C)	Ø120	130*160	400*300*320	250
CQ2033S	1000	±20	BLACK(BLACK 2 C)	Ø120	160*190	400*300*320	200
CQ2043S	1500	±30	BLACK(BLACK 2 C)	Ø120	160*190	400*300*320	120
CQ2053S	2000	±40	BLACK(BLACK 2 C)	Ø125	160*190	400*300*320	100
CQ2063S	3000	±60	BLACK(BLACK 2 C)	Ø140	160*190	400*300*300	80
CQ2073S	5000	±110	BLACK(BLACK 2 C)	Ø150	200*230	400*300*320	50
CQ2083S	7500	±150	BLACK(BLACK 2 C)	Ø155	200*230	400*300*320	40
CQ2093S	10000	±200	BLACK(BLACK 2 C)	Ø180	200*230	400*300*320	30

RoHS COMPLIANT TO DIRECTIVE 2011/65/EU

1	CONNECTOR:CAT6 RJ45 PLUG,SHIELD,3U,COLOR:TRANSPARENT RED	PACKAGING INFORMATION	DIMENSIONAL TOLERANCES UNLESS OTHERWISE NOTED		APPROVALS	DATE	PRODUCT TITLE CAT.6 PATCH CABLE S/FTP PRIMELINE				
	2		MOLD HOOD:PVC,LENGTH ON MOULDING	TOLERANCE	inch	mm		DRAWN BY Xujun Yu	28/02/19		
				3	CABLE:S/FTP CAT6 PIMF CABLE,4X(2X27AWG BC+AL)+B(16X5/0.12AL-MG)+LSZH OD=6.0±0.2MM	XX				CHECKED BY	
				4	PRINTING:LOGILINK S/FTP CAT6 27AWGX4P PIMF ISO/IEC 11801 & EN50173 VERIFIED HALOGEN FREE	XXX				APPROVED BY	
			PROJECTION	CONFIGURATION DETAILS OF UNDIMENSIONED FEATURES MAY VARY		ITEM NO.	DWG. NO.	REV. A			
						COLOR VARIATIONS MAY OCCUR	SCALE: NONE	UNITS: mm	SHEET / 1		



THE INFORMATION CONTAINED IN THIS DRAWING IS THE SOLE PROPERTY OF 2DIRECT GMBH. ANY REPRODUCTION IN PART OR WHOLE WITHOUT THE WRITTEN PERMISSION OF 2DIRECT GMBH IS PROHIBITED.
WE RESERVE THE RIGHT TO MAKE TECHNICAL CHANGES. TECHNISCHE ÄNDERUNGEN VORBEHALTEN.

REVISIONS			
REV	DESCRIPTION	DATE	APPROVED
A			

ITEM NO	LENGTH(MM)	TOLERANCE(MM)	COLOR(PANTONE NO)	CABLE BINDING(MM)	BAG SIZE(MM)	CARTON SIZE(MM)	CARTON Q'TY
CQ2017S	250	+20/-6	YELLOW(122 C)		60*35	400*300*320	350
CQ2027S	500	+20/-10	YELLOW(122 C)	Ø120	130*160	400*300*320	250
CQ2037S	1000	±20	YELLOW(122 C)	Ø120	160*190	400*300*320	200
CQ2047S	1500	±30	YELLOW(122 C)	Ø120	160*190	400*300*320	120
CQ2057S	2000	±40	YELLOW(122 C)	Ø125	160*190	400*300*320	100
CQ2067S	3000	±60	YELLOW(122 C)	Ø140	160*190	400*300*300	80
CQ2077S	5000	±110	YELLOW(122 C)	Ø150	200*230	400*300*320	50
CQ2087S	7500	±150	YELLOW(122 C)	Ø155	200*230	400*300*320	40
CQ2097S	10000	±200	YELLOW(122 C)	Ø180	200*230	400*300*320	30

ITEM NO	LENGTH(MM)	TOLERANCE(MM)	COLOR(PANTONE NO)	CABLE BINDING(MM)	BAG SIZE(MM)	CARTON SIZE(MM)	CARTON Q'TY
CQ2018S	250	+20/-6	ORANGE(166 C)		60*35	400*300*320	350
CQ2028S	500	+20/-10	ORANGE(166 C)	Ø120	130*160	400*300*320	250
CQ2038S	1000	±20	ORANGE(166 C)	Ø120	160*190	400*300*320	200
CQ2048S	1500	±30	ORANGE(166 C)	Ø120	160*190	400*300*320	120
CQ2058S	2000	±40	ORANGE(166 C)	Ø125	160*190	400*300*320	100
CQ2068S	3000	±60	ORANGE(166 C)	Ø140	160*190	400*300*300	80
CQ2078S	5000	±110	ORANGE(166 C)	Ø150	200*230	400*300*320	50
CQ2088S	7500	±150	ORANGE(166 C)	Ø155	200*230	400*300*320	40
CQ2098S	10000	±200	ORANGE(166 C)	Ø180	200*230	400*300*320	30

ITEM NO	LENGTH(MM)	TOLERANCE(MM)	COLOR(PANTONE NO)	CABLE BINDING(MM)	BAG SIZE(MM)	CARTON SIZE(MM)	CARTON Q'TY
CQ2019S	250	+20/-6	PINK(7424 C)		60*35	400*300*320	350
CQ2029S	500	+20/-10	PINK(7424 C)	Ø120	130*160	400*300*320	250
CQ2039S	1000	±20	PINK(7424 C)	Ø120	160*190	400*300*320	200
CQ2049S	1500	±30	PINK(7424 C)	Ø120	160*190	400*300*320	120
CQ2059S	2000	±40	PINK(7424 C)	Ø125	160*190	400*300*320	100
CQ2069S	3000	±60	PINK(7424 C)	Ø140	160*190	400*300*300	80
CQ2079S	5000	±110	PINK(7424 C)	Ø150	200*230	400*300*320	50
CQ2089S	7500	±150	PINK(7424 C)	Ø155	200*230	400*300*320	40
CQ2099S	10000	±200	PINK(7424 C)	Ø180	200*230	400*300*320	30

RoHS COMPLIANT TO DIRECTIVE 2011/65/EU

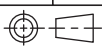
1	CONNECTOR:CAT6 RJ45 PLUG,SHIELD,3U,COLOR:TRANSPARENT RED
2	MOLD HOOD:PVC,LENGTH ON MOULDING
3	CABLE:S/FTP CAT6 PIMF CABLE,4X(2X27AWG BC+AL)+B(16X5/0.12AL-MG)+LSZH OD=6.0±0.2MM
4	PRINTING:LOGILINK S/FTP CAT6 27AWGX4P PIMF ISO/IEC 11801 & EN50173 VERIFIED HALOGEN FREE

PACKAGING INFORMATION	
PACKING DIMENSION	mm
PACKING WEIGHT	kg
CARTON DIMENSION	mm
CARTON QUANTITY	pcs
CARTON WEIGHT	kg

DIMENSIONAL TOLERANCES UNLESS OTHERWISE NOTED		
TOLERANCE	inch	mm
.X		
.XX		
.XXX		

APPROVALS	DATE
DRAWN BY Xujun Yu	28/02/19
CHECKED BY	
APPROVED BY	

PRODUCT TITLE		CAT.6 PATCH CABLE S/FTP PRIMELINE	
ITEM NO.	DWG. NO.	REV.	A
COLOR VARIATIONS MAY OCCUR		SCALE: NONE	UNITS: mm
		SHEET	/ 1



CONFIGURATION DETAILS OF UNDIMENSIONED FEATURES MAY VARY

THE INFORMATION CONTAINED IN THIS DRAWING IS THE SOLE PROPERTY OF 2DIRECT GMBH. ANY REPRODUCTION IN PART OR WHOLE WITHOUT THE WRITTEN PERMISSION OF 2DIRECT GMBH IS PROHIBITED. WE RESERVE THE RIGHT TO MAKE TECHNICAL CHANGES. TECHNISCHE ÄNDERUNGEN VORBEHALTEN.

REVISIONS			
REV	DESCRIPTION	DATE	APPROVED
A			

ITEM NO	LENGTH(MM)	TOLERANCE(MM)	COLOR(PANTONE NO)	CABLE BINDING(MM)	BAG SIZE(MM)	CARTON SIZE(MM)	CARTON Q'TY
CQ2014S	250	+20/-6	RED(1805 C)		60*35	400*300*320	350
CQ2024S	500	+20/-10	RED(1805 C)	Ø120	130*160	400*300*320	250
CQ2034S	1000	±20	RED(1805 C)	Ø120	160*190	400*300*320	200
CQ2044S	1500	±30	RED(1805 C)	Ø120	160*190	400*300*320	120
CQ2054S	2000	±40	RED(1805 C)	Ø125	160*190	400*300*320	100
CQ2064S	3000	±60	RED(1805 C)	Ø140	160*190	400*300*300	80
CQ2074S	5000	±110	RED(1805 C)	Ø150	200*230	400*300*320	50
CQ2084S	7500	±150	RED(1805 C)	Ø155	200*230	400*300*320	40
CQ2094S	10000	±200	RED(1805 C)	Ø180	200*230	400*300*320	30

ITEM NO	LENGTH(MM)	TOLERANCE(MM)	COLOR(PANTONE NO)	CABLE BINDING(MM)	BAG SIZE(MM)	CARTON SIZE(MM)	CARTON Q'TY
CQ2015S	250	+20/-6	GREEN(7730 C)		60*35	400*300*320	350
CQ2025S	500	+20/-10	GREEN(7730 C)	Ø120	130*160	400*300*320	250
CQ2035S	1000	±20	GREEN(7730 C)	Ø120	160*190	400*300*320	200
CQ2045S	1500	±30	GREEN(7730 C)	Ø120	160*190	400*300*320	120
CQ2055S	2000	±40	GREEN(7730 C)	Ø125	160*190	400*300*320	100
CQ2065S	3000	±60	GREEN(7730 C)	Ø140	160*190	400*300*300	80
CQ2075S	5000	±110	GREEN(7730 C)	Ø150	200*230	400*300*320	50
CQ2085S	7500	±150	GREEN(7730 C)	Ø155	200*230	400*300*320	40
CQ2095S	10000	±200	GREEN(7730 C)	Ø180	200*230	400*300*320	30

ITEM NO	LENGTH(MM)	TOLERANCE(MM)	COLOR(PANTONE NO)	CABLE BINDING(MM)	BAG SIZE(MM)	CARTON SIZE(MM)	CARTON Q'TY
CQ2016S	250	+20/-6	BLUE(7691 C)		60*35	400*300*320	350
CQ2026S	500	+20/-10	BLUE(7691 C)	Ø120	130*160	400*300*320	250
CQ2036S	1000	±20	BLUE(7691 C)	Ø120	160*190	400*300*320	200
CQ2046S	1500	±30	BLUE(7691 C)	Ø120	160*190	400*300*320	120
CQ2056S	2000	±40	BLUE(7691 C)	Ø125	160*190	400*300*320	100
CQ2066S	3000	±60	BLUE(7691 C)	Ø140	160*190	400*300*300	80
CQ2076S	5000	±110	BLUE(7691 C)	Ø150	200*230	400*300*320	50
CQ2086S	7500	±150	BLUE(7691 C)	Ø155	200*230	400*300*320	40
CQ2096S	10000	±200	BLUE(7691 C)	Ø180	200*230	400*300*320	30

RoHS COMPLIANT TO DIRECTIVE 2011/65/EU

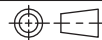
1	CONNECTOR:CAT6 RJ45 PLUG,SHIELD,3U,COLOR:TRANSPARENT RED
2	MOLD HOOD:PVC,LENGTH ON MOULDING
3	CABLE:S/FTP CAT6 PIMF CABLE,4X(2X27AWG BC+A1)+B(16X5/0.12AL-MG)+LSZH OD=6.0±0.2MM
4	PRINTING:LOGILINK S/FTP CAT6 27AWGX4P PIMF ISO/IEC 11801 & EN50173 VERIFIED HALOGEN FREE

PACKAGING INFORMATION

PACKING DIMENSION	mm	.XX
PACKING WEIGHT	kg	
CARTON DIMENSION	mm	.XXX
CARTON QUANTITY	pcs	
CARTON WEIGHT	kg	

DIMENSIONAL TOLERANCES UNLESS OTHERWISE NOTED

TOLERANCE	inch	mm
.X		
.XX		
.XXX		



APPROVALS		DATE	PRODUCT TITLE
DRAWN BY	Xujun Yu	28/02/19	
CHECKED BY			
APPROVED BY			ITEM NO.
CONFIGURATION DETAILS OF UNDIMENSIONED FEATURES MAY VARY			DWG. NO.
COLOR VARIATIONS MAY OCCUR		SCALE: NONE	UNITS: mm
		SHEET	/ 1

REV. A