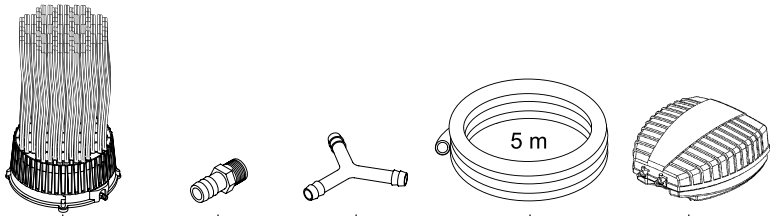


OXYTEX 400/1000 CWS

- DE **Gebrauchsanleitung**
- GB **Operating instructions**
- FR **Notice d'emploi**
- NL **Gebruiksaanwijzing**
- ES **Instrucciones de uso**
- PT **Instruções de uso**
- IT **Istruzioni d'uso**





OxyTex 400 CWS	— 1x —	— 1x —	— 1x —	— 1x —	— 0x —	
OxyTex 1000 CWS	— 1x —	— 1x —	— 1x —	— 1x —	— 0x —	
OxyTex 400 Set CWS	— 1x —	— 0x —	— 1x —	— 1x —	— 1x —	AquaOxy 400
OxyTex 1000 Set CWS	— 1x —	— 0x —	— 1x —	— 2x —	— 1x —	AquaOxy 1000
OxyTex 2000 Set CWS	— 2x —	— 0x —	— 0x —	— 2x —	— 1x —	AquaOxy 2000

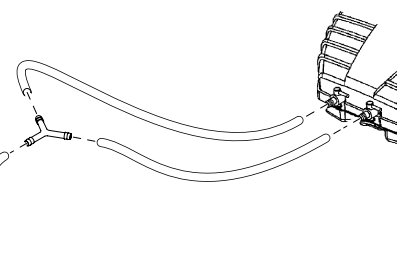
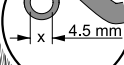
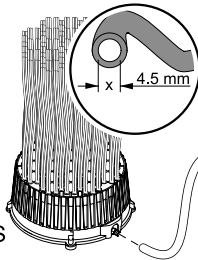


OxyTex 400 CWS

OxyTex 1000 CWS

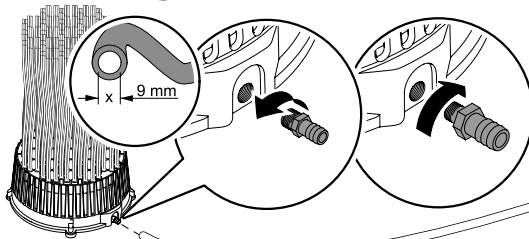
OxyTex 400 Set CWS

OxyTex 1000 Set CWS

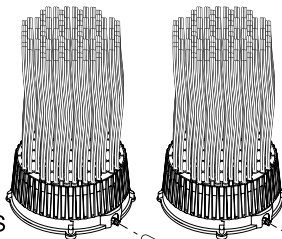


AquaOxy 400

AquaOxy 1000



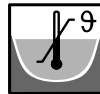
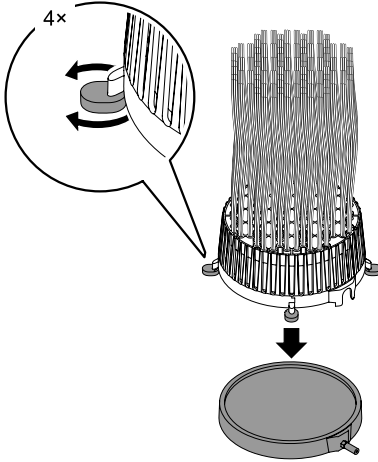
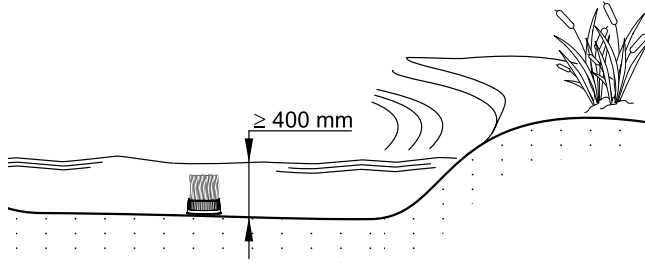
OxyTex 1000 CWS



OxyTex 2000 Set CWS



AquaOxy 2000



	mm	kg	10 m ³ /h	x m ²	9	bar	
OxyTex 400 CWS	Ø: 144 mm h: 290 mm	0.55 kg	×0.4	1 × 1.5	+4 ... +35 °C	max. 0.4 bar	✓
OxyTex 1000 CWS	Ø: 220 mm h: 300 mm	2 kg	×1	1 × 3.5	+4 ... +35 °C	max. 0.4 bar	✓
OxyTex Set 400 CWS	Ø: 144 mm h: 290 mm	2.5 kg	×0.4	1 × 1.5	+4 ... +35 °C	max. 0.4 bar	✓
OxyTex Set 1000 CWS	Ø: 220 mm h: 300 mm	5.8 kg	×1	1 × 3.5	+4 ... +35 °C	max. 0.4 bar	✓
OxyTex Set 2000 CWS	Ø: 220 mm h: 300 mm	8.6 kg	×2	2 × 3.5	+4 ... +35 °C	max. 0.4 bar	✓

DE Hinweise zur Inbetriebnahme

Die Belüfterplatte vor der ersten Anwendung ca. 30 Minuten wässern.

Bei instabilem Stand des OxyTex wegen zu hoher Luftfördermenge wie folgt vorgehen:

- Luftfördermenge am Regulierventil der Belüfterpumpe reduzieren.
- Empfohlene AquaOxy Belüfterpumpe für den OxyTex verwenden:
Für OxyTex 400 CWS empfiehlt OASE AquaOxy 400 CWS.
Für OxyTex 1000 CWS empfiehlt OASE AquaOxy 1000, 2000 oder 4800 CWS.

GB Start-up information

Allow airing plate to soak in water for approx. 30 minutes prior to its first use.

Proceed as follows in the event of instability of the OxyTex's resulting from an excessive amount of air delivered:

- Reduce the air quantity delivered at the control valve of the ventilation pump.
- Use the AquaOxy ventilation pump recommended for the OxyTex:
For the OxyTex 400 CWS, OASE recommends the AquaOxy 400 CWS.
For the OxyTex 1000 CWS, OASE recommends the AquaOxy 1000, 2000 or 4800 CWS.

FR Indications pour la mise en service

Trempier la plaque d'aération dans l'eau env. 30 minutes avant la première utilisation.

En cas d'état instable de l'OxyTex en raison d'un débit d'air trop important, procéder comme suit :

- Réduire le débit d'air en utilisant la soupape de régulation de la pompe à air.
- Recommandation d'utilisation de pompe à air AquaOxy pour l'OxyTex :
pour OxyTex 400 CWS, OASE recommande AquaOxy 400 CWS.
Pour OxyTex 1000 CWS, OASE recommande AquaOxy 1000, 2000 ou 4800 CWS.

NL Instructies voor de ingebruikname

De beluchtingsplaat voor het eerste gebruik ca. 30 minuten spoelen.

Ga bij een instabiele positie van de OxyRex, vanwege te hoge luchtstroomsnelheid, als volgt te werk:

- Reduceer de luchtstroomsnelheid aan het regelventil van de beluchtingspomp.
- Geadviseerde AquaOxy beluchtingspomp voor de OxyTex gebruiken:
voor OxyTex 400 CWS adviseert OASE AquaOxy 400 CWS.
Voor OxyTex 1000 CWS adviseert OASE AquaOxy 1000, 2000 of 4800 CWS.

ES Indicaciones para la puesta en marcha

Antes del primer uso ponga la placa aireadora unos 30 minutos en remojo.

En caso de una posición inestable del OxyTex por un caudal de aire muy alto proceda como sigue:

- Reduzca el caudal de aire en la válvula de regulación de la bomba de aireación.
- Empleo de la bomba de aireación AquaOxy recomendada para el OxyTex:
Para el OxyTex 400 CWS OASE recomienda la AquaOxy 400 CWS.
Para el OxyTex 1000 CWS OASE recomienda la AquaOxy 1000, 2000 o 4800 CWS.

PT Instruções para colocar o aparelho em funcionamento

Com anterioridade à primeira utilização, pôr a placa oxigenadora por 30 minutos em água.

Em caso de posição instável do OxyTex, provocada por grande quantidade de ar transportado, proceder conforme abaixo descrito:

- Reduzir a quantidade de ar com a válvula de controlo da bomba de oxigenação.
- Utilizar a bomba de oxigenação AquaOxy para o aparelho OxyTex:
A OASE recomenda a bomba AquaOxy 400 CWS para o aparelho OxyTex 400 CWS.
Para a aparelho OxyTex 1000 CWS, a OASE recomenda a bomba AquaOxy 1000, 2000 ou 4800 CWS.

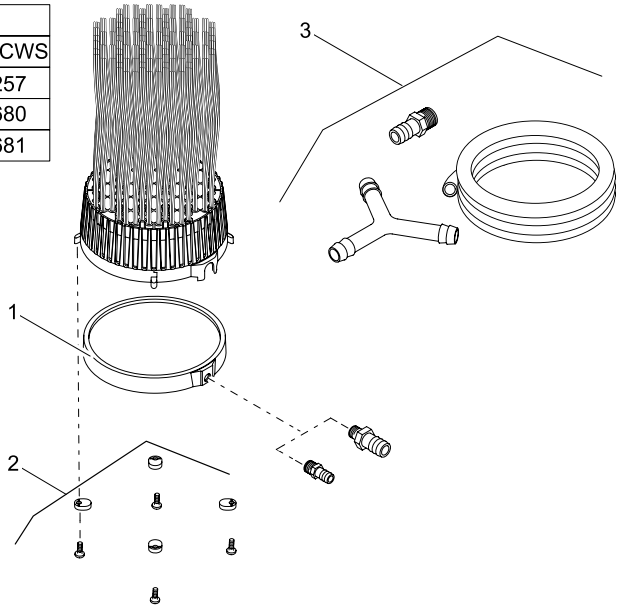
IT Istruzioni per la messa in funzione

Bagnare la piastra del ventilatore per circa 30 minuti prima dell'impiego.

Procedere nel modo seguente se la posizione dell'OxyTex è instabile a causa dell'eccessiva portata d'aria:

- Ridurre la portata d'aria agendo sulla valvola di regolazione della pompa di ventilazione.
- Per l'OxyTex utilizzare la pompa di ventilazione AquaOxy suggerita:
 - Per l'OxyTex 400 CWS si consiglia OASE AquaOxy 400 CWS.
 - Per l'OxyTex 1000 CWS si consiglia OASE AquaOxy 1000, 2000 o 4800 CWS.

OxyTex		
Pos.	400 CWS	1000 CWS
1	13662	12257
2	12680	12680
3	12681	12681



CE

OASE GmbH · www.oase-livingwater.com

Tecklenburger Straße 161 · 48477 Hörstel · Postfach 20 69 · 48469 Hörstel · Germany

12418/008H