

Support Delock

If you have further questions, please contact our customer support support@delock.de

You can find current product information on our homepage: www.delock.com

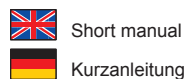
Final clause

Information and data contained in this manual are subject to change without notice in advance. Errors and misprints excepted.

Copyright

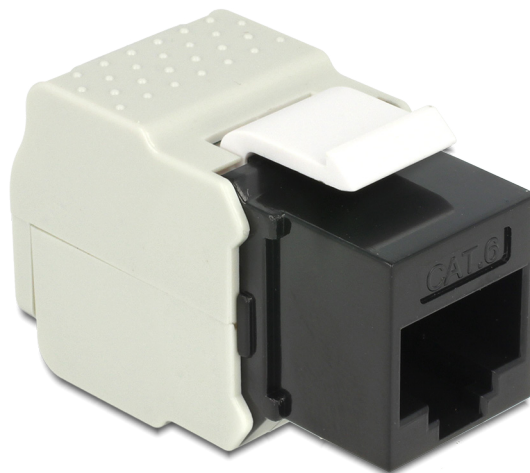
No part of this user's manual may be reproduced, or transmitted for any purpose, regardless in which way or by which means, electronically or mechanically, without explicit written approval of Delock.

Edition: 03/2015



Keystone Module RJ45 female > LSA Cat.6 UTP

86340 - black



EU Import: Tragant Handels- und Beteiligungs GmbH
Beeskowdamm 13/15, 14167 Berlin, Germany



Product-No:86340-86349
User manual no:86340-a
www.delock.com

Declaration of conformity

Products with a CE symbol fulfill the RoHS directive (2011/65/EU), which were released by the EU-commission.

The declaration of conformity can be downloaded here:
<http://www.delock.de/service/conformity>

WEEE-notice

The WEEE (Waste Electrical and Electronic Equipment)-directive, which became effective as European law on February 13th 2003, resulted in an all out change in the disposal of disused electro devices. The primarily purpose of this directive is the avoidance of electrical waste (WEEE) and at the same time the support of recycling and other forms of recycling in order to reduce waste. The WEEE-logo on the device and the package indicates that the device should not be disposed in the normal household garbage. You are responsible for taking the disused electrical and electronic devices to a respective collecting point. A separated collection and reasonable recycling of your electrical waste helps handling the natural resources more economical. Furthermore recycling of electrical waste is a contribution to keep the environment and thus also the health of men. Further information about disposal of electrical and electronic waste, recycling and the collection points are available in local organizations, waste management enterprises, in specialized trade and the producer of the device.

86341 - white



86342 - gray



86343 - blue



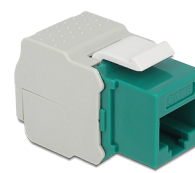
86344 - red



86345 - yellow



86349 - green



EU Import: Tragant Handels- und Beteiligungs GmbH
Beeskowdamm 13/15, 14167 Berlin, Germany



Description

This module by Delock can be used to connect twisted pair cable to an RJ45 female port. With its standardised dimensions it can be used for easy snap-in mounting in e. g. a Keystone patchpanel, face plate or surface-mount box.

Specification

- Connector: RJ45 female (8P/8C) > LSA (toolless)
- Unshielded (Cat.6)
- Compliant with Cat.6 requirements of ISO/IEC 11801 Edition 2.2, EN 50173-1:2011 and EN 60603-7-4, and ANSI/TIA 568-C.2
- For Keystone ports with 19.2 x 14.9 mm
- Dimensions (LxWxH): ca. 41 x 24.5 x 18.1 mm

Package content

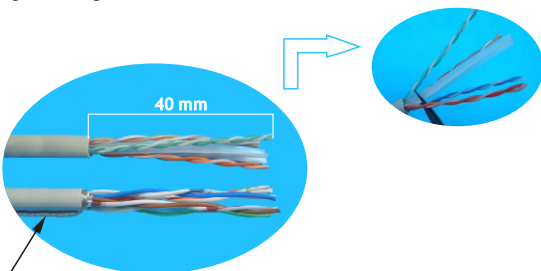
- Keystone module, cover, zip-tie

Safety instructions:

- Protect the product against moisture
- Avoid anti-static electricity when installing the product

Installation

- Strip approximately 40 mm of the cable jacket, until there are separate wire pairs. Suitable for 22 - 26 AWG solid or standard wire.
- Entfernen Sie etwa 40 mm des Isoliermaterials bis die Adernpaare einzeln vorliegen. Geeignet für 22 ~ 26 AWG Einzeladern oder Litzen

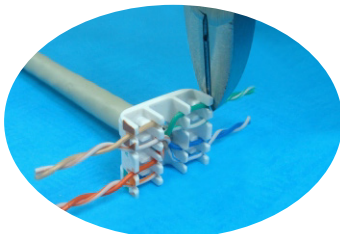


Drain Wire
Schirmungsdraht

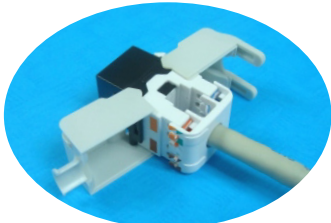
2. Wiring Configurations Adernbelegung

	T568A		T568B	
Pin 5	white / blue	weiß / blau	white / blue	weiß / blau
Pin 4	blue	blau	blue	blau
Pin 1	white / green	weiß / grün	white / orange	weiß / orange
Pin 2	green	grün	orange	orange
Pin 3	white / orange	weiß / orange	white / green	weiß / grün
Pin 6	orange	orange	green	grün
Pin 7	white / brown	weiß / braun	white / brown	weiß / braun
Pin 8	brown	braun	brown	braun

- Follow the cap color code to place the wires into the cap slot. Keep the pairs twisted as possible as you can and cut off the surplus wires.
- Folgen Sie der Farbmarkierung um die einzelnen Adern in die Abdeckkappe einzulegen. Behalten Sie die Verdrillung soweit wie möglich bei und schneiden Sie die überschüssigen Adern ab.



- Follow the color sign to put the cap onto the IDC.
- Orientieren Sie sich an den Farbmarkierungen, und setzen die Kappe in den Stecker ein.



Kurzbeschreibung

Dieses Modul von Delock können Sie zum Anschluss von Netzwerkabel an eine RJ45 Buchse verwenden. Durch die standardisierten Abmessungen ist es zur einfachen Snap-In Montage in verschiedenen Halterungen, wie z. B. Keystone Patchpanel, Dosen oder Gehäuse geeignet.

Technische Daten

- Anschlüsse: RJ45 Buchse (8P/8C) > LSA (werkzeugfrei)
- Ungeschirmt (Cat.6)
- Entspricht den Cat.6 Anforderungen nach ISO/IEC 11801 Edition 2.2, EN 50173-1:2011 und EN 60603-7-4, und ANSI/TIA 568-C.2
- Zum Einbau in Keystone Halterungen mit 19,2 x 14,9 mm
- Maße (LxBxH): ca. 41 x 24,5 x 18,1 mm

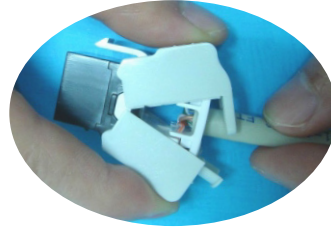
Packungsinhalt

- Keystone Modul, Abdeckung, Kabelbinder

Sicherheitshinweise:

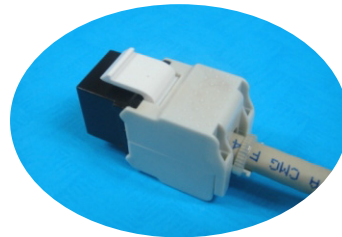
- Produkt vor Feuchtigkeit schützen
- Vermeiden Sie antistatische Aufladung beim Einbau des Produktes

- Lock the side caps with "CLICK" means successful connection.
- Verschließen Sie den Stecker, bis er mit einem "Click" einrastet.

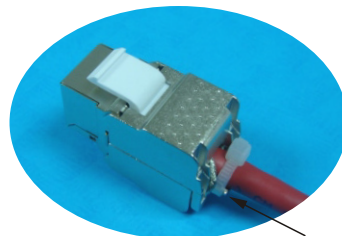


- Tie up the cable and finish.
- Verschließen Sie den Stecker mit einem Kabelbinder.

Unshielded
Ungeschirmt



Shielded
Geschirmt



Connect the drain wire to the shielded shell
Verbinden sie den Schirmungsdraht mit dem geschirmten Gehäuse