

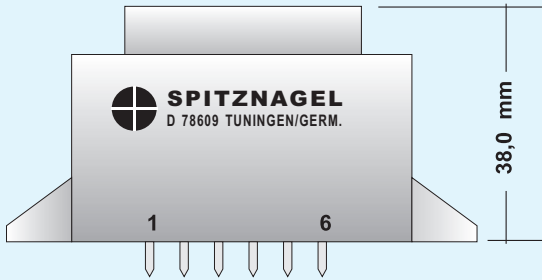
# TRAFO SPK 080.....

Baugröße / Size : EI 48 / 17

# Nennleistung

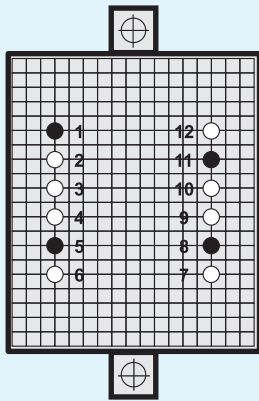
# 10,0 VA

Power Rating



Nicht Kurzschlussfest  
Zweikammer Wicklung  
Vakuumvergossen

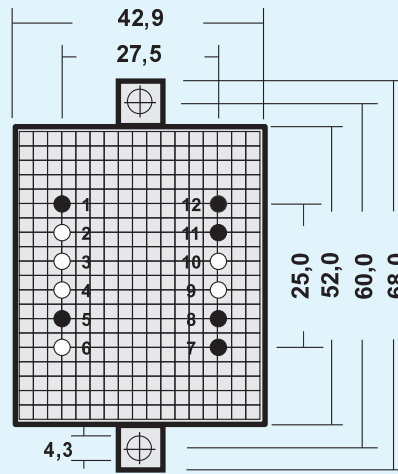
not Short Circuit Proof  
Split Bobin  
Potted under Vacuum



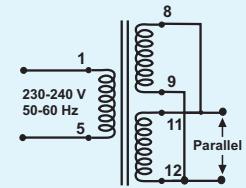
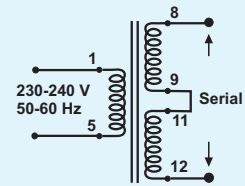
Layout 48A

Ansicht : Layout :

Bauteilseite Top View



Layout 48B



- Pin Anschluß Connected
- ⊗ Pin blind No Connected
- Kein Pin No Pin

Technische Änderungen vorbehalten !

Artikel Nr. Part Number	Primär Primary		Sekundär 1 Secondary 1			Sekundär 2 Secondary 2			Layout Bild Figure	Prüfzeichen Approvals		
	50-60Hz Volt	Pin	Nenn Rated Volt	Leerlauf No Load Volt	Nenn Rated mAmp	Nenn Rated Volt	Leerlauf No Load Volt	Nenn Rated mAmp				
08006	230		6,0	7,5	1667				48A			CE
08009	230		9,0	11,3	1111				48A			CE
08012	230		12,0	15,0	833				48A			CE
08015	230		15,0	18,8	667				48A			CE
08018	230		18,0	22,5	556				48A			CE
08024	230		24,0	30,0	417				48A			CE
0800606	230		6,0	7,5	833	6,0	7,5	833	48B			CE
0800909	230		9,0	11,3	556	9,0	11,3	556	48B			CE
0801212	230		12,0	15,0	417	12,0	15,0	417	48B			CE
0801515	230		15,0	18,8	333	15,0	18,8	333	48B			CE
0801818	230		18,0	22,5	278	18,0	22,5	278	48B			CE
0802424	230		24,0	30,0	208	24,0	30,0	208	48B			CE