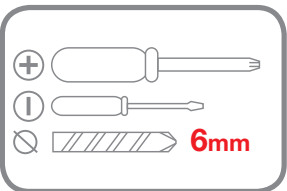
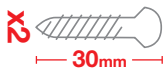
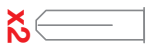
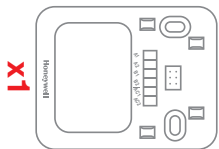
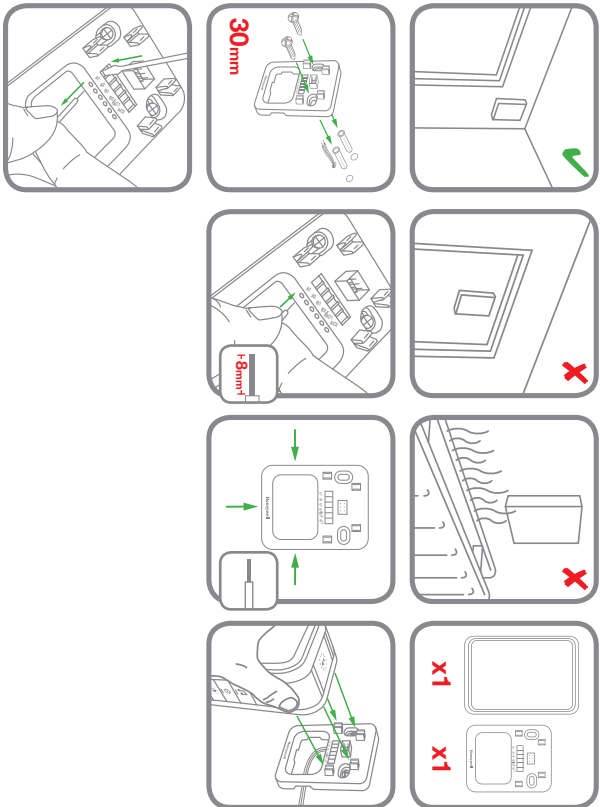


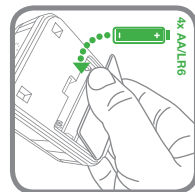
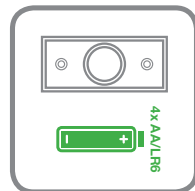
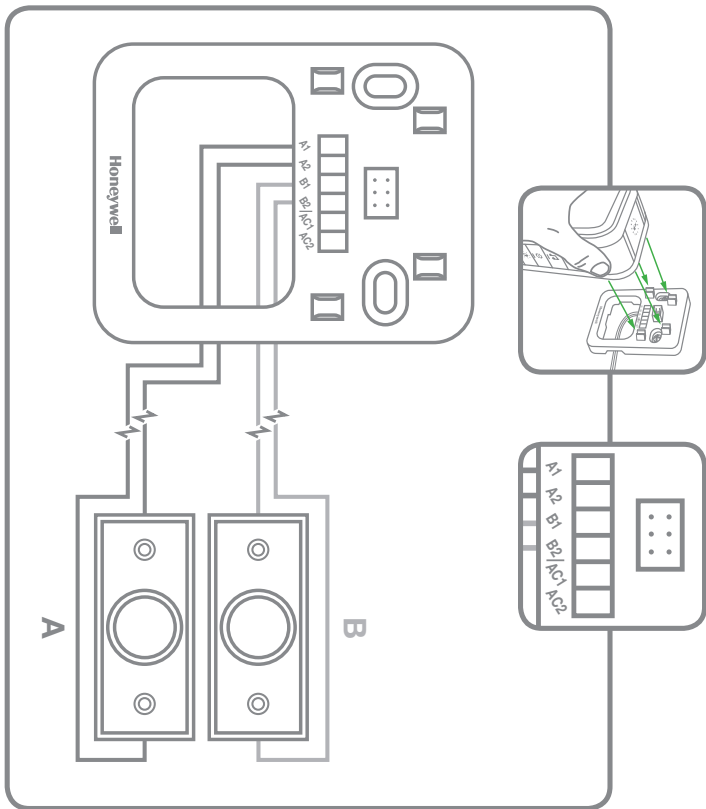
GB Getting started DE Erste Schritte FR Démarrage NL Aan de slag
 FI Aloitusopas UK Kom i gang IT Operazioni preliminari ES Para empezar
 PT Para começar GB Πρώτα βήματα SE Kom igång

GB Contents DE Inhalt FR Contenu NL Inhoud
 FI Sisältö UK Inhold IT Contenuto
 ES Contenido PT Conteúdo GB Περιεχόμενα
 SE Innehåll

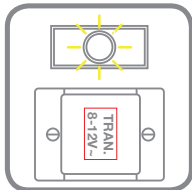


Honeywell

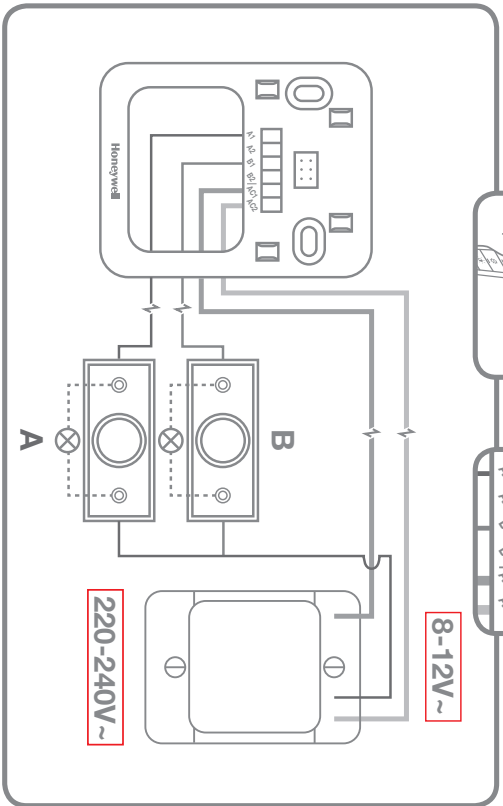
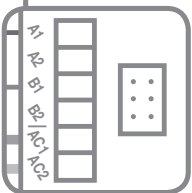
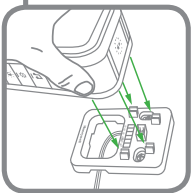
GB Wired push with batteries DE Verdrahteter Drucktaster mit Batterien FR Bouton pousseur câblé avec transformateur NL Bekabelde drukknop met batterijen
F Johdotettu painike paristoilla DK Kablet tryk med batterier IT Pulsante cablato con batterie ES Pulsador cableado con baterías PT Botão com fios com pilhas
GR Καλωδιωμένο ωστήριο με μπαταρίες SE Trådbunden tryckknapp med batterier



- GB Wired illuminated push with transformer DE Verdrahteter Drucktaster mit Beleuchtung und Transformator FR Bouton poussoir éclairé câblé avec transformateur
 NL Verlichte bekabelde drukkноп met transformator FI Johdotettu valaistu painike muuntajalla DK Kablet belyst tryk med transformer
 IT Pulsante cablato illuminato con trasformatore ES Pulsador iluminado cableado con transformador PT Botão iluminado com fios com transformador
 GR Καλωδιωμένο ωστήριο με φωτεινή ένδειξη με μετασχηματιστή SE Trådbunden upplyst tryckknapp med transformator



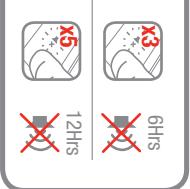
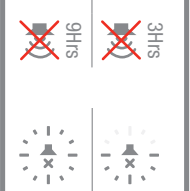
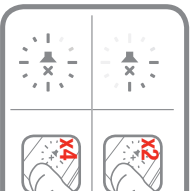
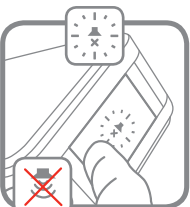
- GB Always ensure the main supply is disconnected before installation, follow Transformer Instructions.
 DE Immer daran denken, die Hauptversorgung vor der Installation abzuschalten. Dazu die Transformatoranweisungen befolgen.
 FR Assurez-vous toujours que l'alimentation principale est déconnectée avant l'installation. Respectez les consignes concernant le transformateur.
 NL Zorg er altijd voor dat de hoofdbevoering afgesloten is voordat er met de installatie begonnen wordt, volg de instructies voor de transformator.
 FI Varmista aina, että päävirtansyöttö on katkaistuna ennen asennusta, ja noudata muuntajan ohjeita.
 DK Sørg altid for, at strømmen er afbrudt før installation. Følg Transformert instruktionserne.
 IT Assicurarsi sempre che l'alimentazione principale sia scollegata prima di procedere con l'installazione. Seguire le istruzioni relative al trasformatore.
 ES Asegúrese siempre de que el suministro eléctrico está desconectado antes de la instalación, siga las instrucciones del transformador.
 PT Certifique-se sempre de que a fonte de alimentação principal é desligada antes da instalação e siga as instruções do transformador.
 GR Να βεβαιώσετε πάντοτε ότι η κύρια παροχή είναι αποσυνδεδεμένη πριν από την εγκατάσταση, τηρείτε τις οδηγίες για τον μετασχηματιστή.
 SE Se alltid till att elnätet är bortkopplat innan installationen och följ transformatorns instruktioner.



GB Optional features **DE** Optionale Funktionen **FR** Options disponibles **LL** Optics
F Valinnaiset ominaisuudet **UK** Valgfrie funksjoner **IT** Funzionalità opzionali **ES** Opciones disponibles
PT Funções opcionais **GR** Προαιρετικές λειτουργίες πρόσθετων **SE** Möjliga funktioner



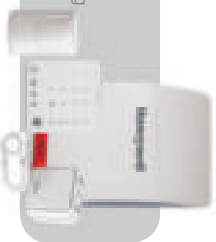
	Hello	Ding Dong	Westminster	Marinba	Piano	Bell	Telephone	SoftAlert
	•	•						
	•	•						
	•	•						



GB Trouble shooting **DE** Fehlerbehebung **FR** Dépannage **LL** Probleemoplossing

F Vianmäritys **UK** Problemløsning **IT** Risoluzione dei problemi **ES** Solución de problemas **PT** Resolução de problemas **GR** Αντιμετώπιση προβλημάτων **SE** Felisöking

livewell.honeywell.com



32304378-001 Rev.A