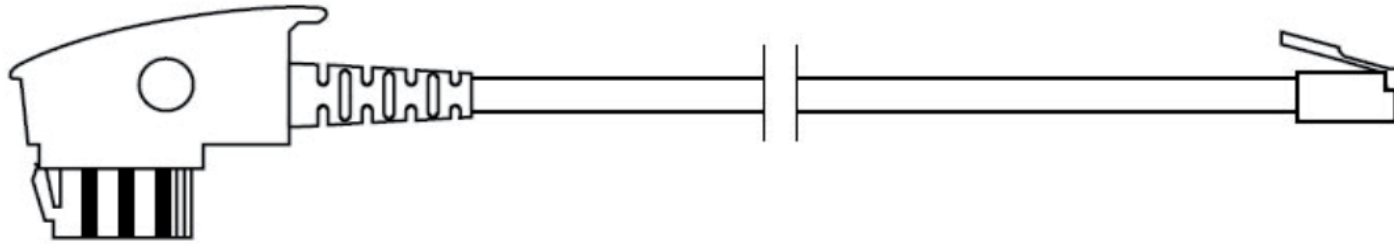


	REVISED	DR	APP



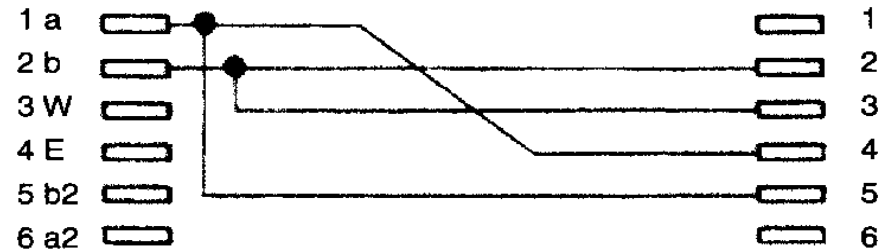
TAE-F PLUG

WESTERN 6/4 PLUG



TAE-Kontakte

Western-Stecker



- Connection: TAE-F Plug - RJ11 Plug
- Structure: 4-lead flat
- Lead material: coppermixture
- Plug: crimped
- Plug material: plastic
- Contactsurface TAE/ RJ11: nickel-plated/ gold-plated
- Color TAE/ RJ11-Plug: black/ transparent
- Cablecolor: black



1	IMPRINT	NO IMPRINT
2	CONNECTORS	TAE F PLUG - RJ 11 PLUG 6/4
3	CABLE	INNERCONDUCTOR 7x0,12mm CCA, OD = PVC BLACK
NO	PART NAME	



DESCRIPTION		TAE F PLUG - RJ 11 PLUG 6/4					
SIZE	A4	DATE	27.12.2022	CHECKED		TOL	
UNIT	MM	DRAWN		APPROVED			
CUSTOM TARIF NO.: 85444210000							