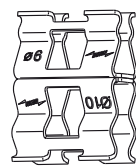


DEHNclip Bewehrungsklemme

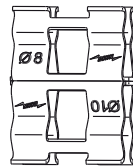
Typ	Art.-Nr.
DC BK 6 RD10 STBLANK	308 130/
DC BK 8 RD10 STBLANK	308 131/
DC BK 10 RD10 STBLANK	308 132/
DC BK 12 RD10 STBLANK	308 133/

DC BK 6 RD 6 STBLANK	308 134/
DC BK 8 RD 8 STBLANK	308 135/
DC BK 12 RD12 STBLANK	308 136/
DC BK 8 RD12 STBLANK	308 137

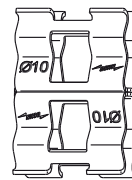
*) Nenndurchmesser \varnothing der Bewehrung



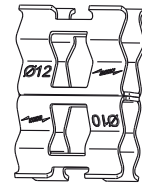
Rd10 / Rd6-7* mm



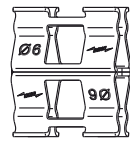
Rd10 / Rd8-9* mm



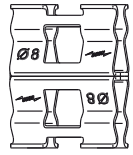
Rd10 (Rd10*) / Rd10* mm



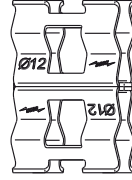
Rd10 / Rd12* mm



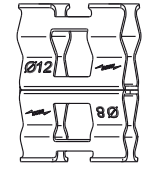
Rd6* / Rd6* mm



Rd8* / Rd8* mm



Rd12* / Rd12* mm



Rd8-9* / Rd12* mm

Typ	Art.-Nr.
DC BK 6 FL30 STBLANK	308 140/
DC BK 8 FL30 STBLANK	308 141/
DC BK 10 FL30 STBLANK	308 142/
DC BK 12 FL30 STBLANK	308 143

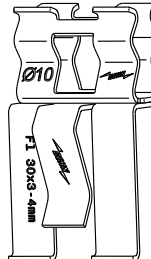
*) Nenndurchmesser \varnothing der Bewehrung



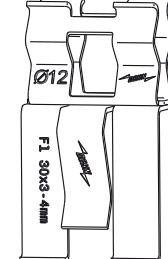
FI30 / Rd6* mm



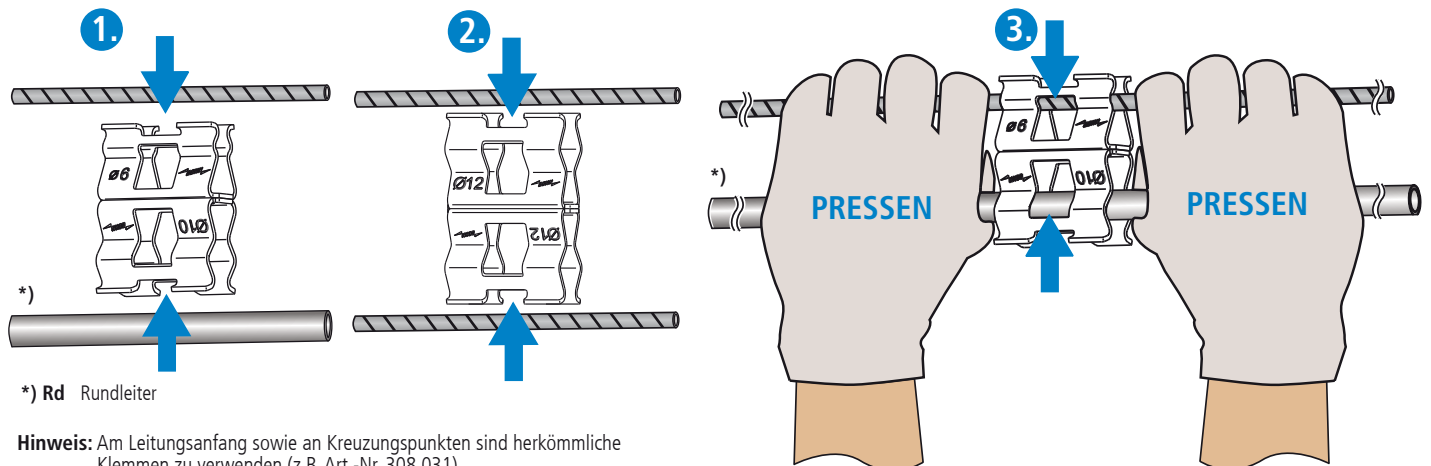
FI30 / Rd8* mm



FI30 / Rd10* mm

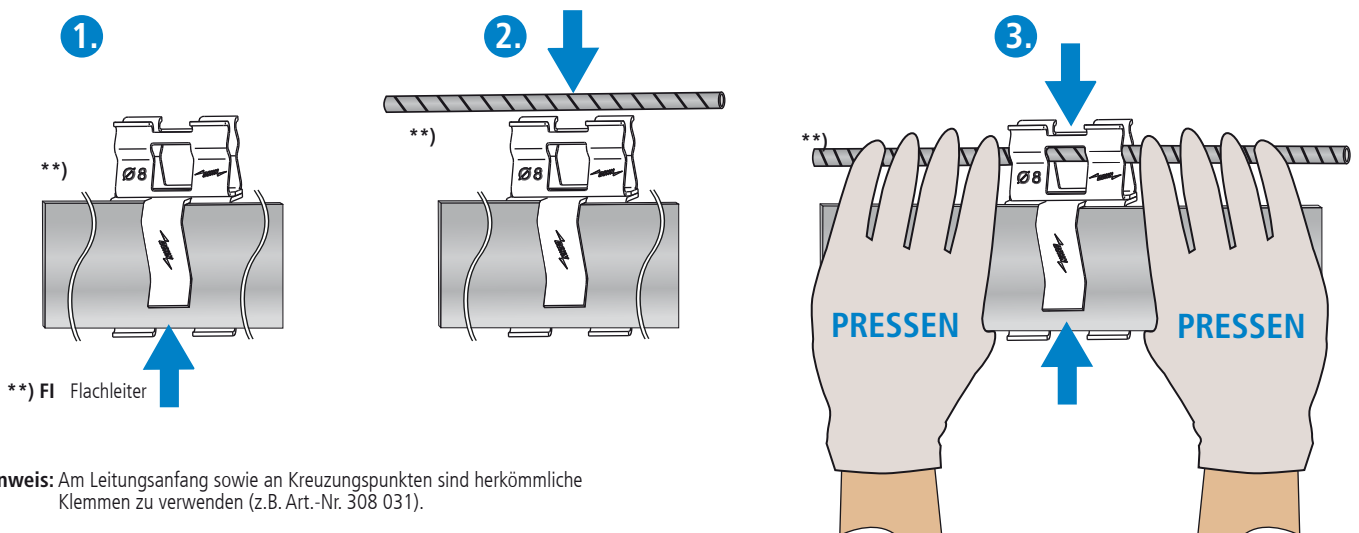


FI30 / Rd12* mm



*) Rd Rundleiter

Hinweis: Am Leitungsanfang sowie an Kreuzungspunkten sind herkömmliche Klemmen zu verwenden (z.B. Art.-Nr. 308 031).

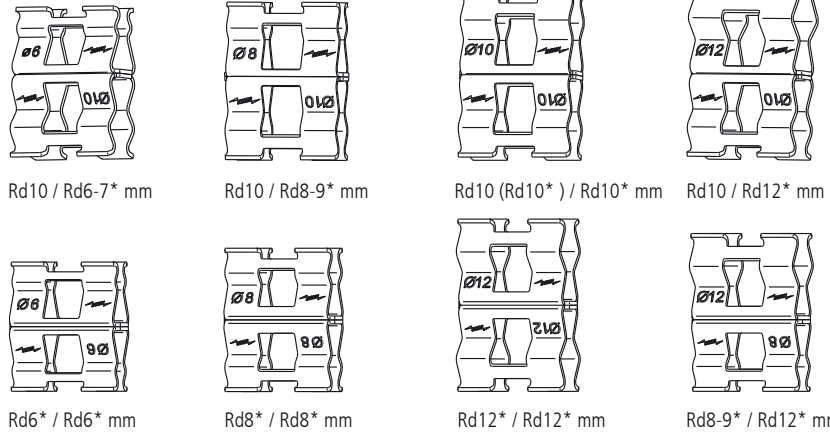


**) FI Flachleiter

Hinweis: Am Leitungsanfang sowie an Kreuzungspunkten sind herkömmliche Klemmen zu verwenden (z.B. Art.-Nr. 308 031).

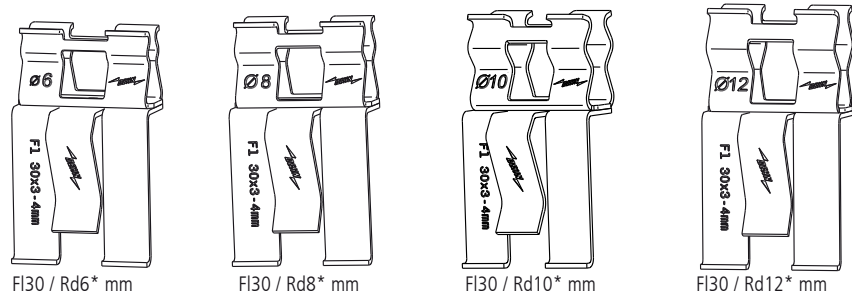
DEHNclip rebar clip

Type	Part No.
DC BK 6 RD10 STBLANK	308 130/
DC BK 8 RD10 STBLANK	308 131/
DC BK 10 RD10 STBLANK	308 132/
DC BK 12 RD10 STBLANK	308 133/
DC BK 6 RD 6 STBLANK	308 134/
DC BK 8 RD 8 STBLANK	308 135/
DC BK 12 RD12 STBLANK	308 136/
DC BK 8 RD12 STBLANK	308 137

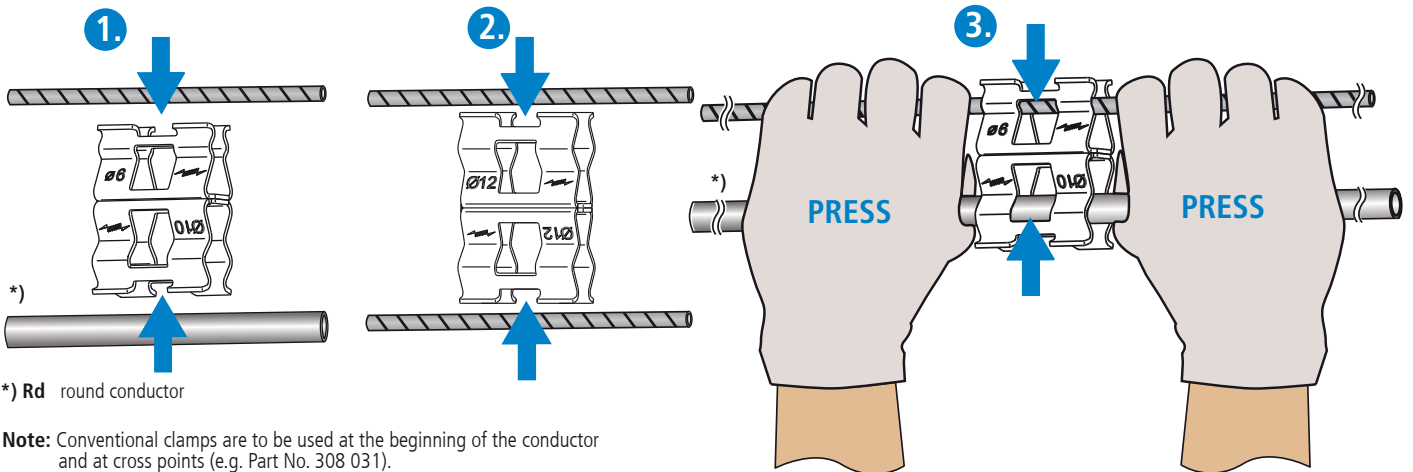


*) Nominal diameter Ø of the rebar

Type	Part No.
DC BK 6 FL30 STBLANK	308 140/
DC BK 8 FL30 STBLANK	308 141/
DC BK 10 FL30 STBLANK	308 142/
DC BK 12 FL30 STBLANK	308 143

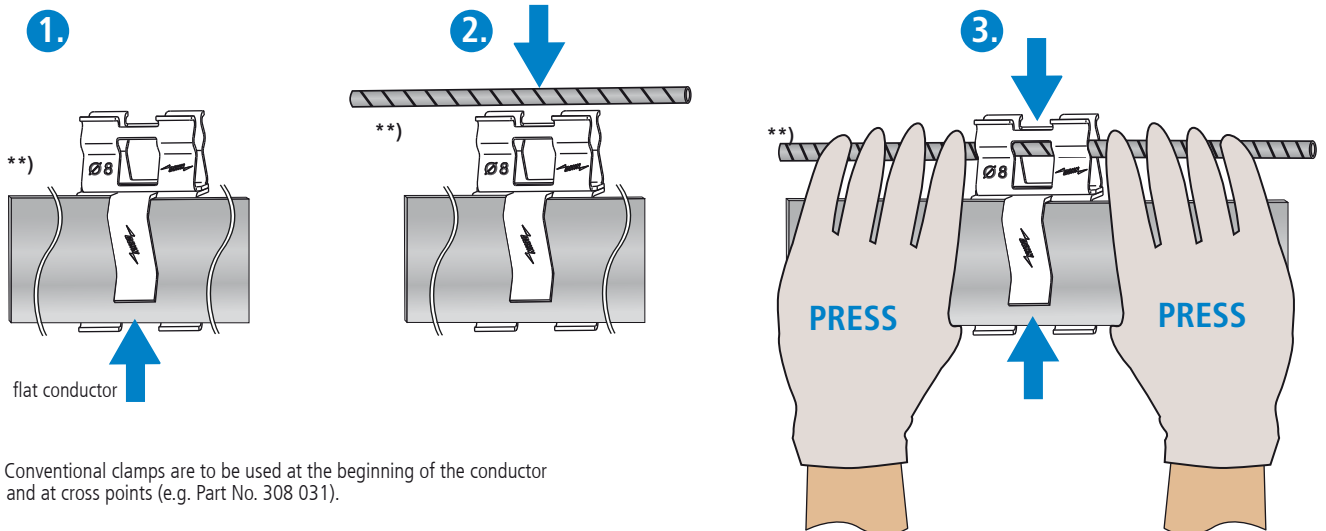


*) Nominal diameter Ø of the rebar



*) Rd round conductor

Note: Conventional clamps are to be used at the beginning of the conductor and at cross points (e.g. Part No. 308 031).



***) FI flat conductor

Note: Conventional clamps are to be used at the beginning of the conductor and at cross points (e.g. Part No. 308 031).

Surge Protection
Lightning Protection
Safety Equipment
DEHN protects.

DEHN + SÖHNE
GmbH + Co.KG.

Hans-Dehn-Str. 1
Postfach 1640
92306 Neumarkt
Germany

Tel. +49 9181 906-0
www.dehn-international.com