

## LTU-Pro Quick Start Guide

### Package Contents



LTU-Pro



Mount Bracket



Bracket Clamp



Bracket Clamp



Carriage Bolts (Qty. 2)



Flange Nuts (Qty. 2)



Gigabit PoE (24V, 0.5A) with  
Mounting Bracket



Power Cord

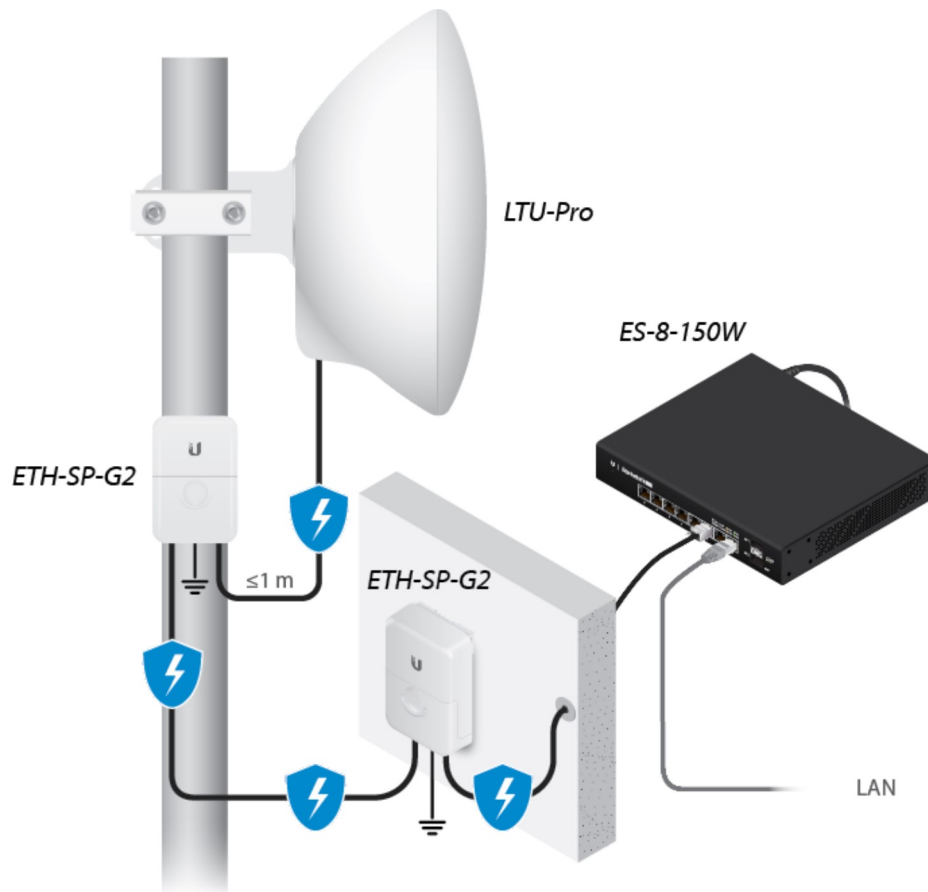
### Installation Requirements

- LTU PtMP AP, such as model LTU-Rocket
- 13 mm wrench
- Surge protection should be used for all outdoor installations. We recommend that you use two Ethernet Surge Protectors, model ETH-SP-G2, one near the

## LTU-Pro Quick Start Guide



**Note:** For guidelines about grounding and lightning protection, follow your local electrical regulatory codes.

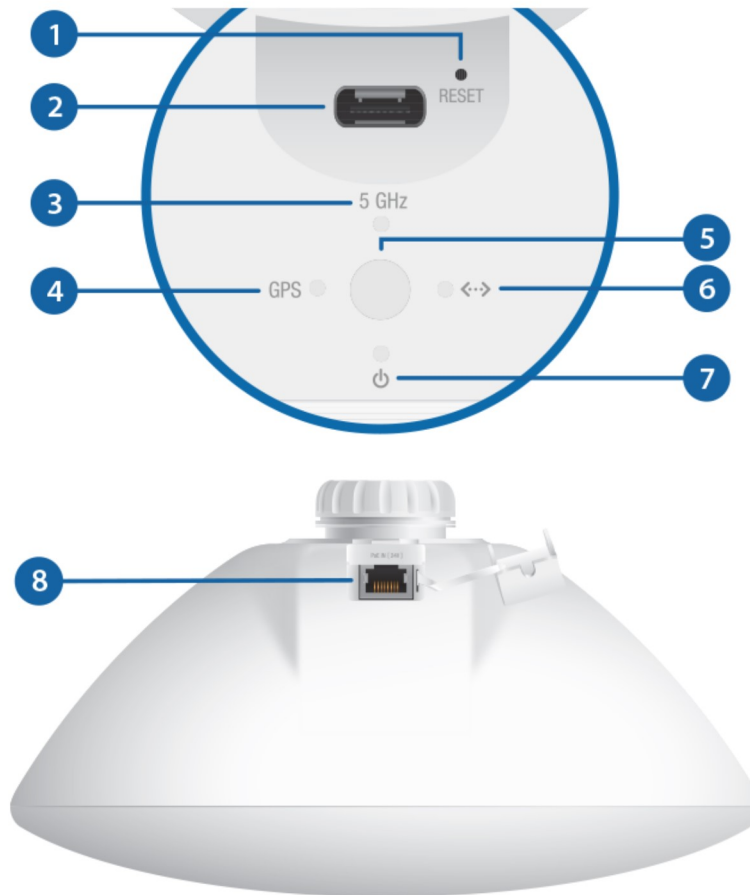


- Outdoor, shielded Category 6 (or above) cabling and shielded RJ45 connectors are required for all wired Ethernet connections.

## Hardware Overview



### LTU-Pro Quick Start Guide



<b>1</b> Reset Button	
To reset to factory defaults, press and hold the Reset button for more than 10 seconds while the device is powered on.	
<b>2</b> USB-C Port	
Reserved for future use.	
<b>3</b> 5 GHz LED	
Blue	The LED will light blue when the link is active.
<b>4</b> GPS LED	
Blue	The LED will light blue when the GPS signal strength is sufficient. This requires a minimum of three satellite connections.
<b>5</b> UNMS LED	

## LTU-Pro Quick Start Guide

White	Ready for use, not connected to Ubiquiti® Network Management System (UNMS™). See <a href="#">“UNMS Management”</a> .
Blue	Ready for use, connected to UNMS.
Steady Blue with Occasional Flashing	Ready for use, unable to connect to UNMS, check connection to UNMS server.
Quickly Flashing Blue	Used to locate a device in UNMS.
Alternating Blue/White	Firmware upgrade in progress.
<b>6 LAN LED</b>	
Blue	The LED will light steady blue when an active Ethernet connection is made to the Ethernet port and flash when there is activity.
<b>7 Power LED</b>	
Blue	The LED will light blue when the device is connected to a power source.
<b>8 PoE In [24V] Port</b>	
This 10/100/1000 Ethernet port is used to connect the power and should be connected to the LAN and DHCP server. Default IP address: 192.168.1.20	

## Pole Mounting

1.



### LTU-Pro Quick Start Guide

2.

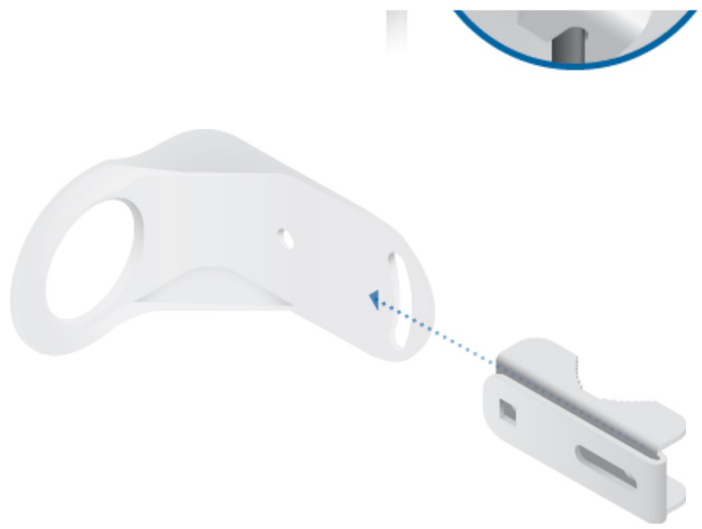


3.



### LTU-Pro Quick Start Guide

4.



5.



6.



### LTU-Pro Quick Start Guide



7.



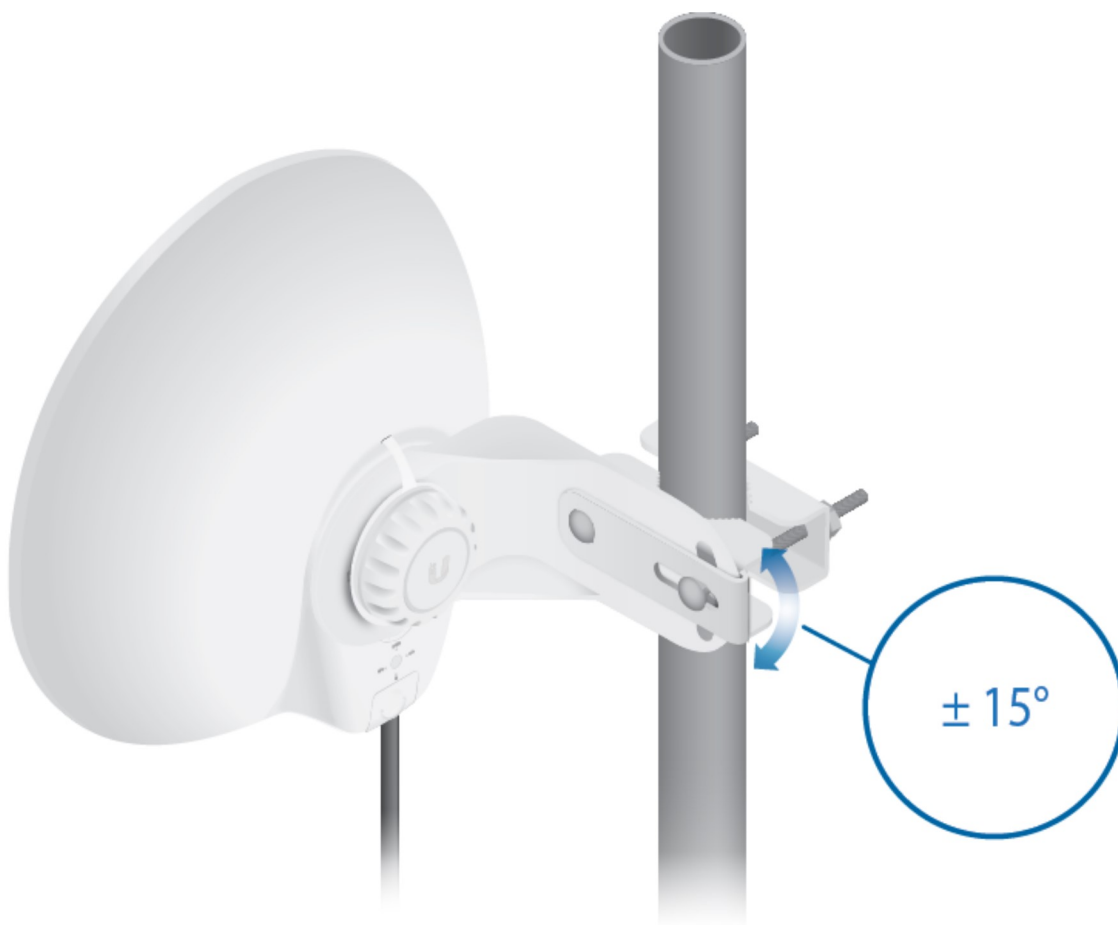
8.



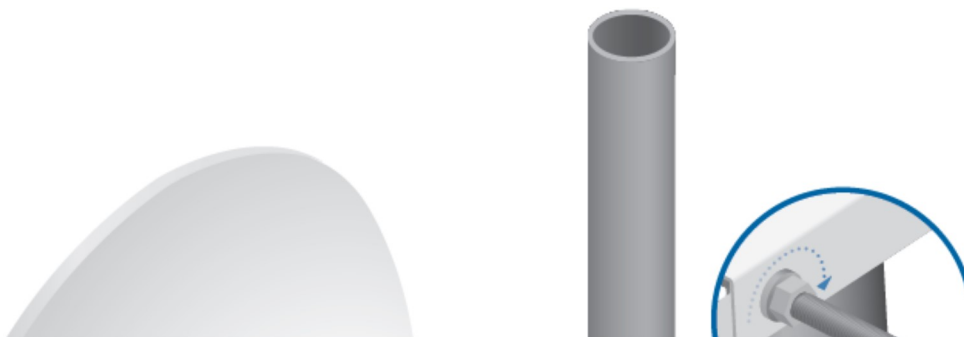
### LTU-Pro Quick Start Guide



9.

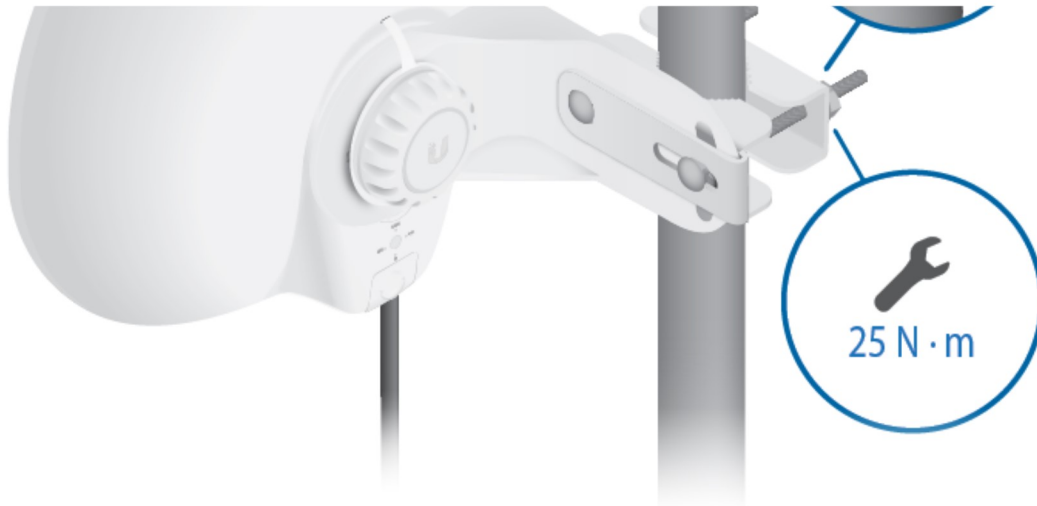


10.





## LTU-Pro Quick Start Guide



## Connecting Power

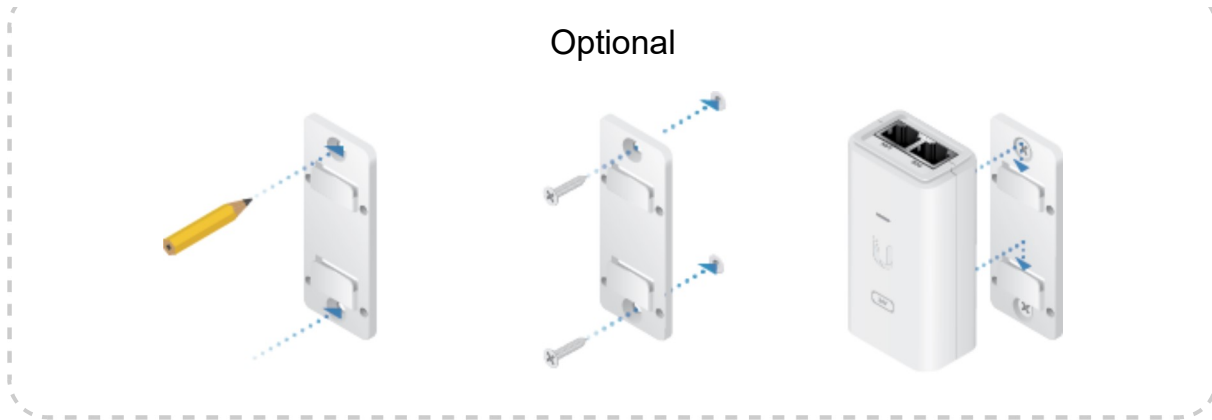
**!** **WARNING:** The switch port must comply with the power specifications listed in the [“Specifications”](#).



OR

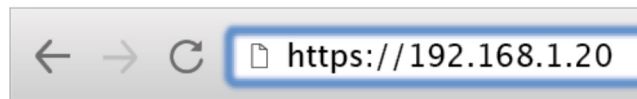


## LTU-Pro Quick Start Guide



## Accessing the Configuration Interface

1. Make sure that your host system is connected via Ethernet to the device.
2. Configure the Ethernet adapter on your host system with a static IP address on the 192.168.1.x subnet.
3. Launch your web browser and type `https://192.168.1.20` in the address field. Press enter (PC) or return (Mac).




4. Select your Country and Language. You must agree to the Terms of Use, EULA, and Privacy Policy to use the product. Click Continue.

The LTU Configuration Interface will appear, allowing you to customize your settings as needed. To have your AP configure your device, proceed to [“Find My AP”](#).

## UNMS Management

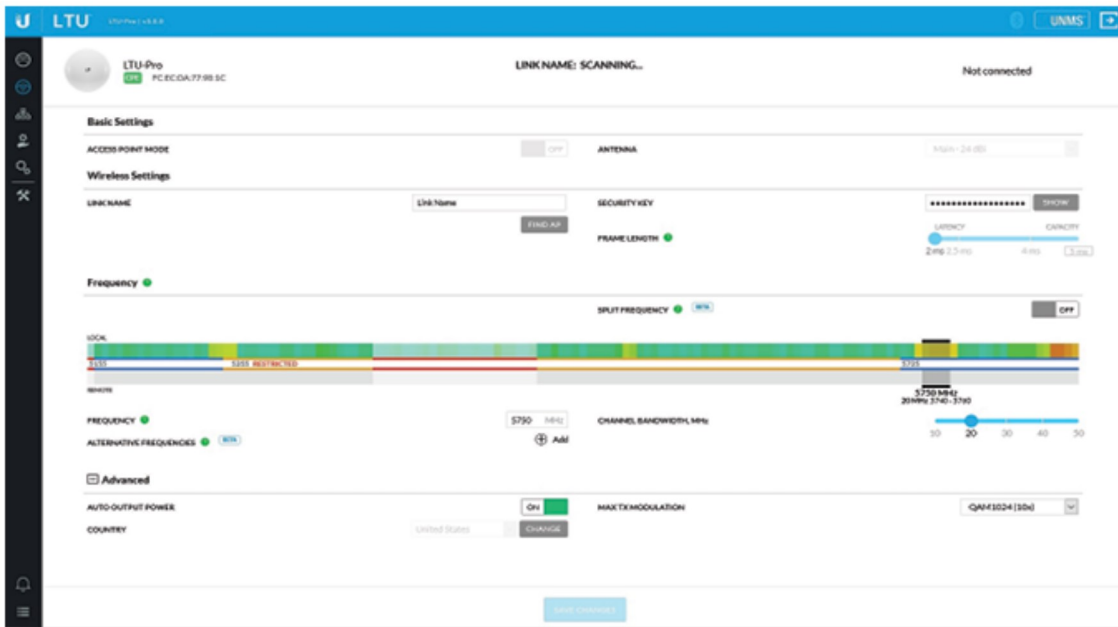
You can manage your device using UNMS, which lets you configure, monitor, upgrade, and back up your devices using a single application. Get started at [www.unms.com](http://www.unms.com)

## Find My AP

1. Click the  icon.
2. In the Wireless Settings section, change the channel bandwidth (default: 20 MHz) as needed.

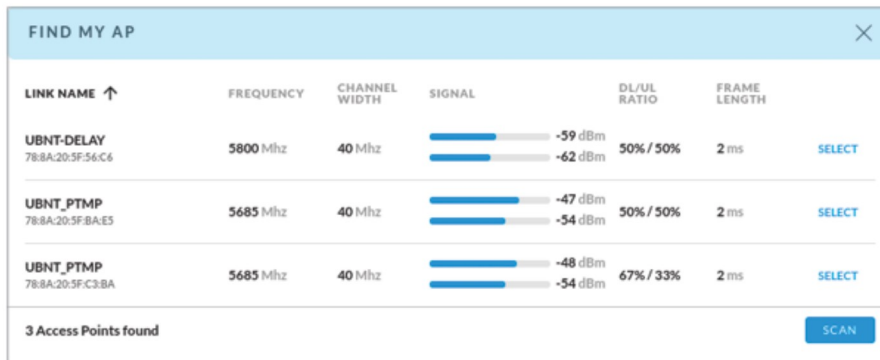
## LTU-Pro Quick Start Guide

set to 20 MHz, then your device will not see that AP and you should change the channel bandwidth on your device.



3. Click Find AP.

4. The device will scan for nearby APs. Click Select for the appropriate AP. To run the search again, click Scan.



5. Follow the on-screen instructions.

## Installer Compliance Responsibility

Devices must be professionally installed and it is the professional installer's responsibility to make sure the device is operated within local country regulatory requirements.



## LTU-Pro Quick Start Guide



The Auto Output Power field is provided to the professional installer to assist in meeting regulatory requirements.

## Specifications

LTU-Pro	
Dimensions	316.5 x 316.5 x 174.3 mm (12.46 x 12.46 x 6.86")
Weight	1.3 kg (2.87 lb)
Networking Interface	(1) 10/100/1000 Ethernet Port
Enclosure	Outdoor UV Stabilized Plastic
Max. Power Consumption	9W
Power Supply	24V, 0.5A Gigabit PoE Adapter (Included)
Power Method	24V Passive PoE In (Pairs 4, 5+; 7, 8-)
Supported Voltage Range	22 - 26V
Gain	24 dBi
Beamwidth	14°
Sidelobe Level	-10 dB
Front-to-Back Ratio	27 dB
Mounting	Pole-Mount (Kit Included)
Wind Loading	150 N @ 200 km/h (33.72 lbf @ 125 mph)
Wind Survivability	200 km/h (125 mph)
ESD/EMP Protection	± 24kV Contact/Air

## LTU-Pro Quick Start Guide

Operating Temperature	-40 to 60 °C (-40 to 140 °F)
Operating Humidity	5 to 95% Noncondensing
Certifications	CE, FCC, IC

Operating Frequency (MHz)		
Worldwide		4800 - 6200*
US/CA	U-NII-1	5150 - 5250
	U-NII-2A	5250 - 5350
	U-NII-2C	5470 - 5725
	U-NII-3	5725 - 5850

\* Depends on regulatory region.

Bluetooth LE Management Radio (MHz)	
Worldwide	2400 - 2483.5

## Safety Notices

1. Read, follow, and keep these instructions.
2. Heed all warnings.
3. Only use attachments/accessories specified by the manufacturer.



**WARNING:** Do not use this product in location that can be submerged by water.



**WARNING:** Avoid using this product during an electrical storm. There may be a remote risk of electric shock from lightning.

## Electrical Safety Information

1. Compliance is required with respect to voltage, frequency, and current requirements indicated on the manufacturer's label. Connection to a different power source than those specified may result in improper operation, damage to the equipment or pose a fire hazard if the limitations are not followed.
2. There are no operator serviceable parts inside this equipment. Service should be provided only by a qualified service technician.
3. This equipment is provided with a detachable power cord which has an integral safety ground wire intended for connection to a grounded safety outlet.
  - a. Do not substitute the power cord with one that is not the provided approved type. Never use an adapter plug to connect to a 2-wire outlet as this will defeat the continuity of the grounding wire.

## LTU-Pro Quick Start Guide

- death.
- c. Contact a qualified electrician or the manufacturer if there are questions about the installation prior to connecting the equipment.
  - d. Protective earthing is provided by Listed AC adapter. Building installation shall provide appropriate short-circuit backup protection.
  - e. Protective bonding must be installed in accordance with local national wiring rules and regulations.

## Limited Warranty

[ui.com/support/warranty](http://ui.com/support/warranty)

The limited warranty requires the use of arbitration to resolve disputes on an individual basis, and, where applicable, specify arbitration instead of jury trials or class actions.

## Compliance

### FCC

Changes or modifications not expressly approved by the party responsible for compliance could void the user's authority to operate the equipment.

This device complies with Part 15 of the FCC Rules. Operation is subject to the following two conditions.

1. This device may not cause harmful interference, and
2. This device must accept any interference received, including interference that may cause undesired operation.

This equipment has been tested and found to comply with the limits for a Class A digital device, pursuant to part 15 of the FCC Rules. These limits are designed to provide reasonable protection against harmful interference when the equipment is operated in a commercial environment. This equipment generates, uses, and can radiate radio frequency energy and, if not installed and used in accordance with the instruction manual, may cause harmful interference to radio communications. Operations of this equipment in a residential area is likely to cause harmful interference in which case the user will be required to correct the interference at his own expense.

This radio transmitter has been approved by FCC.

### ISED Canada

#### CAN ICES-3(A)/NMB-3(A)

This device complies with ISED Canada licence-exempt RSS standard(s). Operation is subject to the following two conditions:

1. This device may not cause interference, and
2. This device must accept any interference, including interference that may cause undesired

## LTU-Pro Quick Start Guide

The device for operation in the band 5150-5250 MHz is only for indoor use to reduce the potential for harmful interference to co-channel mobile satellite systems.

### CAN ICES-3(A)/NMB-3(A)

Le présent appareil est conforme aux CNR d'ISDE Canada applicables aux appareils radio exempts de licence. L'exploitation est autorisée aux deux conditions suivantes :

1. l'appareil ne doit pas produire de brouillage;
2. l'appareil doit accepter tout brouillage radioélectrique subi, même si le brouillage est susceptible d'en compromettre le fonctionnement.

Le présent émetteur radio a été approuvé par ISDE Canada.

Les dispositifs fonctionnant dans la bande 5150-5250 MHz sont réservés uniquement pour une utilisation à l'intérieur afin de réduire les risques de brouillage préjudiciable aux systèmes de satellites mobiles utilisant les mêmes canaux.

## IMPORTANT NOTE

### Radiation Exposure Statement

- This equipment complies with radiation exposure limits set forth for an uncontrolled environment.
- This equipment should be installed and operated with minimum distance 141 cm between the radiator and your body.
- This transmitter must not be co-located or operating in conjunction with any other antenna or transmitter.

## AVIS IMPORTANT

### Déclaration sur l'exposition aux rayonnements

- Cet équipement est conforme aux limites prévues pour l'exposition aux rayonnements dans un environnement non contrôlé.
- Lors de l'installation et de la mise en fonctionnement de l'équipement, assurez-vous qu'il y ait une distance minimale de 141 cm entre l'élément rayonnant et vous.
- Cet émetteur ne doit être installé à proximité d'aucune autre antenne ni d'aucun autre émetteur, et ne doit être utilisé conjointement à aucun autre de ces appareils.

## Australia and New Zealand



Warning: This equipment is compliant with Class A of CISPR 32. In a residential environment this equipment may cause radio interference.

## Brazil

## LTU-Pro Quick Start Guide

⚠️ Não pode causar interferência em sistemas devidamente autorizados.

### CE Marking

CE marking on this product represents the product is in compliance with all directives that are applicable to it.



#### Country List



AT	BE	BG	CY	CZ	DE	DK	EE	EL	ES	FI	FR	HR	HU
IE	IT	LV	LT	LU	MT	NL	PL	PT	RO	SE	SI	SK	UK

BFWA (Broadband Fixed Wireless Access) members noted in blue



**Note:** This device meets Max. TX power limit per ETSI regulations.

The following apply to products that operate in the 5 GHz frequency range:



**Note:** This device is restricted to indoor use only when operating in the 5150 - 5350 MHz frequency range within all member states.



**Note:** All countries listed may operate at 30 dBm. BFWA member states may operate at 36 dBm.



**Note:** Operation in the 5.8 GHz frequency band is prohibited in BFWA member states. Other countries listed may use the 5.8 GHz frequency band.

### WEEE Compliance Statement

### Declaration of Conformity

### Online Resources



## LTU-Pro Quick Start Guide



© 2020 Ubiquiti Inc. All rights reserved.