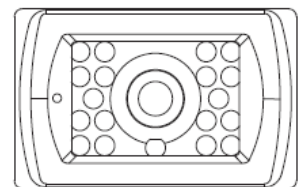
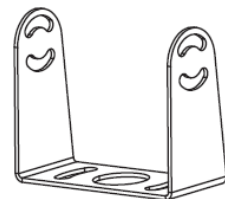
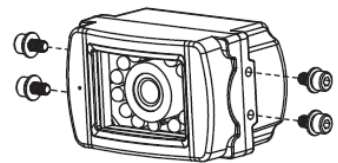


AUTOMOTIVE RÜCKFAHRKAMERA RVC 3.0



Subject to availability and technical modification.

Verkaufsstart

JUNI 2019

Order Number

2 009 019 000 000

EAN-Code

4 260 499 851 934

Highlights

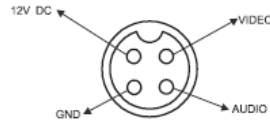
- 12-V Automotive Rückfahrkamera
- PAL
- High Performance CCD Sensor
- IR LED Low Light Optimierung
- Wasserfest (IP69K)
- Breiter Blickwinkel 95 (H), 80 (V), 120 (D)
- Audio Mikrofon & Heizung
- Signal-/Rauschabstand : besser als 48 dB
- Auto Weißabgleich
- Elektronischer Shutter
- Auflösung: 700 TV lines
- Min. Beleuchtung:
1.0 Lux at F2.0
0 Lux mit IR an
- Abmessungen: 77 (W), 44.6 (H), 55 (D) mm
- Arbeitstemperatur: -30 C ~ +70 C
- Gewicht: ca. 0.50 Kg
- Weißes Gehäuse

AUTOMOTIVE RÜCKFAHRKAMERA RVC 3.0

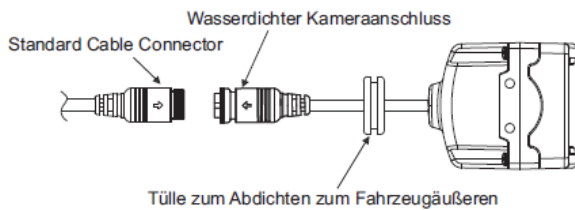
2/2

Inhalt:

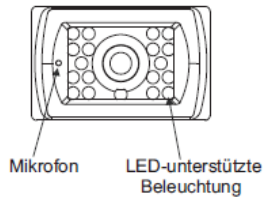
Kamera
Halterung
Hardware-Kit



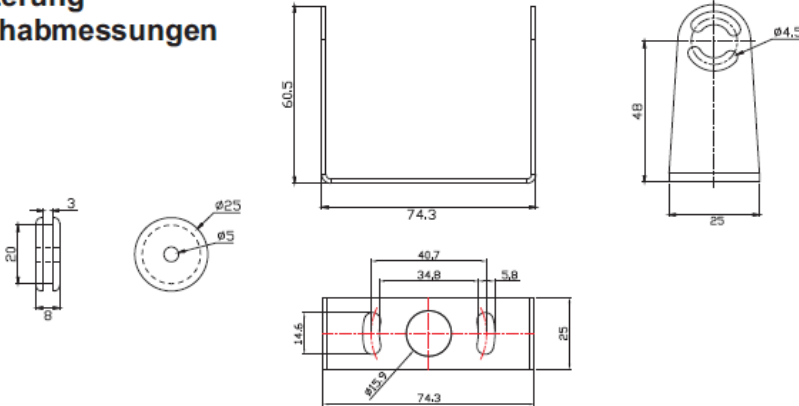
Installation und Pin Out:



Endansicht Kabelanschluss

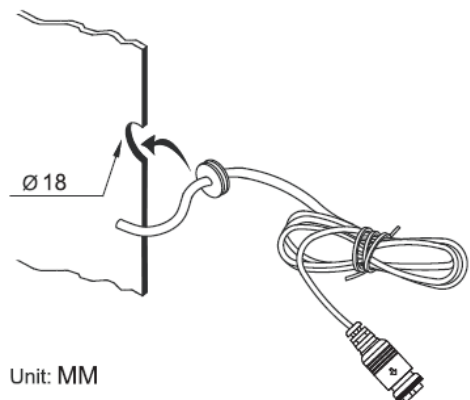
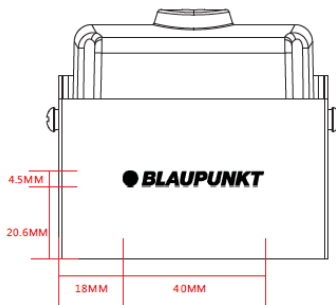


Halterung Lochabmessungen



Unit: MM

Empfohlenes Tüllenloch



Unit: MM

Subject to availability and technical modification.