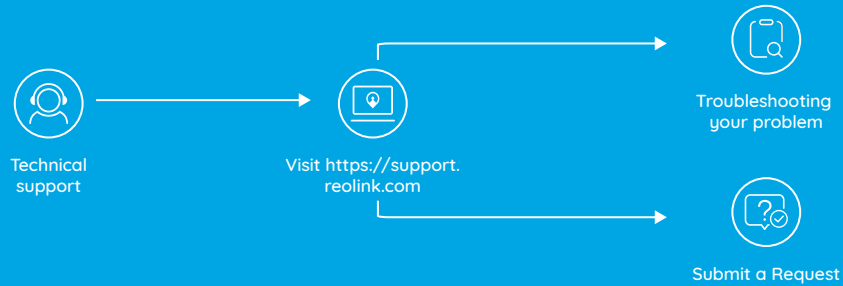
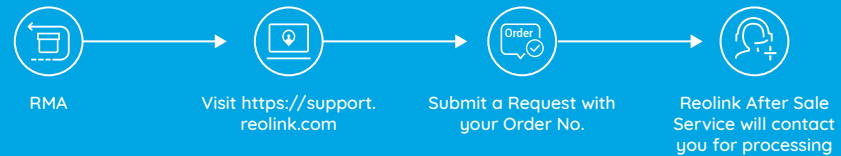


• Technical Support



Reolink B800/B400/D400  
**Quick Start Guide**

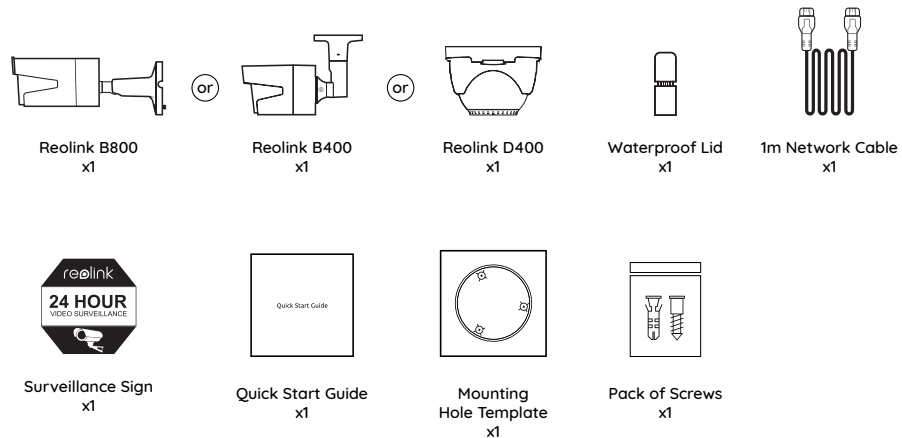
• RMA Contact



## Contents

English .....	1
Deutsch .....	6
French .....	8
Italian .....	10
Spanish .....	12

## What's in the Box



## General Introduction

### B800

18 PCs IR LEDs

Lens

Daylight Sensor

Built-in Mic

Waterproof Lid

Network Cable

Reset Button

Power Port(Optional)



### B400

18 PCs IR LEDs

Lens

Daylight Sensor

Built-in Mic



### D400

18 PCs IR LEDs

Lens

Daylight Sensor

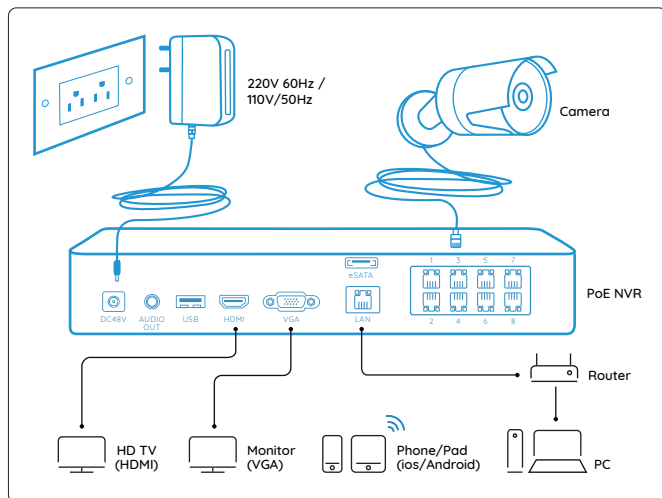
Built-in Mic



## Camera Connection

B800/B400/D400 can **ONLY** work with Reolink POE NVR. these cameras can't work standalone or with other 3rd party software. You can connect the camera directly to Reolink PoE NVR via Ethernet cable and view the camera on Reolink App, Reolink Client and HDMI/VGA monitor.

The cable connections are shown as below:



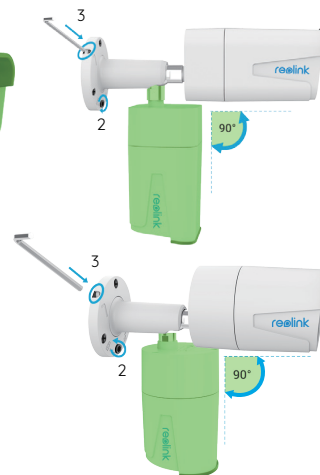
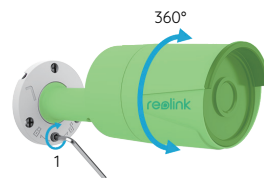
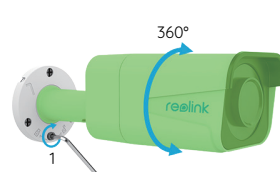
### Note:

**B400/D400** can work with Reolink 8 channel POE NVR RLN8-410 and 16 channel POE NVR RLN16-410.

**B800** can **ONLY** work with Reolink 8 channel POE NVR RLN8-410.

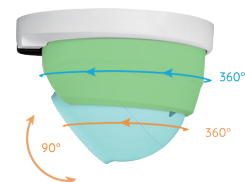
## How to Adjust Direction

### • B800/B400



1. Twist it with the wrench to unlock, and adjust the cam (green part) in any directions.
2. After adjustment, twist it back to lock it.
3. Store the wrench here for later use.

### • D400

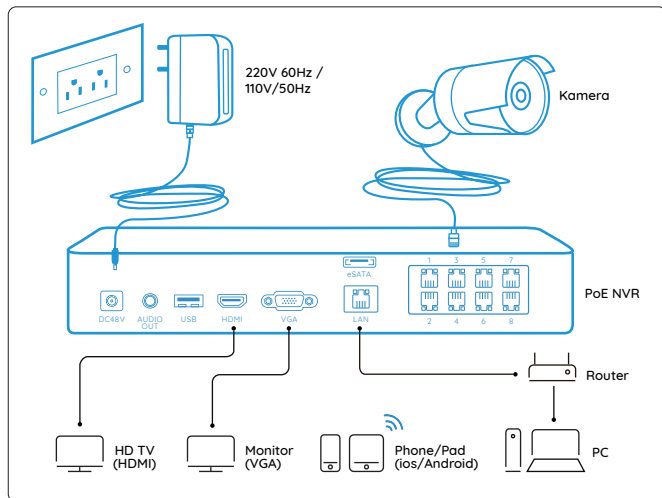


Only Manual Rotation

## Kamera-Anschlussdiagramm

B800 / B400 / D400 kann **NUR** mit dem Reolink POE NVR zusammenarbeiten. Diese Kameras können nicht eigenständig oder mit Software anderer Hersteller arbeiten. Sie können die Kamera über ein Ethernet-Kabel direkt an den Reolink PoE NVR anschließen und die Kamera über die Reolink App, den Reolink Client und den HDMI / VGA-Monitor anzeigen.

Das Verfahren der Verbindung ist wie nachstehend:



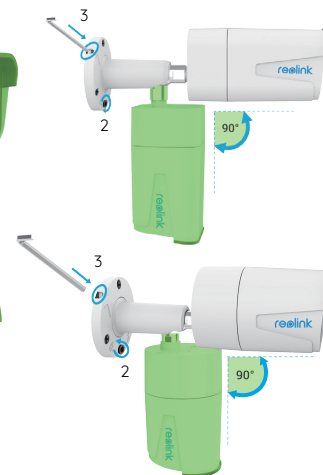
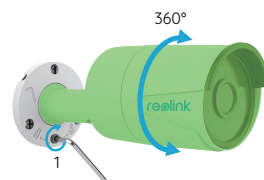
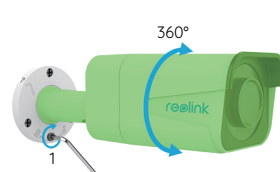
### Hinweis:

**B400 / D400** kann mit Reolink 8-Kanal-POE-NVR-RLN 8-410 und 16-Kanal-POE-NVR-RLN 16-410 arbeiten.

Das **B800** kann **NUR** mit dem Reolink 8-Kanal-POE-NVR RLN8-410 arbeiten.

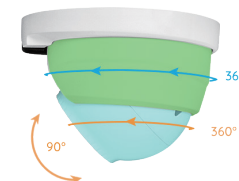
## Adjustierung der Richtung

### • B800 / B400



- 1, Entriegeln Sie die Kamera mittels des Schraubenschlüssels und adjustieren Sie die Kamera(grüner Teil) in jede Richtung.
- 2, Verriegeln Sie die Kamera nach der Adjustierung.
- 3, Bewahren Sie dann den Schraubenschlüssel auf.

### • D400

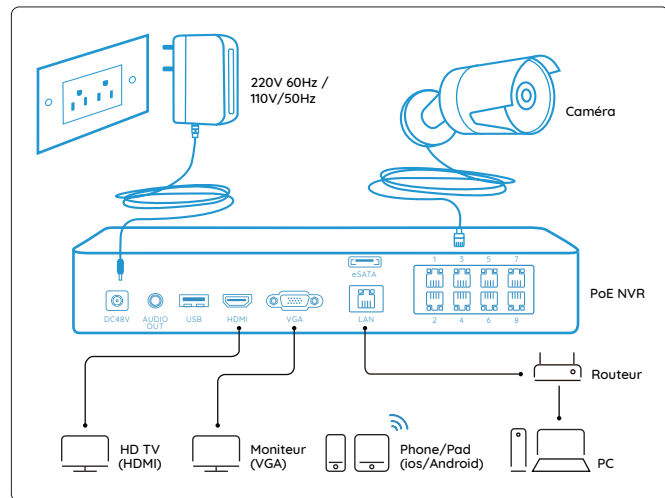


Nur Manuelle Rotation

## Connexion de la caméra

Le B800 / B400 / D400 peut **UNIQUEMENT** fonctionner avec Reolink POE NVR. Ces caméras ne peuvent pas fonctionner seulement ou avec d'autres logiciels tiers. Vous pouvez connecter la caméra directement au Reolink PoE NVR via un câble Ethernet et visualiser la caméra sur l'application Reolink, le client Reolink et le moniteur HDMI / VGA.

Les connexions de câble sont indiquées ci-dessous:



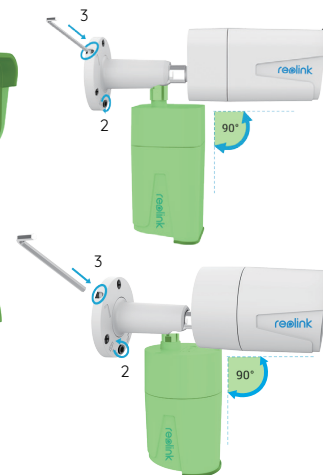
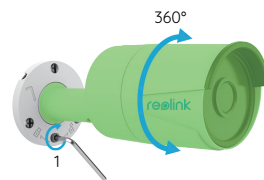
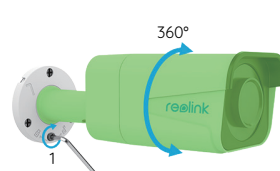
### Note:

**B400 / D400** peut fonctionner avec Reolink 8 canaux POE NVR RLN8-410 et Reolink 16 canaux POE NVR RLN16-410

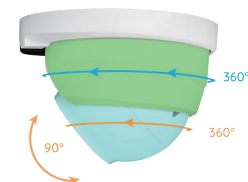
**B800** peut **UNIQUEMENT** fonctionner avec Reolink 8 canaux POE NVR RLN8-410.

## Comment Ajuster la Direction

### • B800 / B400



### • D400



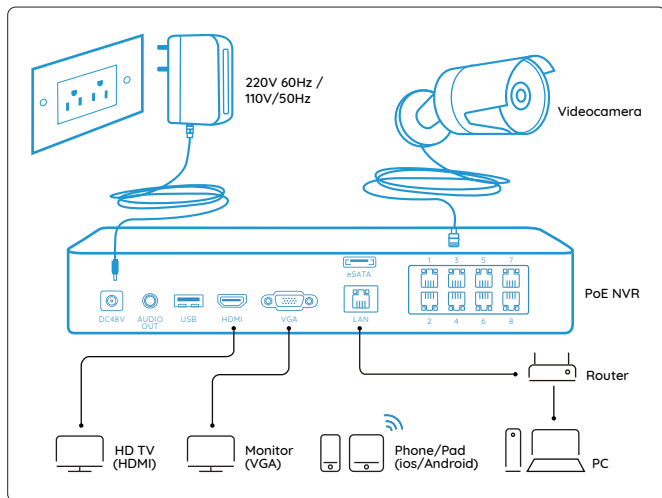
Seulement Rotation Manuelle

1. Tournez-le avec la clé pour déverrouiller et réglez la came (partie verte) dans n'importe quelle direction.
2. Après le réglage, retournez-le pour verrouiller.
3. Rangez la clé ici pour utiliser ultérieurement

## Diagramma di connessione della fotocamera

B800 / B400 / D400 può funzionare **SOLO** con Reolink POE NVR, queste fotocamere non possono funzionare in modalità standalone o con altri software di terze parti. È possibile collegare la fotocamera direttamente a Reolink PoE NVR tramite cavo Ethernet e visualizzare la fotocamera su Reolink App, Reolink Client e monitor HDMI / VGA.

Le connessioni via cavo sono mostrate di seguito:



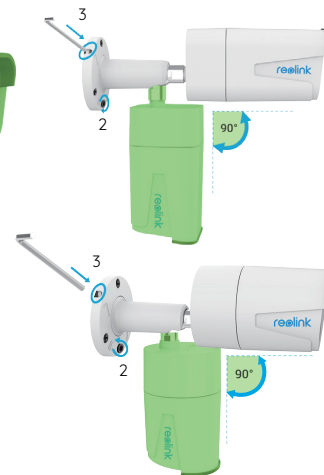
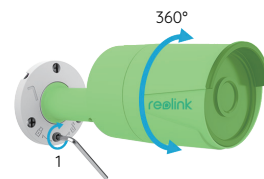
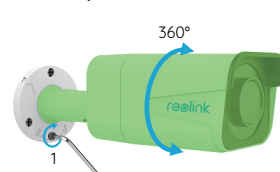
### Nota:

**B400 / D400** può funzionare con Reolink 8 canali POE NVR RLN8-410 e 16 canali POE NVR RLN16-410.

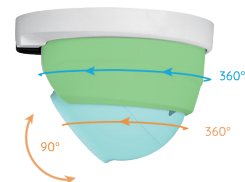
**B800** può funzionare **SOLO** con Reolink 8 canali POE NVR RLN8-410.

## Come regolare la direzione

### • B800 / B400



### • D400



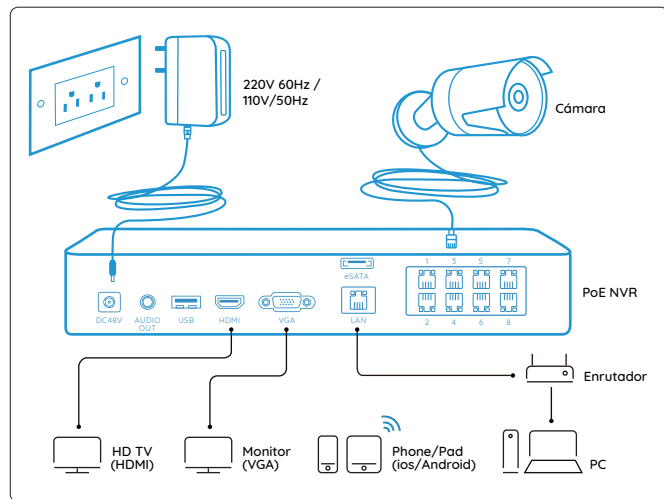
Solo rotazione manuale

1. Torcere con la chiave per sbloccare e regolare la videocamera (parte verde) in qualsiasi direzione.
2. Dopo la regolazione, ruotarla indietro per bloccarlo.
3. Conserva la chiave inglese per un uso successivo.

## Conexión de la cámara

B800 / B400 / D400 SOLO puede funcionar con Reolink POE NVR. Estas cámaras no pueden funcionar de manera independiente o con otro software de terceros. Puede conectar la cámara directamente a Reolink PoE NVR a través del cable Ethernet y ver la cámara en la aplicación Reolink, Reolink Client y el monitor HDMI / VGA.

Las conexiones se realizan de la siguiente manera:



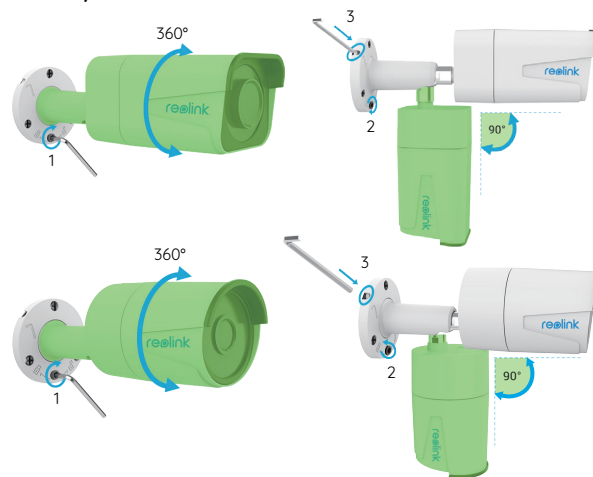
### Nota:

**B400 / D400** puede funcionar con Reolink 8 canales POE NVR RLN8-410 y 16 canales POE NVR RLN16-410.

**B800 SOLO** puede funcionar con Reolink 8 canales POE NVR RLN8-410.

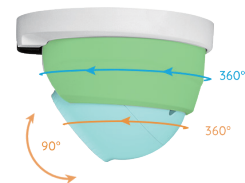
## Cómo ajustar la dirección

### • B800 / B400



1. Gire con una llave inglesa para desbloquear y ajuste la cámara (parte verde) en la dirección de su preferencia.
2. Luego de ajustar, gire nuevamente con la llave para volver a bloquear.
3. Guarde la llave para uso posterior.

### • D400



Rotación manual