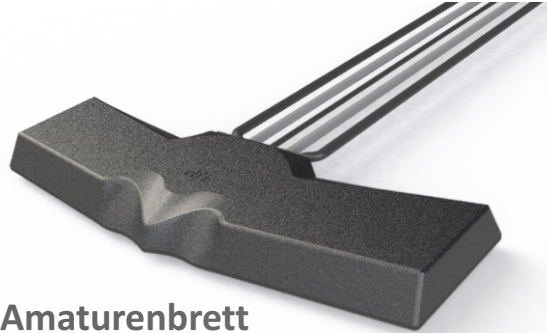


WB 58

Antenne für das Amateurbrett GPS/GNSS, WiFi + MiMo 4G/3G/2G



Artikel Nr.: 103291



Antenne für das Amateurbrett 4G/3G/2G mit optionalen GPS/GNSS & optionalen (MiMo) WiFi

Wird auf oder unter dem Amateurbrett montiert

MiMo 4G/3G/2G

Optionales SiSo oder MiMo WiFi

GPS/GNSS 26dB LNA

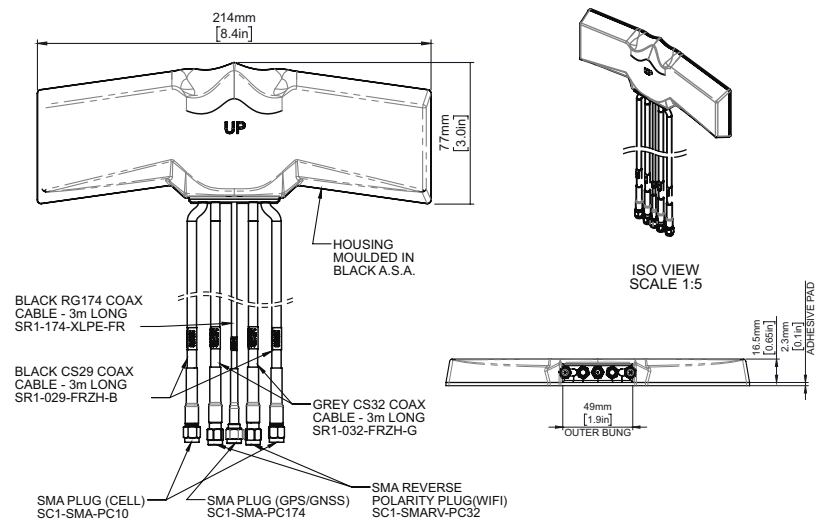
Die WB 58 Antenne wurde für telematische Anwendungen konzipiert, welche eine hohe Datenrate benötigt. Diese wird mit MiMo 4G und fallback 3G/2G realisiert. Optional ist die Antenne auch mit GPS und dual band 2.4/5.8GHz Wifi erhältlich.

Die von einander isolierten LTE Antennen arbeiten auf 698-960/1710-3800MHz und das effiziente Design ermöglicht eine hohe Datenrate und eine gleichbleibend stabile Verbindung auch in Gegenden mit einem schlechten LTE Netz.

Die Antenne wurde gebaut um auf oder unter einem Amateurbrett montiert zu werden, kann aber auch auf allen nicht leitenden Untergründen montiert werden. Die WB 58 wird geliefert mit flammresistenten Kabel und ist somit UN118.01 zertifiziert.

Technical Drawing

BATGM2-7-38-24-58 shown



Wittenberg Antennen und Zubehör UG, 38723 Seesen
www.wittenberg-antennen.de, Mail: team@wittenberg-antennen.de

Dash Mount GPS/GNSS, WiFi + MiMo 4G/3G/2G Antenna



WB 58

| Electrical Data | | | | |
|-----------------------|-----------------------------|---|-----------------------|-----------------------|
| Frequency Range (MHz) | Elements 1&2 | 698-960/1710-3800 | | |
| | Element 3 | 1562-1612MHz | | |
| | Element 4 | 2.4/5.0GHz | | |
| | Element 5 | 2.4/5.0GHz | - | |
| | Elements 1&2 | 2dBi (698-960MHz) / 3dBi (1710-2170MHz) / 5dBi (2500-3800MHz) | | |
| Peak Gain† | Element 4 | 4dBi (2.4GHz) / 5dBi (5.0GHz) | | |
| | Element 5 | 4dBi (2.4GHz) / 5dBi (5.0GHz) | - | |
| Typical VSWR* | Elements 1&2 | <2.5:1 | | |
| | Element 4 | <2.5:1 | | |
| | Element 5 | <2.5:1 | - | |
| Typical Isolation* | Elements 1&2 | >10dB | | |
| Pattern | Omnidirectional | | | |
| Impedance | 50Ω | | | |
| Max input power (W) | 20 | | | |
| GPS/GNSS Data | | | | |
| Frequency Range (MHz) | 1562-1612MHz | | | |
| LNA Peak Gain | 26dB | | | |
| Typical Voltage | 3-5VDC <20ma | | | |
| Type Approval | E11 | | | |
| Mechanical Data | | | | |
| Dimensions (mm) | Length | 214 (8.4") | | |
| | Width | 77 (3") | | |
| | Height | 16.5 (0.65") | | |
| Operating Temp (°C) | -30° / +70°C (-30° / 158°F) | | | |
| Material | ASA | | | |
| Colour | Black | | | |
| Mounting Data | | | | |
| Fixing | Adhesive pad | | | |
| Cable Data | Elements 1&2 (Cell) | Element 3 (GPS/GNSS) | Element 4 (WiFi) | Element 5 (WiFi) |
| Cable Type | FR CS29 (meets UN118.01) | FR RG174 (meets UN118.01) | CS32 (meets UN118.01) | CS32 (meets UN118.01) |
| Diameter (mm) | 5 (0.2") | 2.8 (0.11") | 5 (0.2") | 5 (0.2") |
| Length (m) | 3 (10') | 3 (10') | 3 (10') | 3 (10') |
| Termination | | | | |
| BATGMF2-7-38-24-58 | 2x FAKRA D Jack (Burgundy) | FAKRA C Jack (Blue) | FAKRA I Jack (Beige) | FAKRA I Jack (Beige) |
| BATGMF-7-38-24-58 | 2x FAKRA D Jack (Burgundy) | FAKRA C Jack (Blue) | FAKRA I Jack (Beige) | - |
| BATGM2-7-38-24-58 | 2x SMA Plug (m) | SMA Plug (m) | Rev Pol SMA Plug (f) | Rev Pol SMA Plug (f) |
| BATGM-7-38-24-58 | 2x SMA Plug (m) | SMA Plug (m) | Rev Pol SMA Plug (f) | - |

† Peak gain does not include cable attenuation *VSWR & Isolation measured on 3mm thick ASA with 3m (10') of CS29 cable

Mount GPS/GNSS, WiFi + MiMo 4G/3G/2G Antenna

WITTENBERG

www.wittenberg-antennen.de

WB 58

Electrical Data

| | | |
|-----------------------|--------------|---|
| Frequency Range (MHz) | Elements 1&2 | 698-960/1710-3800 |
| | Element 3 | 1562-1612MHz |
| Peak Gain† | Elements 1&2 | 2dBi (698-960MHz) / 3dBi (1710-2170MHz) / 5dBi (2500-3800MHz) |
| Typical VSWR* | Elements 1&2 | <2.5:1 |
| Typical Isolation* | Elements 1&2 | >10dB |
| Pattern | | Omni-directional |
| Impedance | | 50Ω |
| Max input power (W) | | 20 |

GPS/GNSS Data

| | |
|-----------------------|--------------|
| Frequency Range (MHz) | 1562-1612MHz |
| LNA Peak Gain | 26dB |
| Typical Voltage | 3-5VDC <20ma |
| Type Approval | E11 |

Mechanical Data

| | | |
|---------------------|--------|-----------------------------|
| Dimensions (mm) | Length | 214 (8.4") |
| | Width | 77 (3") |
| | Height | 16.5 (0.65") |
| Operating Temp (°C) | | -30° / +70°C (-30° / 158°F) |
| Material | | ASA |
| Colour | | Black |

Mounting Data

| | |
|--------|--------------|
| Fixing | Adhesive pad |
|--------|--------------|

Cable Data

| | Elements 1&2 (Cell) | Element 3 (GPS/GNSS) |
|---------------|--------------------------|---------------------------|
| Cable Type | FR CS29 (meets UN118.01) | FR RG174 (meets UN118.01) |
| Diameter (mm) | 5 (0.2") | 2.8 (0.11") |
| Length (m) | 3 (10') | 3 (10') |

Termination

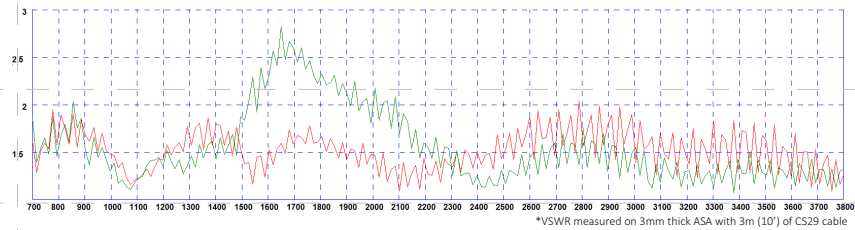
| | | |
|------------|----------------------------|---------------------|
| BATGF-7-27 | 2x FAKRA D Jack (Burgundy) | FAKRA C Jack (Blue) |
| BATG-7-27 | 2x SMA Plug (m) | SMA Plug (m) |

Dash Mount GPS/GNSS, WiFi + MiMo 4G/3G/2G Antenna

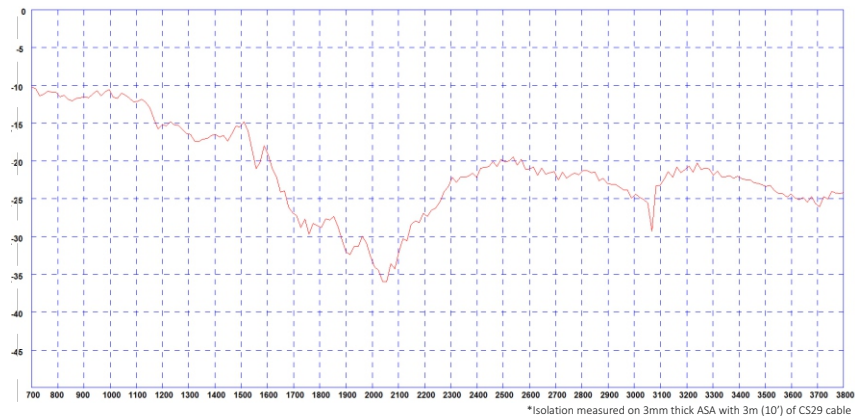
WB 58

Electrical Data - Cell

Typical VSWR Elements 1&2*

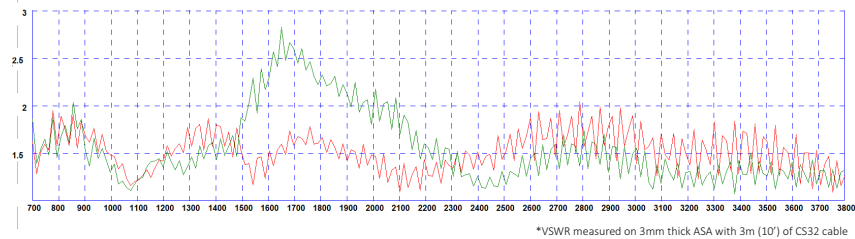


Typical Isolation Elements 1&2*



Electrical Data- WiFi

Typical VSWR Elements 4&5*

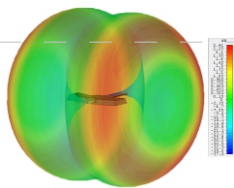


**Dash Mount GPS/GNSS, WiFi +
MiMo 4G/3G/2G Antenna**

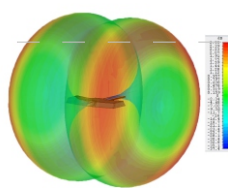
WB 58

3G Patterns - Cell

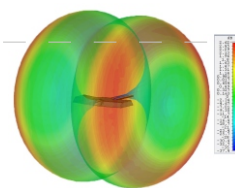
Typical 3D Pattern - 700MHz Elements 1&2 fed



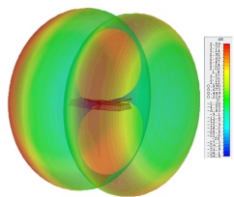
Typical 3D Pattern - 800MHz Elements 1&2 fed



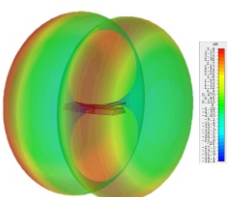
Typical 3D Pattern - 900MHz Elements 1&2 fed



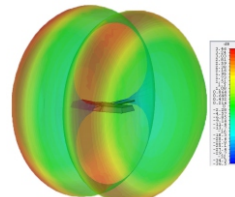
Typical 3D Pattern - 1800MHz Elements 1&2 fed



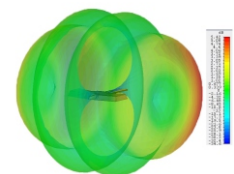
Typical 3D Pattern -1900MHz Elements 1&2 fed



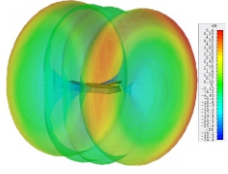
Typical 3D Pattern - 2100MHz Elements 1&2 fed



Typical 3D Pattern - 2600MHz Elements 1&2 fed

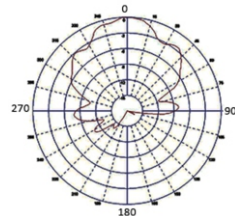


Typical 3D Pattern -3600MHz Elements 1&2 fed

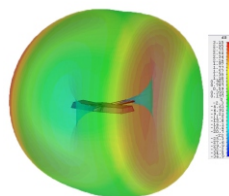


Pattern -GNSS

Typical E Plane GPS/GNSS - 1575MHz Element 3



Typical 3D Pattern - 2.4GHz Elements 4&5 fed



3D Patterns -WiFi

Typical 3D Pattern - 5.4GHz Elements 4&5 fed

