



Geräte für Haus und Garten

Sprühlanzen-Pflanzenschutz Set

MULTIJET SYSTEM

Spray pipe plant protection set

MULTIJET SYSTEM

Kit de protection phytosanitaire à lance de pulvérisation

MULTIJET SYSTEM

Straalpijp-Plantenbeschermingsset

MULTIJET SYSTEM

Lancia - Set fitosanitari

MULTIJET SYSTEM

Sprøjetlans-plantebeskyttelsesæt

MULTIJET SYSTEM



ACHTUNG Dieses "Sprühlanzen-Pflanzenschutz Set" gilt als Zubehör für die GLORIA MULTIJET Geräte und nur in Verbindung mit dem Universal Behälter!

ATTENTION This "spray lance plant protection set" is an accessory for the GLORIA MULTIJET devices and only in connection with the universal container!

ATTENTION Ce « lance de pulvérisation / kit de protection phytosanitaire » est un accessoire destiné aux appareils GLORIA MULTIJET et uniquement en association avec le réservoir universel!

ATTENTIE Deze "straalpijp-Plantenbeschermingsset" is een accessoire voor GLORIA MULTIJET-apparaten en alleen te gebruiken in combinatie met het universele reservoir!

ATTENZIONE Il "lancia / Set fitosanitari" è un accessorio pensato per i dispositivi GLORIA MULTIJET che può essere utilizzato congiuntamente al serbatoio universale!

OBBS Dette "sprøjetlans-plantebeskyttelsesæt" bruges som tilbehør til GLORIA MULTIJET apparater og kun i forbindelse med Universal beholderen!

Betriebsanleitung

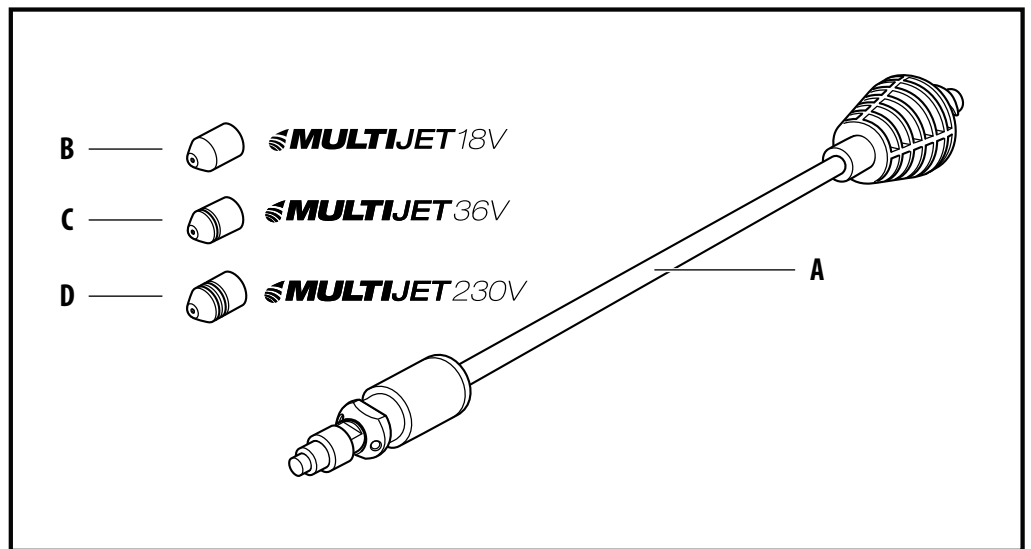
User manual

Mode d'emploi

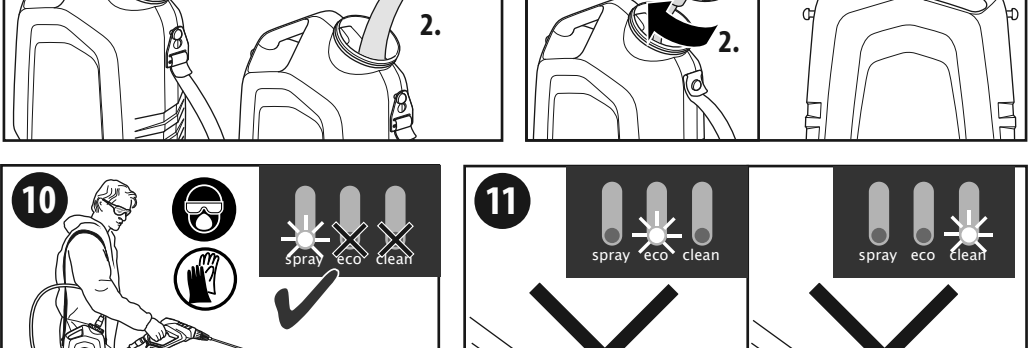
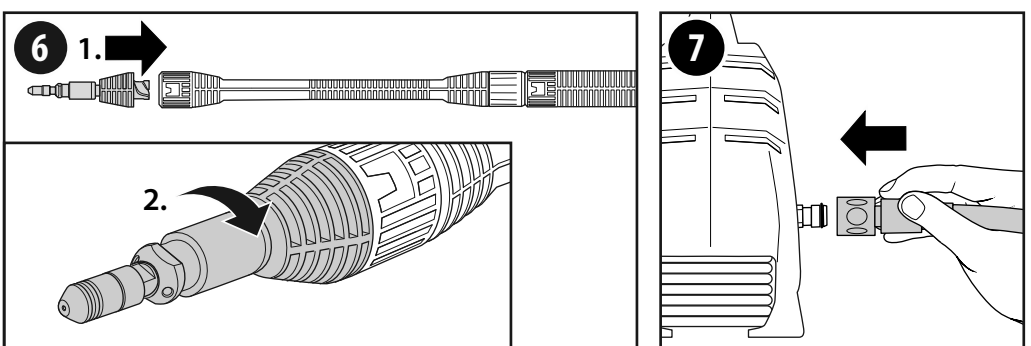
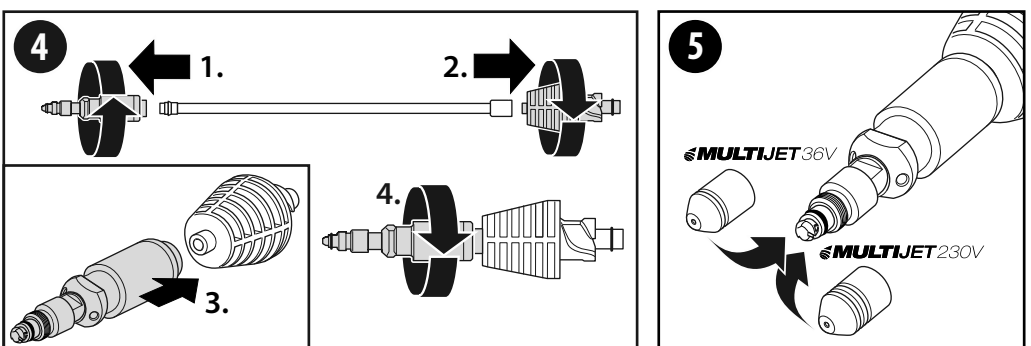
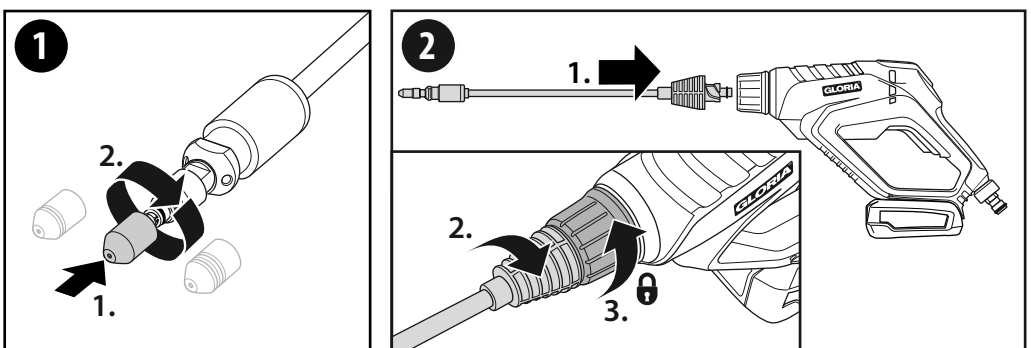
Gebruiksaanwijzing

Instruzioni per l'uso

Betjeningsvejledning

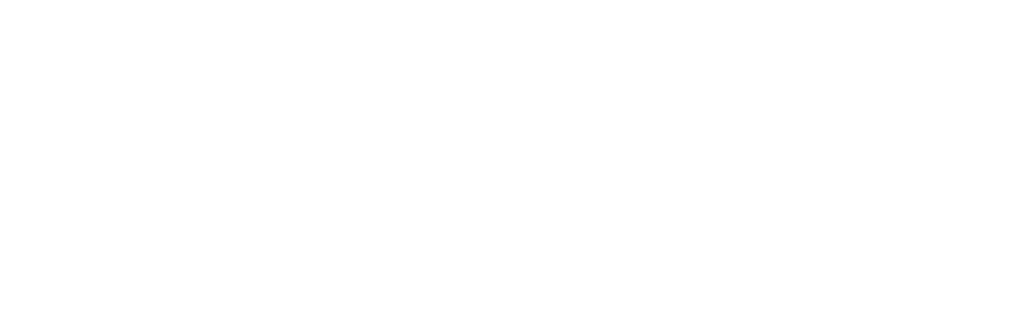
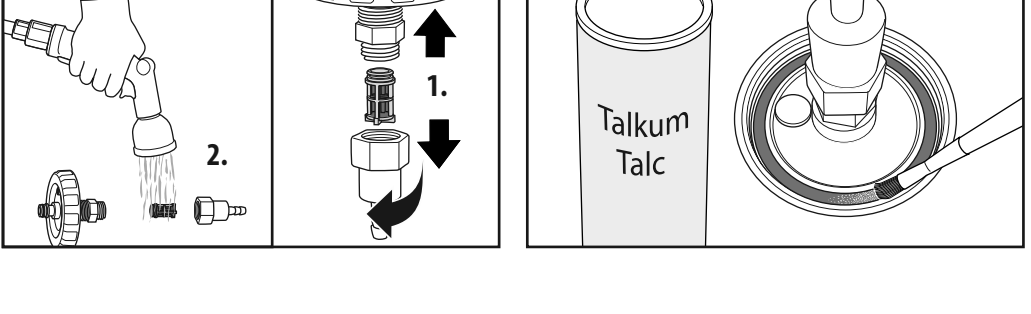
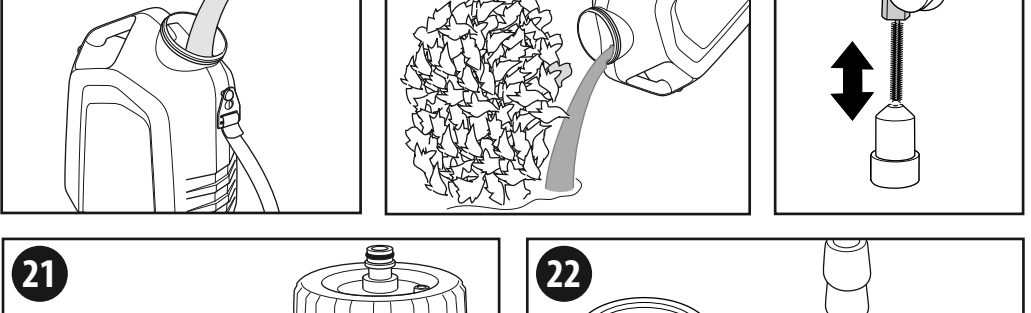
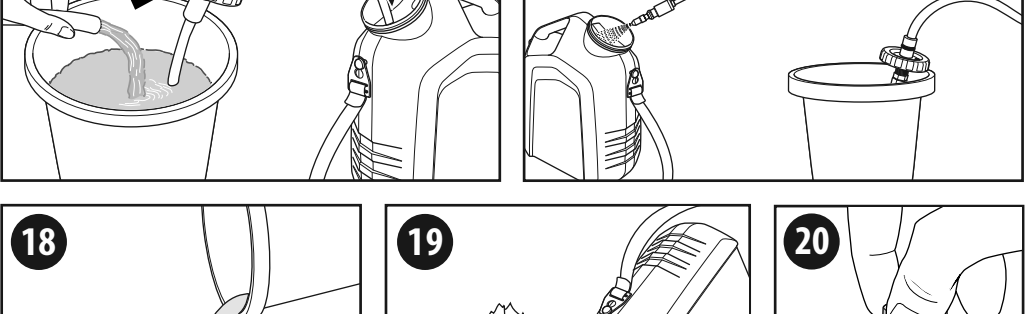
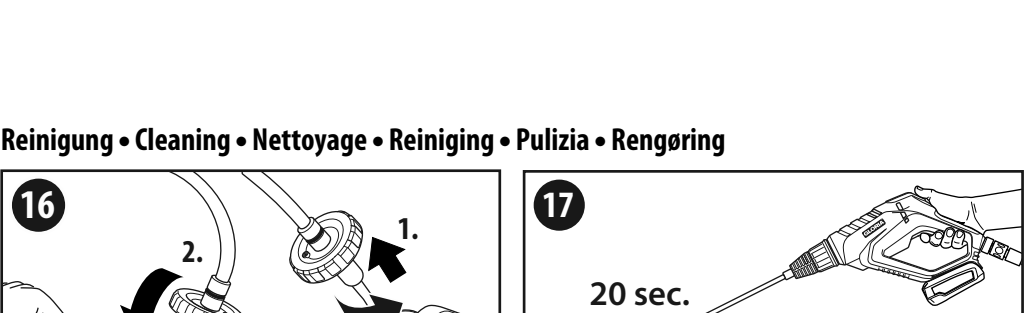
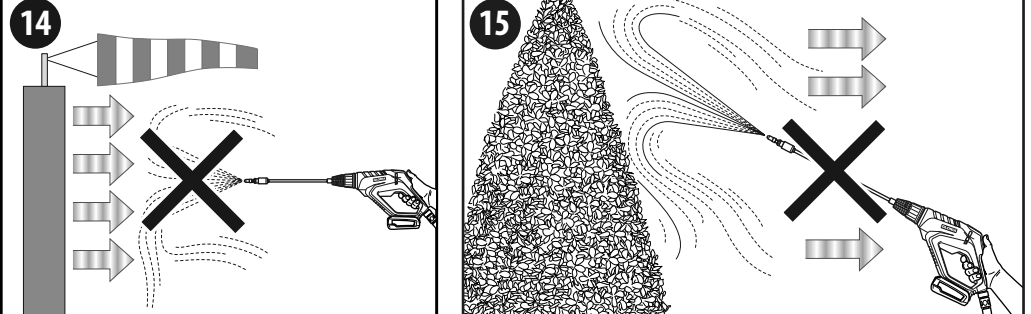
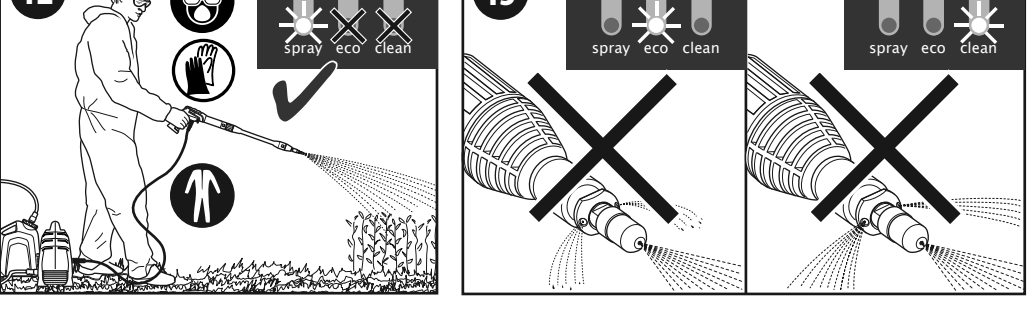


Montage • Assembly • Montage • Montage • Montaggio • Monterig



Inbetriebnahme • Commissioning • Mise en service

Inbedrijfstelling • Messa in funzione • Idriftsætelse



1 Allgemeine Informationen zu dieser Bedienungsanleitung

Diese Bedienungsanleitung ist Bestandteil des GLORIA "Sprühlanzen-Pflanzenschutz Set" und muss ständig am oder in der Nähe des Gerätes verfügbar sein.

1.1 Symbolik in der Anleitung

Die Bedienungsanleitung muss von jeder Person, die mit der Bedienung / Nutzung / Wartung des "Sprühlanzen-Pflanzenschutz Set" beauftragt ist, vollständig gelesen werden.

KEINE explosiven, hochentzündlichen, leichtentzündlichen, brennbaren Flüssigkeiten versprühen.

Sprühstrahl niemals auf Personen oder Tiere richten.

Entsorgung von Abgeraten NICHT über den normalen Hausmüll.

Umweltgerechte Entsorgung!

Recyclebare Verpackungsmaterialien!

1.2 Warnhinweise

Ein Warnhinweis dieser Gefahrenstufe kennzeichnet eine lebensgefährliche Situation.

Ein Warnhinweis dieser Gefahrenstufe kennzeichnet eine mögliche drohende gefährliche Situation.

Ein Warnhinweis dieser Gefahrenstufe kennzeichnet eine mögliche gefährliche Situation.

Ein Warnhinweis dieser Gefahrenstufe kennzeichnet einen möglichen Sachschaden.

Ein Hinweis kennzeichnet zusätzliche Informationen oder Abbildungen, die Ihnen die Bedienung und das Verständnis für die "Sprühlanzen-Pflanzenschutz Set" erleichtern sollen.

1.3 Bestimmungsgemäße Verwendung

Dieses "Sprühlanzen-Pflanzenschutz Set" ist nur in Verbindung mit dem Universalbehälter (Art.-Nr. 729164.0000) sowie einem GLORIA MultiJet-Gerät zu verwenden.

1.4 Vermintgerissegere vorhersehbare Fehlanwendung

Das "Sprühlanzen-Pflanzenschutz Set" ist nicht geeignet für explosive, hochentzündliche, leichtentzündliche, brennbare Flüssigkeiten, Disinfectants und Imprägnierungsmittel sowie Stoffe über 40° C.

2 Zu Ihrer Sicherheit

Beachten und verstehen Sie ebenfalls die Sicherheitshinweise in der entsprechenden GLORIA MULTIJET Anleitung!

Vor jeder Inbetriebnahme des "Sprühlanzen-Pflanzenschutz Set" Flüssigkeitsbehälter regelmäßig auf einwandfreien Zustand und Funktion prüfen.

Bei Verzicht auf Schichten "Sprühlanzen-Pflanzenschutz Set" sofort außer Betrieb setzen.

Sprühgeräte und -mittel von Kindern und Jugendlichen unter 16 Jahren fernhalten.

Beim Abschrauben von Sprührohren das Ende nicht gegen sich richten.

Bei Verzicht auf Schichten "Sprühlanzen-Pflanzenschutz Set" sofort außer Betrieb setzen.

Die "Sprühlanzen-Pflanzenschutz Set" ist nicht geeignet für explosive, hochentzündliche, leichtentzündliche, brennbare Flüssigkeiten, Disinfectants und Imprägnierungsmittel sowie Stoffe über 40° C.

Bei Reparaturen nur Original GLORIA Ersatzteile verwenden (https://shop.gloriagarten.de).

Dichtungen regelmäßig mit GLORIA Silikonfett bestreichen.

Weitere Zubehör finden Sie unter www.gloriagarten.de.

8 Lagerung

9 Zubehör / Ersatzteile

10 Entsorgung

11

12

13

14

15

16

17

18

19

20

21

22

23

24

25

26

27

28

29

30

31

32

33

34

35

36

37

38

39

40

41

42

43

44

45

46

47

48

49

50

51

52

53

54

55

56

57

58

59

60

61

62

63

64

65

66

67

68

69

70

71

72

73

74

75

76

77

78

79

80

81

82

83

84

85

86

87

88

89

90

91

92

93

94

95

96

97

98

99

100

101

102

103

104

105

106

107

108

109

110

111

112

113

114

115

116

117

118

119

120

121

122

123

124

125

126

127

128

129

130

131

132

133

134

135

136

137

138

139

140

141

142

143

144

145

146

147

148

149

150

151

152

153

154

155

156

157

158

159

160

161

162

163

164

165

166

167

168

169

170

171

172

173

174

175

176

177

178

179

180

181

182

183

184

185

186

187

188

189

190

191

192

193

194

195

196

197

198

199

200

201

202

203

204

205

206

207

208

209

210

211

212

213

214

215

216

217

218

219

220

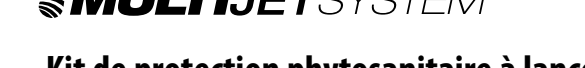


Geräte für Haus und Garten

Sprühlanzen-Pflanzenschutz Set



Spray pipe plant protection set



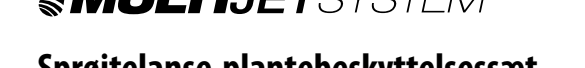
Kit de protection phytosanitaire à lance de pulvérisation



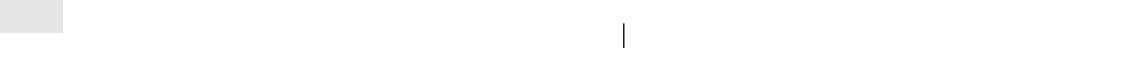
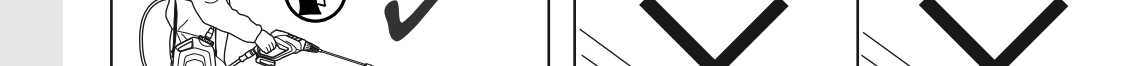
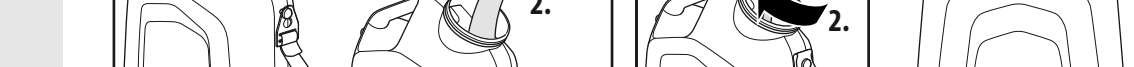
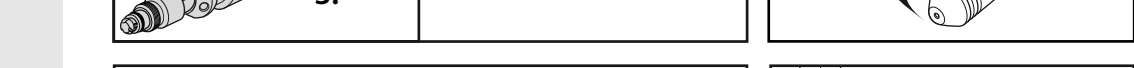
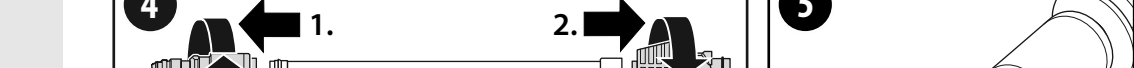
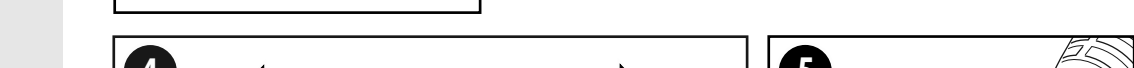
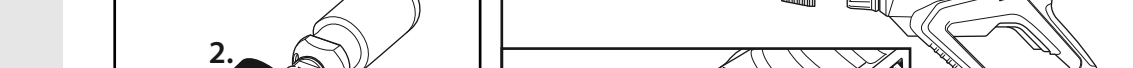
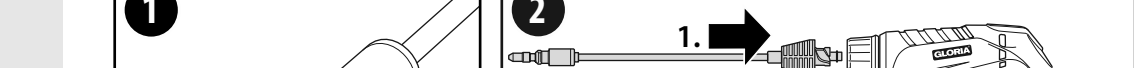
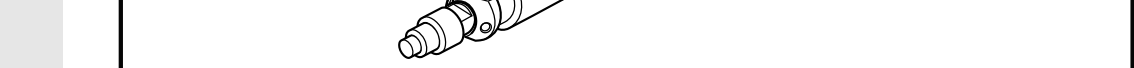
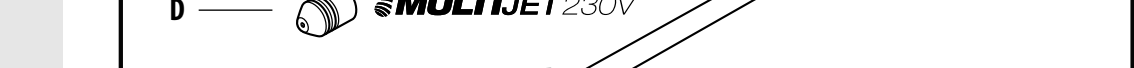
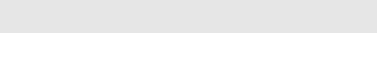
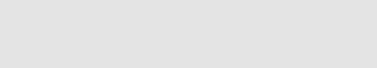
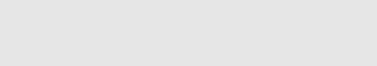
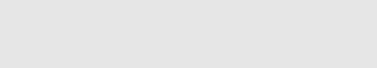
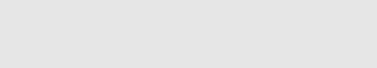
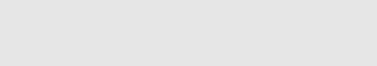
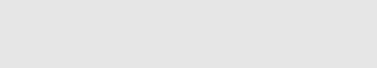
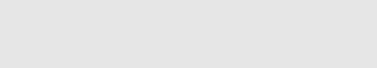
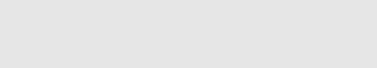
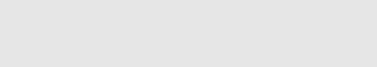
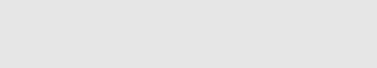
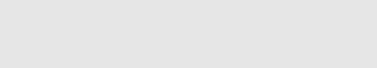
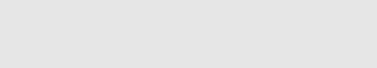
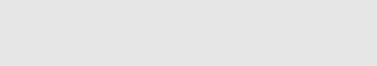
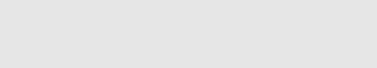
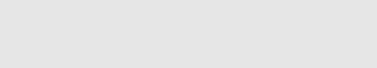
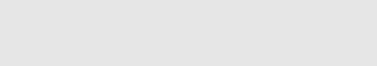
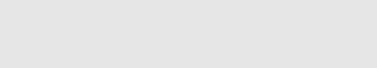
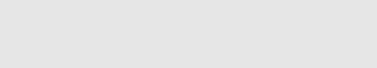
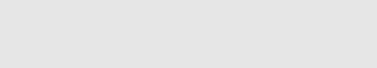
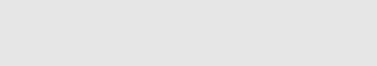
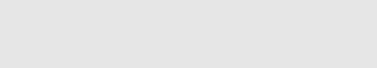
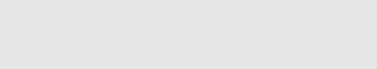
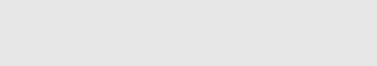
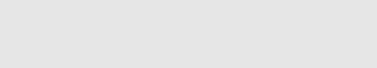
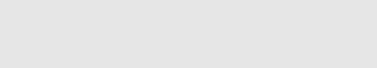
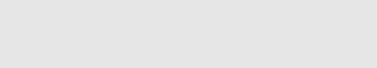
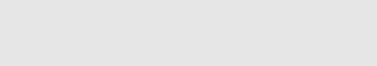
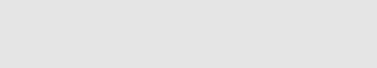
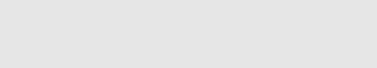
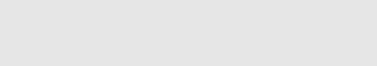
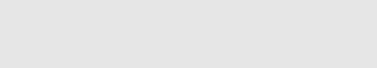
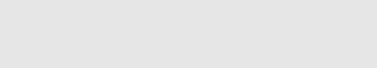
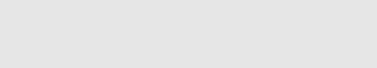
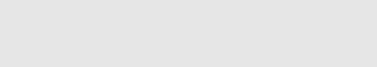
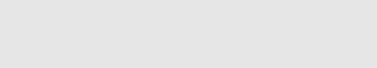
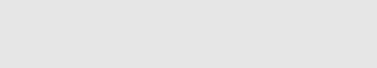
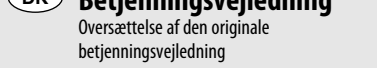
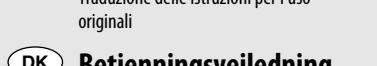
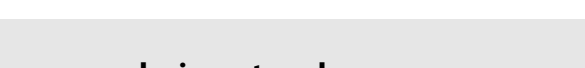
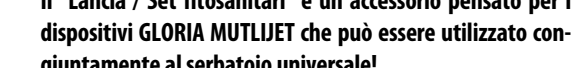
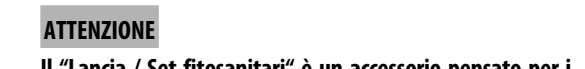
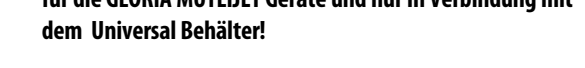
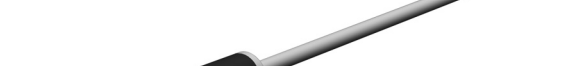
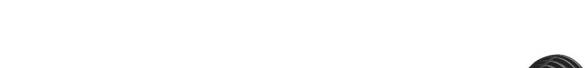
Straalpijp-Plantenbeschermingsset



Lancia - Set fitosanitari



Sprøjtelanse-plantebeskyttelsesæt



ACHTUNG

Dieses "Sprühlanzen-Pflanzenschutz Set" gilt als Zubehör für die GLORIA MULTIJET Geräte und nur in Verbindung mit dem Universal Behälter!

ATTENTION

This "spray lance plant protection set" is an accessory for the GLORIA MULTIJET devices and only in connection with the universal container!

ATTENZIONE

Ce « lance de pulvérisation / kit de protection phytosanitaire » est un accessoire destiné aux appareils GLORIA MULTIJET et uniquement en association avec le réservoir universel!

ATTENTIE

Deze "Straalpijp-Plantenbeschermingsset" is een accessoire voor GLORIA MULTIJET-apparaten en alleen te gebruiken in combinatie met het universele reservoirtankje!

ATTENZIONE

Il "Lancia / Set fitosanitari" è un accessorio pensato per i dispositivi GLORIA MULTIJET che può essere utilizzato congiuntamente al serbatoio universale!

OBBS

Dette "sprøjtelanse-plantebeskyttelsesæt" bruges som tilbehør til GLORIA MULTIJET apparater og kun i forbindelse med Universal beholderen!

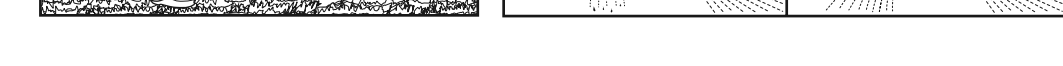
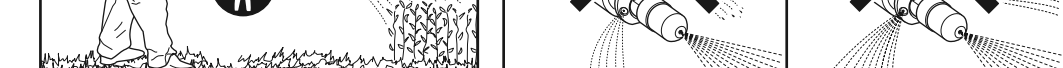
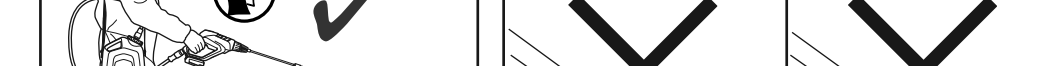
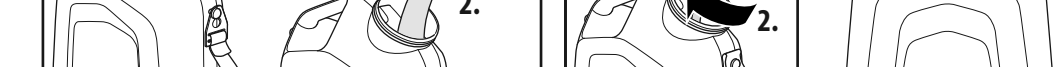
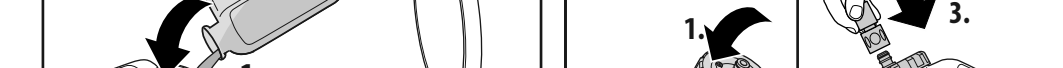
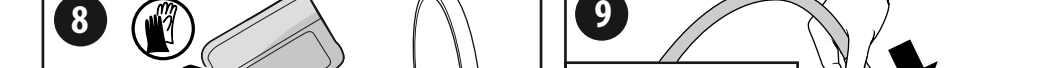
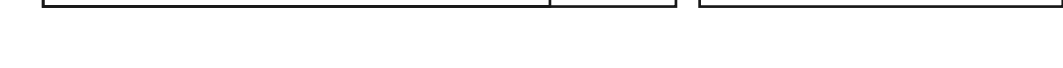
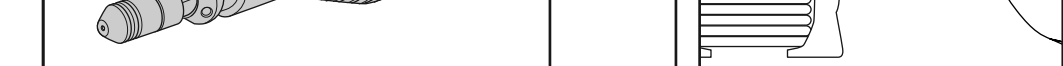
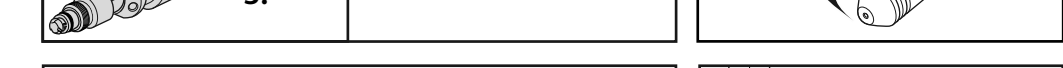
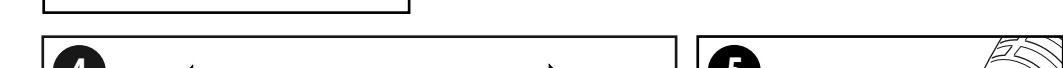
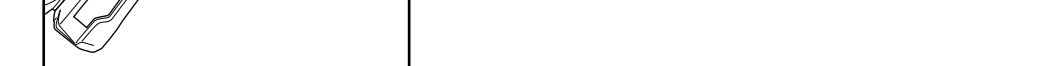
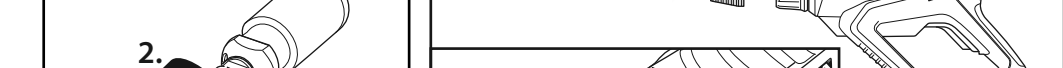
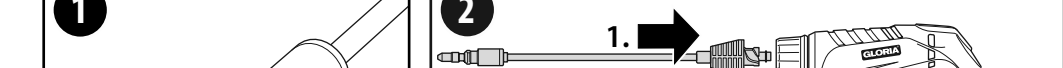
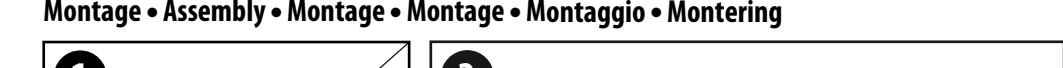
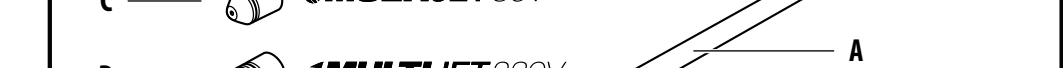
ATTENZIONE

Il "Lancia / Set fitosanitari" è un accessorio pensato per i dispositivi GLORIA MULTIJET che può essere utilizzato congiuntamente al serbatoio universale!

ATTENZIONE

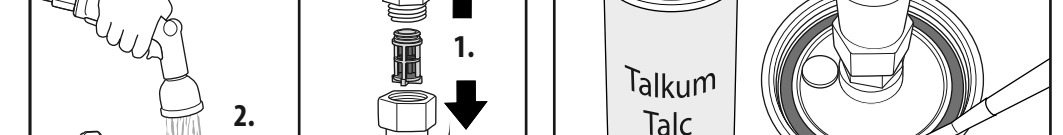
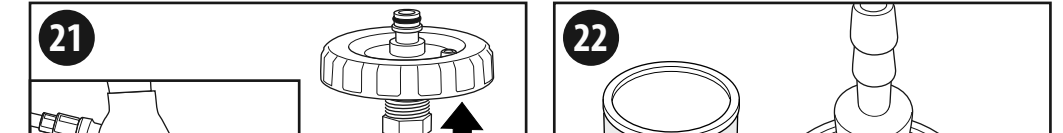
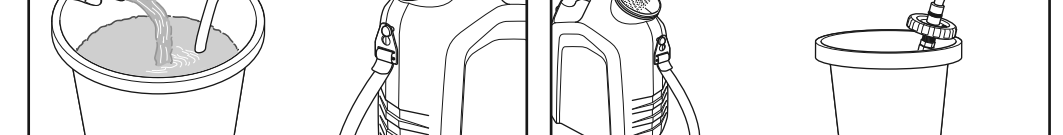
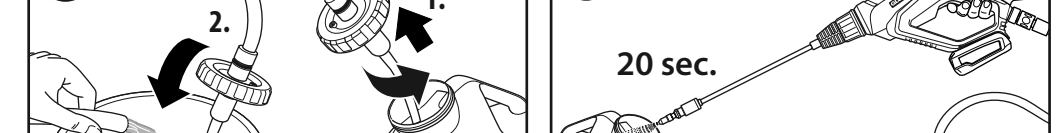
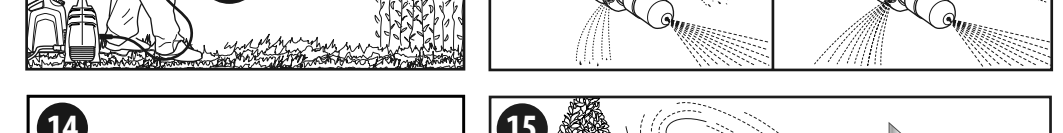
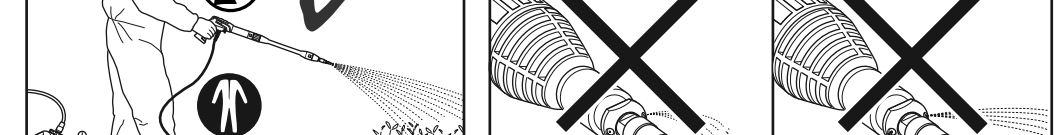
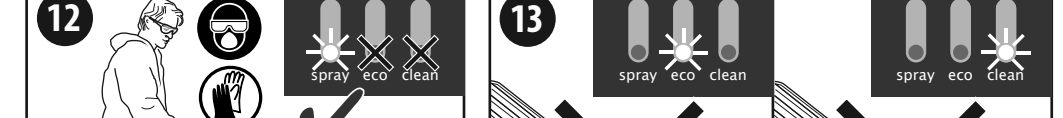
Il "Lancia / Set fitosanitari" è un accessorio pensato per i dispositivi GLORIA MULTIJET che può essere utilizzato congiuntamente al serbatoio universale!

www.gloriagarten.de

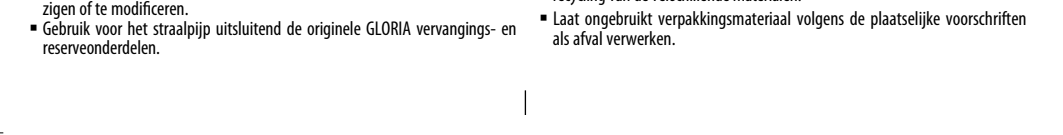
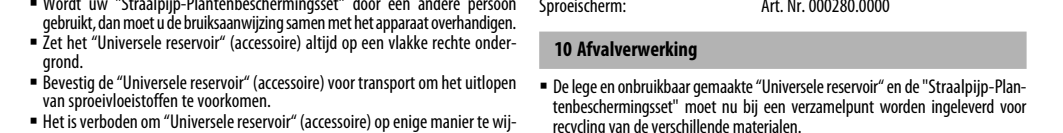
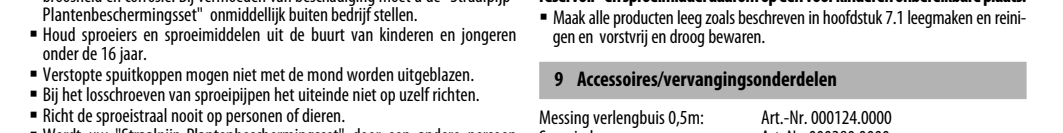
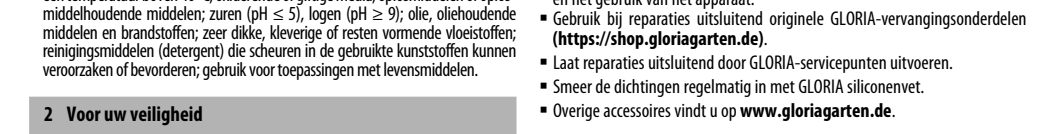
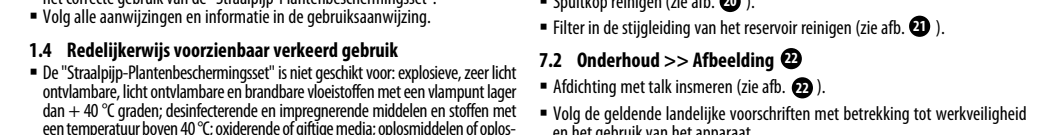
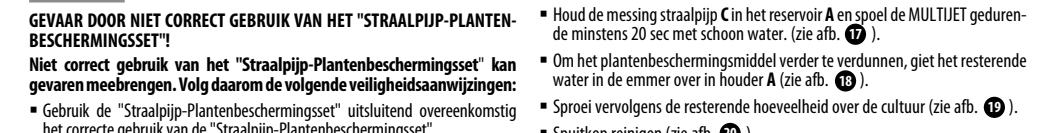
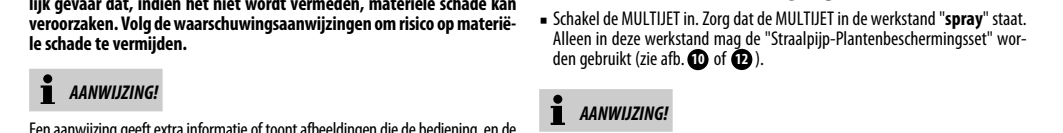
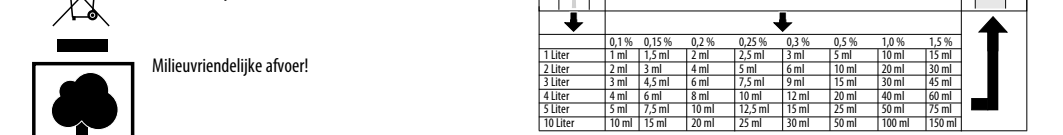
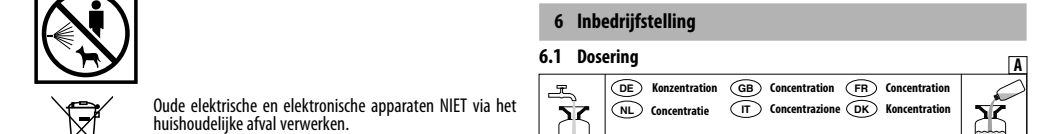
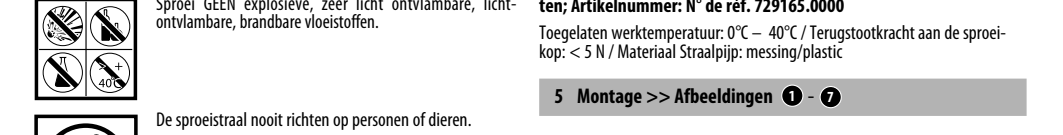
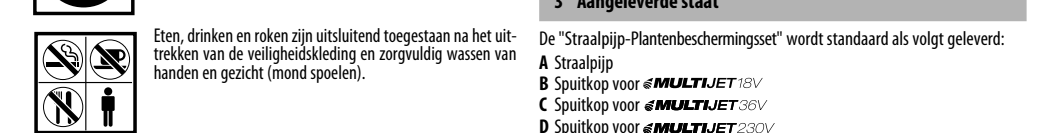
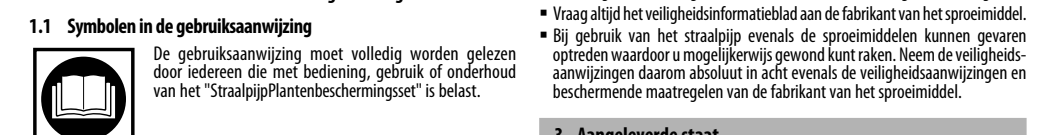


Inbetriebnahme • Commissioning • Mise en service

Inbedrijfstelling • Messa in funzione • Idriftsættelse



1.1 Simboli nelle istruzioni



1.1 Informazioni generali sulle presenti istruzioni per l'uso

Le presenti istruzioni per l'uso sono parte integrante del "Lancia / Set fitosanitari" GLORIA e devono essere sempre a portata di mano nel pressi dello stesso. Le istruzioni per l'uso forniscono importanti avvertenze e informazioni per l'uso sicuro dell'apparecchio. Prestare attenzione alla concentrazione max. indicata. Indossare abiti e occhiali protettivi.

1.1 Simboli nelle istruzioni
Qualsiasi persona preposta al comando, all'utilizzo e alla manutenzione del "Lancia / Set fitosanitari", deve leggere per intero le istruzioni per l'uso.

3. Angolo di vista
De "Straalpijp-Plantenbeschermingsset" wordt standaard als volgt gebruikt:
A Straalpijp
B Spuitkop voor #MULTIJET 18V
C Spuitkop voor #MULTIJET 36V
D Spuitkop voor #MULTIJET 230V

4. Dati tecnici
"Lancia / Set fitosanitari" per MULTIJET GLORIA:
Codice articolo: 729165.0000
Temperatura di esercizio consentita: 0°C - 40°C
Forza impulsiva sull'acqua: < 5 N
Materiale Lancia: ottone/plastica

5. Montaggio >>> Figure 1-3
6. Messa in funzione
6.1 Dosaggio
Tabella con dati di dosaggio per diverse piante e prodotti.

6.2 Riempimento e collegamento del serbatoio >>> Figure 4-5
6.3 Nebulizzazione >>> Figure 6-7
6.4 Messaggio di pulizia >>> Figure 8-9

7. Messa fuori servizio
7.1 Svuotamento e pulizia >>> Figure 10-11
7.2 Manutenzione >>> Figure 12-13

8. Opslag
9. Accessori / ricambi
10. Smaltimento

11. Rischio per la salute
12. Avvertenze

13. Avvertenze
14. Avvertenze
15. Avvertenze

16. Avvertenze
17. Avvertenze
18. Avvertenze

19. Avvertenze
20. Avvertenze
21. Avvertenze

22. Avvertenze
23. Avvertenze
24. Avvertenze

25. Avvertenze
26. Avvertenze
27. Avvertenze

28. Avvertenze
29. Avvertenze
30. Avvertenze

31. Avvertenze
32. Avvertenze
33. Avvertenze

34. Avvertenze
35. Avvertenze
36. Avvertenze

37. Avvertenze
38. Avvertenze
39. Avvertenze

40. Avvertenze
41. Avvertenze
42. Avvertenze

43. Avvertenze
44. Avvertenze
45. Avvertenze

46. Avvertenze
47. Avvertenze
48. Avvertenze

49. Avvertenze
50. Avvertenze
51. Avvertenze

52. Avvertenze
53. Avvertenze
54. Avvertenze

55. Avvertenze
56. Avvertenze
57. Avvertenze

1.1 Informazioni generali sulle presenti istruzioni per l'uso

Le presenti istruzioni per l'uso sono parte integrante del "Lancia / Set fitosanitari" GLORIA e devono essere sempre a portata di mano nel pressi dello stesso. Le istruzioni per l'uso forniscono importanti avvertenze e informazioni per l'uso sicuro dell'apparecchio. Prestare attenzione alla concentrazione max. indicata. Indossare abiti e occhiali protettivi.

1.1 Simboli nelle istruzioni
Qualsiasi persona preposta al comando, all'utilizzo e alla manutenzione del "Lancia / Set fitosanitari", deve leggere per intero le istruzioni per l'uso.

3. Angolo di vista
De "Straalpijp-Plantenbeschermingsset" wordt standaard als volgt gebruikt:
A Straalpijp
B Spuitkop voor #MULTIJET 18V
C Spuitkop voor #MULTIJET 36V
D Spuitkop voor #MULTIJET 230V

4. Dati tecnici
"Lancia / Set fitosanitari" per MULTIJET GLORIA:
Codice articolo: 729165.0000
Temperatura di esercizio consentita: 0°C - 40°C
Forza impulsiva sull'acqua: < 5 N
Materiale Lancia: ottone/plastica

5. Montaggio >>> Figure 1-3
6. Messa in funzione
6.1 Dosaggio
Tabella con dati di dosaggio per diverse piante e prodotti.

6.2 Riempimento e collegamento del serbatoio >>> Figure 4-5
6.3 Nebulizzazione >>> Figure 6-7
6.4 Messaggio di pulizia >>> Figure 8-9

7. Messa fuori servizio
7.1 Svuotamento e pulizia >>> Figure 10-11
7.2 Manutenzione >>> Figure 12-13

8. Opslag
9. Accessori / ricambi
10. Smaltimento

11. Rischio per la salute