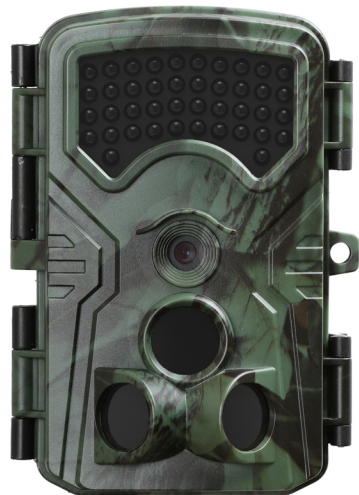


BRAUN SCOUTING CAM BLACK 1300 User Manual



Before installing and using the camera, please read this instruction carefully

1. Introduction

Thank you for choosing one of our products.

1.1 Application

This trail camera is an ideal product for housing security, warehouse surveillance, and monitoring wild animals with its camouflage appearance and nice shape. It is convenient to install or fasten.

- A. Instant surveillance camera for home, office, construction site, and warehouse, etc
- B. Motion-triggered infra-red night vision surveillance
- C. Animal observation and hunting

1.2 Power Supply

A. AA Alkaline Batteries
This camera can either work with 4 or 8pcs AA Alkaline batteries. **Please note that the voltage of rechargeable AA batteries (1.2V) is insufficient to power this device.** Batteries electrode may cause device malfunction. Also, we strongly recommend changing the batteries when power icon on camera screen is empty.

Do not mix old and new batteries.
Do not mix battery types-use ALL lithium or all alkaline.
Rechargeable batteries are not recommended.

A. Power Adaptor
This camera can also be powered by an external 6V/2A DC adaptor. Recommend to remove the alkaline batteries when power adaptor is used to avoid surcharging.

1.3 Attention

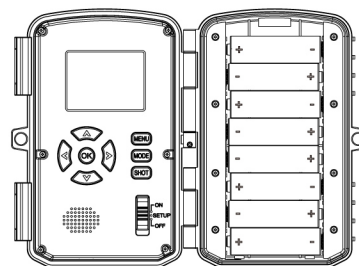
- A. Insert the SD memory card correctly
- B. Please use AA battery with good quality in order to prevent battery cells from corrosion of leaked acid
- C. Use right adaptor (6V/2A) of this camera to supply power, and do not invert the electrode when put in batteries.
- D. Do not interrupt power supply during system upgrade
- E. Do not keep camera next to hot irrelevant objects, air conditioner exhaust vents, and light, etc. to avoid mistaking photos or videos.

1.4 Key Features

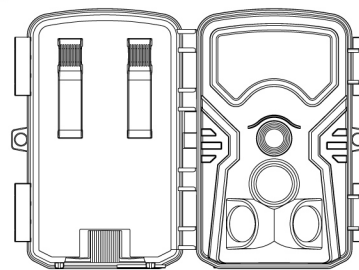
1. 13MP CMOS sensor.
2. 40pcs IR LED flash to cover a range of 20 meters.
3. Adjustable PIR sensitivity.
4. Impressive quick trigger time: 0.5 sec
5. Adjustable delay between motions.
6. 4 or 8pcs AA alkaline batteries, stand by 6 months.
7. Excellent image quality during daytime, transition time and night time.
8. Time lapse picture or video (Depending on the setting)
9. No motion blur technology under low light situations at 2 feet per second regular motion speed.
10. Up to 20 meter flash and detection range.
11. Camouflage housing cover.
12. Up to 128GB SD card.

2. Whole view

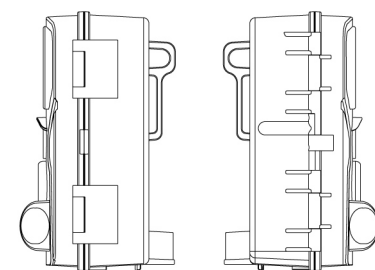
Interior



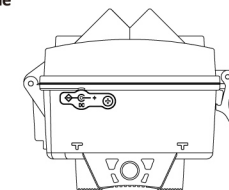
Exterior



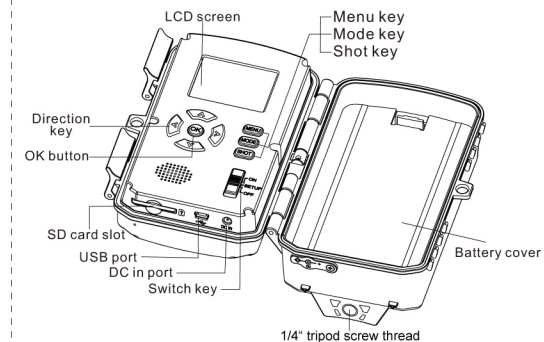
Right/left side



Bottom Side



Inter-structure



Switch key	ON gear, the device enters the automatic monitoring and shooting state, and automatically takes photos or videos. SETUP gear, users can modify settings, preview, test shot and playback photo and video. OFF gear, turn off the device.
*MENU key	Shift to "settings" menu.
*MODE key	Switch mode among Video / Photo / Playback.
*SHOT key	In photo / video mode, take photo / record video; In playback mode, enlarge photo.
*Direction key	UP/DOWN/RIGHT/LEFT,
*OK key	Confirm the function

Attention: Keys with "*" only work in test mode.

3.1 Install SD card

Open the latches and front housing , insert the SD card, push it until hearing a "Click" sound.

3.2 Install 4/8 pcs AA Battery

Use 4 pcs or 8 pcs AA battery to power on the device.

A. Open the latches and remove battery cover .

B. Install 8 pcs AA batteries according to the polarity sign on the battery compartment. If only use 4 pcs batteries, please install them in the top or in the bottom of batteries compartments.

C. Close the battery cover.

3.3 Setting the camera - SETUP Gear

Push the SWITCH button to SETUP gear. On this gear, users can modify the settings.



3.3.1 Menu Setting

Press MENU button to enter menu mode, press UP / DOWN button to choose and press OK button to enter submenu.

Under submenu, press UP / DOWN button to choose and press ok button to confirm .

Press MENU button to return to previous menu.



Menu	Default setting	Function description
1.Mode	Photo	Photo / Video / Photo & Video
2.Photo resolution	13MP	48/30/24/20/16/13/8/5/3 MP
3.Photo series	1 photo	1 photo/2 photos/3 photos
4.Video resolution	1920x1080P	4K @ 10 fps 2.7K @ 20 fps 1080p/720p/VGA @ 30 fps
5.TL video resolution	13MP	48/30/24/20/16/13/8/5/3 MP
6.Video length	10 seconds	3 seconds~10 minutes
7.Audio recording	On	On/Off
8.Shot lag	5 seconds	5 seconds~60minutes
9.Side motion sensors	On	On/Off
10.Sensitivity	Middle	Low/Middle/High
11.Target recording time	Off	On: Start:00:00-23:59 Off Stop:00:00-23:59
12.Time lapse	Off	Normal/TL video/Off
13.Language	English	English/Deutsch/Dansk/Suomi/Svenska/ Español/Français/Italiano/Nederlands/ Português/简体中文/繁體中文/日本語
14.Endless capture	Off	On/Off
15.Time & date	2019/01/01 12:00	Set time & date/Time format/ Date format
16.Photo stamp	Time	Time/Date/Off
17.Password protection	Off	On: users can set a 4-digit password / Off
18.Beep sound	On	On/Off
19.Format memory card		Yes:All data will be deleted / No
20.Serial NO	Off	On:User can set a 4-digit Serial No. / Off
21.Reset settings		Yes:All settings will be deleted. / No
22.Version		Users can look over the firmware version.

3.4 PIR Mode - ON Gear

Push the SWITCH button to ON gear after finishing setting on SETUP gear. The device will switch to PIR mode 10s later. The device will work according to the saved settings.

4 Playback Mode

Photo files and video files recorded by the camera can be played back on the camera. Users can lock, unlock, delete and slide show on the device.

4.1 Playback video/photo

On SETUP gear, press MODE button to enter playback mode, press UP/DOWN button to look through photos and videos. To watch videos, press OK button to play and stop.

4.2 Delete

In playback mode, press MENU to enter sub-menu:

A. Delete current file: Delete this video/photo.

B. Delete all files: Delete all videos/photos.

Press UP/DOWN button to choose A or B and press OK to confirm.

4.3 Slide show

In playback mode, press MENU to enter sub-menu:

C. Activate slide show: photos will display one by one, 3 s/photo.

Press UP/DOWN button to choose C and press OK to confirm.

4.4 Write protect

In playback mode, press MENU to enter sub-menu:

D. Write protect: to protect the files from to be deleted.

Press UP/DOWN button to choose write protect and press OK to enter sub-menu, press UP/DOWN button to choose Write-protect current file / Write-protect all files / Unlock current files / Unlock all file, and press OK button to confirm.

Image sensor	Sony 13M Sensor
Lens FOV	90°
IR light / Range	40 pcs IR LED / 20 meter
Storage	SD/SDHC card, Max.128GB(Class10 or faster)
Photo	Format: JPEG Resolution: 48/30/24/20/16/13/8/5/3 MP
Video	Format: AVI Resolution: 4K @ 10 fps 2.7K @ 20 fps 1080p/720p/VGA @ 30 fps
Trigger time	0.5 sec
Video length	3 seconds~10 minutes
Screen	2.0 inch TFT screen
PIR detection distance	20 meter
PIR detection angle	120°
Serial No.	Yes
Time lapse	Yes
Power voltage	6V
Battery	4 pcs or 8 pcs AA battery
External power	DC 6V
Standby time	4~6 months(8 pcs AA battery)
Interface	USB / SD card / DC in
Working temperature	-10° C ~ 60° C
Storage temperature	-30° C ~ 70° C
Working humidity	5%-90%
Waterproof level	IP66
Demension	138x97x83mm

5.1 Can't switch on camera.

- Please check if the batteries polarity is correct
- Reload the batteries and reboot the camera without SD card.
- If the above step can't work, please format pr replace your SD card and try again.

5.2 Picture color abnormal

Turn off the camera and reload the batteries, and try to reboot the camera.

5.3 Camera can't take picture.

Please check if the SD card is in NON-WRITABLE mode.

5.4 PIR not work

- Must install SD card.
- Please check if the space of SD card is full.
- Please check if the camera in time lapse or delay mode.

BRAUN PHOTO
TECHNIK GmbH
Merkurstr. 8
72184 Eutingen
Germany

post@braun-phototechnik.de
www.braun-phototechnik.de