

Do you consent to the use of cookies on your device as described in our [cookie notice](#)? You can change your [cookie settings](#) at any time but parts of this site will not function correctly without them.

[I Accept Cookies](#)

[I Refuse Cookies](#)

[AnalogDialogue](#)

[EngineerZone](#)

[Wiki](#)

[Linear.com](#)



[Careers](#)

[myAnalog](#)



EVAL-FW

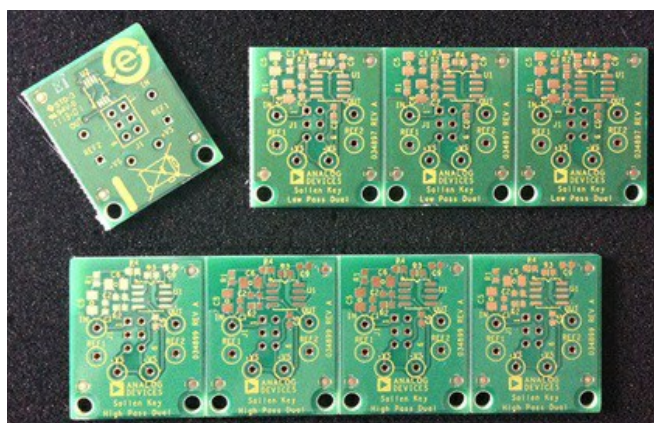
Evaluation System for Analog Filter Wizard

[Overview](#)

[Getting Started](#)

[Documentation](#)

[Buy](#)



Product Details

This page provides information for the Filter Wizard evaluation board system, for use with designs created in Analog Filter Wizard - www.analog.com/filterwizard.

For other active filter-related evaluation boards, please visit [Evaluation Board for Active Filters](#).

Getting Started



The Filter Wizard evaluation board system consists of a motherboard and several daughterboards. These boards are shipped **unpopulated** – use **BOM and assembly information generated in Analog Filter...** [Show More..](#)

Documentation



[3 See All](#)

[3 Evaluation Documentation](#)

Daughter Boards: Dual Op Amps

These daughter boards are designed for dual op amp packages,

and come as a snap-apart board consisting of four daughter boards. The daughter boards accommodate both SOIC and MSOP packages. Design files (including schematic, assembly drawing, and CAD files)

EVAL-FW-LPSK2 [ZIP](#)

Sallen Key low-pass filter stage for dual op amps

EVAL-FW-BPDF2 [ZIP](#)

Multiple Feedback (Deliyannis Friend) band-pass filter stage for dual op amps

EVAL-FW-HPSK2 [ZIP](#)

Sallen Key high-pass filter stage for dual op amps

EVAL-FW-LPMFB2 [ZIP](#)

Multiple Feedback low-pass filter for dual op amps

EVAL-FW-HPMFB2 [ZIP](#)

Multiple Feedback high-pass filter for dual op amps

Daughter Boards: Single Op Amps

These daughter boards are designed for single op amp packages, and come as a snap-apart board consisting of four daughter boards. The daughter boards accommodate both SOIC and SOT-23 packages. Design files (including schematic, assembly drawing, and CAD files)

EVAL-FW-LPSK1 [ZIP](#)

Sallen Key low-pass filter stage for single op amps

EVAL-FW-HPSK1 [ZIP](#)

Sallen Key high-pass filter stage for single op amps

EVAL-FW-BPDF1 [ZIP](#)

Multiple Feedback (Deliyannis Friend) band-pass filter

EVAL-FW-LPMFB1 [ZIP](#)

Multiple Feedback low-pass filter for single op amps

EVAL-FW-HPMFB1 [ZIP](#)

Multiple Feedback high-pass filter for single op amps

Filter Wizard Mother Board

Each motherboard has slots for four daughterboards, which correspond to a filter stage in a filter design. If the design requires more than four stages, multiple motherboards can be connected together.

EVAL-FW-MOTHER [ZIP](#)

Design files (including schematic, assembly drawing, and CAD files)

Buy 

Evaluation Boards

Pricing displayed is based on 1-piece.

Model	Description	Price	RoHS
EVAL-FW-BPDF1 Production	Multiple Feedback (Deliyannis Friend) band-pass filter stage for single op amps		Yes
EVAL-FW-BPDF2 Production	Multiple Feedback (Deliyannis Friend) band-pass filter stage for dual op amps		Yes
EVAL-FW-HPSK1 Production	Sallen Key high-pass filter stage for single op amps		Yes

Model	Description	Price	RoHS
Production			
EVAL-FW-HPMFB2 Production	Multiple Feedback high-pass filter stage for dual op amps		Yes
EVAL-FW-HPSK1 Production	Sallen Key high-pass filter stage for single op amps		Yes
EVAL-FW-HPSK2 Production	Sallen Key high-pass filter stage for dual op amps		Yes
EVAL-FW-LPMFB1 Production	Multiple Feedback low-pass filter stage for single op amps		Yes
EVAL-FW-LPMFB2 Production	Multiple Feedback low-pass filter stage for dual op amps		Yes
EVAL-FW-LPSK1 Production	Sallen Key low-pass filter stage for single op amps		Yes
EVAL-FW-LPSK2 Production	Sallen Key low-pass filter stage for dual op amps		Yes
EVAL-FW-MOTHER Production	Motherboard for Filter Wizard evaluation system		Yes

Back

Add to cart

NETHERLANDS ▾

Check Inventory

Pricing displayed is based on 1-piece. The

Problem Solvers

4,700+

Patents Worldwide

125,000

Customers

50+

Years

Ahead of What's Possible

ADI enables our customers to interpret the world around us by intelligently bridging the physical and digital with unmatched technologies that sense, measure and connect. We collaborate with our customers to accelerate the pace of innovation and create breakthrough solutions that are ahead of what's possible.

See the Innovations

Analog Devices. Dedicated to solving the toughest engineering challenges.

SOCIAL



QUICK LINKS

About ADI
Analog Dialogue
Contact us
News Room

Alliances
Careers
Investor Relations
Quality & Reliability

LANGUAGES

English
简体中文
日本語
Русский

NEWSLETTERS

Interested in the latest news and articles about ADI products, design tools, training and events? Choose from one of our 12 newsletters that match your product area of interest, delivered monthly or quarterly to your inbox.

