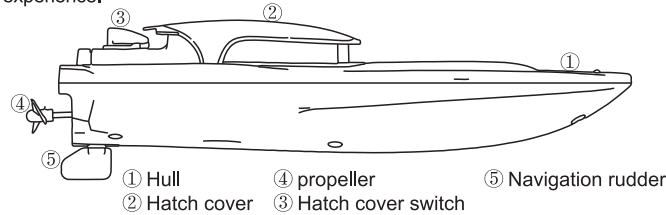


INSTRUCTIONS FOR BEGINNERS

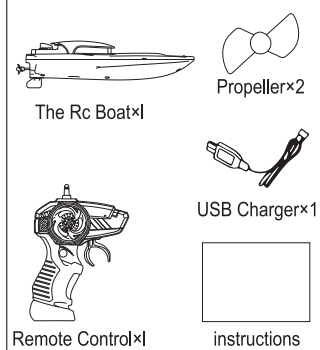
1. When in the water, the RC boat will automatically conduct and connect to the remote controller.
2. Always keep the RCboat within the range of 25 meters to avoid control loss.
3. The RC boat can run for up to 20 minutes.recovery fun ction. Please pay attention to keep the boat from capsize or strike that may result in capsize.
4. Please keep the boat from objects such as waterweeds to avoid being trapped
5. You can manually adjust the direction.

THE RC BOAT

The S series RC boat applies 2.4G remote control system to enable multiple players compete without interference. The remote controller allows for multiple functions,such as racing, sailing in different directions (forward,backward,left and right) and fine-tuning,bringing you a thrilled experience.



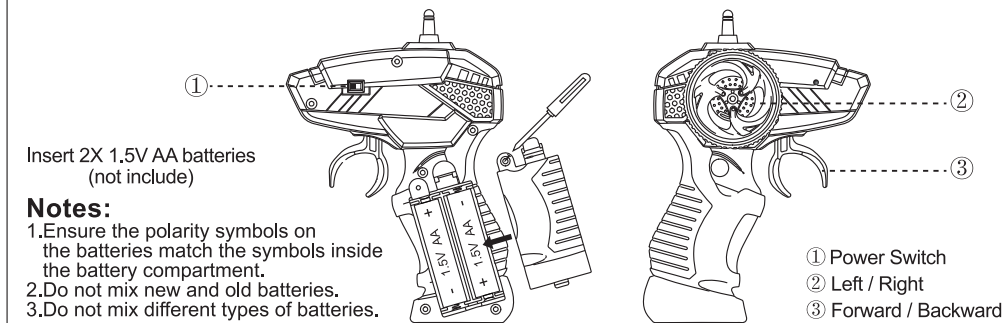
ACCESSORIES



Notes:

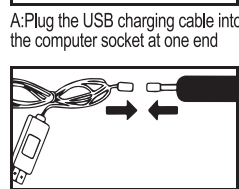
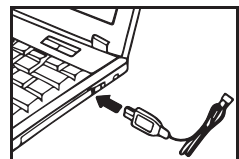
please check the number of accessories carefully (as shown above). Please provide proof of purchase and contact the store for replacement if any missing parts.

KNOW YOUR REMOTE CONTROL



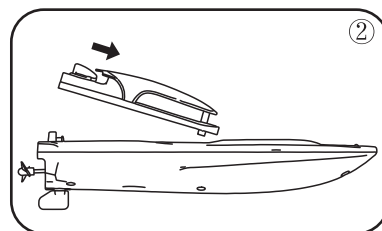
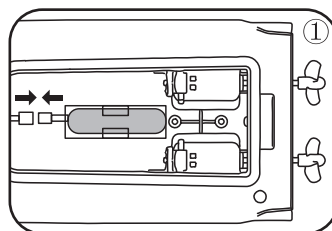
BATTERY CHARGING AND ASSEMBLY FOR RC BOAT

1.Battery Charging for RC Boat



2.Battery Assembly for RC Boat

- ① Insert the battery into the RC boat, and click in the battery base with the battery connectors connected correctly.
- ② Insert the hatch at a full 45 degrees and push it firward to refit it.



Notes:

Caution:Charging time is about 90 minutes. Using time is about 15 minutes. LED lights up red: battery is charging. LED is off: battery is full/fully charged.

Battery Instructions

- There is a certain risk when using battery. It may cause fire, body injury or property loss. Users must be aware of the risks and take full responsibility of using battery improperly.
- If battery leakage occurs, please avoid contacting your eyes or skin with electrolyte. Once it happens, please wash your eyes with clean water and seek medical care immediately.
- Please remove the plug immediately if you sense any peculiar smell, noise or smog.

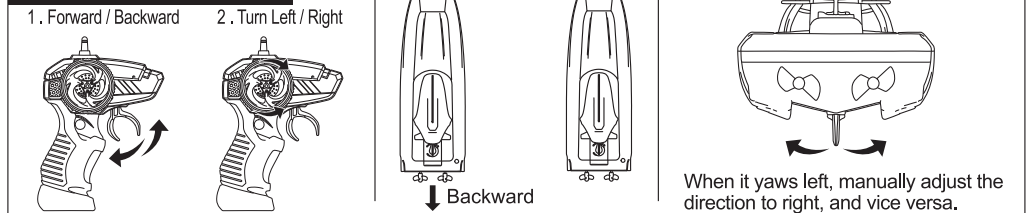
Battery Charging

- Please use the charger from original factory to ensure your safe usage.
- Do not charge dilatatant or outworn battery.
- Do not over charge battery.Please unplug the charger once fully charged.
- Do not charge the battery next to inflammables,such as carpet,timber floor or wood furniture or on the surface of electro-conductive obiects. Please always keep an eye on the battery when charging.
- Do not charge battery which not cool down yet.
- The charging temperature should be between 0°C to 40°C.

Battery Recycling

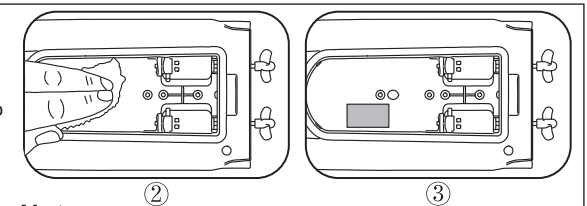
- Do not dispose the battery as daily rubbish. Please familiarize yourself with the local garbage disposal method and dispose it according to the special requirement.

OPERATION WITH REMOTE CONTROL



MAINTENANCE

- ① Remove the battery when the RC boat stops running.
- ② Avoid the RC boat exposure to strong sunlight to protect the paint. Use a piece of soft and dry cloth to clean the RC boat after every use.
- ③ If the RC boat is left unused for a long period, remove the battery to avoid leakage, which results in damage to the remote controller.



Notes:

Use a piece of soft and dry cloth to clean the RC boat after every use. And put a desiccant pack in the boat to avoid moisture and humidity.

IMPORTANT

- This product is not categorized as toys or playthings. It is applicable for users aged 8 and the above. For users under the age of 8 , a parent or legal guardian shall company and supervise the child's use of this product at all times.
- Please do not charge batteries, which are not cool down yet.
- Ensure no people in the water before shipping the RC boat otherwise it might cause potential accidents. Be aware if there are any plants, objects or obstacles in the water body, since they might be sucked or caught up in the rotating propellers and cause damages to the RC boat.
- Please operate the RC boat within a range 25 meters in distance in case of control loss.
- This product includes small and tiny components , which might cause suffocation if swallowed. Please do not swallow any included components.
- Please keep distance from the propellers particularly when they are rotating at to avoid injury.
- Please do not touch the motor in operation or soon after it stops to avoid severe burns.
- According to electromagnetic environment requirements for aviation radio (station), this product is strictly prohibited by the airport runway as the center of a circle with radius of 5,000 meters.
- Please do not use this product where and when the radio communication is regulated by the authority.
- Please inspect the USB cable and other components regularly. If any damages are found, please stop using and restore or replace with a new one.