

FRONT

3 inches

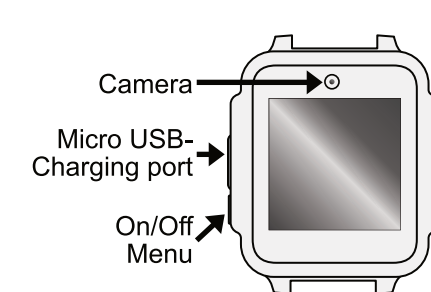


PAW Patrol Kids-Watch
User manual

3 inches

Turning the Kids-Watch on/off:

To turn the watch on and off, please press the button on the left of the watch for 3 seconds.



Watch faces:

There are two analogue and two digital watch faces. To change the displayed watch style, please press and hold the centre of the watch for a while.

Main menu:

Swipe in any direction to open the menu. To exit the menu, briefly press the on/off button or swipe to the right.

3 inches

Status indicator:

The alarm, sound status and battery status can be read in the status display.

	ALARM IS ENABLED
	DEVICES SOUND IS ON
	BATTERY STATUS

Charge the battery: Please only under adult supervision!

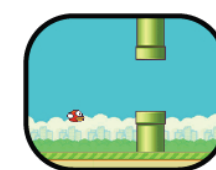
- Carefully open the protective cap on the left above the on/off switch.
- Carefully plug in the supplied charging cable with the narrow side.
- Connect the large end to the power socket using a conventional USB socket (on a computer or a commercially available USB charging adapter). Charging time approx. 1.5 hours
- After the watch is fully charged, please remove the charging cable from the power source first, then from the watch.

3 inches

Games:



Box-o-round
Jump with the big object over the smaller one.



Flying Bird
Fly through the columns with the bird.



Pinball Hit Bricks
Steer the platform and destroy the stones with the ball.

3 inches

Camera:



- Press the camera icon in the menu to enter camera mode.
- Press the camera's capture icon to take a picture
- Press the save icon to save the picture, or the dustbin to delete the picture.

Camera filters:

There are fun filters that can be changed with the arrow keys in camera mode.



- Press the video icon in the menu to enter video mode.
- Press the record icon on the video camera to create a video.
- Press the record icon again to pause the video.

3 inches

- To save, press the save symbol at the bottom right.
- Playback can be done directly via the gallery icon or by pressing on the gallery in the menu.



This is a simple pedometer for counting movements. This function is for fun only and is not a precise measuring instrument. The watch should be worn on the wrist for maximum accuracy.

- Press the start symbol to start the pedometer. Press the stop symbol to stop the recording .
- Press the reset symbol to reset the counter to zero.
- The distance covered and the calories burned are displayed here.

3 inches

p1

3 inches

Record mode:



In record mode, an audio recording can be made. To do this, press the button and the recording starts. Press again to stop the recording.

To play, select the audio recording with the arrow keys and press play.

Pressing the dustbin deletes the recording.



Alarm: First set the desired time.

Select the alarm tone by pressing the bell icon:

There are different alarm tones to choose from.

p2

3 inches



Timer: Set the desired duration and confirm.

Stop or snooze:

Stop stops the alarm, Snooze delays the alarm for another 5 minutes.



Press Start to begin timing. Press again to pause.

Press to reset.

Calculator:

Type in your calculating task (addition, subtraction, multiplication, division).

Press the equals sign to display the result.

Press to delete the last entry.

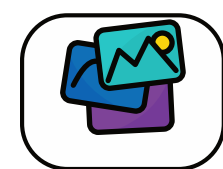
p3

3 inches

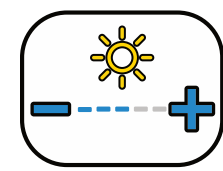
Settings:



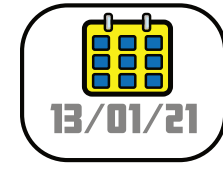
Press the option icon to access the settings. To make settings, press the icon or select the - and + symbol.



Change background



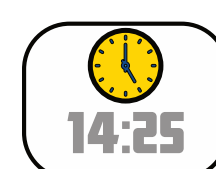
Adjust brightness



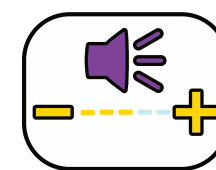
Set date

p4

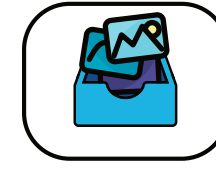
3 inches



Set time



Change volume



Select memory

- WATCH (internal memory) or Select MicroSD card*.
 - Shows the current free memory space.
- *MicroSD card must be inserted.

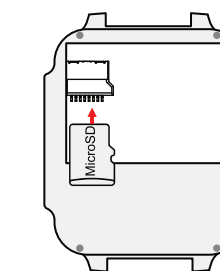
p5

3 inches

Insert MicroSD card: Please only under adult supervision!

Carefully remove the battery cover.

Carefully remove the battery and insert the MicroSD card with the contacts facing downwards. (Supports MicroSD cards up to 32GB)



Select reset in the system. Confirm the reset with to reset the Kids-Watch to the factory settings. (Attention: Files saved on the watch will be deleted).

@Spin Master Ltd.™PAW PATROL and all related titles, logos, characters; and SPIN MASTER logo are trademarks of Spin Master Ltd. Used under license. Nickelodeon and all related titles and logos are trademarks of Viacom International



WARNING AND SAFETY INSTRUCTIONS:

•Keep packaging parts away from children. They are not part of the toy. •Danger of burns from battery acid! The battery can be life-threatening if swallowed. In case of contact with battery acid, rinse the affected area with clean water and consult a doctor immediately! •Conversion or modification of the product impairs product safety. •All modifications and repairs to the unit or accessories must be carried out exclusively by the manufacturer or by persons expressly authorised by the manufacturer. •The independent opening of the product and the performance of any repairs is not permitted! Handle the unit with care. It can be damaged by shocks, impacts or even by falling from a low height. Keep the product away from moisture, wetness and extreme heat. Never immerse the product in water or other liquids. •Technical specifications are subject to change without notice. •Never heat the battery above 60°C, drop it or throw it into a fire. There is a risk of explosion/fire! •Do not short-circuit the battery terminals. •Do not subject the battery to mechanical stress. Do not drop the battery, subject it to shocks, bend, twist or disassemble it. If the battery overheats, stop charging immediately. A battery that overheats or deforms during charging is defective and should no longer be used. •Never fully discharge the battery as this will result in a shortening of its useful life. •Please clean the belt regularly with warm water and soapy water. This will help prevent discoloration over time. •If the battery needs to be stored, it is recommended to store it with 30% of its charge capacity. Protect from direct sunlight. Ideal storage temperature: 10-20°C. •Keep the product away from small children.

Warranty 2 years from date of purchase

CE Notes on environmental protection: Packaging is recyclable raw material. Do not dispose of old appliances in household waste. **Cleaning:** Protect the appliance from dirt (clean with a clean cloth). Do not use rough, coarse materials or solvents or other aggressive cleaning agents. Wipe cleaned device thoroughly. **Distributor:** Technaxx Deutschland GmbH & Co.KG, Kruppstr. 105, 60388 Frankfurt a.M., Germany

Warning! Choking hazard. Small parts.

3 inches

p7

p8

p9

p10

p11

p12

BACK