

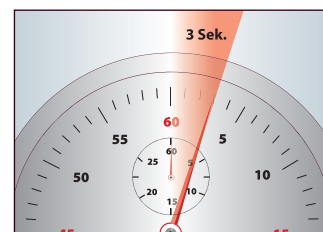
Without decoration

## PC-HWS 1145 Hot water dispenser

- > Stainless steel housing
- > High-speed water dispenser – hot water at the touch of a button
- > ECO-Save – 50 % time savings compared to conventional kettles (energy-saving)
- > 100 °C in approx. 3 seconds
- > 6 temperature levels (45 °C / 55 °C / 65 °C / 75 °C / 85 °C / 100 °C)
- > Capacity up to 4 litres
- > Water level indicator (blue illuminated)
- > Adjustable amount of water 100 ml / 200 ml / 300 ml / 400 ml / 500 ml / continuous
- > LED display (blue illuminated)
- > Water dispenser/storage area (blue illuminated)
- > Sensor touch operation
- > 4 indicator lights (blue illuminated)
- > Lock function/Child lock
- > Incl. insert for low cups
- > Secure stand due to suction feet
- > 220–240 V, 50/60 Hz, 2200–2600 W



LED display / Sensor touch operation



Hot water in approx. 3 seconds



Product:	Art. no:	20" / 40" / HQ-Container:
PC-HWS 1145	501 145	900 / 1842 / 2116
Colour:	Art. EAN:	Device (W x H x D):
Stainless steel	4 006 160 114 522	190 x 340 x 280 mm
PU:	Export carton EAN:	Packaging (W x H x D):
2	4 006 160 215 342	313 x 388 x 226 mm

**100 °C  
in approx.  
3 seconds**

**6  
temperature  
levels**