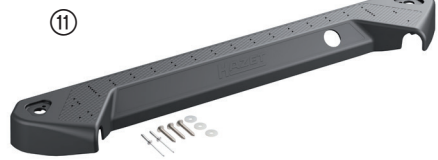
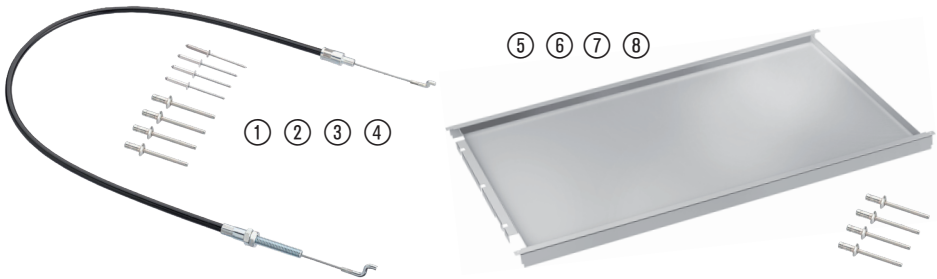


# Montageanleitung Deckelgruppe 179 NX Serie

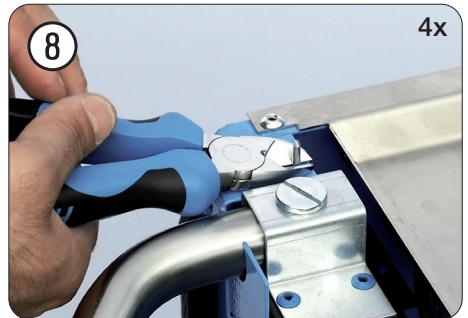
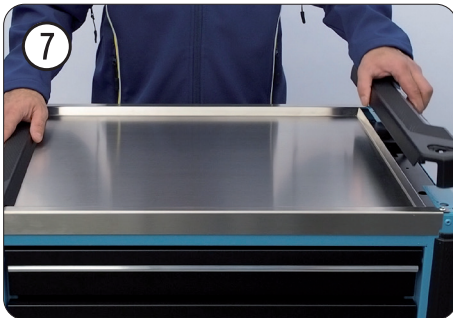
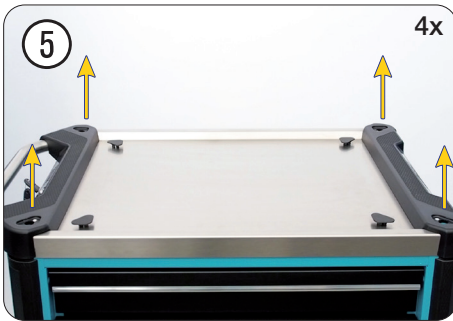
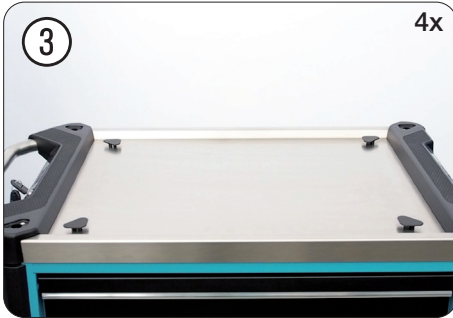
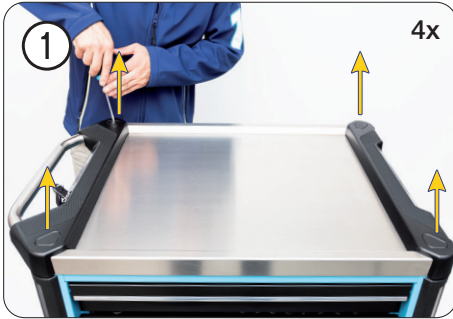


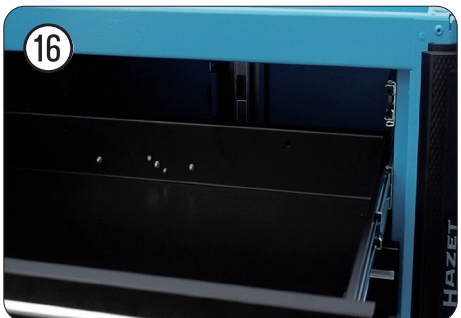
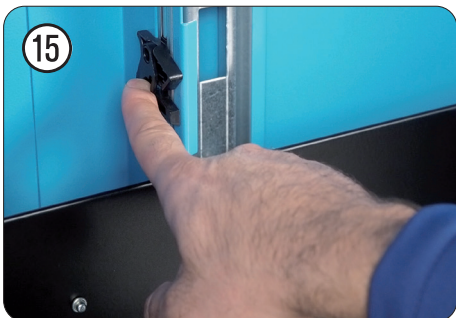
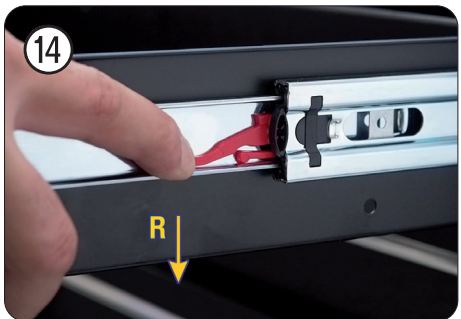
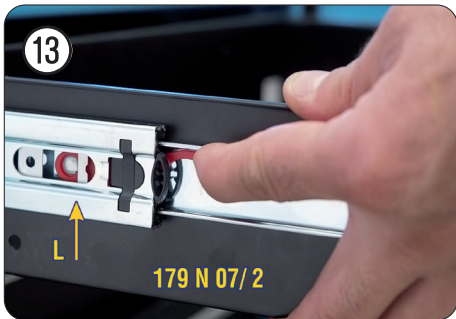
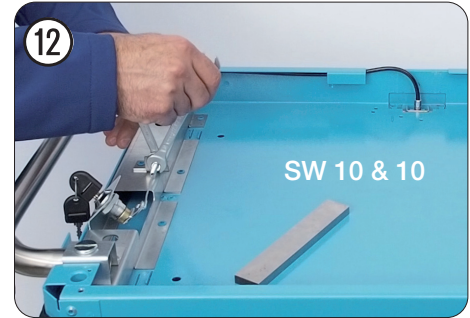
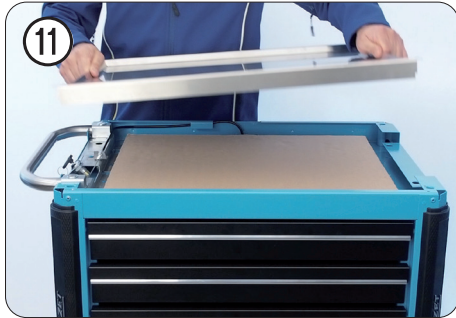
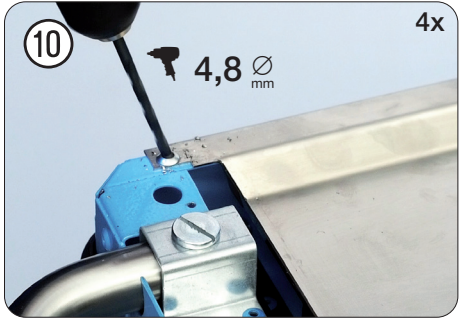
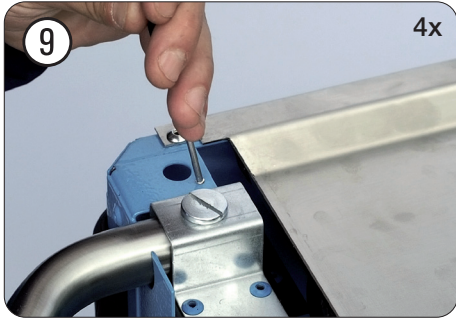
	HAZET No.		
①	179 N-01A	Seilzug	1
②	179 NXL-01A	Seilzug	1
③	179 NXXL-01A	Seilzug	1
④	179 NXXLD-01	Seilzug 8D	1
⑤	179 NX-05	Edelstahlplatte	1
⑥	179 NXL-05	Edelstahlplatte	1
⑦	179 NXXL-05	Edelstahlplatte	1
⑧	179 NXXLD-05	Edelstahlplatte D	1
⑨	179 NX-05G	Kunststoff-Abd-lks	1
⑩	179 NX-05R	Kunststoff-Abd-re	1
⑪	179 NXXLD-05G	Kunststoff-Abd-lks	1
⑫	179 NXXLD-05R	Kunststoff-Abd-re	1

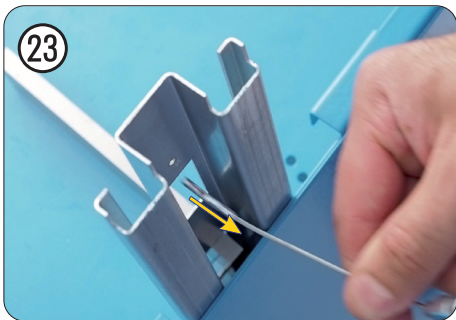
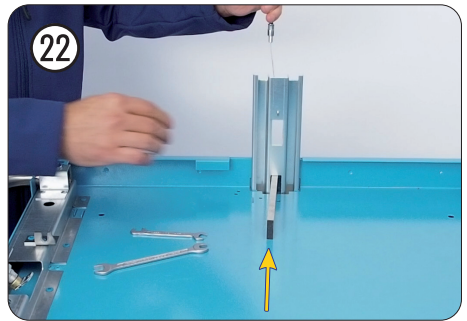
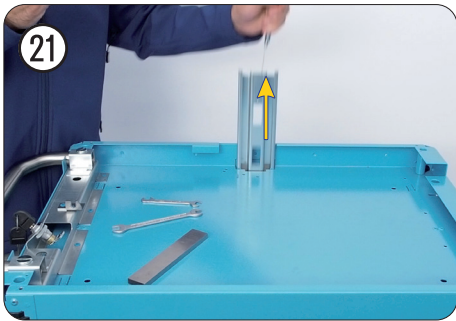
**179 NX**  
**179 NXL**  
**179 NXXL**  
**179 NXXL-8D**



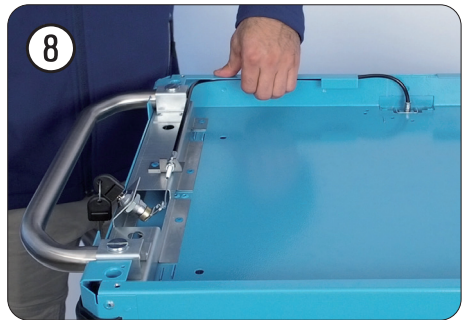
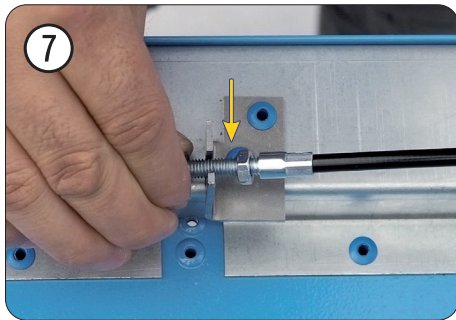
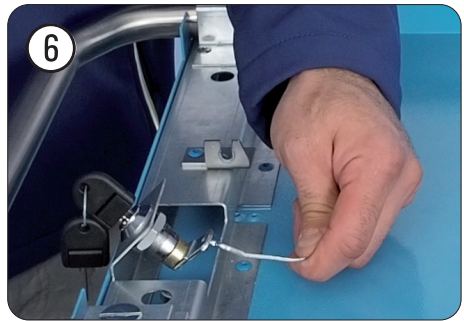
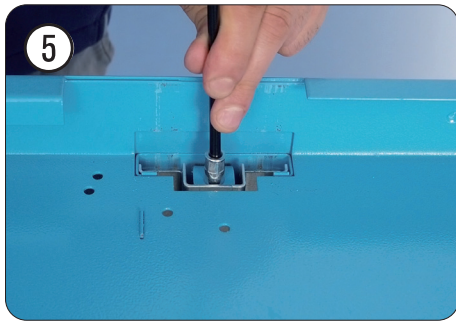
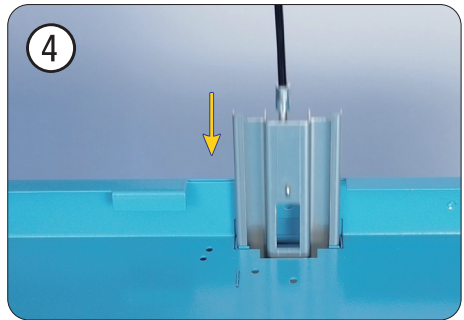
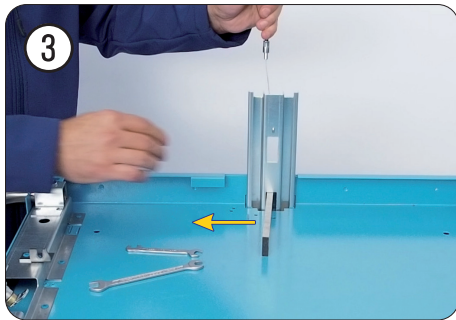
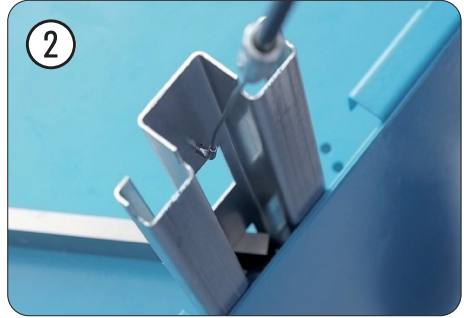
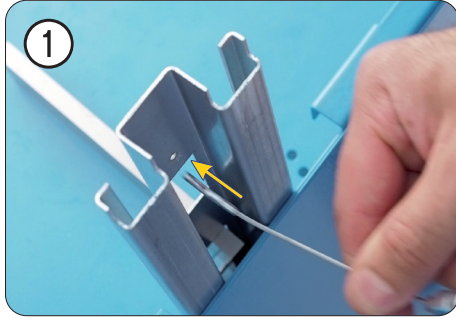
## Seilzug-Ausbau







## Seilzug-Einbau



Die korrekte Einstellung finden Sie in unserem Video. Einfach den QR-Code scannen

