



SUNPOWER TECHNOLOGY CORP.
 16F.-1, No.150, Jian 1st Rd., Zhonghe Dist., New Taipei City 235, Taiwan (R.O.C.).
 TEL: 886-2-8226-3100 FAX: 886-2-8226-3111
 http://www.sunpower.com.tw
 E-mail: sunpower@sunpower.com.tw

SPS-225P-xx Series

225W, Single Output

Active P.F.C Function



198 x 99 x 38 mm
 7.8 x 3.9 x 1.5 inch



Features:

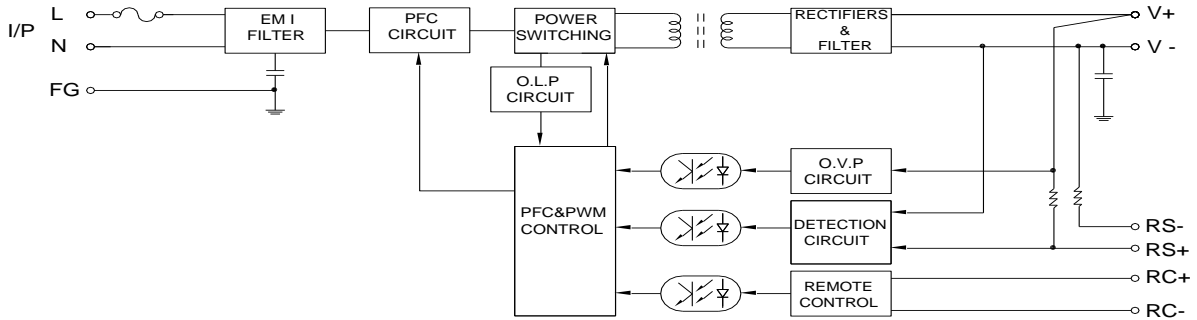
* Altitude during operation up to 16404ft (5000m)	* Remote control ON/OFF Type Optional:
* Universal AC input with active PFC circuit, P.F.>0.95	① Standard Type SPS-225P-xx
* Power ON with LED indicator	② Reverse Type SPS-225P-xxR (has MOQ required)
* Built in EMI filter, low ripple noise	* UL, cUL, CB, CE approved
* Over voltage , over load & short circuit protection	* 3 years warranty
* Output voltage \pm 10% adjustment	
* Output voltage remote sense	

Specification:

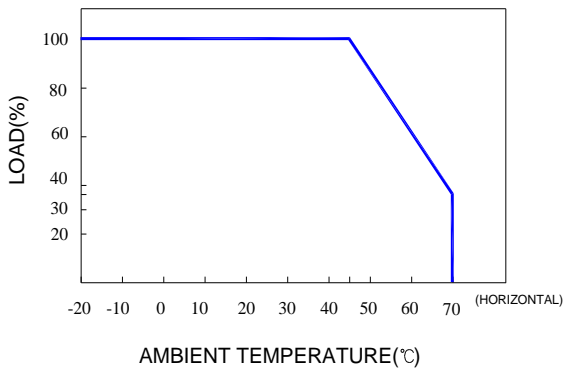
INPUT	Voltage	85V ~ 264VAC universal full range or 120V ~ 375VDC.						
	Frequency	47 ---- 63 Hz						
	Current	<3A @100V AC input, full load condition						
	Inrush Current(TYP.)	35A@115V , 70A@230V AC input. Cold start at 25°C ambient						
	Leakage Current	<1.5mA@264V AC input						
	Power Factor	PF > 0.95						
OUTPUT	MODEL No.	SPS-225P-05	SPS-225P-12	SPS-225P-15	SPS-225P-24	SPS-225P-27	SPS-225P-30	SPS-225P-48
	Voltage	5V	12V	15V	24V	27V	30V	48V
	Min Load	0A	0A	0A	0A	0A	0A	0A
	Max Load	40A	18.8A	15A	9.4A	8.4A	7.5A	4.7A
	Output Tolerance ②	\pm 2%	\pm 1%	\pm 1%	\pm 1%	\pm 1%	\pm 1%	\pm 1%
	Ripple Noise MAX. ③	150mV	150mV	150mV	200mV	200mV	250mV	250mV
	Efficiency (TYP.)	85%	89%	89%	89%	89%	89%	90%
	Output MAX.	200W	225.6W	225W	225.6W	226.8W	225W	225.6W
PROTECTION	Over Voltage	5.8V~7.0V	13.8V~16.8V	17.3V~21.0V	27.6V~33.6V	31.1V~37.8V	34.5V~42.0V	55.2V~67.2V
	Over Load & Short Circuit	Shutdown and latch off, recover after re-start up. When power supply over 105%~ 150% max load or short circuit acted, power supply will be constant current limiting and recover automatically after the fault is removed.						
ELEC. CHAR.	Rise time	<20mS						
	Hold up time	>16mS@230V, full load condition						
	Setup time (TYP)	<3.0S@115VAC , <1.5S@230VAC						
	Remote sensing	(RS+, RS-).						
ENVIRONMENT	Remote Control	RC+/RC-: Standard Type 0~0.8V= Power On; 4~10V= Power Off ; Reverse Type 0~0.8V= Power Off; 4~10V= Power On						
	Temperature ④	Operating: -20 ~ +70°C ; De-rating: 45 ~ 70°C : 2.5%/°C ; Storage: -40 ~ +85°C						
	Humidity	Operating: 20% ~ 90% RH (non condensing) ; Storage: 10% ~ 95% RH (non condensing)						
SAFETY	Withstand voltage	I/P-O/P:3KVAC, I/P-FG:1.8KVAC, O/P-FG:0.5KVAC, 1minute						
	Isolation resistance	I/P-O/P, I/P-FG, O/P-FG > 100MΩ/500VDC at 25°C / 70% RH						
	Safety standard	UL 62368-1, 2 nd Edition, 2014-12-01, CAN/CSA C22.2 No.62368-1-14, 2 nd Edition, 2014-12, IEC 62368-1:2014						
EMC	EMI	Test Items	Standard				Test Level	
		Conducted	EN 55032				Class B	
		Radiated	EN 55032				Class B	
		Harmonic	EN 61000-3-2				Class D	
	EMS	Voltage Flicker	EN 61000-3-3				---	
		Test Items	Standard				Test Level	
		ESD	EN 61000-4-2				Level 3, 8KV air ; Level 2, 4KV contact	
		Radiated	EN 61000-4-3				Level 2, 3V/m	
		EFT / Burst	EN 61000-4-4				Level 2, 1KV	
		Surge	EN 61000-4-5				Level 3, 2KV/Line-Earth , 1KV/Line-Line	
OTHERS	Cooling	Natural cooling						
	M.T.B.F.	148.7 K hours						
	Dimension	198 x 99 x 38 mm (L*W*H)						
NOTE	Packing	N.W.: 0.647Kg / 1pc; 18 pcs / 1.38 CUFT / 1 CTN						
	①	All measurements which not mentioned are based on 230VAC input, output Max at ambient 25°C / 70%RH						
	②	Output tolerance included set up voltage, line regulation and load regulation.						
	③	Ripple & noise are measured at 100~254VAC input with 10~50°C condition and 20MHz of bandwidth by using a 10" ~ 15" twisted pair-wire terminated with a 0.1uF & a 47uF parallel capacitor.						
	④	The operating temperature shall follow the de-rating curve in spec The output load may be requested for decreasing as de-rating curve in spec when low input voltage is under 100VAC.						
⑤	The power supply is considered a component of end-equipment. The end-equipment must be re-confirmed whether comply with EMC directives.							

SPS-225P-xx Series

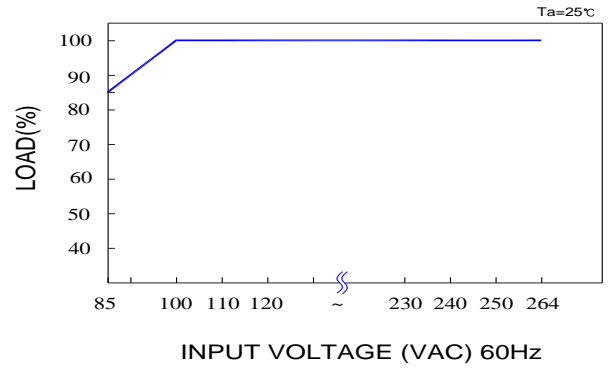
Block Diagram : PS57



De-rating Curve : E2

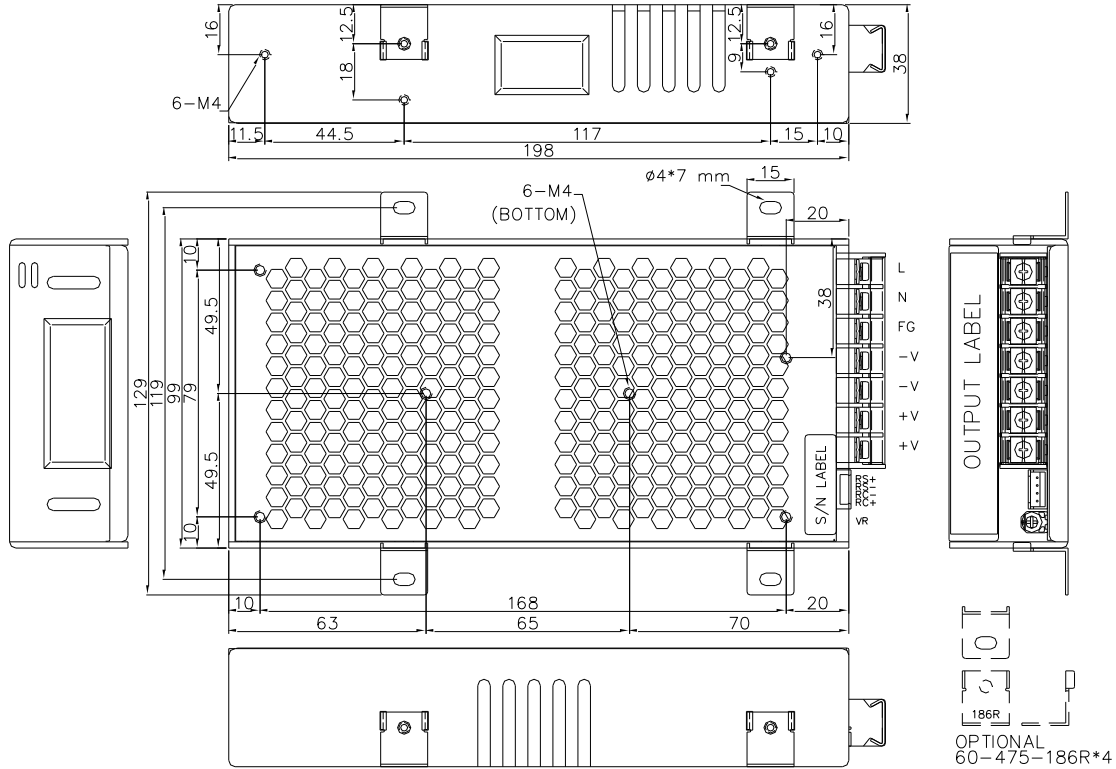


Output De-rating Vs Input Voltage : M2



Dimension:

(Unit: mm)



NOTES:

TERMINAL BLOCK: 7P, PITCH 9.5mm WITH PC COVER.

MODEL No.	1	2	3	4	5	6	7
SPS-225P-xx	L	N	FG	-V	-V	+V	+V

SPS-225P-xx Series

Remote sense & Remote control ON/OFF:

- ❶ Remote control ON/OFF becomes available by applying voltage in CON2
- ❷ Standard Type and Reverse Type shows the specification of remote control ON/OFF function
- ❸ Fig 1 slows the example to connect remote control ON/OFF function

Standard Type (SPS-225P-xx) : Specification of remote control ON/OFF

Connection Method		Fig 1	Between RC+ and RC-
SW Logic	Power ON	SW Open	0~0.8V
	Power OFF	SW Close	4~10V

Reverse Type (SPS-225P-xxR) : Specification of remote control ON/OFF

Connection Method		Fig 1	Between RC+ and RC-
SW Logic	Power OFF	SW Open	0~0.8V
	Power ON	SW Close	4~10V

Fig 1 Examples of connecting remote control ON/OFF

